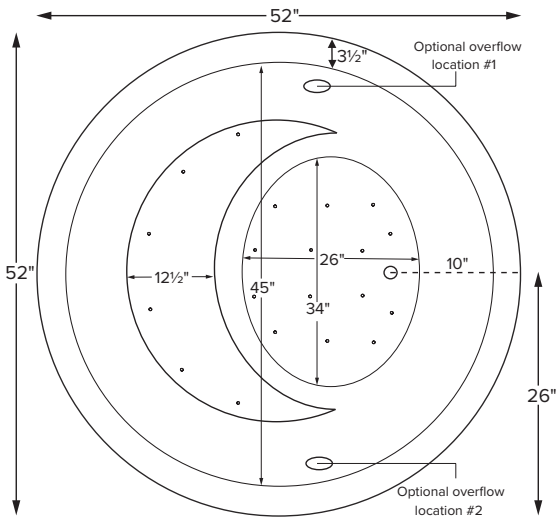


Jasmine 3

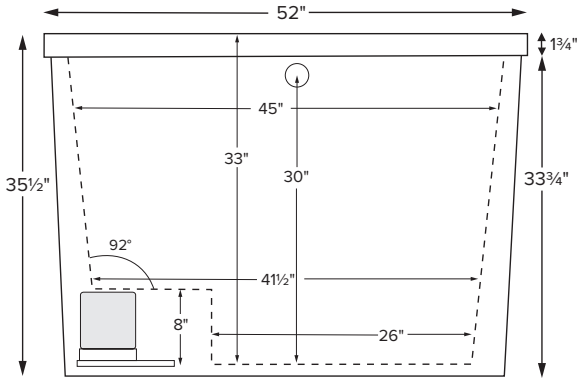
| |
|---|
| MODEL 134 |
| 52" x 52" x 35.5" |
| FREESTANDING 160 gal to overflow |
| Acrylic CXL® |
| 123 lbs / 56 kg soaker |
| Filling this tub to the maximum may require an above average size or dedicated water heater. |



Features integral seat



Shown with Air Massage Package.



IMPORTANT

Consider and select location of overflow when ordering and planning installation. See drawing and "Important Ordering & Installation Information".



Access panel
7 1/8" x 9 1/8"

Air bath includes secondary access panel.



Access panel
10" x 20"

ELECTRICAL COMPONENTS & SPECIFICATIONS

| Hydrotherapy Package | Components Included | 110V GFCI |
|---|------------------------------|-----------|
| Air Massage | heated blower | 1-15 amp |
| Air Massage Elite | heated blower, chromatherapy | 1-15 amp |
| Electrical requirements may change with the addition of optional therapy components. See specific option details or installation information. CSA Certified C/US; B45.5/IAPMO ANSI Z124.1 and ANSI 112.19.7 | | |

See the Installation & Operation Manual for more details.
MTI's Customer Service: Monday-Friday 8am-6pm EST
800-783-8827 or service@mtibaths.com

- Before discarding tub packaging, check for accessories that may be packaged inside.
- All product measurements are ±1/2".
- Specifications and configurations are subject to change without notice.
- Measurements herein supersede all others published prior to publication date below.

IMPORTANT ORDERING & INSTALLATION INFORMATION:

- Before ordering or installing, please consider future access to equipment.
- Includes cable-driven drain kit with factory-installed overflow.
- Must indicate overflow location #1 or #2 on order; see line drawing above.
- This freestanding tub comes equipped with a visible access panel behind the overflow. Please plan for this when positioning the tub for final installation.
- Radiance placed on floor locations will affect placement of air jets.
- Faucet valves cannot be installed on this tub model.
- Textured bottom is compliant with ASTM C 1028-07 friction coefficient.

Jasmine 3

MODEL 134

52" x 52" x 35.5"

| Hydrotherapy Packages | Package Contents | Part # | MSRP |
|-----------------------|--|--------|----------|
| Soaker | Soaking bath - no jets; textured bottom, chrome cable-driven drain with factory-installed overflow, and pre-leveled foam base. | S134 | \$8,340 |
| Air Massage | 20 air jets, heated air blower, chrome cable-driven drain with factory-installed overflow, and pre-leveled foam base, textured bottom. | AST134 | \$11,895 |
| Air Massage Elite | 30 air jets, heated air blower, Chromatherapy LED lighting, chrome cable-driven drain with factory-installed overflow, and pre-leveled foam base, textured bottom. | AE134 | \$13,745 |

RECOMMENDED SENSORY THERAPIES

Chromatherapy

(LE) **\$880** underwater lighting
2 LED lights included

Audiotherapy

(STEREOBT) **\$1,535** 2 transducers
with bluetooth and amplifier
(BTREMOTE) **\$660** bluetooth remote

(STEREOH202) **\$1,740** 4 transducers
amplifier not included

Thermaltherapy

(RAD100) **\$1,760** Radiance®
2 heated zones included

Options *Must be ordered at time of purchase*

Standard Colors White (CWH)

Quick Ship reduces lead time (QSPRI) **\$475**
Please call for availability

Virtual Spout high-flow integrated tub filler (FPMJ) **\$500**

Accessories

Pillows from **\$200**

Teak Bath Mat (TKMAT3018) **\$880**
Custom sizes also available. Contact MTI for details and pricing.

Floor-Mounted High-Flow Tub Filler
Contemporary Brushed Nickel (FILLBN) **\$1,885**

Drains & Overflow Kits

Cable Driven

Drain Finishes – PVC Drain Kit
Chrome (WOCD) included

Finish Upcharge

White/Biscuit (WOCDWU) **\$40**
Brushed Nickel (WOCDBNU) **\$130**
Polished Nickel (WOCDPNU) **\$225**
Oil-Rubbed Bronze† (WOCDORU) **\$225**
Polished Brass (WOCDBRU) **\$225**
Special Finishes* (WOCDSFU) **\$765**

MTI does not offer a brass body cable drain kit.



- Overflow is installed at the factory.
- Drain kit is concealed between tub walls.
- Access panel behind overflow on this tub model facilitates drain installation.

† MTI has selected an oil-rubbed bronze finish that is compatible with Delta and many other manufacturers. To ensure best match, order as a Special Finish and submit a sample.
* Allow 2-4 weeks lead time for Special Finishes. Send sample for best match.