

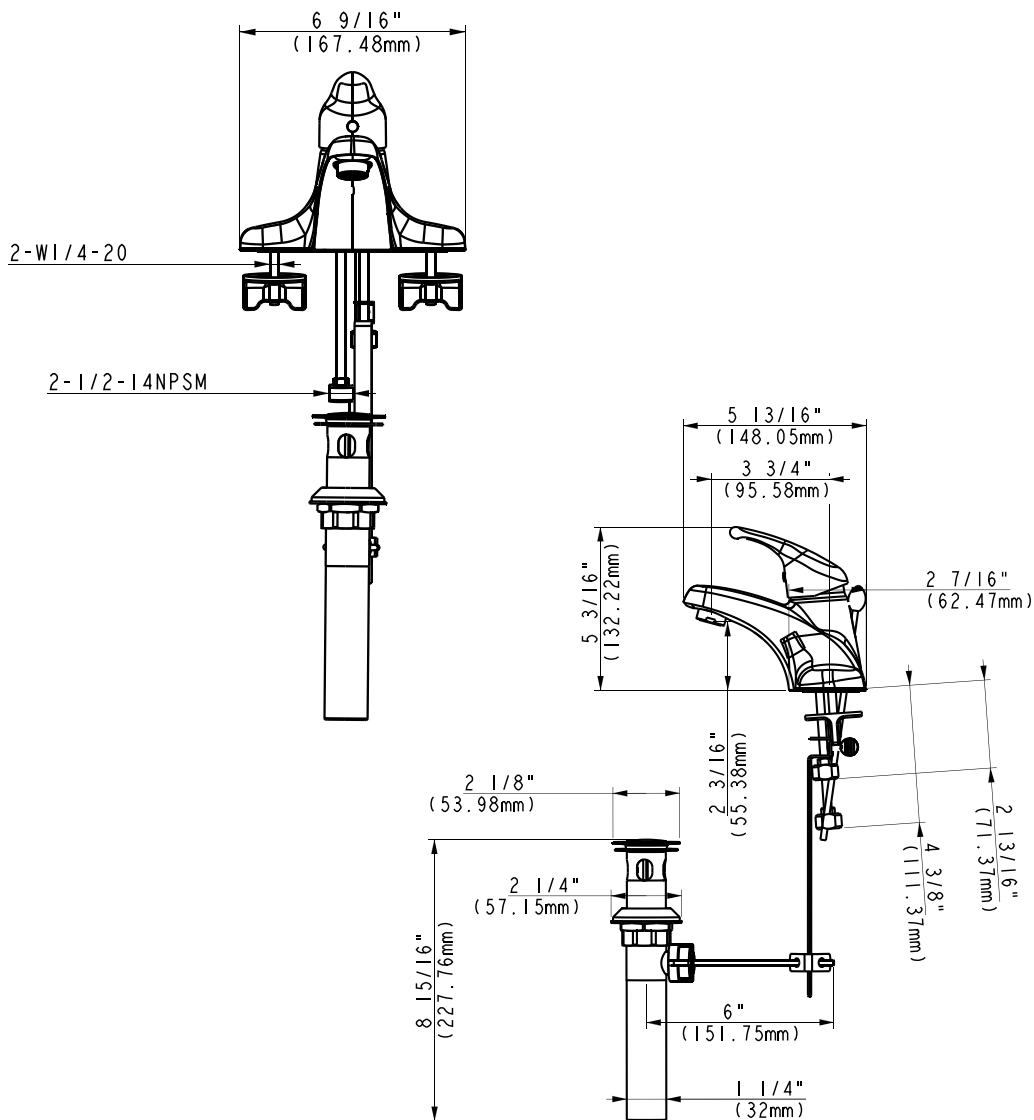
Specification of Item NO.#FAU-B1HCR4101-406

FEATURES

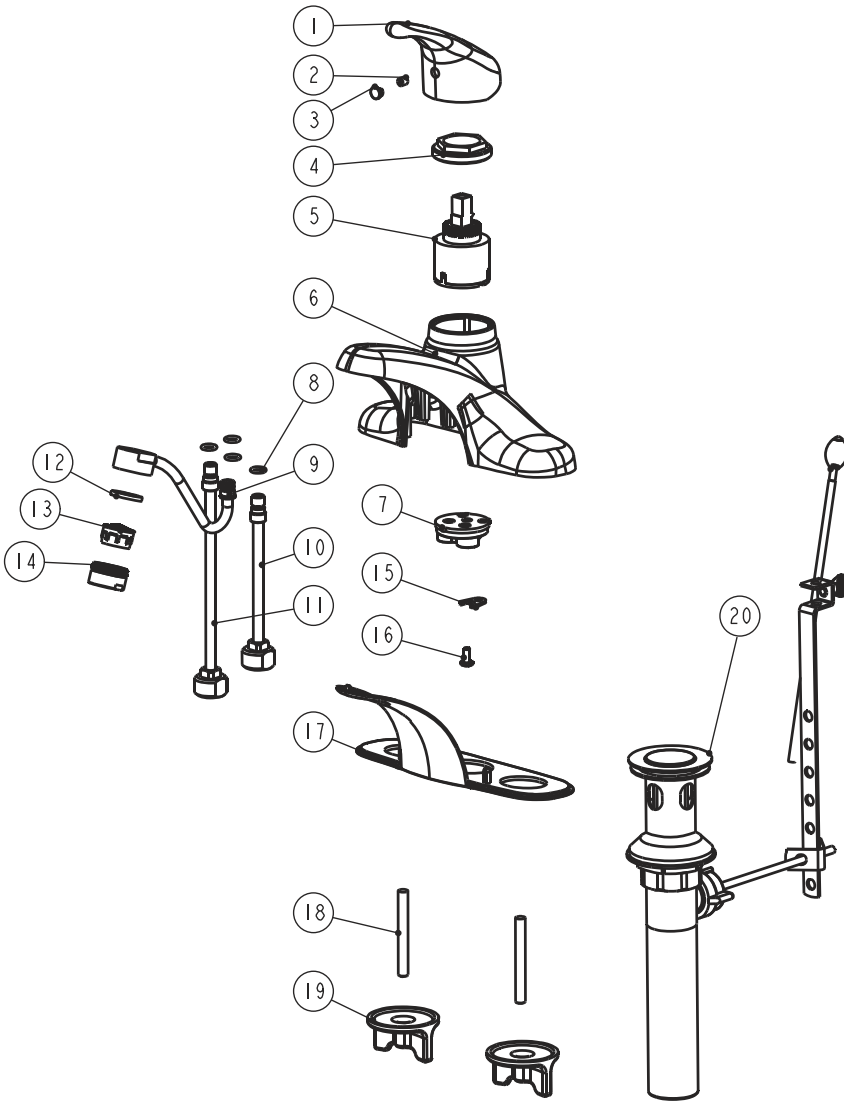
Ceramic Cartridge • Metal Lever Handle

Max Flow Rate: 1.2GPM(4.5LPM) at 60 PSI (ASME.A112.18.1M)

Finish: Chrome Finish



APPROVAL: Meets or exceeds the following: *ANSI/ASME A112.18.1m, *ANSI/NSF 61-Sec.9, *IAPMO/CUPC



Bill of Materials Item NO.#FAU-B1HCR4101-406

NO.	COMPONENT	MATERIAL
1	Metal Handle	Zinc
2	Screw	SS
3	Index Button	ABS
4	Cartridge Nut	AL
5	Ceramic Cartridge	n/a
6	Deckplate	Zinc
7	Inner Body	Brass
8	O-ring	EPDM
9	Copper Tube	Copper
10	Copper Tube	Copper
11	Copper Tube	Copper
12	Gasket	EPDM
13	Aerator Core	n/a
14	Aerator Cover	Brass
15	Gasket	SS
16	Screw	Iron
17	Plate	ABS
18	Stud	Iron
19	Nut	ABS
20	50/50 Pop-up Drain	n/a