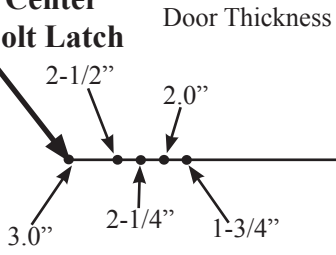


TEMPLATE

MT Forge 2016

4. Mark Hole Center For Deadbolt Latch

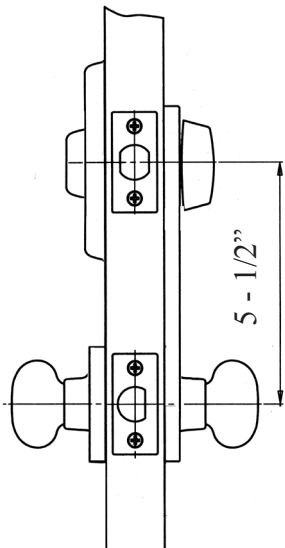
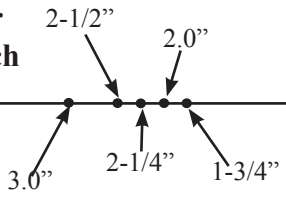


9. DRILL 1" DIAMETER HOLE AT MARKED HOLE CENTER

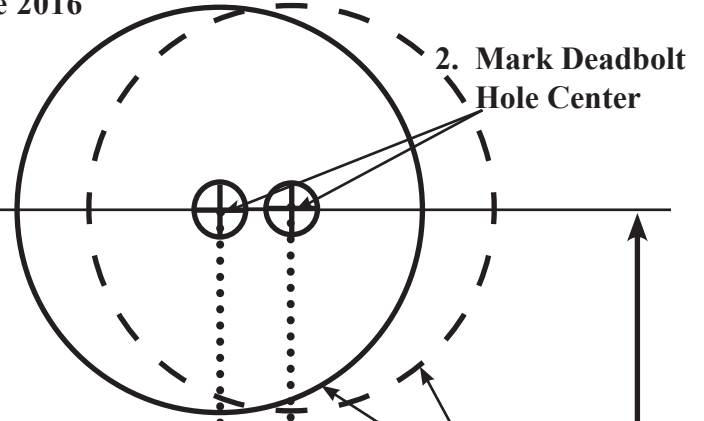
1. FOLD ALONG DOTTED LINE AND FIT ON DOOR EDGE

10. DRILL 1" DIAMETER HOLE AT MARKED HOLE CENTER

5. Mark Hole Center for Plain Latch



Mark Height 36" to 38" from floor to Knob/Lever hole center



6. Drill 2-1/8" diameter hole for Deadbolt

2-3/8" Backset

2-3/4" Backset

5 - 1/2"

3. Mark knob/lever Hole Center

7. Drill 2-1/8" diameter hole for knob/lever

Montana Forge Deadbolt/Passage Combo Installation Instructions

Read the instructions carefully before you begin installation. They provide important information on how to prepare your door and install your lockset properly.

BEFORE PROCEEDING:

- Check your door thickness. Be sure your door thickness is between 1-3/4" to 2-7/8".
- Confirm the backset of your door to be either 2-3/8" or 2-3/4".
- Match your deadbolt and knob/lever latches backset with your backset on your door.

TOOLS NOT INCLUDED BUT NEEDED FOR NEW INSTALLATION:

- Phillips head screwdriver.
- Power Drill and 3/8" drill bit, 1" drill bit, 2-1/8" hole saw or drill bit.
- Hammer, and 1" Chisel..

<h3>1. MARK DOOR</h3> <ol style="list-style-type: none"> 1. Start approximately 36" to 38" from floor, select backset, & apply template onto high edge of bevelled door. Tape in place if necessary. 2. Mark hole center on door face for deadbolt. 3. Mark hole center on door face for knob/lever. 4. Mark hole center on door edge for deadbolt latch. 5. Mark hole center on door edge for knob/lever latch. 	<h3>2. BORE FOUR (4) HOLES</h3> <ol style="list-style-type: none"> 1. Drill a 2-1/8" hole through the door face. <i>Note: it is recommended to first drill a pilot hole with 1/8" drill bit through the door, and then drill the larger holes from both sides of the door for steps 1, 2, and 3 to avoid splitting and jagged edges.</i> 2. Drill a second 2-1/8" hole through the door face. 3. Drill two (2) 1" holes in the door edge.
---	--

<h3>3. MORTISE DOOR EDGE FOR LATCHES</h3> <ol style="list-style-type: none"> 1. Insert Deadbolt latch into hole in door edge. Keep the latch face parallel & mark an outline of latch face with pencil. Remove latch. Repeat for the handleset latch. 2. Chisel 1/8" mortise in door edge. 3. Insert latches into holes & tighten with wood screws. <p><i>Notes: Knob/lever latch bolt bevel must face to the closing direction of the door. Deadbolt latch crank hole must be in the down position.</i></p>	<h3>4. INSTALL STRIKES ON JAMB</h3> <ol style="list-style-type: none"> 1. Close door until latch bolt touches the door jamb. Mark the horizontal center line along the latch face onto the jamb. 2. Measure one half of the door thickness from the door stop and mark vertical center line onto the jamb. 3. Extend the horizontal center line and vertical center line, then mark the center points for the strikes onto the jamb. 4. Place strikes in position and mark outline of strikes. 5. Drill a 1" hole, 1-1/8" deep in the door jamb at the upper center for the deadbolt latch. 6. Drill a 1" hole, 9/16" deep in the door jamb at the lower center for the knob/lever latch. 7. Chisel outline for the strikes 1/16" deep or until strikes are flush with door jamb. 8. Install the strikes and tighten wood screws.
---	---

<h3>5. ADJUSTABLE LATCH FOR DEADBOLT</h3> <ol style="list-style-type: none"> 1. Most models are equipped with a latch that can be adjusted between either 2-3/8" or 2-3/4" backset. 2. To adjust from 2-3/4 to 2-3/8" backset, hold the latch faceplate still and simply rotate the latch body 180 degrees counter clockwise until it stops. 3. To adjust from 2-3/8" to 2-3/4" rotate latch body 180 degrees clockwise until it stops. 	
--	--

<h3>6. MOUNT "COMBO" ON DOOR</h3>	<ol style="list-style-type: none"> 1. Insert the spindle through the latch. Make sure the ball catch goes all the way through the latch to lock the spindle in place. It can be removed by pressing in the ball catch. 2. Insert the cylinder into the exterior deadbolt rosette, then tailpiece through the deadbolt latch cross hairs. Make sure the tailpiece is positioned horizontally 1/2 way through its rotation. 3. Position the interior mounting plate over the knob/lever spindle and deadbolt cylinder tailpiece through respective openings. Note arrow showing correct orientation of mounting plate and push plate against the door. Ensure plate fits in the holes flush, then thread in assembly screws for deadbolt cylinder and knob/lever and tighten snugly. Ensure smooth operation of deadbolt cylinder and thumb latch. If binding occurs loosen the mounting screws, re-align mounting plate then retighten mounting screws 4. Place interior escutcheon over mounting plate, secure with small threaded collar in upper hole, and large threaded collar in lower hole. Hand tighten threaded collars with white plastic tool. 5. Place plastic washer over upper chassis spindle and then position deadbolt turnpiece onto spindle, secure with set screw and hand tighten with enclosed small Allen Key. 6. Attach knob/lever trim, secure with set screw and hand tighten with enclosed large Allen Key. 7. Place exterior knob/lever rosette over exterior knob/lever chassis and secure with large threaded collar. Repeat step 6 for exterior knob/lever trim.
-----------------------------------	---