



EQ700 Bremen



EQ708 Belgrade

## BREMEN AND BELGRADE

Bremen reflects inspiration from abstracted interlocking shapes based on a topographic map of Mother Earth. Belgrade is inspired by small multifaceted fragments of gemstones creating a random mosaic framework juxtaposed by a larger scaled shard pattern. Both are unique reflections of nature's elements and raw beauty.



## Bremen

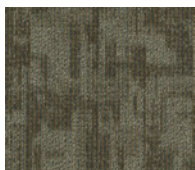
Product Type	Carpet Tile
Construction	Tufted
Surface Appearance	Textured Patterned Loop
Gauge	1/12" (47.00 rows per 10 cm)
Tufted Weight	15 oz/yd <sup>2</sup> (509 g/m <sup>2</sup> )
Pile Thickness	.099" (2.51 mm)
Stitches Per Inch	12.2 (48.03 per 10 cm)
Density	5,382
Weight Density	79,654
Dye Method	100% Solution Dyed
Fiber Type	Colorstrand® SD Nylon
Stain Release Technology	Mohawk Protection Plus Stain
Soil Release Technology	Mohawk Protection Plus Soil
Primary Backing	Non-Woven Synthetic
Secondary Backing	UltraSet®
Recycled Content	Contains a minimum 39% pre-consumer recycled content by total product weight
NSF 140	Gold
Indoor Air Quality	Green Label Plus Certified # 1098
Size	24" x 24" (.6096 m x .6096 m)
Installation Method	Quarter Turn / Monolithic / Brick Ashlar / Vertical Ashlar / Multi Directional
Flammability	ASTM E 648 Class 1 (Glue Down)
Smoke Density	ASTM E 662 Less than 450
Static Propensity	AATCC-134 Under 3.5 KV
Appearance Retention Rating (TARR)	Severe Traffic
Warranties	Lifetime Limited Wear Warranty Lifetime Limited Static Protection Warranty Lifetime Limited Edge Ravel, Zippering, Delamination, and Dimensional Stability Warranty Lifetime Limited Colorfastness to Light Warranty 10 Year Limited Stain Resistance Warranty 10 Year Limited Colorfastness to Atmospheric Contaminants Warranty

## Belgrade

Product Type	Carpet Tile
Construction	Tufted
Surface Appearance	Textured Patterned Loop
Gauge	1/12" (47.00 rows per 10 cm)
Tufted Weight	15 oz/yd <sup>2</sup> (509 g/m <sup>2</sup> )
Pile Thickness	.080" (2.03 mm)
Stitches Per Inch	12.2 (48.03 per 10 cm)
Density	6,660
Weight Density	98,658
Dye Method	100% Solution Dyed
Fiber Type	Colorstrand® SD Nylon
Stain Release Technology	Mohawk Protection Plus Stain
Soil Release Technology	Mohawk Protection Plus Soil
Primary Backing	Non-Woven Synthetic
Secondary Backing	UltraSet®
Recycled Content	Contains a minimum 39% pre-consumer recycled content by total product weight
NSF 140	Gold
Indoor Air Quality	Green Label Plus Certified # 1098
Size	24" x 24" (.6096 m x .6096 m)
Installation Method	Quarter Turn
Flammability	ASTM E 648 Class 1 (Glue Down)
Smoke Density	ASTM E 662 Less than 450
Static Propensity	AATCC-134 Under 3.5 KV
Appearance Retention Rating (TARR)	Severe Traffic
Warranties	Lifetime Limited Wear Warranty Lifetime Limited Static Protection Warranty Lifetime Limited Edge Ravel, Zippering, Delamination, and Dimensional Stability Warranty Lifetime Limited Colorfastness to Light Warranty 10 Year Limited Stain Resistance Warranty 10 Year Limited Colorfastness to Atmospheric Contaminants Warranty

Cover: Bremen Carpet Tile 878 Fine Line and Belgrade Carpet Tile 878 Fine Line

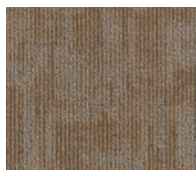
### Bremen



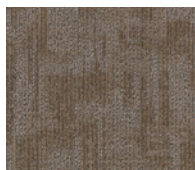
521  
Delightful Discovery



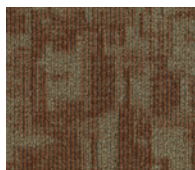
589  
Most Remarkable



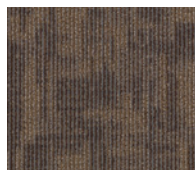
841  
Modernist Vision



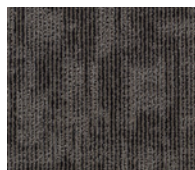
858  
Awesome Amazing



869  
Vivid Palette

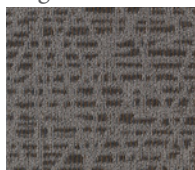


878  
Fine Line

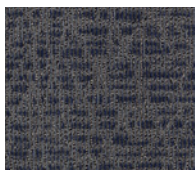


979  
Brilliantly Excellent

### Belgrade



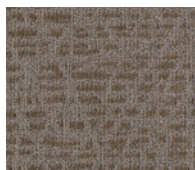
521  
Delightful Discovery



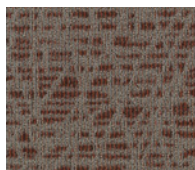
589  
Most Remarkable



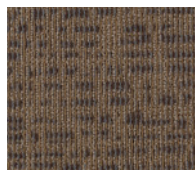
841  
Modernist Vision



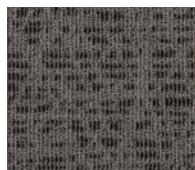
858  
Awesome Amazing



869  
Vivid Palette



878  
Fine Line



979  
Brilliantly Excellent



Up to 2,000 sq. yds. available within 10 business days or less

