



DESIGN

Product Type:	Tile
Construction:	Tufted
Minimum Sq. Yd.:	No Minimum
Surface Texture:	Textured Patterned Loop
Gauge:	1/8 (31.50 rows per 10 cm)
Density:	6,207
Weight Density:	124,140
Stitches Per Inch:	9.8 (38.58 per 10 cm)
Finished Pile Thickness:	.116" (2.95 mm)
Dye Method:	Solution Dyed
Backing Material:	EcoFlex ICT
Fiber Type:	Colorstrand® SD Nylon
Face Weight:	20 oz. per sq. yd. (678.2 g/m ²)
Pattern Repeat:	Not Applicable
Size:	24" x 24" (.6096 m x .6096 m)
Installation Method:	Monolithic, VerticalAshlar, BrickAshlar, QuarterTurn
Soil Release Technology:	Sentry Plus
Foot Traffic Recommendation TARR:	Heavy

SUSTAINABILITY

IAQ Green Label Plus:	Green Label Plus 1098
Pre-Consumer Recycled Content:	48%
NSF 140:	Gold
Declare Label:	Declared

PERFORMANCE

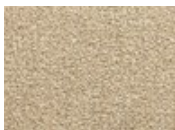
Static:	AATCC-134 Under 3.5 KV
Flammability:	ASTM E 648 Class 1 (Glue Down)
Smoke Density:	ASTM E 662 Less than 450

SERVICE

Warranties:	Lifetime Limited Carpet Tile Warranty, Lifetime Limited Colorfastness to Light, 10 Year Limited Colorfastness to Atmospheric Contaminants, 10 Year Limited Stain Warranty, Lifetime Static
-------------	--



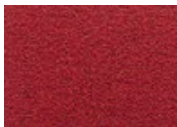
7138
Very Curry



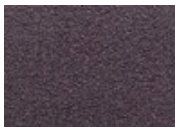
7145
Sandrift Beige



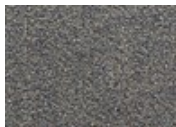
7241
Sundried Tomato



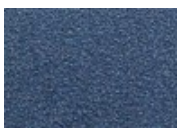
7465
Bombshell Red



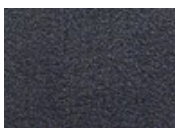
7489
Velvet Underground



7559
Slaten Sky



7575
Voltaic Blue



7599
Twilight Dawn



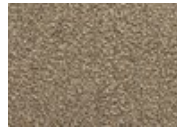
7646
Wacky Khaki



7652
Spring Leaf



7846
Bamboo Sprout



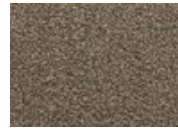
7847
Stoney Pebble



7858
Natural Hybrid



7868
Coffee Bean



7869
Grounded Earth



7898
Double Latte



7938
Moon Eclipse



7939
Hammered Tin



7959
Chameleon Mixer



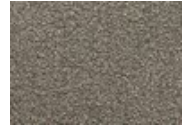
7968
Burnished Iron



7969
Chimney Sweep



7979
Metal Works



7988
Pencil Point



7989
Blackened Pearl