

MOEN®

Specifications

DESCRIPTION

- Electronic toilet with bidet cleansing and remote control

INSTALLATION REQUIREMENTS

- Standard power outlet within 57-7/8" (147cm) of product required: 120V AC on a minimum 10A circuit
- Requires minimum dynamic (flowing) water pressure of 11 psi (0.08MPa) and a maximum static (non-flowing) water pressure of 109 psi (0.75MPa)
- Requires toilet rough-in to be 12" (30.5cm) from center of drain hole to water supply line

FLOW

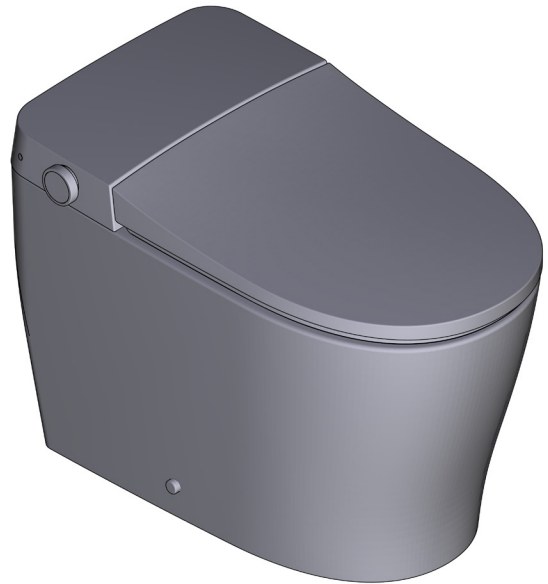
- 1.0 gpf (3.8 lpf)

STANDARDS

- Third party certified by Intertek:
- ASME A112.4.2 / CSA B45.16 Personal hygiene devices for water closets, which includes conformity to IAPMO / ANSI Z124.5 plastic toilet seats
- ASME A112.19.2/CSA B45.1 Ceramic plumbing fixtures
- CSA C22.2 no. 68 Motor-operated appliances (household and commercial)
- CSA C22.2 no. 64 Household cooking and liquid-heating appliances
- UL 1431 standard for personal hygiene and health care appliances
- ADA Compliant
- Third party certified to WaterSense®, ASME A112.18.1/CSA B125.1, and all applicable requirements referenced therein

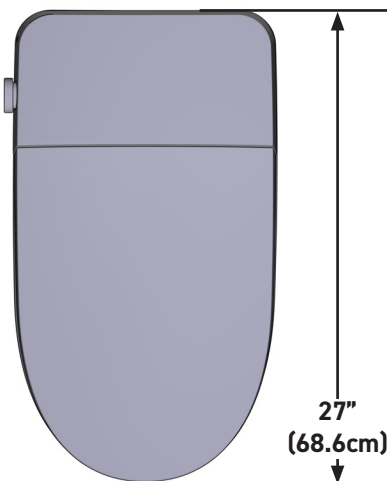
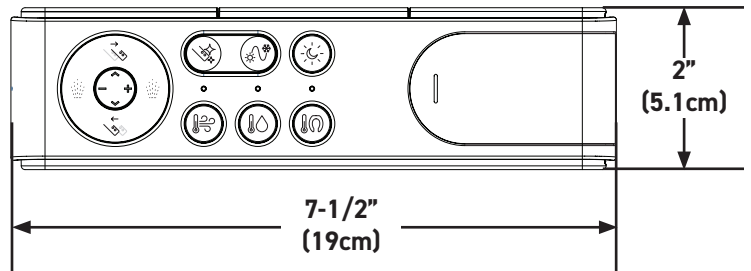
WARRANTY

- Limited 3 year warranty against leaks and finish defects to the original consumer purchaser
 - 1 year warranty if used in commercial installations
- Visit www.moen.com/support for complete details and limitations



Moen®
eToilet

MODELS: ET900, ET1300 (shown)



CRITICAL DIMENSIONS DO NOT SCALE

MOEN® eToilet Feature Comparison Chart



ET900 with Remote



ET1100 with Remote



ET1300 with Remote



ET2200 with Remote

	ET900 with Remote	ET1100 with Remote	ET1300 with Remote	ET2200 with Remote
CLEANSING				
Anterior Cleanse	•	•	•	•
Posterior Cleanse	•	•	•	•
Oscillating Cleanse	•	•	•	•
Pulsating Cleanse	•	•	•	•
Water Pressure Control	•	•	•	•
Water Temperature Control	•	•	•	•
Nozzle Position Adjustment	•	•	•	•
Instantaneous Water Heating	•	•	•	•
AIR DRYING				
Air Dryer	•	•	•	•
Flash Drying		•	•	•
Air Temperature Control	•	•	•	•
SEAT				
Antimicrobial Seat	•	•	•	•
Heated Seat with Temperature Control	•	•	•	•
Softclose Seat and Lid	•	•	•	•
Foot Touch Open Seat and Lid				•
HYGIENE				
Self-Cleaning Nozzle	•	•	•	•
Antibacterial Nozzle (Silver Nanotech)	•	•	•	•
Nozzle UV Sterilization		•	•	•
Replaceable Nozzle	•	•	•	•
Air Purifier (Deodorizer)		•	•	•
ENERGY SAVING				
Auto Energy Saver	•	•	•	•
On/Off Button	•	•	•	•
High Efficiency Flush (1.0 GPF/3.8 LPF)	•	•	•	•
SENSOR				
Seat Sensor	•	•	•	•
Night Light	•	•	•	•
Sensing Night Light	•	•	•	•
Automatic Flush	•	•	•	•
Automatic Open/Close Lid				•
CONTROL				
Remote Flush	•	•	•	•
Remote Open Seat and Lid			•	•
Knob Control	•	•	•	•
FLUSH				
Foot Touch Flush				•
Low Pressure Flush (MIN 0.08 PMA)	•	•	•	•