

## DESCRIPTION

- Brass construction
- Valve Kit includes valve and tub spout manifold
- Available with 1/2" CC/IPS, PEX, and Cold Expansion PEX connections
- Valve outlet matches manifold inlet connection type
- 1/4 turn shutoffs included for serviceability

## OPERATION

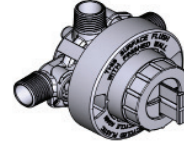
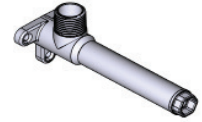
- Supplied Flush Plug allows testing up to 200 PSI with air (300 PSI water)
- **FLOW**
- Tub Faucet is designed to deliver 8 GPM/min (30.28 L/min) at 60psi
- Note: Installation that is inconsistent with Moen recommendations may degrade flow rate

## CARTRIDGE

- Cartridge is supplied in the Wallmount Tub Filler Trim Kit
- **STANDARDS**
- Third party certified to ASME A112.18.1/CSA B125.1, and all applicable requirements referenced therein
- ADA for lever handle

## WARRANTY

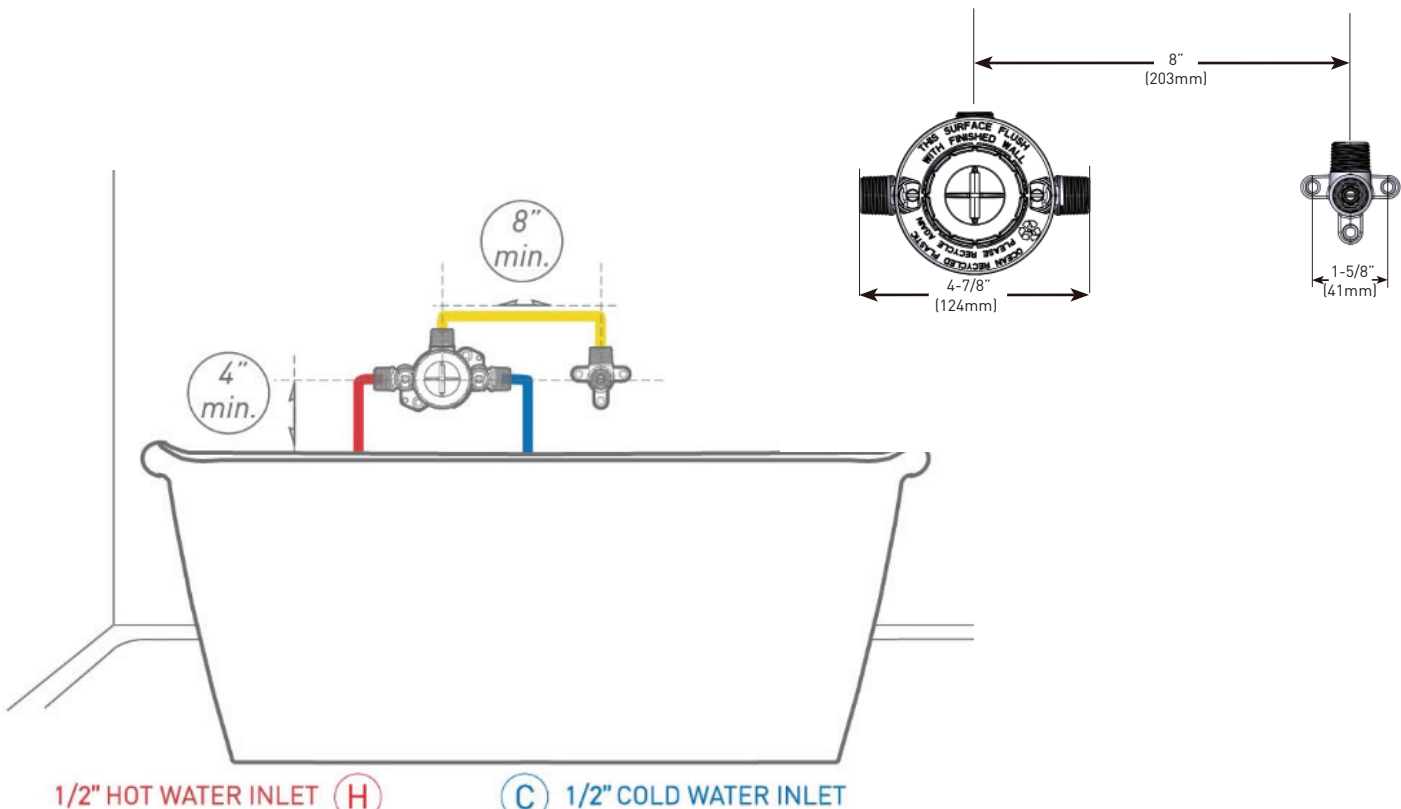
- Lifetime limited warranty against leaks, drips and finish defects to the original homeowner
- 10 year limited warranty when used in a multifamily installation
- 5 year limited warranty when used in a commercial installation
- Visit [www.moen.com/support](http://www.moen.com/support) for complete details and limitations



Rghin Wall Mount Tub Cc/Ips

**MODELS:** WMV130CIS CC/IPS  
WMV130CXS COLD Expansion PEX  
WMV130XS PEX

ADA



## CRITICAL DIMENSIONS

DO NOT SCALE