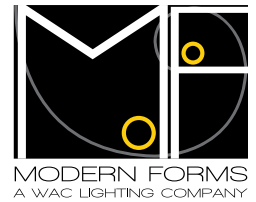
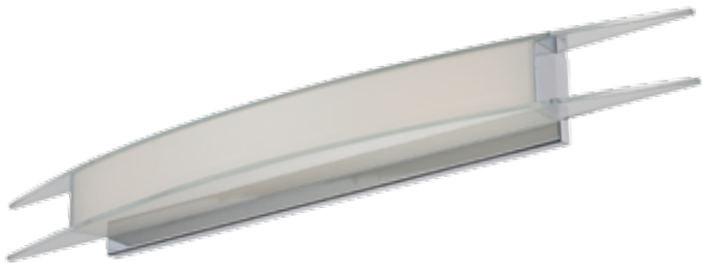


# ARC- model: WS-33

## LED Vanity/Sconce Luminaire



shown with optional metal light shield

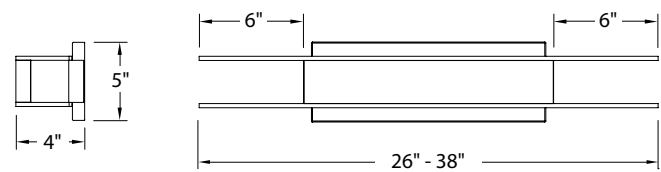


Fixture Type:

Catalog Number:

Project: \_\_\_\_\_

Location: \_\_\_\_\_



### PRODUCT DESCRIPTION

On the cutting edge of fine bath lighting, Arc embodies unique contemporary styling. Illuminating from three sides for maximum functional light output as a both vanity, or using the included chrome shield option to transition it into a chic powder room or home theater sconce.

### FEATURES

- Mount vertically or horizontally
- Optional chrome metal light shield included
- Low profile design
- Replaceable LED modules
- 50,000 hour potential life
- 5 year WAC Lighting product warranty
- 120° beam angle
- **Color Temp: 3000K**
- **CRI: 85**

### SPECIFICATIONS

**Construction:** Aluminum with clear and silk screened glass.

**Power:** Transformer located in outlet box. 120V input.

**Light Source:** High output LED.

**Dimming:** Dims to 10% with an electronic low voltage (ELV) dimmer.

**Mounting:** Mounts directly to junction box.

**Finish:** Chrome (CH).

**Standards:** Damp location listed. ADA compliant.

**Installation:** Requires Transformer to be recessed within the junction box.

### FIXTURE PERFORMANCE

Model	Watt	# of LEDs	LED Lumens	Photometric Lumens w/o shield
<b>WS-3326</b>	22W	48	1250	760
<b>WS-3338</b>	38W	96	2500	1440

Photometric Lumens w/shield
490
845

### ORDER NUMBER

Model	Length	Finish
<b>WS-33</b>	<b>26</b> 26"	<b>CH</b> Chrome
	<b>38</b> 38"	



Example: **WS-3326-CH**

### REPLACEMENT GLASS

Model	Fixture
<b>RPL-GLA-3326</b>	WS-3326
<b>RPL-GLA-3338</b>	WS-3338

### REPLACEMENT METAL PLATE

<b>RPL-PLA-3326-CH</b>	WS-3326
<b>RPL-PLA-3338-CH</b>	WS-3338

Modern Forms – A WAC Lighting Company  
www.modernforms.com  
Phone (800) 526.2588 • Fax (800) 526.2585

Headquarters/Eastern Distribution Center  
44 Harbor Park Drive • Port Washington, NY 11050  
Phone (516) 515.5000 • Fax (516) 515.5050

Western Distribution Center  
1750 Archibald Avenue • Ontario, CA 91760  
Phone (800) 526.2588 • Fax (800) 526.2585