

WS-20418

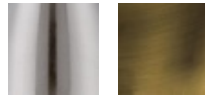
Project: \_\_\_\_\_

Location: \_\_\_\_\_

Fixture Type: \_\_\_\_\_

Catalog Number: \_\_\_\_\_

**AVAILABLE FINISHES:**



# Javelin

WS-20418

**PRODUCT DESCRIPTION**

Light interaction. Lit from behind by hidden LEDs, an arrow of Spanish Alabaster embraced by a metallic band creates a luminous glow from natural veining and patterning inherent to this lovely stone.

**FEATURES**

- Driver concealed within the canopy
- First class quality Spanish alabaster
- Natural alabaster with unique veining in each crafted piece

**SPECIFICATIONS**

|                     |   |
|---------------------|---|
| <b>Rated Life</b>   | 50000 Hours   |
| <b>Standards</b>    | ETL, cETL, Damp Location Listed, ADA                        |
| <b>Input</b>        | 120/277V, 50/60Hz   |
| <b>Dimming</b>      | ELV: 100-5%, TRIAC: 100-10%                                 |
| <b>Mounting</b>     | Can be mounted on wall in all orientations                  |
| <b>Color Temp</b>   | 3000K   |
| <b>CRI</b>          | 90  |
| <b>Construction</b> | Steel body with extruded aluminum frame and alabaster shade |

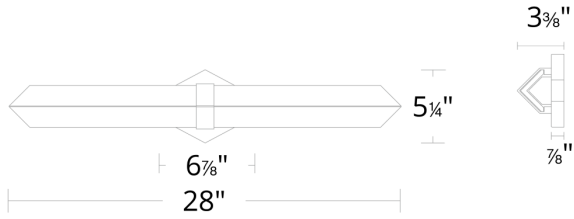
**REPLACEMENT PARTS**

RPL-GLA-20418 - Alabaster

| Model & Size | Color Temp | Finish            | LED Watts | LED Lumens | Delivered Lumens |
|--------------|------------|-------------------|-----------|------------|------------------|
| WS-20418 18" | 3000K      | AB Aged Brass     | 15.4W     | 1411       | 795              |
|              | 3000K      | BN Brushed Nickel | 15.4W     | 1411       | 795              |

Example: **WS-20418-BN**

For custom requests please contact [customs@modernforms.com](mailto:customs@modernforms.com)



WS-20428

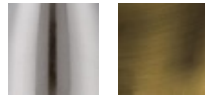
Project: \_\_\_\_\_

Location: \_\_\_\_\_

Fixture Type: \_\_\_\_\_

Catalog Number: \_\_\_\_\_

**AVAILABLE FINISHES:**



# Javelin

WS-20428

**PRODUCT DESCRIPTION**

Light interaction. Lit from behind by hidden LEDs, an arrow of Spanish Alabaster embraced by a metallic band creates a luminous glow from natural veining and patterning inherent to this lovely stone.

**FEATURES**

- Driver concealed within the canopy
- First class quality Spanish alabaster
- Natural alabaster with unique veining in each crafted piece

**SPECIFICATIONS**

|              |   |
|--------------|---|
| Rated Life   | 50000 Hours   |
| Standards    | ETL, cETL, Damp Location Listed, ADA                        |
| Input        | 120/277V, 50/60Hz   |
| Dimming      | ELV: 100-5%, TRIAC: 100-10%                                 |
| Mounting     | Can be mounted on wall in all orientations                  |
| Color Temp   | 3000K   |
| CRI          | 90  |
| Construction | Steel body with extruded aluminum frame and alabaster shade |

**REPLACEMENT PARTS**

RPL-GLA-20428 - Alabaster

| Model & Size | Color Temp | Finish            | LED Watts | LED Lumens | Delivered Lumens |
|--------------|------------|-------------------|-----------|------------|------------------|
| WS-20428 28" | 3000K      | AB Aged Brass     | 28.1W     | 2520       | 1342             |
|              | 3000K      | BN Brushed Nickel | 28.1W     | 2520       | 1342             |

Example: **WS-20428-BN**

For custom requests please contact [customs@modernforms.com](mailto:customs@modernforms.com)