

MXZ-4C36NA3 3-TON MULTI-ZONE INVERTER HEAT-PUMP SYSTEM



Job Name:

System Reference:

Date:



FEATURES

- Variable speed INVERTER-driven compressor
- Optional base pan heater
- Quiet outdoor unit operation as low as 54 dB(A)
- High pressure protection
- Compressor thermal protection
- Compressor overcurrent detection
- Fan motor overheating/voltage protection

SPECIFICATIONS: MXZ-4C36NA3

| | | | | |
|--|--|---------------------------|--|------------------|
| Cooling ¹ (Non-Ducted // Mix // Ducted) | Maximum Capacity | BTU/H | 36,400 // 36,400 // 36,400 | |
| | Rated Capacity | BTU/H | 35,400 // 34,900 // 34,400 | |
| | Minimum Capacity | BTU/H | 11,700 // 11,500 // 11,300 | |
| | Maximum Power Input | W | 3,960 // 3,960 // 3,960 | |
| | Rated Power Input | W | 3,760 // 3,850 // 3,940 | |
| | Power Factor (208V, 230V) | % | 99.0, 99.0 // 99.0, 99.0 // 99.0, 99.0 | |
| Heating at 47°F ² (Non-Ducted // Mix // Ducted) | Maximum Capacity | BTU/H | 43,000 // 43,000 // 43,000 | |
| | Rated Capacity | BTU/H | 36,000 // 35,200 // 34,400 | |
| | Minimum Capacity | BTU/H | 18,300 // 18,800 // 19,300 | |
| | Maximum Power Input | W | 4,020 // 4,020 // 4,020 | |
| | Rated Power Input | W | 3,020 // 3,060 // 3,100 | |
| | Power Factor (208V, 230V) | % | 98.7, 98.7 // 98.8, 98.8 // 98.8, 98.8 | |
| Heating at 17°F ³ (Non-Ducted // Mix // Ducted) | Maximum Capacity | BTU/H | 26,600 // 26,600 // 26,600 | |
| | Rated Capacity | BTU/H | 22,400 // 22,400 // 22,400 | |
| | Maximum Power Input | W | 3,440 // 3,490 // 3,540 | |
| | Rated Power Input | W | 2,300 // 2,470 // 2,640 | |
| Heating at 5°F ⁴ (Non-Ducted // Mix // Ducted) | Maximum Capacity | BTU/H | 24,000 // 24,000 // 24,000 | |
| | Maximum Power Input | W | 3,320 // 3,280 // 3,240 | |
| Efficiency (Non-Ducted // Mix // Ducted) | SEER | | 19.2 // 17.6 // 16.0 | |
| | EER ¹ | | 9.41 // 9.07 // 8.73 | |
| | HSPF (IV) | | 11.0 // 10.4 // 9.8 | |
| | COP at 47°F ² | | 3.5 // 3.37 // 3.25 | |
| | COP at 17°F at Maximum Capacity ³ | | 2.27 // 2.24 // 2.2 | |
| | COP at 5°F at Maximum Capacity ⁴ | | 2.12 // 2.14 // 2.17 | |
| | ENERGY STAR® Certified | | No // No // No | |
| Electrical | Electrical Power Requirements | Voltage, Phase, Frequency | 208/230, 1, 60 | |
| | Guaranteed Voltage Range | V AC | 187-253 | |
| | Voltage: Indoor - Outdoor, S1-S2 | V AC | 208/230 | |
| | Voltage: Indoor - Outdoor, S2-S3 | V DC | 24 | |
| | Short-circuit Current Rating (SCCR) | kA | 5 | |
| | Recommended Fuse/Breaker Size | A | 25 | |
| | Recommended Wire Size | AWG | 14 | |
| | Minimum Circuit Ampacity | A | 23.1 | |
| | Maximum Overcurrent Protection | A | 25 | |
| | Fan Motor Full Load Amperage | A | 2.43 | |
| Outdoor unit | Airflow Rate (Cooling / Heating) | CFM | 2,287 / 2,382 | |
| | Refrigerant Control | | LEV | |
| | Defrost Method | | Reverse Cycle | |
| | Heat Exchanger Type | | Plate fin coil | |
| | Sound Pressure Level, Cooling ¹ | dB(A) | 54 | |
| | Sound Pressure Level, Heating ² | dB(A) | 56 | |
| | Compressor Type | | DC INVERTER-driven Twin Rotary | |
| | Compressor Model | | SNB220FQGM/C | |
| | Compressor Rated Load Amps | A | 12 | |
| | Compressor Locked Rotor Amps | A | 13.7 | |
| | Compressor Oil Type // Charge | oz. | FV50S // 23.7 | |
| | Base Pan Heater | | Optional | |
| | Unit Dimensions | W: In. [mm] | | 37-13/32 [950] |
| | | D: In. [mm] | | 13 [330] |
| | | H: In. [mm] | | 31-11/32 [796] |
| | Package Dimensions | W: In. [mm] | | 40-15/16 [1,040] |
| | | D: In. [mm] | | 17-11/16 [450] |
| H: In. [mm] | | | 40-11/16 [1,033] | |
| Unit Weight | Lbs.[kg] | | 139 [63] | |
| Package Weight | Lbs.[kg] | | 159 [72] | |
| Outdoor unit operating temperature range | Cooling Intake Air Temp (Maximum / Minimum ^A) | °FDB | 115 / 14 | |
| | Cooling Thermal Lock-out / Re-start Temperatures | °FDB | 10.4 / 14 | |
| | Heating Intake Air Temp (Maximum / Minimum) | °FWB | 65 / 5 | |
| | Heating Thermal Lock-out / Re-start Temperatures | °FDB | 1.4 / 5 | |
| Refrigerant | Charge | Lbs, oz | 6.0, 13.0 | |
| | Chargeless Piping Length | Ft. [m] | 98.0 [30.0] | |
| | Additional Refrigerant Charge Per Additional Piping Length | oz./Ft. [g/m] | 0.216 [20] | |

NOTES:

AHRI Rated Conditions

(Rated data is determined at a fixed compressor speed)

¹Cooling (Indoor // Outdoor)

²Heating at 47°F (Indoor // Outdoor)

³Heating at 17°F (Indoor // Outdoor)

°F 80 DB, 67 WB // 95 DB, 75 WB

°F 70 DB, 60 WB // 47 DB, 43 WB

°F 70 DB, 60 WB // 17 DB, 15 WB

Conditions

⁴Heating at 5°F (Indoor // Outdoor)

°F 70 DB, 60 WB // 5 DB, 4 WB

*Applications should be restricted to comfort cooling only; equipment cooling applications are not recommended for low ambient temperature conditions.

^A 5°F DB - 115°F DB when optional wind baffles are installed

For actual capacity performance based on indoor unit type and number of indoor units connected, please refer to MXZ Operational Performance.

Although the maximum connectable capacity is 130%, the outdoor unit cannot provide more than 100% of the rated capacity. Please utilize this over capacity capability for load shedding or applications where it is known that all connected units will NOT be operating at the same time.

SPECIFICATIONS: MXZ-4C36NA3

| | | | |
|------------------------|--|---------|--|
| Indoor unit connection | Maximum Number of Connected IDU | | 4 |
| | Minimum Number of Connected IDU | | 2 |
| | Minimum connected capacity | BTU/H | 12,000 |
| | Maximum connected capacity | BTU/H | 42,000 |
| Piping | Liquid Pipe Size O.D. (Flared) | In.[mm] | A,B,C,D: 1/4 [A,B,C,D: 6.35] |
| | Gas Pipe Size O.D. (Flared) | In.[mm] | A: 1/2; B,C,D: 3/8 [A: 12.72; B,C,D: 9.52] |
| | Total Piping Length | Ft. [m] | 230 [70] |
| | Maximum Height Difference, ODU above IDU | Ft. [m] | 49 [15] |
| | Maximum Height Difference, ODU below IDU | Ft. [m] | 49 [15] |
| | Farthest Piping Length from ODU to IDU | Ft. [m] | 82 [25] |
| | Maximum Number of Bends for IDU | | 70 |

NOTES:

AHRI Rated Conditions (Rated data is determined at a fixed compressor speed)

| | | |
|--|----|------------------------------|
| ¹ Cooling (Indoor // Outdoor) | °F | 80 DB, 67 WB // 95 DB, 75 WB |
| ² Heating at 47°F (Indoor // Outdoor) | °F | 70 DB, 60 WB // 47 DB, 43 WB |
| ³ Heating at 17°F (Indoor // Outdoor) | °F | 70 DB, 60 WB // 17 DB, 15 WB |

Conditions ⁴Heating at 5°F (Indoor // Outdoor) °F 70 DB, 60 WB // 5 DB, 4 WB

*Applications should be restricted to comfort cooling only; equipment cooling applications are not recommended for low ambient temperature conditions.

^A 5°F DB - 115°F DB when optional wind baffles are installed

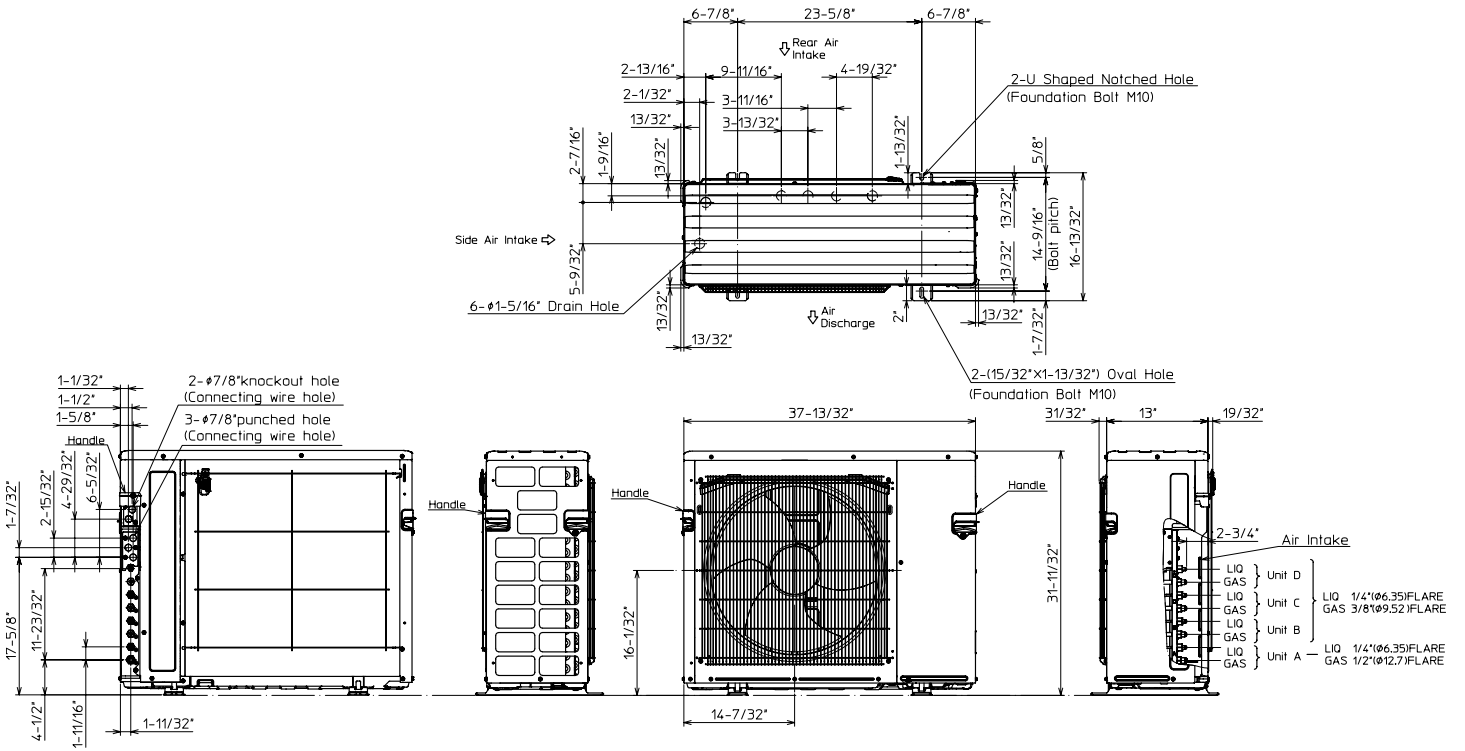
For actual capacity performance based on indoor unit type and number of indoor units connected, please refer to MXZ Operational Performance. Although the maximum connectable capacity is 130%, the outdoor unit cannot provide more than 100% of the rated capacity. Please utilize this over capacity capability for load shedding or applications where it is known that all connected units will NOT be operating at the same time.

OUTDOOR UNIT ACCESSORIES: MXZ-4C36NA3

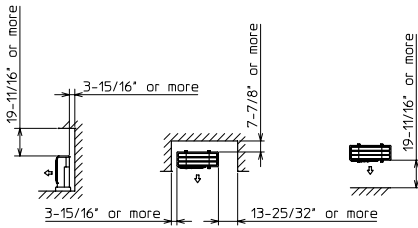
| | | |
|-------------------------|--|---------------|
| Ball Valve | Refrigeration Ball Valve - 1/2" | BV12FFSI2 |
| | Refrigeration Ball Valve - 1/4" | BV14FFSI2 |
| | Refrigeration Ball Valve - 3/8" | BV38FFSI2 |
| | Refrigeration Ball Valve - 5/8" | BV58FFSI2 |
| Control Wire | M-Net Control Wire, 1,000' Roll (16-AWG, Standard, Twisted Pair, Shielded, Jacketed- Plenum rated) | CW162S-1000 |
| | M-Net Control Wire, 250' Roll (16-AWG, Standard, Twisted Pair, Shielded, Jacketed- Plenum rated) | CW162S-250 |
| Drain Socket | Drain Socket | PAC-SG60DS-E |
| Hail Guards | Hail Guard | HG-A9 |
| M-NET Converter | M-NET Converter | PAC-IF01MNT-E |
| Mini-Split Wire | 14 Gauge, 4 wire MiniSplit Cable—250 ft. roll | S144-250 |
| | 14 Gauge, 4 wire MiniSplit Cable—250 ft. roll | SW144-250 |
| | 14 Gauge, 4 wire MiniSplit Cable—50 ft. roll | S144-50 |
| | 14 Gauge, 4 wire MiniSplit Cable—50 ft. roll | SW144-50 |
| | 16 Gauge, 4 wire MiniSplit Cable—250 ft. roll | S164-250 |
| | 16 Gauge, 4 wire MiniSplit Cable—250 ft. roll | SW164-250 |
| | 16 Gauge, 4 wire MiniSplit Cable—50 ft. roll | S164-50 |
| | 16 Gauge, 4 wire MiniSplit Cable—50 ft. roll | SW164-50 |
| Mounting Pad | Condensing Unit Mounting Pad: 16" x 36" x 3" | ULTRILITE1 |
| | Outdoor Unit 3-1/4 inch Mounting Base (Pair) - Plastic | DSD-400P |
| Optional Defrost Heater | Optional Defrost Heater | PAC-645BH-E |
| Port Adapter | Adaptor: 1/2" x 3/8" | MAC-A455JP-E |
| | Adaptor: 1/2" x 5/8" | MAC-A456JP-E |
| | Adaptor: 3/8" x 1/2" | MAC-A454JP-E |
| | Adaptor: 3/8" x 5/8" | PAC-SG76RJ-E |
| Stand | 18" Single Fan Stand | QSMS1801M |
| | 24" Single Fan Stand | QSMS2401M |
| | Condenser Wall Bracket | QSWB2000M-1 |
| | Condenser Wall Bracket - Stainless Steel Finish | QSWBSS |
| | Outdoor Unit Stand — 12" High | QSMS1201M |

OUTDOOR UNIT DIMENSIONS: MXZ-4C36NA3

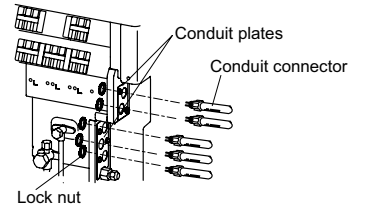
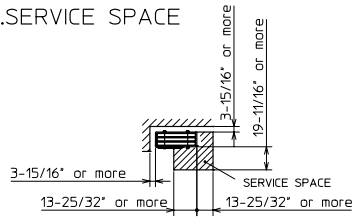
Unit: inch (mm)



1.FREE SPACE



2.SERVICE SPACE



1340 Satellite Boulevard Suwanee, GA 30024
Toll Free: 800-433-4822 www.mehvac.com



MSZ-GS09NA

9,000 BTU/H WALL-MOUNTED INDOOR UNIT



Job Name:

System Reference:

Date:



GENERAL FEATURES

- Slim wall-mounted indoor units provide zone comfort control
- Dual Barrier Coating applied to the heat exchanger, vanes and fan to prevent hydrophilic and hydrophobic dirt build-up
- Optional Microparticle Filter designed to capture PM2.5
- The outdoor unit powers the indoor unit, and should a power outage occur, the system is automatically restarted when power returns
- Quiet operation
- Smart Set: recalls a preferred preset temperature setting at the touch of a button
- Built-in backup/auxiliary heater control available
- Multiple fan speed options: Quiet, Low, Medium, High, Super-high, Auto
- Multiple control options available:
 - Back-lit screen handheld remote controller (provided with the unit)
 - kumo cloud® smart device app for remote access
 - Third-party interface options
 - Wired or wireless controllers

| Specifications | | System |
|---------------------------------|-------------------------------------|--|
| Unit Type | | MSZ-GS09NA |
| Cooling Capacity ^{1,3} | BTU/H | 9,000 |
| Heating Capacity ^{2,3} | BTU/H | 10,900 |
| Electrical | Voltage, Phase, Frequency | 208/230, 1, 60 |
| | Guaranteed Voltage Range | V AC 187 - 253 |
| | Voltage: Indoor - Outdoor, S1-S2 | V AC 208/230 |
| | Voltage: Indoor - Outdoor, S2-S3 | V DC 24 |
| | Short-circuit Current Rating [SCCR] | kA 5 |
| Indoor Unit | MCA | A 1.0 |
| | Fan Motor Full Load Amperage | A 0.5 |
| | Fan Motor Output | W 30 |
| | Airflow Rate at Cooling, Dry | CFM 134-160-222-307-381 |
| | Airflow Rate at Cooling, Wet | CFM 121-144-200-276-343 |
| | Airflow Rate at Heating, Dry | CFM 134-160-222-307-390 |
| | Sound Pressure Level [Cooling] | dB[A] 19-22-30-37-43 |
| | Sound Pressure Level [Heating] | dB[A] 19-22-30-37-43 |
| | Drain Pipe Size | In. [mm] 5/8 [15.88] |
| | Coating on Heat Exchanger | Dual Barrier Coating |
| | External Finish Color | Munsell 1.0Y 9.2/0.2 |
| | Unit Dimensions | W x D x H: In. [mm] 31-7/16 x 9-1/8 x 11-5/8 [798 x 232 x 295] |
| | Package Dimensions | W x D x H: In. [mm] 33-1/2 x 12 x 14 [850 x 300 x 350] |
| | Unit Weight | Lbs. [kg] 23 [10.4] |
| | Package Weight | Lbs. [kg] 26 [11.5] |
| Refrigerant | Type R410A | |
| Piping | Gas Pipe Size O.D. [Flared] | In.[mm] 3/8 [9.52] |
| | Liquid Pipe Size O.D. [Flared] | In.[mm] 1/4 [6.35] |

NOTES:
 Conditions ¹Cooling (Indoor // Outdoor) °F 80 DB, 67 WB // 95 DB, 75 WB
²Heating at 47°F (Indoor // Outdoor) °F 70 DB, 60 WB // 47 DB, 43 WB

³Capacity varies based on the number of indoor units operating and the model of the Multi-zone Outdoor Unit. For reference to connected capacity charts, please refer Multi-zone Outdoor Unit Operational Performance.

INDOOR UNIT ACCESSORIES: MSZ-GS09NA

| | | |
|----------------------------|---|-------------------|
| Control Interface | BACnet® and Modbus® Interface | PAC-UKPRC001-CN-1 |
| | CN24 Relay Kit | CN24RELAY-KIT-CM3 |
| | IT Extender | PAC-WHS01IE-E |
| | kumo station® for kumo cloud® | PAC-WHS01HC-E |
| | System Control Interface | MAC-334IF-E |
| | Thermostat Interface | PAC-US444CN-1 |
| | Thermostat Interface | PAC-US445CN-1 |
| | USNAP Adapter | PAC-WHS01UP-E |
| | Wireless Interface for kumo cloud® | PAC-USWHS002-WF-2 |
| Remote Sensor | Wired Remote Sensor | M21EAA307 |
| | Wireless temperature and humidity sensor for kumo cloud® | PAC-USWHS003-TH-1 |
| Wired Remote Controller | Deluxe Wired MA Remote Controller† | PAR-40MAAU |
| | Simple Ductless Wired Remote Controller | PAC-SDW01RC-1 |
| | Simple MA Remote Controller† | PAC-YT53CRAU-J |
| | Touch MA Controller† | PAR-CT01MAU-SB |
| Wireless Remote Controller | kumo touch™ RedLINK™ Wireless Controller | MHK2 |
| | Lockdown bracket for remote controller | RCMKP1CB |
| Condensate | Blue Diamond (Advanced) Mini Condensate Pump w/ Reservoir & Sensor (208/230V) [recommended] | X87-721 |
| | Blue Diamond (MegaBlue Advanced) Condensate Pump w/ Reservoir & Sensor | X87-835 |
| | Blue Diamond Alarm Extension Cable — 6.5 Ft. | C13-192 |
| | Blue Diamond MultiTank — collection tank for use with multiple pumps | C21-014 |
| | Blue Diamond Sensor Extension Cable — 15 Ft. | C13-103 |
| | Drain Pan Level Sensor/Control | SS610E |
| | Fascia Kit for MicroBlue Pump, mounts the MicroBlue and sensor directly beneath indoor unit | T18-016 |
| | Refco Condensate Pump (100-240 VAC) | GOBI-II |
| | Refco Condensate Pump (100-240 VAC) up to 120,000 BTU/H | COMBI |
| Saueremann Condensate Pump | SI30-230 | |
| Disconnect Switch | (30A/600V/UL) [fits 2" X 4" utility box] - Black | TAZ-MS303 |
| | (30A/600V/UL) [fits 2" X 4" utility box] - White | TAZ-MS303W |
| Filter | Anti-allergy Enzyme Filter | MAC-408FT-E |
| | Microparticle (PM2.5) Filter | MAC-EMF515FT-E |

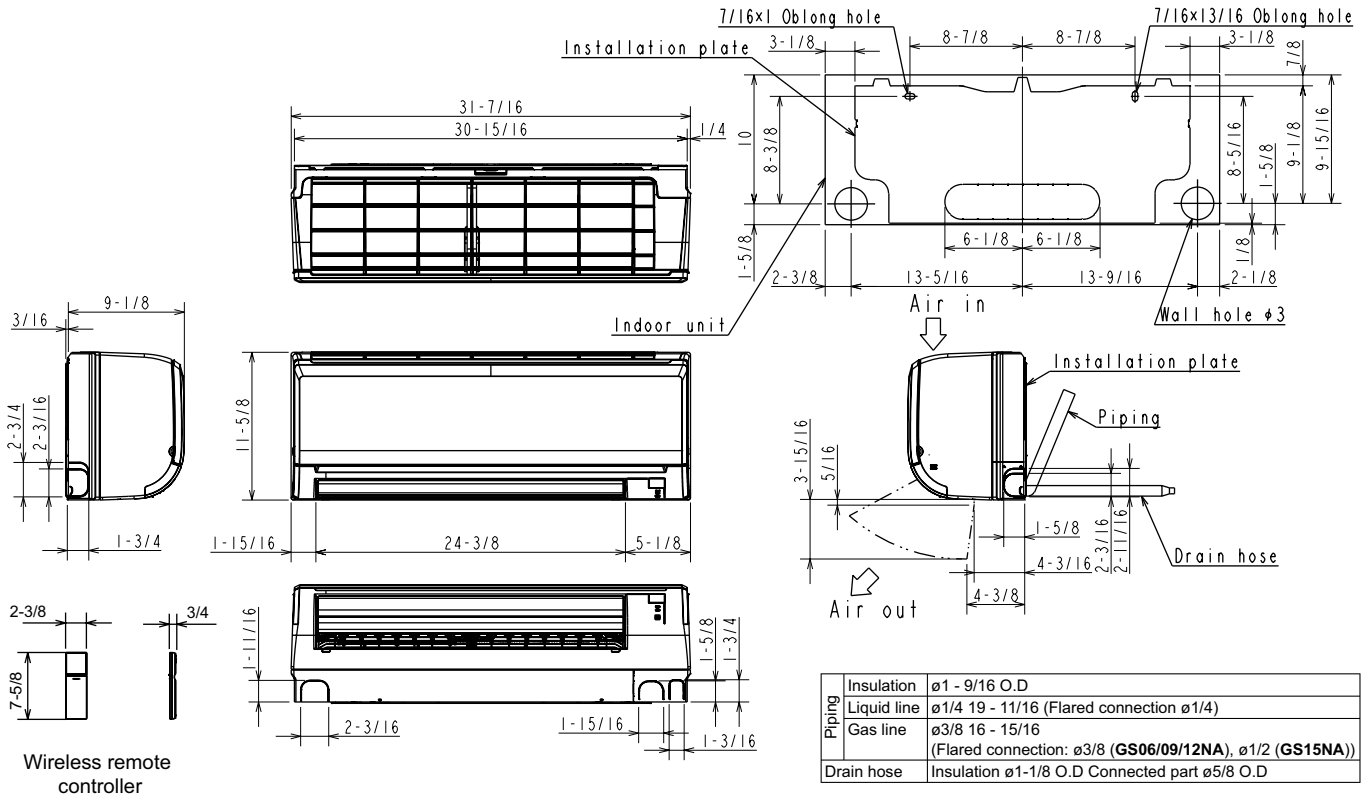
NOTES:

†Requires MAC-334IF-E

- M-Series EZ FIT® Recessed Ceiling Cassette, Floor-mount and Wall-mount
Allows indoor units to connect to an MA Controller:
 - Deluxe MA Remote Controller
 - Simple MA Controller
 - Touch MA Controller

INDOOR UNIT DIMENSIONS: MSZ-GS09NA

Unit: inch



1340 Satellite Boulevard Suwanee, GA 30024
Toll Free: 800-433-4822 www.mehvac.com

FORM# MSZ-GS09NA-U1 - 202304



MSZ-GS12NA

12,000 BTU/H WALL-MOUNTED INDOOR UNIT



Job Name:

System Reference:

Date:



GENERAL FEATURES

- Slim wall-mounted indoor units provide zone comfort control
- Dual Barrier Coating applied to the heat exchanger, vanes and fan to prevent hydrophilic and hydrophobic dirt build-up
- Optional Microparticle Filter designed to capture PM2.5
- The outdoor unit powers the indoor unit, and should a power outage occur, the system is automatically restarted when power returns
- Quiet operation
- Smart Set: recalls a preferred preset temperature setting at the touch of a button
- Built-in backup/auxiliary heater control available
- Multiple fan speed options: Quiet, Low, Medium, High, Super-high, Auto
- Multiple control options available:
 - Back-lit screen handheld remote controller (provided with the unit)
 - kumo cloud® smart device app for remote access
 - Third-party interface options
 - Wired or wireless controllers

| Specifications | | System | |
|---------------------------------|-------------------------------------|---------------------|--|
| Unit Type | | MSZ-GS12NA | |
| Cooling Capacity ^{1,3} | BTU/H | 12,000 | |
| Heating Capacity ^{2,3} | BTU/H | 14,400 | |
| Electrical | Voltage, Phase, Frequency | 208/230, 1, 60 | |
| | Guaranteed Voltage Range | 187 - 253 | |
| | Voltage: Indoor - Outdoor, S1-S2 | 208/230 | |
| | Voltage: Indoor - Outdoor, S2-S3 | 24 | |
| | Short-circuit Current Rating [SCCR] | 5 | |
| Indoor Unit | MCA | 1.0 | |
| | Fan Motor Full Load Amperage | 0.5 | |
| | Fan Motor Output | 30 | |
| | Airflow Rate at Cooling, Dry | CFM | 134-160-222-307-381 |
| | Airflow Rate at Cooling, Wet | CFM | 121-144-200-276-343 |
| | Airflow Rate at Heating, Dry | CFM | 134-160-222-307-390 |
| | Sound Pressure Level [Cooling] | dB[A] | 19-22-30-37-45 |
| | Sound Pressure Level [Heating] | dB[A] | 19-22-30-37-43 |
| | Drain Pipe Size | In. [mm] | 5/8 [15.88] |
| | Coating on Heat Exchanger | | Dual Barrier Coating |
| | External Finish Color | | Munsell 1.0Y 9.2/0.2 |
| | Unit Dimensions | W x D x H: In. [mm] | 31-7/16 x 9-1/8 x 11-5/8 [798 x 232 x 295] |
| | Package Dimensions | W x D x H: In. [mm] | 33-1/2 x 12 x 14 [850 x 300 x 350] |
| | Unit Weight | Lbs. [kg] | 23 [10.4] |
| | Package Weight | Lbs. [kg] | 26 [11.5] |
| Refrigerant | Type | R410A | |
| Piping | Gas Pipe Size O.D. [Flared] | 3/8 [9.52] | |
| | Liquid Pipe Size O.D. [Flared] | 1/4 [6.35] | |

NOTES:
 Conditions ¹Cooling (Indoor // Outdoor) °F 80 DB, 67 WB // 95 DB, 75 WB
²Heating at 47°F (Indoor // Outdoor) °F 70 DB, 60 WB // 47 DB, 43 WB

³Capacity varies based on the number of indoor units operating and the model of the Multi-zone Outdoor Unit. For reference to connected capacity charts, please refer Multi-zone Outdoor Unit Operational Performance.

INDOOR UNIT ACCESSORIES: MSZ-GS12NA

| | | |
|-----------------------------|---|-------------------|
| Control Interface | BACnet® and Modbus® Interface | PAC-UKPRC001-CN-1 |
| | CN24 Relay Kit | CN24RELAY-KIT-CM3 |
| | IT Extender | PAC-WHS01IE-E |
| | kumo station® for kumo cloud® | PAC-WHS01HC-E |
| | System Control Interface | MAC-334IF-E |
| | Thermostat Interface | PAC-US444CN-1 |
| | Thermostat Interface | PAC-US445CN-1 |
| | USNAP Adapter | PAC-WHS01UP-E |
| | Wireless Interface for kumo cloud® | PAC-USWHS002-WF-2 |
| Remote Sensor | Wired Remote Sensor | M21EAA307 |
| | Wireless temperature and humidity sensor for kumo cloud® | PAC-USWHS003-TH-1 |
| Wired Remote Controller | Deluxe Wired MA Remote Controller† | PAR-40MAAU |
| | Simple Ductless Wired Remote Controller | PAC-SDW01RC-1 |
| | Simple MA Remote Controller† | PAC-YT53CRAU-J |
| | Touch MA Controller† | PAR-CT01MAU-SB |
| Wireless Remote Controller | kumo touch™ RedLINK™ Wireless Controller | MHK2 |
| | Lockdown bracket for remote controller | RCMKP1CB |
| Condensate | Blue Diamond (Advanced) Mini Condensate Pump w/ Reservoir & Sensor (208/230V) [recommended] | X87-721 |
| | Blue Diamond (MegaBlue Advanced) Condensate Pump w/ Reservoir & Sensor | X87-835 |
| | Blue Diamond Alarm Extension Cable — 6.5 Ft. | C13-192 |
| | Blue Diamond MultiTank — collection tank for use with multiple pumps | C21-014 |
| | Blue Diamond Sensor Extension Cable — 15 Ft. | C13-103 |
| | Drain Pan Level Sensor/Control | SS610E |
| | Fascia Kit for MicroBlue Pump, mounts the MicroBlue and sensor directly beneath indoor unit | T18-016 |
| | Refco Condensate Pump (100-240 VAC) | GOBI-II |
| | Refco Condensate Pump (100-240 VAC) up to 120,000 BTU/H | COMBI |
| Sauerermann Condensate Pump | SI30-230 | |
| Disconnect Switch | (30A/600V/UL) [fits 2" X 4" utility box] - Black | TAZ-MS303 |
| | (30A/600V/UL) [fits 2" X 4" utility box] - White | TAZ-MS303W |
| Filter | Anti-allergy Enzyme Filter | MAC-408FT-E |
| | Microparticle (PM2.5) Filter | MAC-EMF515FT-E |

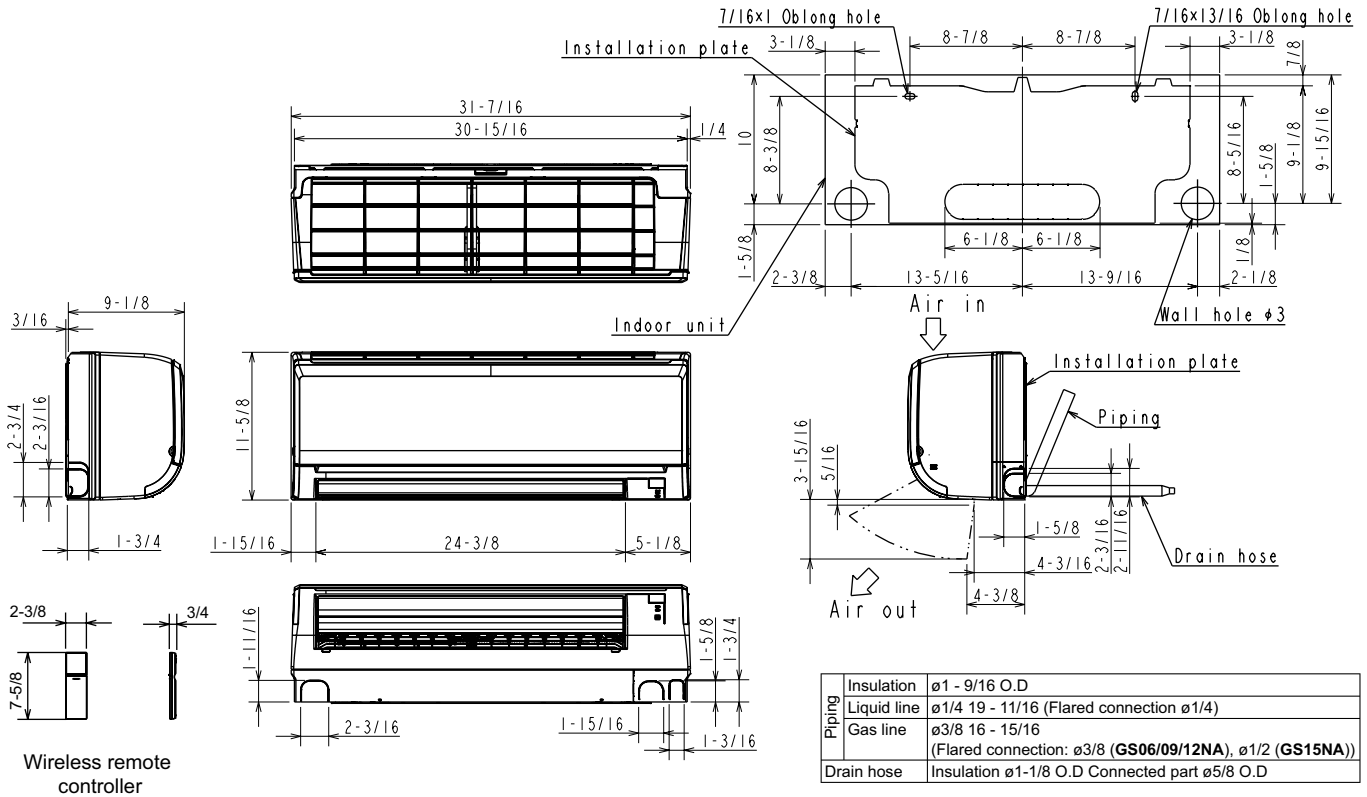
NOTES:

†Requires MAC-334IF-E

- M-Series EZ FIT® Recessed Ceiling Cassette, Floor-mount and Wall-mount
Allows indoor units to connect to an MA Controller:
 - Deluxe MA Remote Controller
 - Simple MA Controller
 - Touch MA Controller

INDOOR UNIT DIMENSIONS: MSZ-GS12NA

Unit: inch



FORM# MSZ-GS12NA-U1 - 202304

1340 Satellite Boulevard Suwanee, GA 30024
Toll Free: 800-433-4822 www.mehvac.com

