



PARTS CATALOG

R410A

Outdoor unit
[Model Name]

SUZ-KA18NA2
SUZ-KA18NAH2

[Service Ref.]

SUZ-KA18NA(H)2.TH

SUZ-KA24NA
SUZ-KA24NAH2

SUZ-KA24NA(H)2.TH

SUZ-KA30NA
SUZ-KA30NAH2

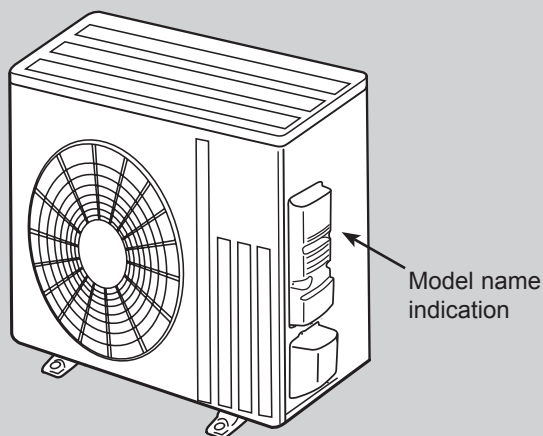
SUZ-KA30NA(H)2.TH

SUZ-KA36NA
SUZ-KA36NAH2

SUZ-KA36NA(H)2.TH

CONTENTS

1. SERVICE PARTS LIST.....	2
----------------------------	---



SUZ-KA18NA(H)2.TH

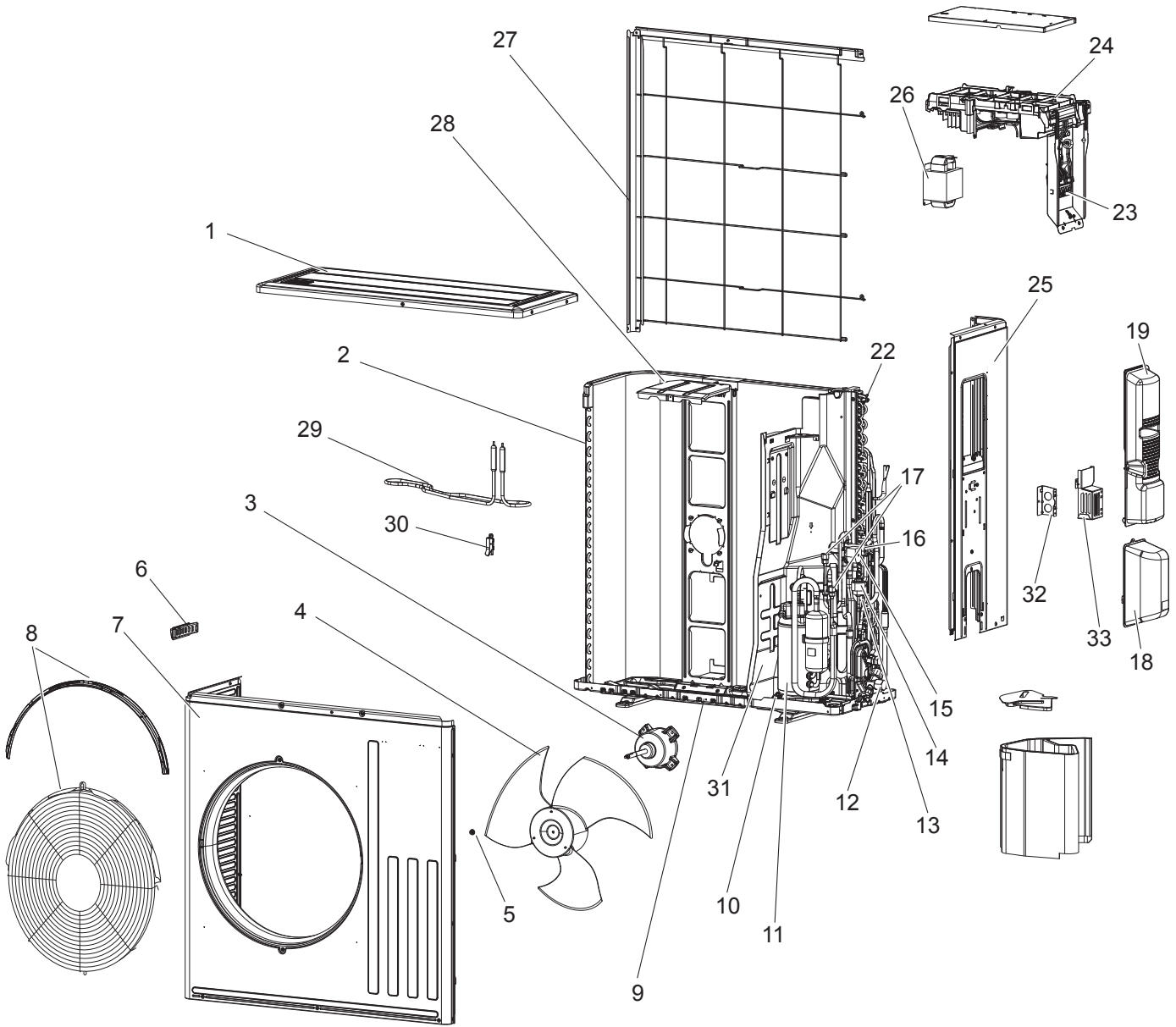
SERVICE MANUAL (OCH688)

1

SERVICE PARTS LIST

SUZ-KA18NA(H)2.TH

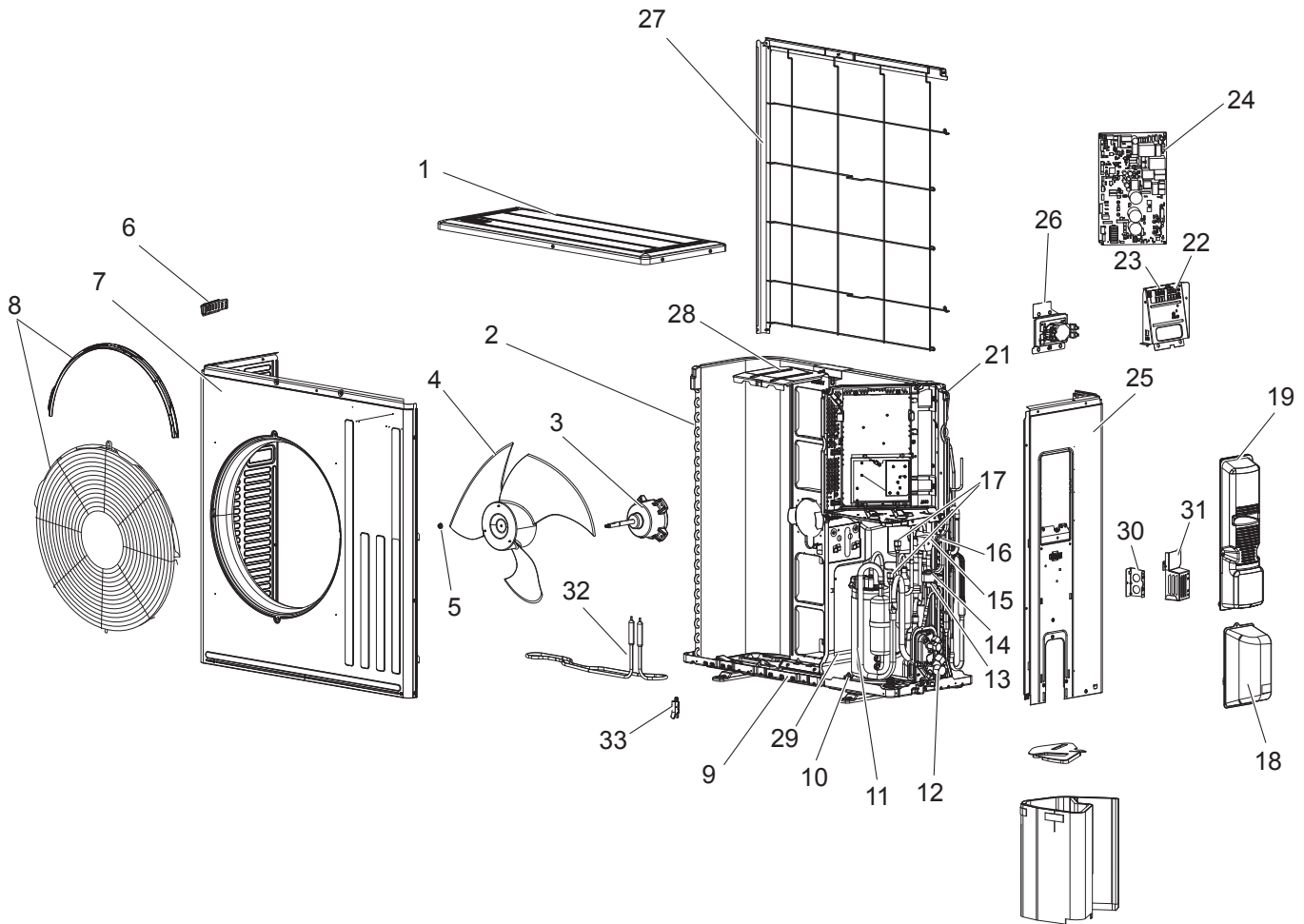
OUTDOOR UNIT STRUCTURAL PARTS, ELECTRICAL PARTS AND FUNCTIONAL PARTS



Parts numbers that are circled are not shown in the illustration.

No.	Part No.	Part Name	Symbol in Wiring Diagram	Q'ty/unit		Remarks
				SUZ-KA18 NA2.TH	SUZ-KA18 NAH2.TH	
1	E17 L07 297	TOP PANEL		1	1	
2	E12 N94 630	OUTDOOR HEAT EXCHANGER		1	1	
3	E17 M59 301	OUTDOOR FAN MOTOR	MF	1	1	
4	E12 F28 501	PROPELLER FAN		1	1	
5	E17 L05 508	PROPELLER FAN NUT		1	1	
6	E12 817 009	HANDLE		1	1	
7	E12 N94 232	CABINET		1	1	
8	E12 L87 521	FAN GUARD		1	1	Including ice guard
9	E12 F28 290	BASE		1		
	E12 H25 290				1	
10	E12 C34 506	COMPRESSOR RUBBER MOUNT		3	3	3 pcs/set
11	E12 N94 900	COMPRESSOR	MC	1	1	SNB130FQBMT
12	E17 M59 663	STOP VALVE ASSY		1	1	Including STOP VALVE(LIQ, GAS)
13	E12 29F 645	EXPANSION VALVE ASSY		1	1	Including LEV body, Capillary tube
14	E17 M59 493	EXPANSION VALVE COIL	LEV	1	1	
15	E17 M59 490	SOLENOID COIL	21S4	1	1	
16	E12 A56 961	4-WAY VALVE		1	1	
17	E12 E79 641	SERVICE PORT		2	2	
18	E12 F28 650	VALVE COVER		1	1	
19	E12 N94 245	SERVICE PANEL		1	1	
⑳	E12 29F 309	THERMISTOR ASSY AMB	RT65	1	1	
㉑	E12 Y86 306	THERMISTOR-W	RT61, RT62,	1	1	
22	E12 C34 307	THERMISTOR	RT68	1	1	
23	E12 L85 374	TERMINAL BLOCK	TB	1	1	
24	E17 M59 451	INVERTER P.C. BOARD		1	1	Including heat sink and RT64
25	E12 N94 233	BACK PANEL (OUT)		1	1	
26	E12 H21 337	REACTOR	L61	1	1	
27	E12 L87 523	CONDENSER NET		1	1	
28	E12 F28 515	MOTOR SUPPORT		1	1	
29	E12 39F 526	DEFROST HEATER			1	H including 26H
30	E12 J52 381	HEATER PROTECTOR	26H		1	
31	E12 29F 293	SEPARATOR		1		
	E17 M63 293				1	
32	E12 29F 978	CONDUIT PLATE		1	1	
33	E12 29F 979	CONDUIT COVER		1	1	
㉓	E17 N04 250	T.ST SCREW		34	34	

SUZ-KA24NA(H)2.TH SUZ-KA30NA(H)2.TH SUZ-KA36NA(H)2.TH
OUTDOOR UNIT STRUCTURAL PARTS, ELECTRICAL PARTS AND FUNCTIONAL PARTS



No.	Parts No.	Parts Name	Symbol in Wiring Diagram	Q'ty/unit						Remarks
				SUZ-KA24NA2.TH	SUZ-KA30NA2.TH	SUZ-KA36NA2.TH	SUZ-KA24NAH2.TH	SUZ-KA30NAH2.TH	SUZ-KA36NAH2.TH	
1	E17 L07 297	TOP PANEL		1	1	1	1	1	1	
2	E17 M60 630	OUTDOOR HEAT EXCHANGER		1	1	1	1	1	1	
3	E12 F28 301	OUTDOOR FAN MOTOR	MF	1	1	1	1	1	1	
4	E12 F28 501	PROPELLER FAN		1	1	1	1	1	1	
5	E17 L05 508	PROPELLER FAN NUT		1	1	1	1	1	1	

Parts numbers that are circled are not shown in the illustration.

No.	Parts No.	Parts Name	Symbol in Wiring Diagram	Q'ty/unit						Remarks
				SUZ-KA24NA2.TH	SUZ-KA30NA2.TH	SUZ-KA36NA2.TH	SUZ-KA24NAH2.TH	SUZ-KA30NAH2.TH	SUZ-KA36NAH2.TH	
6	E12 817 009	HANDLE		1	1	1	1	1	1	
7	E17 M60 232	CABINET		1	1	1	1	1	1	
8	E12 L87 521	FAN GUARD		1	1	1	1	1	1	Including ice guard
9	E12 F28 290	BASE		1	1	1				
	E12 H25 290	BASE					1	1	1	
10	E12 C34 506	COMPRESSOR RUBBER MOUNT		3	3	3	3	3	3	3 pics/SET
11	E17 M60 900	COMPRESSOR	MC	1	1	1	1	1	1	SNB220FQGM1T
12	E17 M60 663	STOP VALVE ASSY		1	1	1	1	1	1	Including STOP VALVES(LIQ, GAS)
13	E17 M60 645	EXPANSION VALVE ASSY		1	1	1	1	1	1	Including LEV body, Capillary tube
14	E17 M59 493	EXPANSION VALVE COIL	LEV	1	1	1	1	1	1	
15	E17 M59 490	SOLENOID COIL	21S4	1	1	1	1	1	1	
16	E12 A56 961	4-WAY VALVE		1	1	1	1	1	1	
17	E12 E79 641	SERVICE PORT		2	2	2	2	2	2	
18	E12 F28 650	VALVE COVER		1	1	1	1	1	1	
19	E12 L87 245	SERVICE PANEL		1	1	1	1	1	1	
20	E12 R84 308	THERMISTOR-T	RT61,RT62, RT68	1	1	1	1	1	1	
21	E12 29F 309	THERMISTOR ASSY AMB	RT65	1	1	1	1	1	1	
22	E12 L87 374	TERMINAL BLOCK	TB1	1	1	1	1	1	1	
23	E12 T16 374	TERMINAL BLOCK	TB2	1	1	1	1	1	1	
24	E17 M60 451	INVERTER P.C.BOARD		1			1			Including heat sink and RT64
	E17 M61 451				1		1			
	E17 M62 451				1			1		
25	E12 N94 233	BACK PANEL (OUT)		1	1	1	1	1	1	
26	E12 R84 337	REACTOR	L	1	1	1	1	1	1	
27	E12 L87 523	CONDENSER NET		1	1	1	1	1	1	
28	E12 F28 515	MOTOR SUPPORT		1	1	1	1	1	1	
29	E17 M60 293	SEPARATOR		1	1	1				
	E17 M64 293						1	1	1	
30	E12 29F 978	CONDUIT PLATE		1	1	1	1	1	1	
31	E12 29F 979	CONDUIT COVER		1	1	1	1	1	1	
32	E12 39F 526	DEFROST HEATER					1	1	1	H including 26H
33	E12 J52 381	HEATER PROTECTOR	26H				1	1	1	
34	E17 N04 250	T.ST SCREW		34	34	34	34	34	34	

mitsubishi electric corporation

HEAD OFFICE: TOKYO BUILDING., 2-7-3, MARUNOUCHI, CHIYODA-KU, TOKYO100-8310, JAPAN
