

Job Name:

System Reference:

Date:



Indoor Unit: MFZ-KJ12NA-U1



Wireless Remote Controller

**SPECIFICATIONS:****Rated Capacity\***

Cooling <sup>1</sup>	Btu/h / W	12,000
Heating at 47° F <sup>2</sup>	Btu/h / W	13,000

Rating Conditions per AHRI Standard:

<sup>1</sup> Cooling | Indoor: 80° F (27° C) DB / 67° F (19° C) WB ; Outdoor: 95° F (35° C) DB / 75° F (24° C) WB<sup>2</sup> Heating at 47° F | Indoor: 70° F (21° C) DB / 60° F (16° C) WB ; Outdoor: 47° F (8° C) DB / 43° F (6° C) WB

For data on specific indoor units (all ducted, all non-ducted, and both ducted and non-ducted) combinations, see the MXZ Technical and Service Manual.

Applications should be restricted to comfort cooling only; equipment cooling applications are not recommended for low ambient temperature conditions.

Electrical Power Requirements	208 / 230V, 1-Phase, 60 Hz	
-------------------------------	----------------------------	--

Minimum Circuit Ampacity (MCA)	A	1
--------------------------------	---	---

Blower Motor (ECM)	F.L.A.	0.62
--------------------	--------	------

Blower Motor Output	W	30
---------------------	---	----

Field Drainpipe Size O.D.	In.(mm)	5/8 (15)
---------------------------	---------	----------

**Airflow Rate (Quiet - Lo - Med - Hi - Super Hi)**

Cooling	DRY	CFM	138-173-208-251-275
	WET		117-147-177-213-234
Heating	DRY		138-159-180-219-343

**Sound Pressure Level (Quiet - Lo - Med - Hi - Super Hi)**

Cooling	dB(A)	21-25-30-34-38
Heating		21-24-27-32-41

Unit Dimensions (H x W x D)	In.(mm)	23-5/8 x 29-17/32 x 8-15/32 (600 x 750 x 215)
-----------------------------	---------	---

Package Dimensions (H x W x D)	In.(mm)	27-3/4 x 32-3/4 x 12 (693 x 816 x 275)
--------------------------------	---------	--

**Unit/Package Weight**

Unit	Lbs.(kg)	33 (15)
Package	Lbs.(kg)	41 (18.5)

External Finish	Munsell 1.0Y 9.2 / 0.2
-----------------	------------------------

**Refrigerant Piping (Flared)**

Liquid (High Pressure)	In.(mm)	1/4 (6.35)
Gas (Low Pressure)		3/8 (9.52)

**ACCESSORIES:****Indoor Unit**

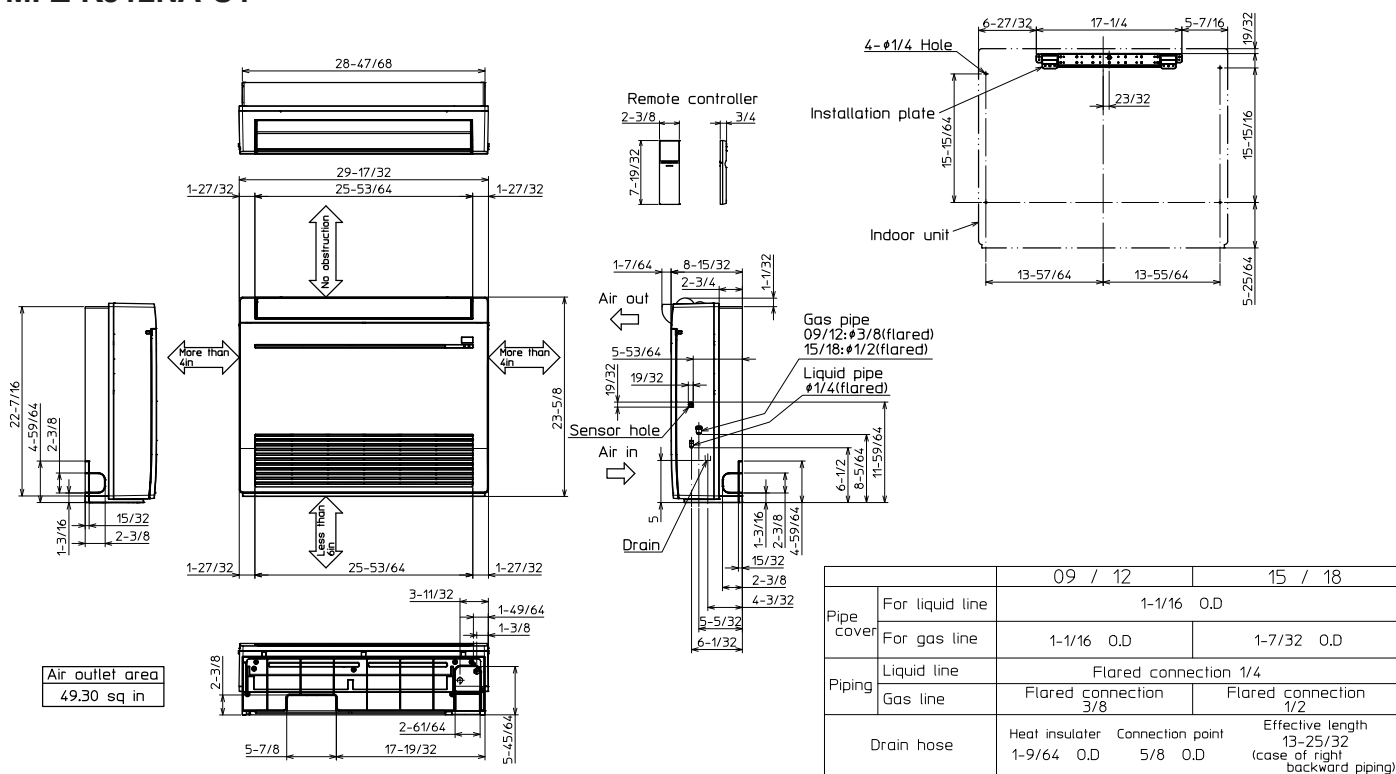
- ☐ Condensate Pump (BlueDiamond X87-711/721; 115/230V)
- ☐ Condensate Pump (Sauermann SI30-115/230; 115/230V)
- ☐ Anti-Allergy Enzyme Filter (MAC-408FT-E)
- ☐ Platinum Catalyst Deodorizing Filter (MAC-308FT-E)
- ☐ Drain Pan Level Sensor (DPLS2)

**Controls**

- ☐ Wireless Controller (MHK1)
- ☐ Wired Remote Controller PAR-32MAA (Requires MAC-333IF-E)
- ☐ Wireless Interface for kumo cloud™ (PAC-WHS01WF-E)
- ☐ Thermostat Interface (PAC-US444CN-1)

**MFZ-KJ12NA-U1**

Unit: in.



## COOLING & HEATING

1340 Satellite Boulevard. Suwanee, GA 30024  
Toll Free: 800-433-4822 [www.mehvac.com](http://www.mehvac.com)



# M-SERIES


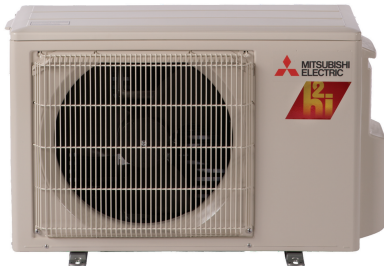

## SUBMITTAL DATA: MFZ-KJ12NA & MUFZ-KJ12NAHZ 12,000 BTU/H FLOOR-MOUNTED HEAT PUMP SYSTEM



Job Name:

System Reference:

Date:

Indoor Unit: MFZ-KJ12NA	Outdoor Unit: MUFZ-KJ12NAHZ	Wireless Remote Controller
		

### GENERAL FEATURES

- Floor-mounted indoor unit mounts on the floor or up to 5" above the floor
- Floor front panel access to the filter for ease of cleaning
- Perfect for difficult areas that may be smaller or don't have usable space on the walls
- Multiple fan speed options: Quiet, Low, Medium, High, Super-high, Auto
- Quiet operation
- Multi-flow vane for faster heating
- Multiple control options available:
  - Hand-held Remote Controller (provided with unit)
  - kumo cloud® smart device app for remote access
  - Third-party interface options
  - Wired or wireless controllers
- Unit can be recessed mounted into wall

# SPECIFICATIONS: MFZ-KJ12NA & MUFZ-KJ12NAHZ

Cooling <sup>1</sup>	Maximum Capacity	Btu/h	15,000
	Rated Capacity	Btu/h	12,000
	Minimum Capacity	Btu/h	2,300
	Maximum Power Input	W	1,380
	Rated Power Input	W	890
	Moisture Removal	Pints/h	2.7
	Sensible Heat Factor		0.70
	Power Factor	%	89/89
Heating at 47°F <sup>2</sup>	Maximum Capacity	Btu/h	22,800
	Rated Capacity	Btu/h	13,000
	Minimum Capacity	Btu/h	2,900
	Maximum Power Input	W	2,390
	Rated Power Input	W	900
	Power Factor	%	97/97
Heating at 17°F <sup>3</sup>	Maximum Capacity	Btu/h	14,800
	Rated Capacity	Btu/h	8,800
	Maximum Power Input	W	1,890
	Rated Power Input	W	930
Heating at 5°F <sup>4</sup>	Maximum Capacity	Btu/h	13,000
	Maximum Power Input	W	1810
Heating at -4°F <sup>5</sup>	Maximum Capacity	Btu/h	10,790
Heating at -13°F <sup>6</sup>	Maximum Capacity	Btu/h	8,450
Efficiency	SEER		25.5
	EER <sup>1</sup>		13.6
	HSPF (IV)		12.0
	COP at 47°F <sup>2</sup>		4.23
	COP at 17°F in Maximum Capacity <sup>3</sup>		2.30
	COP at 5°F in Maximum Capacity <sup>4</sup>		2.11
	ENERGY STAR® (ENERGY STAR products are third-party certified by an EPA-recognized Certification Body.)		YES
Electrical	Voltage, Phase, Frequency		208/230V, 1 phase, 60Hz
	Guaranteed Voltage Range	V AC	187-253
	Voltage: Indoor - Outdoor, S1-S2	V AC	208/230
	Voltage: Indoor - Outdoor, S2-S3	V DC	24
	Voltage: Indoor - Remote Controller		Wireless Type
	Recommended Fuse/Breaker Size	A	15
	Recommended Wire Size (Indoor - Outdoor)	AWG	14
Indoor Unit	MCA	A	1
	MOCP	A	15
	Blower Motor Full Load Amperage	A	0.62
	Blower Motor Output	W	30

# SPECIFICATIONS: MFZ-KJ12NA & MUFZ-KJ12NAHZ

	Airflow Rate at Cooling, Dry		CFM	417-360-272-198-138
	Airflow Rate at Cooling, Wet		CFM	354-306-231-168-117
	Airflow Rate at Heating, Dry		CFM	417-328-254-191-138
	Sound Pressure Level (Cooling)		dB(A)	46-41-34-27-21
	Sound Pressure Level (Heating)		dB(A)	46-40-34-27-21
	Drain Pipe Size		In. (mm)	5/8 (15.88)
	Heat Exchanger Type			Plate fin coil
	External Finish Color			White
	Unit Dimensions	W: In. (mm)	29-17/32 (750)	
		D: In. (mm)	8-15/33 (215)	
		H: In. (mm)	23-5/8 (600)	
	Package Dimensions	W: In. (mm)	32-2/16 (816)	
		D: In. (mm)	10-13/16 (275)	
		H: In. (mm)	27-12/16 (693)	
	Unit Weight		Lbs. (kg)	33 (15)
	Package Weight		Lbs. (kg)	41 (18.5)
Indoor Unit Operating Temperature Range	Cooling Intake Air Temp (Maximum / Minimum)*		°F	90 DB / 73 WB // 67 DB / 57 WB
	Heating Intake Air Temp (Maximum / Minimum)		°F	80 DB // 70 DB
Outdoor Unit	MCA		A	11
	MOCP		A	15
	Fan Motor Full Load Amperage		A	0.5
	Fan Motor Output		W	50
	Airflow Rate		CFM	1,074 / 1,202
	Refrigerant Control			LEV
	Defrost Method			Reverse cycle
	Heat Exchanger Type			Plate fin coil
	Sound Pressure Level, Cooling <sup>1</sup>		dB(A)	50
	Sound Pressure Level, Heating <sup>2</sup>		dB(A)	48
	Compressor Type			DC INVERTER-driven Twin Rotary
	Compressor Model			SNB140FQUMT
	Compressor Rated Load Amps		A	8.2
	Compressor Locked Rotor Amps		A	10.3
	Compressor Oil Type // Charge		oz.	FV50S // 11.8
	External Finish Color			Munsell 3Y 7.8/1/1
	Base Pan Heater			Built-in
	Unit Dimensions	W: In. (mm)	31-1/4 (800)	
		D: In. (mm)	11-1/6 (285)	
		H: In. (mm)	21-5/8 (550)	
	Package Dimensions	W: In. (mm)	37 (940)	
		D: In. (mm)	14-15/16 (380)	
		H: In. (mm)	24-13/16 (630)	

## SPECIFICATIONS: MFZ-KJ12NA & MUFZ-KJ12NAHZ

	Unit Weight	Lbs. (kg)	83 (38)
	Package Weight	Lbs. (kg)	89 (41)
Outdoor Unit Operating Temperature Range	Cooling Air Temp (Maximum / Minimum)*	°F	14 to 115
	Cooling Thermal Lock-out / Re-start Temperatures**	°F	11 / 14
	Heating Air Temp (Maximum / Minimum)	°F	-13 to 75
	Heating Thermal Lock-out / Re-start Temperatures**	°F	-18 / -14
Refrigerant	Type		R410A
	Charge	Lbs, oz	2, 10
Piping	Gas Pipe Size O.D. (Flared)	In. (mm)	3/8 (9.52)
	Liquid Pipe Size O.D. (Flared)	In. (mm)	1/4 (6.35)
	Maximum Piping Length	Ft. (m)	65 (20)
	Maximum Height Difference	Ft. (m)	40 (12)
	Maximum Number of Bends		10

### Notes

AHRI Rated Conditions (Rated data is determined at a fixed compressor speed)	<sup>1</sup> Cooling (Indoor // Outdoor)	°F	80 DB, 67 WB // 95 DB, 75 WB
	<sup>2</sup> Heating at 47°F (Indoor // Outdoor)	°F	70 DB, 60 WB // 47 DB, 43 WB
	<sup>3</sup> Heating at 17°F (Indoor // Outdoor)	°F	70 DB, 60 WB // 17 DB, 15 WB
Conditions	<sup>4</sup> Heating at 5°F (Indoor // Outdoor)	°F	70 DB, 60 WB // 5 DB, 4 WB
	<sup>5</sup> Heating at -4°F (Indoor // Outdoor)	°F	70 DB, 60 WB // -4 DB, -5 WB
	<sup>6</sup> Heating at -13°F (Indoor // Outdoor)	°F	70 DB, 60 WB // -13 DB, -14 WB

\*Applications should be restricted to comfort cooling only; equipment cooling applications are not recommended for low ambient temperature conditions.

\*\*System cuts out in heating mode to avoid thermistor error and automatically restarts at these temperatures.

## ACCESSORIES: MFZ-KJ12NA

Anti-allergy Enzyme Filter	□ MAC-408FT-E
Backlit, Wall-mounted, Wireless Controller	□ MHK1
Portable Central Controller	□ MCCH1
Wired MA Controller <sup>1</sup>	□ PAR-33MAA
Simple MA Controller <sup>1</sup>	□ PAC-YT53CRAU
Touch MA Controller <sup>1</sup>	□ PAR-CT01MAU-SB
Wired Remote Sensor	□ M21-EAA-307
Wireless Temperature and Humidity Sensor	□ PAC-USWHS003-TH-1
Outside Air Sensor for MHK1	□ MOS1
System Control Interface <sup>2</sup>	□ MAC-333IF-E
Wireless Interface	□ PAC-USWHS002-WF-1
Thermostat Interface	□ PAC-US444CN-1
kumo station®	□ PAC-WHS01HC-E
USNAP Interface	□ PAC-WHS01UP-E
IT Extender	□ PAC-WHS01IE-E
BACnet® and MODBUS® Interface	□ PAC-UKPRC001-CN-1
External Fan / Heater Control Relay Adapter	□ CN24RELAY-KIT-CM3
Lockdown Bracket for Hand-held Remote Controllers	□ RCMKP1CB
Blue Diamond Sensor Extension Cable — 15 Ft.	□ C13-103
Blue Diamond Alarm Extension Cable — 6.5 Ft.	□ C13-192
Blue Diamond MultiTank — collection tank for use with multiple pumps	□ C21-014
Blue Diamond Rubber Foot Pads	□ F10-010
Mini Condensate Pump — 230 volt application	□ SI30-230
MegaBlue Advanced Blue Diamond Condensate Pump w/ Reservoir & Sensor	□ X87-835 - 110 to 250V
MaxiBlue Advanced Blue Diamond Mini Condensate Pump w/ Reservoir & Sensor (110V) up to 48,000 Btu/h [recommended]	□ X87-711 - 110V
Advanced Blue Diamond Mini Condensate Pump w/ Reservoir & Sensor (208/230V) [recommended]	□ X87-721 - 208/230V
MicroBlue Blue Diamond Mini Condensate Pump (110/208/230V) up to 18,000 Btu/h	□ X85-003
Fascia Kit for MicroBlue Pump – mounts the MicroBlue and sensor directly beneath the indoor unit	□ T18-016
Drain Pan Level Sensor	□ DPLS2
(30A/600V/UL) [fits 2" X 4" utility box] - Black	□ TAZ-MS303
(30A/600V/UL) [fits 2" X 4" utility box] - White	□ TAZ-MS303W

<sup>1</sup> Requires MAC-333IF-E

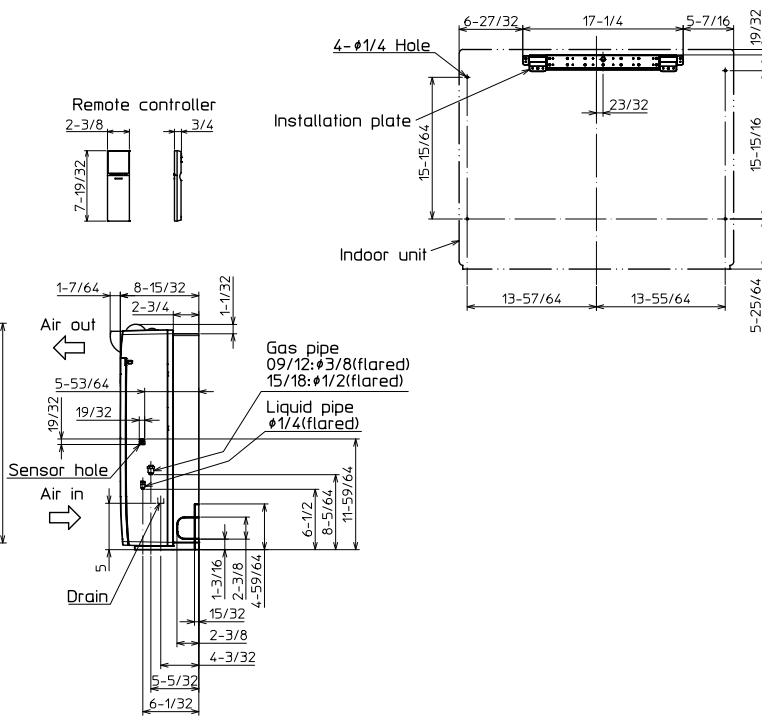
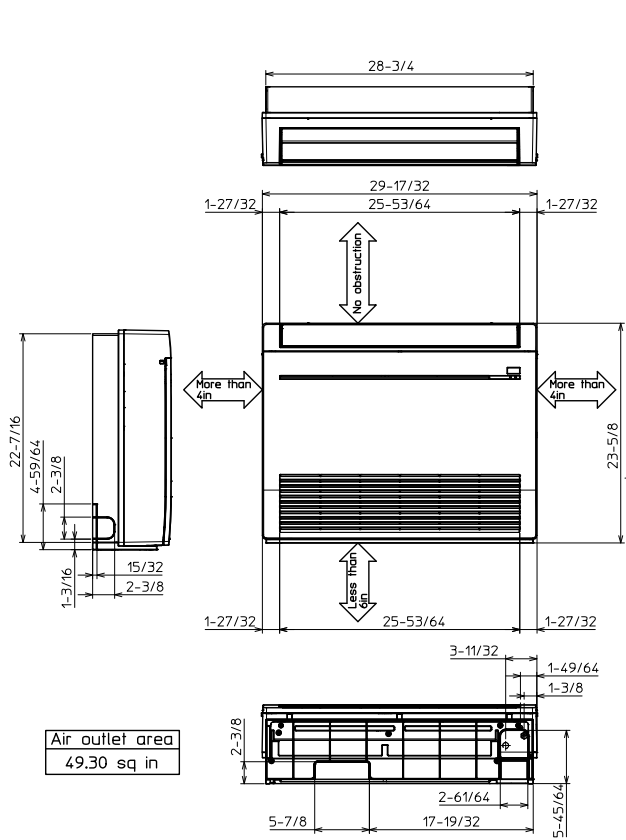
<sup>2</sup> Allows indoor units to connect to an MA Controller

## ACCESSORIES: MUFZ-KJ12NAHZ

Air Outlet Guide	□ MAC-881SG
Hail Guard	□ HG-B4
Outdoor Unit 3-1/4 inch Mounting Base (Pair) - Plastic	□ DSD-400P
Condensing Unit Mounting Pad 16" x 36" x 3"	□ ULTRILITE1
Outdoor Unit Stand — 12" High	□ QSMS1201M
Outdoor Unit Stand — 18" High	□ QSMS1801M
Outdoor Unit Stand — 24" High	□ QSMS2401M
Heavy Duty Wall Mounting Bracket— Coated Steel	□ QSWB2000M-1
Heavy Duty Wall Mounting Bracket — 316 Series Stainless Steel	□ QSWBSS
15' x 1/4" x 15' / 3/8" Lineset (Twin-Tube Insulation)	□ MLS143812T-15
30' x 1/4" x 30' / 3/8" Lineset (Twin-Tube Insulation)	□ MLS143812T-30
50' x 1/4" x 50' / 3/8" Lineset (Twin-Tube Insulation)	□ MLS143812T-50
65' x 1/4" x 65' / 3/8" Lineset (Twin-Tube Insulation)	□ MLS143812T-65

## DIMENSIONS: MFZ-KJ12NA

Unit: inch



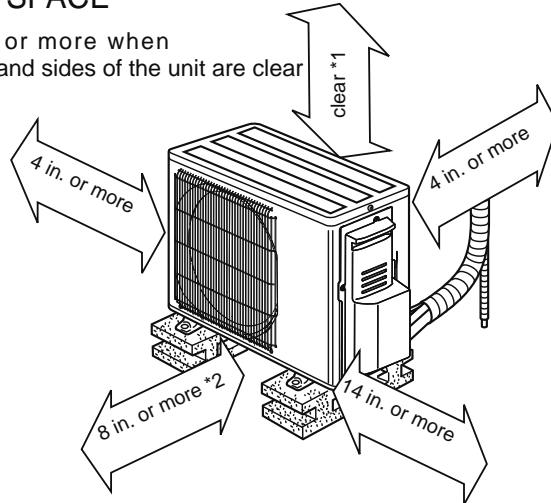
		09 / 12		15 / 18	
Pipe cover	For liquid line	1-1/16 O.D			
	For gas line	1-1/16 O.D		1-7/32 O.D	
Piping	Liquid line	Flared connection 1/4			
	Gas line	Flared connection 3/8		Flared connection 1/2	
Drain hose		Heat insulator 1-9/64 O.D	Connection point 5/8 O.D	Effective length 13-25/32 (case of right backward piping)	

# DIMENSIONS: MUFZ-KJ12NAHZ

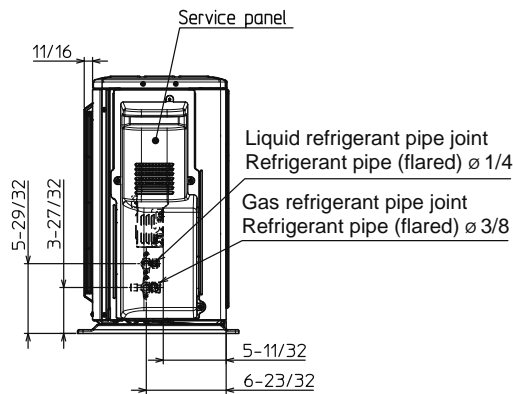
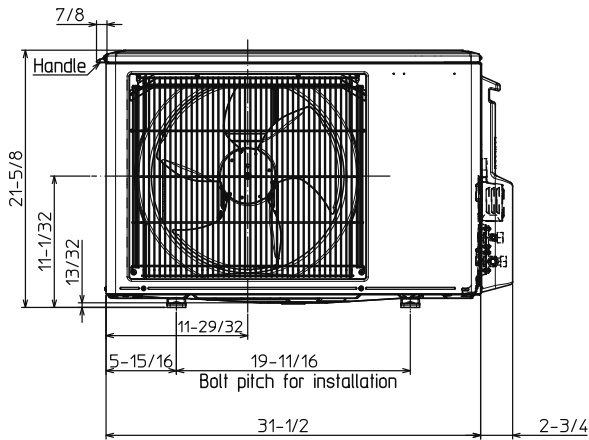
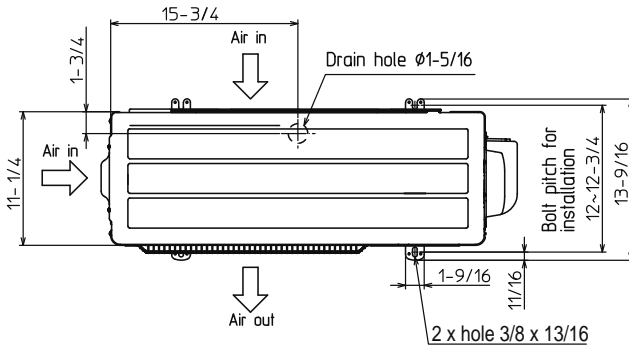
Unit: inch

## REQUIRED SPACE

\*1 4 in. or more when front and sides of the unit are clear



\*2 When any 2 sides of left, right and rear of the unit are clear



1340 Satellite Boulevard, Suwanee, GA  
002430024  
Toll Free: 800-433-4822 [www.mehvac.com](http://www.mehvac.com)

FORM# MFZ-KJ12NA / MUFZ-KJ12NAHZ - 201903



Specifications are subject to change without notice.

© 2019 Mitsubishi Electric Trane HVAC US LLC. All rights reserved.