

Job Name:

System Reference:

Date:

**MRCH2**



## MRCH2 REMOTE CONTROLLER SPECIFICATIONS

- Touch panel, Backlit, easy-to-read display
- Used RedLINK™ 3.0 wireless technology
  - Not compatible with MHK1, MOS1, and MCCH1 RedLINK 2.0 wireless technology environment.
- User functions allow user to set:
  - On/Off
  - Operation modes cool, heat, drying, fan
  - Set temperature (separate dual set points for heat and cool)
  - Fan speed setting
  - Airflow direction
- Set temperature range limits (dependent on the system connected):
  - Cooling from 50° to 99° F
  - Heating from 40° to 90° F
  - Auto from 50° to 90° F with dual temperature setting
- MHK2 Scheduling options:
  - No Schedule
  - MO-SU = Every day the same
  - MO-FR, SA, SU = 5-1-1 schedule
  - MO-FR, SA-SU = 5-2 schedule
  - Each Day = Every day individual
  - Allow kumo cloud to be schedule holder
- Hold function
- Temporary or Permanent schedule override
- Lockout:
  - On
  - Off
  - Mode
  - Fan Speed
  - Set point
  - Vane Direction
- Day/Time display with a 12 or 24-hour clock
- Supports both Fahrenheit and Celsius
- RedLINK™ Wireless Connection Status
- Filter sign display
- Diagnostics: Displays and records error codes
- Adjustable auto mode deadband

- Space temperature offset adjustment
- Space humidity offset adjustment
- Hide (on screen only)
  - Indoor temperature
  - Indoor humidity
- Temperature Sensing Source
  - MHK2
  - Indoor Unit
  - RedLINK Wireless Indoor Air Sensor (IAS)
  - Average of MHK2 and RedLINK Wireless Indoor Air Sensor (IAS)
- Indoor Humidity Source
  - MHK2
  - RedLINK Wireless Indoor Air Sensor (IAS)
  - Average of MHK2 and RedLINK Wireless Indoor Air Sensor (IAS)
- Improved indoor unit function code list
  - Indoor unit type
  - Expanded to 28 indoor unit codes
- Reset to factory default
- Uses two “AA” alkaline batteries (included)
- Dimensions: 4-5/64” x 4-5/64” x 1-1/16” (104 x 104 x 27 mm)
- Operating Ambient Temperature: 32° to 120° F (0° to 48.9° C)
- Operating Relative Humidity: 5% to 90%

## MIFH2 WIRELESS RECEIVER SPECIFICATIONS:

- Included in MHK2 Kit
- Mounts next to or near indoor units to allow MRCH2 Remote Controller operation
- Connects to indoor unit control board with MRC2 Cable
- Dimensions: 3-3/32” H x 1-3/4” W x 39/64” D (74.8 x 44.4 x 15.4 mm)
- Operating Ambient Temperature: -40° to 165° F (-40° to 73.9° C)
- Operating Relative Humidity: 5% to 95%

## MRC2 CABLE

- Included in MHK2 Kit in the MIFH2 box
- Connects MIFH2 Wireless Receiver to the CN105 connector on indoor unit control board
- Length: 39-23/64" (1 m)

# MODEL: MHK2 kumo touch™



## kumo cloud & MHK2

- kumo cloud and MHK2 can work together on the same indoor unit with the following devices:
  - Wireless Interface 2
    - PAC-USWHS002-WF-2
    - Wireless Interface 2 has an additional CN105 connector on it
  - MHK2 kit
- Compatibility with indoor units:
  - All CITY MULTI®
  - All P-Series
  - All M-series

## Accessories

- Wireless Interface 2 (PAC-USWHS002-WF-2)
- CN105 IT Extender (PAC-WHS01E-E)
- RedLINK 3.0 Wireless Indoor Air Sensor
- Not sold by Mitsubishi Electric Trane HVAC LLC
- Honeywell (C7189R2002-2/U)



Specifications are subject to change without notice.  
 1340 Satellite Boulevard, Suwanee, GA 30024  
 Toll Free: 800-433-4822 www.mehvac.com  
 © 2020 Mitsubishi Electric Trane HVAC US LLC. All rights reserved.  
 M\_Submittal\_MHK2 kumo touch 03-2020

# MXZ-3C30NA3 2.5-TON MULTI-ZONE INVERTER HEAT-PUMP SYSTEM



Job Name:

System Reference:

Date:



## FEATURES

- Variable speed INVERTER-driven compressor
- Optional base pan heater
- Quiet outdoor unit operation as low as 52 dB(A)
- High pressure protection
- Compressor thermal protection
- Compressor overcurrent detection
- Fan motor overheating/voltage protection

# SPECIFICATIONS: MXZ-3C30NA3

Cooling <sup>1</sup> (Non-Ducted // Mix // Ducted)	Maximum Capacity	BTU/H	28,400 // 28,400 // 28,400	
	Rated Capacity	BTU/H	28,400 // 27,900 // 27,400	
	Minimum Capacity	BTU/H	11,600 // 11,300 // 11,000	
	Maximum Power Input	W	2,680 // 2,680 // 2,680	
	Rated Power Input	W	2,680 // 2,760 // 2,840	
	Power Factor (208V, 230V)	%	99.0, 99.0 // 99.0, 99.0 // 99.0, 99.0	
Heating at 47°F <sup>2</sup> (Non-Ducted // Mix // Ducted)	Maximum Capacity	BTU/H	36,000 // 36,000 // 36,000	
	Rated Capacity	BTU/H	28,600 // 28,100 // 27,600	
	Minimum Capacity	BTU/H	18,100 // 18,300 // 18,500	
	Maximum Power Input	W	3,300 // 3,300 // 3,300	
	Rated Power Input	W	2,150 // 2,185 // 2,220	
	Power Factor (208V, 230V)	%	98.5, 98.5 // 98.4, 98.4 // 98.2, 98.2	
Heating at 17°F <sup>3</sup> (Non-Ducted // Mix // Ducted)	Maximum Capacity	BTU/H	21,000 // 21,000 // 21,000	
	Rated Capacity	BTU/H	17,800 // 17,800 // 17,800	
	Maximum Power Input	W	2,740 // 2,780 // 2,820	
	Rated Power Input	W	1,760 // 1,830 // 1,900	
Heating at 5°F <sup>4</sup> (Non-Ducted // Mix // Ducted)	Maximum Capacity	BTU/H	18,200 // 18,200 // 18,200	
	Maximum Power Input	W	2,310 // 2,355 // 2,400	
Efficiency (Non-Ducted // Mix // Ducted)	SEER		19.0 // 17.6 // 16.2	
	EER <sup>1</sup>		10.6 // 10.12 // 9.65	
	HSPF (IV)		10.6 // 10.1 // 9.6	
	COP at 47°F <sup>2</sup>		3.9 // 3.77 // 3.65	
	COP at 17°F at Maximum Capacity <sup>3</sup>		2.25 // 2.22 // 2.18	
	COP at 5°F at Maximum Capacity <sup>4</sup>		2.31 // 2.26 // 2.22	
	ENERGY STAR <sup>®</sup> Certified		No // No // No	
Electrical	Electrical Power Requirements	Voltage, Phase, Frequency	208/230, 1, 60	
	Guaranteed Voltage Range	V AC	187-253	
	Voltage: Indoor - Outdoor, S1-S2	V AC	208/230	
	Voltage: Indoor - Outdoor, S2-S3	V DC	24	
	Short-circuit Current Rating (SCCR)	kA	5	
	Recommended Fuse/Breaker Size	A	25	
	Recommended Wire Size	AWG	14	
	Minimum Circuit Ampacity	A	22.1	
	Maximum Overcurrent Protection	A	25	
	Fan Motor Full Load Amperage	A	2.43	
Outdoor unit	Airflow Rate (Cooling / Heating)	CFM	2,287 / 2,382	
	Refrigerant Control		LEV	
	Defrost Method		Reverse Cycle	
	Heat Exchanger Type		Plate fin coil	
	Sound Pressure Level, Cooling <sup>1</sup>	dB(A)	52	
	Sound Pressure Level, Heating <sup>2</sup>	dB(A)	56	
	Compressor Type		DC INVERTER-driven Twin Rotary	
	Compressor Model		SNB220FQGMC	
	Compressor Rated Load Amps	A	12	
	Compressor Locked Rotor Amps	A	13.7	
	Compressor Oil Type // Charge	oz.	FV50S // 23.7	
	Base Pan Heater		Optional	
	Unit Dimensions	W: In. [mm]		37-13/32 [950]
		D: In. [mm]		13 [330]
		H: In. [mm]		31-11/32 [796]
	Package Dimensions	W: In. [mm]		40-15/16 [1,040]
		D: In. [mm]		17-11/16 [450]
H: In. [mm]			40-11/16 [1,033]	
Unit Weight	Lbs.[kg]		137 [62]	
Package Weight	Lbs.[kg]		157 [71]	
Outdoor unit operating temperature range	Cooling Intake Air Temp (Maximum / Minimum <sup>Δ</sup> )	°FDB	115 / 14	
	Cooling Thermal Lock-out / Re-start Temperatures	°FDB	10.4 / 14	
	Heating Intake Air Temp (Maximum / Minimum)	°FWB	65 / 5	
	Heating Thermal Lock-out / Re-start Temperatures	°FDB	1.4 / 5	
Refrigerant	Charge	Lbs, oz	6.0, 13.0	
	Chargeless Piping Length	Ft. [m]	98.0 [30.0]	
	Additional Refrigerant Charge Per Additional Piping Length	oz./Ft. [g/m]	0.216 [20]	

**NOTES:**

AHRI Rated Conditions  
(Rated data is determined at a fixed compressor speed)

<sup>1</sup>Cooling (Indoor // Outdoor) °F 80 DB, 67 WB // 95 DB, 75 WB  
<sup>2</sup>Heating at 47°F (Indoor // Outdoor) °F 70 DB, 60 WB // 47 DB, 43 WB  
<sup>3</sup>Heating at 17°F (Indoor // Outdoor) °F 70 DB, 60 WB // 17 DB, 15 WB

Conditions <sup>4</sup>Heating at 5°F (Indoor // Outdoor) °F 70 DB, 60 WB // 5 DB, 4 WB

\*Applications should be restricted to comfort cooling only; equipment cooling applications are not recommended for low ambient temperature conditions.

<sup>Δ</sup> 5°F DB - 115°F DB when optional wind baffles are installed

For actual capacity performance based on indoor unit type and number of indoor units connected, please refer to MXZ Operational Performance. Although the maximum connectable capacity is 130%, the outdoor unit cannot provide more than 100% of the rated capacity. Please utilize this over capacity capability for load shedding or applications where it is known that all connected units will NOT be operating at the same time.

## SPECIFICATIONS: MXZ-3C30NA3

Indoor unit connection	Maximum Number of Connected IDU		3
	Minimum Number of Connected IDU		2
	Minimum connected capacity	BTU/H	12,000
	Maximum connected capacity	BTU/H	36,000
Piping	Liquid Pipe Size O.D. (Flared)	In.[mm]	A,B,C: 1/4 [A,B,C: 6.35]
	Gas Pipe Size O.D. (Flared)	In.[mm]	A: 1/2; B,C: 3/8 [A: 12.72; B,C: 9.52]
	Total Piping Length	Ft. [m]	230 [70]
	Maximum Height Difference, ODU above IDU	Ft. [m]	49 [15]
	Maximum Height Difference, ODU below IDU	Ft. [m]	49 [15]
	Farthest Piping Length from ODU to IDU	Ft. [m]	82 [25]
	Maximum Number of Bends for IDU		70

**NOTES:**

AHRI Rated Conditions (Rated data is determined at a fixed compressor speed)

<sup>1</sup> Cooling (Indoor // Outdoor)	°F	80 DB, 67 WB // 95 DB, 75 WB
<sup>2</sup> Heating at 47°F (Indoor // Outdoor)	°F	70 DB, 60 WB // 47 DB, 43 WB
<sup>3</sup> Heating at 17°F (Indoor // Outdoor)	°F	70 DB, 60 WB // 17 DB, 15 WB

Conditions <sup>4</sup>Heating at 5°F (Indoor // Outdoor) °F 70 DB, 60 WB // 5 DB, 4 WB

\*Applications should be restricted to comfort cooling only; equipment cooling applications are not recommended for low ambient temperature conditions.

<sup>A</sup> 5°F DB - 115°F DB when optional wind baffles are installed

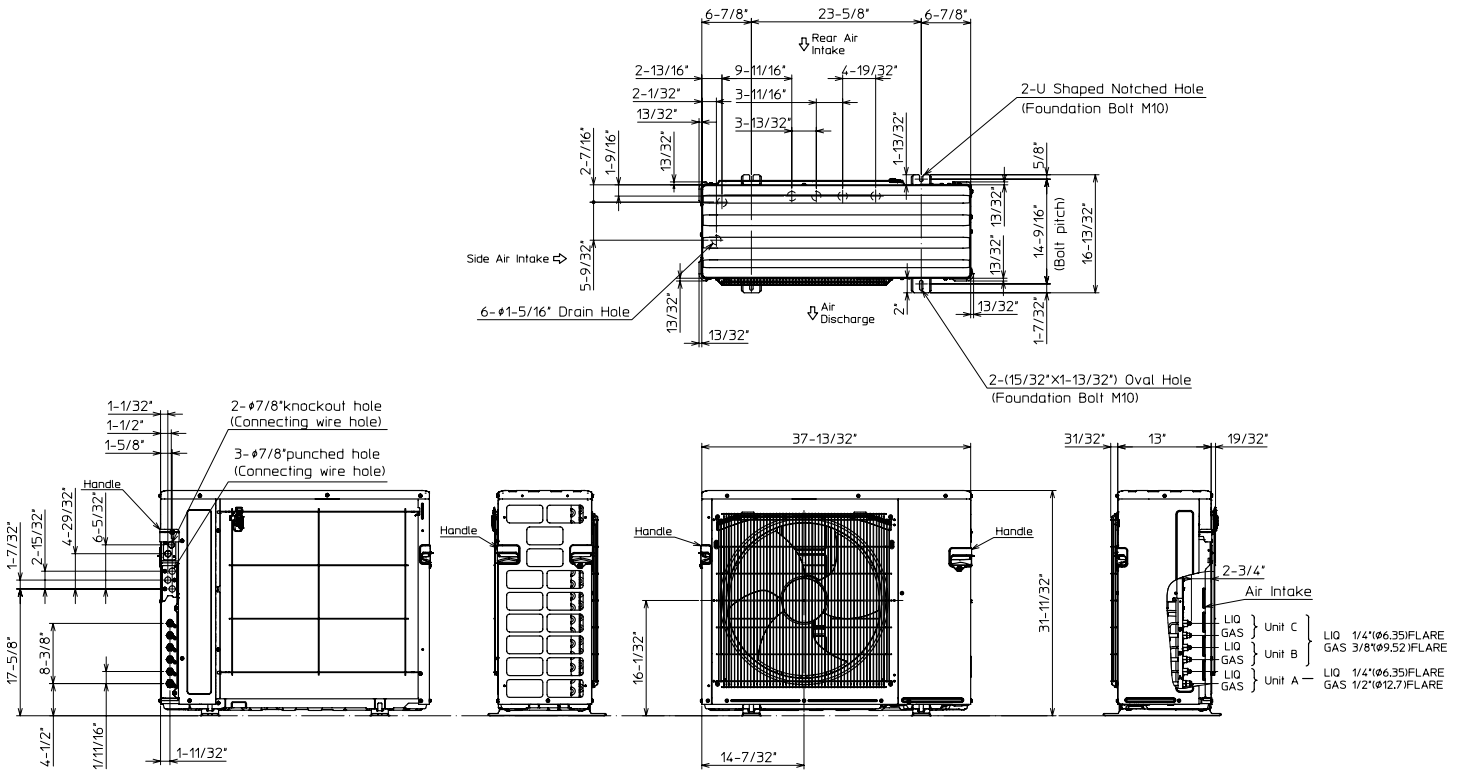
For actual capacity performance based on indoor unit type and number of indoor units connected, please refer to MXZ Operational Performance. Although the maximum connectable capacity is 130%, the outdoor unit cannot provide more than 100% of the rated capacity. Please utilize this over capacity capability for load shedding or applications where it is known that all connected units will NOT be operating at the same time.

## OUTDOOR UNIT ACCESSORIES: MXZ-3C30NA3

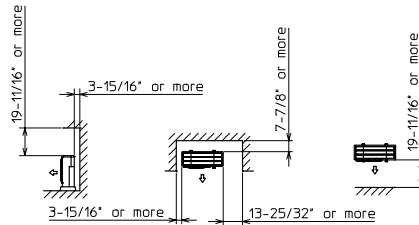
Air Outlet Guide	Air Outlet Guide (1 Piece)	PAC-SH96SG-E
Ball Valve	Refrigeration Ball Valve - 1/2"	BV12FFS12
	Refrigeration Ball Valve - 1/4"	BV14FFS12
	Refrigeration Ball Valve - 3/8"	BV38FFS12
	Refrigeration Ball Valve - 5/8"	BV58FFS12
Control Wire	M-Net Control Wire, 1,000' Roll (16-AWG, Standard, Twisted Pair, Shielded, Jacketed- Plenum rated)	CW162S-1000
	M-Net Control Wire, 250' Roll (16-AWG, Standard, Twisted Pair, Shielded, Jacketed- Plenum rated)	CW162S-250
Drain Socket	Drain Socket	PAC-SG60DS-E
Hail Guards	Hail Guard	HG-A9
M-NET Converter	M-NET Converter	PAC-IF01MNT-E
Mini-Split Wire	14 Gauge, 4 wire MiniSplit Cable—250 ft. roll	S144-250
	14 Gauge, 4 wire MiniSplit Cable—250 ft. roll	SW144-250
	14 Gauge, 4 wire MiniSplit Cable—50 ft. roll	S144-50
	14 Gauge, 4 wire MiniSplit Cable—50 ft. roll	SW144-50
	16 Gauge, 4 wire MiniSplit Cable—250 ft. roll	S164-250
	16 Gauge, 4 wire MiniSplit Cable—250 ft. roll	SW164-250
	16 Gauge, 4 wire MiniSplit Cable—50 ft. roll	S164-50
	16 Gauge, 4 wire MiniSplit Cable—50 ft. roll	SW164-50
Mounting Pad	Condensing Unit Mounting Pad: 16" x 36" x 3"	ULTRILITE1
	Outdoor Unit 3-1/4 inch Mounting Base (Pair) - Plastic	DSD-400P
Port Adapter	Adaptor: 1/2" x 3/8"	MAC-A455JP-E
	Adaptor: 1/2" x 5/8"	MAC-A456JP-E
	Adaptor: 3/8" x 1/2"	MAC-A454JP-E
	Adaptor: 3/8" x 5/8"	PAC-SG76RJ-E
Stand	18" Single Fan Stand	QSMS1801M
	24" Single Fan Stand	QSMS2401M
	Condenser Wall Bracket	QSWB2000M-1
	Condenser Wall Bracket - Stainless Steel Finish	QSWBSS
	Outdoor Unit Stand — 12" High	QSMS1201M

# OUTDOOR UNIT DIMENSIONS: MXZ-3C30NA3

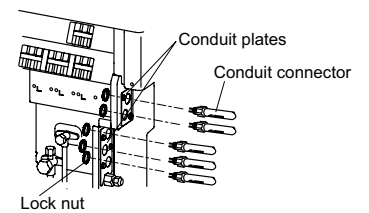
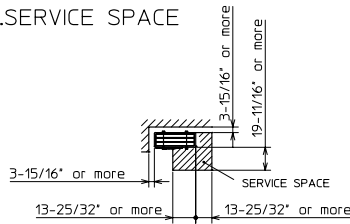
Unit: inch (mm)



## 1.FREE SPACE



## 2.SERVICE SPACE



1340 Satellite Boulevard Suwanee, GA 30024  
 Toll Free: 800-433-4822 www.mehvac.com

SUBMITTAL DATA: SEZ-KD15NA4\*\*

15,000 BTU/H HORIZONTAL-DUCTED INDOOR UNIT FOR MXZ MULTI-ZONE HEAT-PUMP SYSTEMS

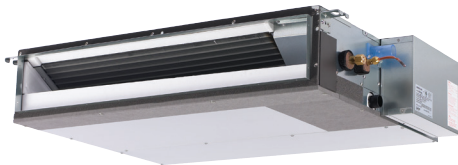
Job Name:

System Reference:

Date:

\*\*APPLIES TO INDOOR UNIT:

- SEZ-KD15NA4
□ SEZ-KD15NA4.TH
□ SEZ-KD15NAR1.TH
□ SEZ-KD15NA4R1.TH



Indoor Unit: SEZ-KD15NA4\*\*

GENERAL FEATURES

- Horizontal-ducted indoor unit for concealed applications
• Ultra thin body: 7-7/8" high
• Built-in drain mechanism for condensate removal; lifts to 21-11/16"
• Air filter is included with indoor unit
• Quiet operation — as low as 23 dBA
• Indoor unit powered from outdoor unit using A-Control
• AUTO fan speed control
• Automatic restart following a power outage
• Limited warranty: five years parts and seven years compressors

ACCESSORIES

Indoor Unit

- Filter Box with MERV 8 Filters (FBL1-2)
□ Bottom Return Plate (BRP-2)

Controller Options

- Wireless Wall-mounted Remote Controller Kit (MHK1)\*
□ Portable Central Controller (MCCH1)\*
□ Outdoor Air Sensor (MOS1)\*
□ Wired Wall-mounted Controller (PAR-31MAA)\*
□ Simple MA Remote Controller (PAC-YT53CRAU)\*

\*See Submittal for information on each option.

- Remote Temperature Sensor (M21-JKO-307)
□ Hand-held Wireless Remote Controller (PAR-FL32MA; req. PAR-FA32MA-E)
□ Wireless Signal Receiver PAR-FA32MA (for PAR-FL32MA)
□ Lockdown Bracket for Hand-held Controller (RCMKP1CB)

SPECIFICATIONS

Cooling Capacity\* . . . . .14,100 Btu/h
Heating Capacity at 47°F\* . . . . .18,000 Btu/h

\* Rating Conditions per AHRI Standard

Cooling | Indoor: 80° F (27° C) DB / 67° F (19° C) WB
Cooling | Outdoor: 95° F (35° C) DB / 75° F (24° C) WB
Heating at 47°F | Indoor: 70° F (21° C) DB / 60° F (16° C) WB
Heating at 47°F | Outdoor: 47° F (8° C) DB / 43° F (6° C) WB

(For data on specific indoor units [all ducted, all non-ducted, and both ducted and non-ducted] combinations, see the MXZ Technical and Service Manual.)

Electrical Requirements

Power Supply . . . . . 208 / 230V, 1-Phase, 60 Hz
MCA . . . . . 1 A

Voltage

Indoor - Outdoor S1-S2 . . . . . AC 208 / 230V
Indoor - Outdoor S2-S3 . . . . . DC ±24V

Blower Motor (ECM) . . . . . 0.74 F.L.A.

Airflow (Lo - Med - Hi)

Cooling . . . . . 353 - 441 - 529 Dry CFM
317 - 396 - 476 Wet CFM
Heating . . . . . 353 - 441 - 529 CFM

Sound Pressure Level (Lo - Med - Hi)

Cooling . . . . . 30 - 34 - 37 dB(A)
Heating . . . . . 30 - 34 - 37 dB(A)

Table with 2 columns: DIMENSIONS and UNIT INCHES / MM. Rows include W (39 / 990), D (27-9/16 / 700), and H (7-7/8 / 200).

Weight . . . . . 54 lbs. / 24 kg
External Finish . . . . . Galvanized-steel Sheets
Field Drainpipe Size O.D. . . . . 1-1/4" / 32 mm

Refrigerant Type . . . . . R410A
Refrigerant Pipe Size O.D.
Gas Side . . . . . 1/2" / 12.7 mm
Liquid Side . . . . . 1/4" / 6.35 mm
Connection Method . . . . . Flared

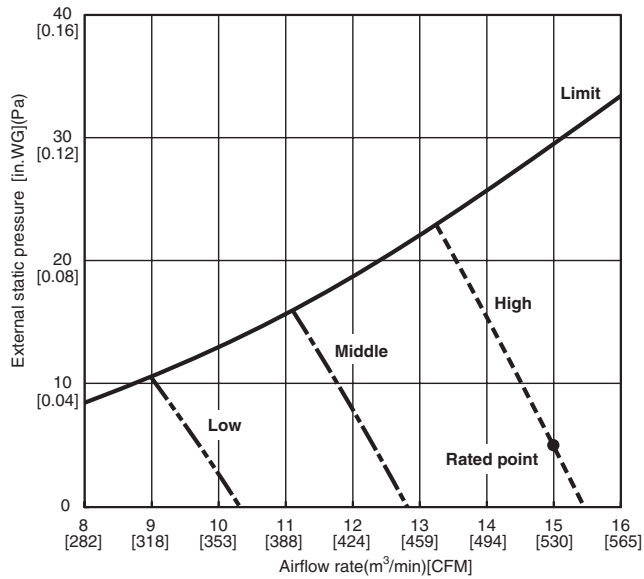




# SEZ-KD15NA4\*\* INDOOR FAN PERFORMANCE AND CORRECTED AIR FLOW CHARTS

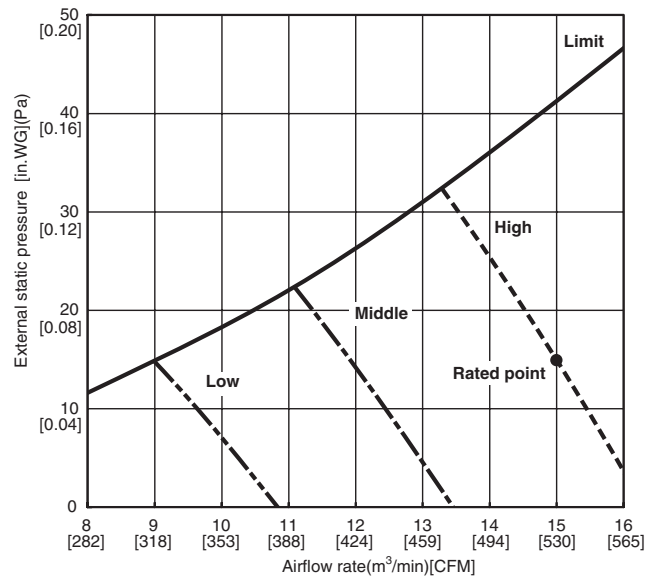
## SEZ-KD15NA4

(External static pressure 0.02[in.WG](5Pa)) 208/230V 60Hz



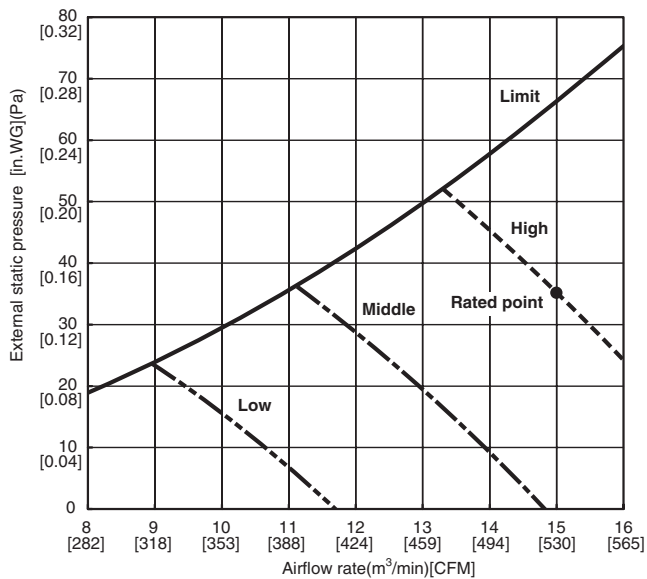
## SEZ-KD15NA4

(External static pressure 0.06[in.WG](15Pa)) 208/230V 60Hz



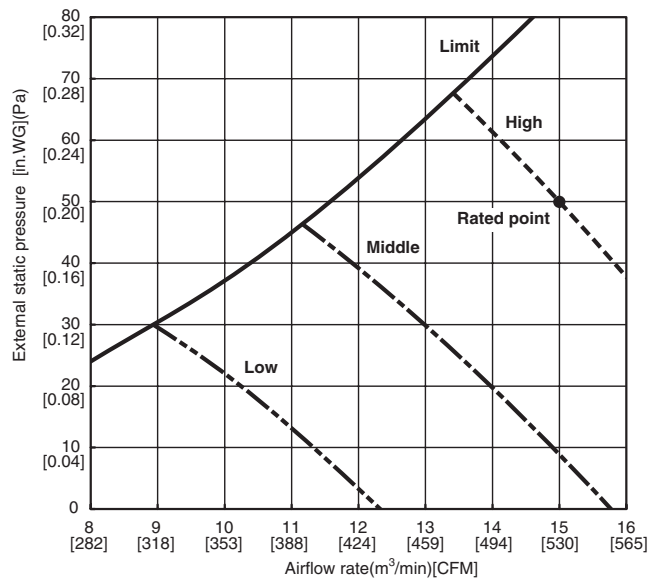
## SEZ-KD15NA4

(External static pressure 0.14[in.WG](35Pa)) 208/230V 60Hz



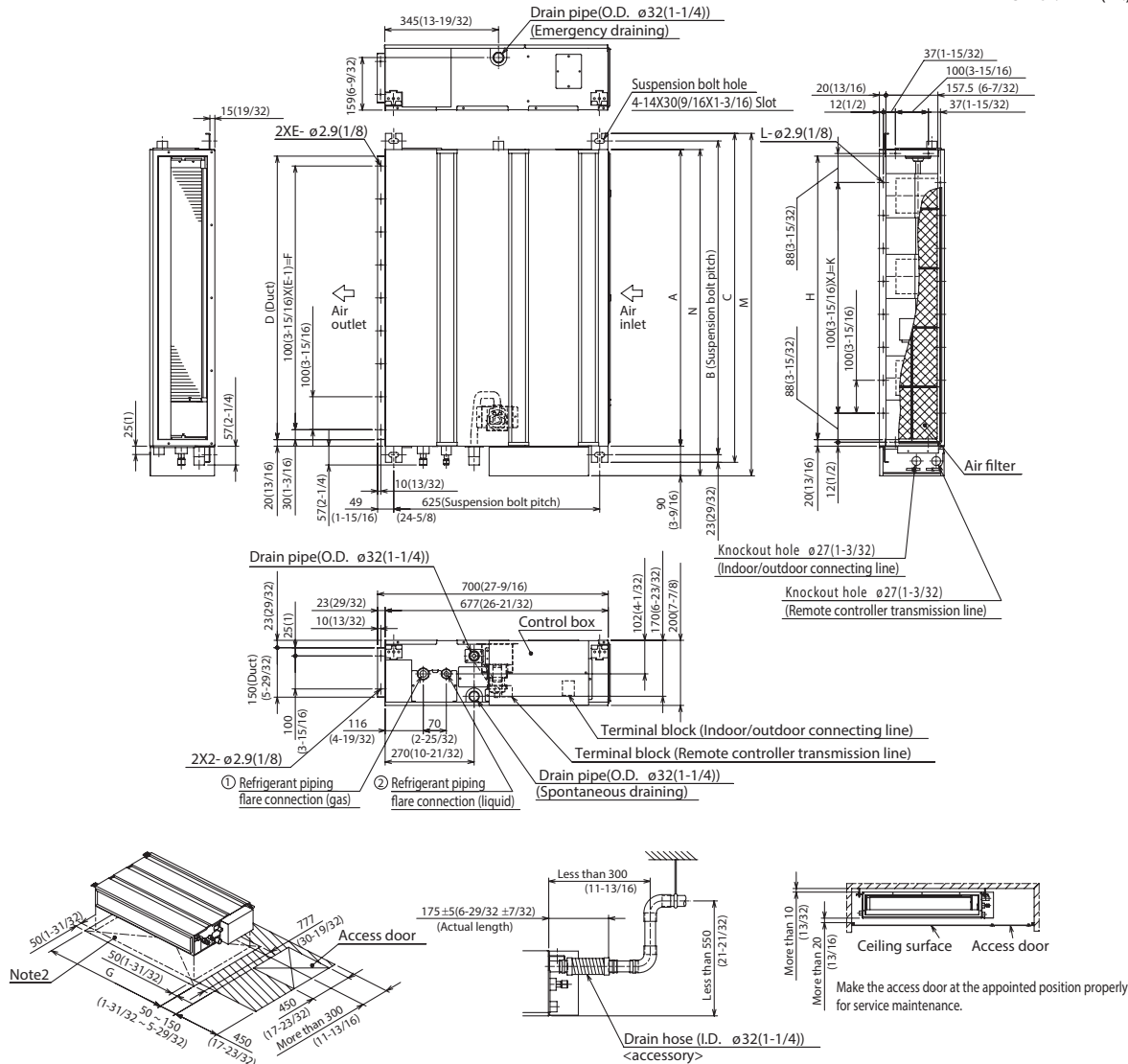
## SEZ-KD15NA4

(External static pressure 0.20[in.WG](50Pa)) 208/230V 60Hz



# DIMENSIONS: SEZ-KD15NA4\*\*

Unit : mm(in.)



Required space for service and maintenance

Model	mm(in.)														mm(in.)	
	A	B	C	D	E	F	G	H	J	K	L	M	N	① Gas pipe	② Liquid pipe	
SEZ-KD09NA4**	700 (27-9/16)	752 (29-5/8)	798 (31-7/16)	660 (26)	7	600 (23-5/8)	800 (31-1/2)	660 (26)	5	500 (19-11/16)	16	839 (33-1/16)	790 (31-1/8)	$\phi 9.52(3/8)$	$\phi 6.35(1/4)$	
SEZ-KD12NA4**	900 (35-7/16)	952 (37-1/2)	998 (39-5/16)	860 (33-7/8)	9	800 (31-1/2)	1000 (39-3/8)	860 (33-7/8)	7	700 (27-9/16)	20	1039 (40-29/32)	990 (39)	$\phi 9.52(3/8)$	$\phi 6.35(1/4)$	
SEZ-KD15NA4**	1100 (43-5/16)	1152 (45-3/8)	1198 (47-3/16)	1060 (41-3/4)	11	1000 (39-3/8)	1200 (47-1/4)	1060 (41-3/4)	9	900 (35-7/16)	24	1239 (48-25/32)	1190 (46-7/8)	$\phi 12.7(1/2)$	$\phi 6.35(1/4)$	

- Note1. Use M10 screw for the suspension bolt (field supply).  
 Note2. Keep the service space for the maintenance at the bottom.  
 Note3. This chart indicates for SEZ-KD15NA4\*\* model, which has 3 fans.  
 SEZ-KD09, 12NA4\*\* models have 2 fans.  
 SEZ-KD18NA4\*\* models have 4 fans.  
 Note4. In case an inlet duct is used, remove the air filter (supply with the unit), then install the filter (field supply) at suction side.



COOLING & HEATING

1340 Satellite Boulevard  
 Suwanee, GA 30024  
 Toll Free: 800-433-4822  
 www.mehvac.com

## SUBMITTAL DATA: SEZ-KD18NA4\*\*

18,000 BTU/H HORIZONTAL-DUCTED INDOOR UNIT FOR MXZ MULTI-ZONE HEAT-PUMP SYSTEMS

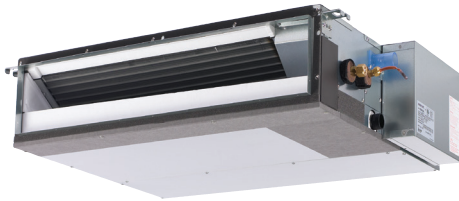
Job Name:

System Reference:

Date:

**\*\*APPLIES TO INDOOR UNIT:**

- SEZ-KD18NA4
- SEZ-KD18NA4.TH
- SEZ-KD18NAR1.TH
- SEZ-KD18NA4R1.TH



Indoor Unit: SEZ-KD18NA4\*\*

**GENERAL FEATURES**

- Horizontal-ducted indoor unit for concealed applications
- Ultra thin body: 7-7/8" high
- Built-in drain mechanism for condensate removal; lifts to 21-11/16"
- Air filter is included with indoor unit
- Quiet operation — as low as 23 dBA
- Indoor unit powered from outdoor unit using A-Control
- AUTO fan speed control
- Automatic restart following a power outage
- Limited warranty: five years parts and seven years compressors

**ACCESSORIES**

**Indoor Unit**

- Filter Box with MERV 8 Filters (FBL1-3)
- Bottom Return Plate (BRP-3)

**Outdoor Unit**

- Drain Socket (MAC-811DS)
- Drain Pan Heater (MAC-641BH-U)
- Three-pole Disconnect Switch (TAZ-MS303)
- Air Outlet Guide (MAC-856SG)
- Mounting Base (DSD-400N)
- Mounting Pad (ULTRILITE1)
- Wall-mounting Brackets (CWMB1)

**Controller Options**

- Wireless Wall-mounted Remote Controller Kit (MHK1)\*
- Portable Central Controller (MCCH1)\*
- Outdoor Air Sensor (MOS1)\*
- Wired Wall-mounted Controller (PAR-31MAA)\*
- Simple MA Remote Controller (PAC-YT53CRAU)\*
- \*See Submittal for information on each option.
- Remote Temperature Sensor (M21-JKO-307)
- Hand-held Wireless Remote Controller (PAR-FL32MA; eq.PAR-FA32MA-E)
- Wireless Signal Receiver Module PAR-FA32MA (for PAR-FL32MA)
- Lockdown Bracket for Hand-held Controller (RCMKP1CB)

**SPECIFICATIONS**

Cooling Capacity\* . . . . .17,200 Btu/h  
Heating Capacity at 47°F\* . . . . .21,600 Btu/h

**\* Rating Conditions per AHRI Standard**

Cooling | Indoor: 80° F (27° C) DB / 67° F (19° C) WB  
Cooling | Outdoor: 95° F (35° C) DB / 75° F (24° C) WB  
Heating at 47°F | Indoor: 70° F (21° C) DB / 60° F (16° C) WB  
Heating at 47°F | Outdoor: 47° F (8° C) DB / 43° F (6° C) WB

**(For data on specific indoor units [all ducted, all non-ducted, and both ducted and non-ducted] combinations, see the MXZ Technical and Service Manual.)**

**Electrical Requirements**

Power Supply . . . . . 208 / 230V, 1-Phase, 60 Hz  
MCA . . . . . 1 A

**Voltage**

Indoor - Outdoor S1-S2 . . . . .AC 208 / 230V  
Indoor - Outdoor S2-S3 . . . . . DC ±24V

Blower Motor (ECM) . . . . . 0.74 F.L.A.

**Airflow (Lo - Med - Hi)**

Cooling . . . . . 423 - 529 - 635 Dry CFM  
381 - 476 - 572 Wet CFM  
Heating . . . . . 423 - 529 - 635 Dry CFM

**Sound Pressure Level (Lo - Med - Hi)**

Cooling . . . . .30 - 34 - 38 dB(A)  
Heating . . . . .30 - 34 - 38 dB(A)

DIMENSIONS	UNIT INCHES / MM
W	46-7/8 / 1,190
D	27-9/16 / 700
H	7-7/8 / 200

Weight . . . . .62 lbs. / 28 kg  
External Finish . . . . . Galvanized-steel Sheets  
Field Drainpipe Size O.D. . . . .1-1/4" / 32 mm

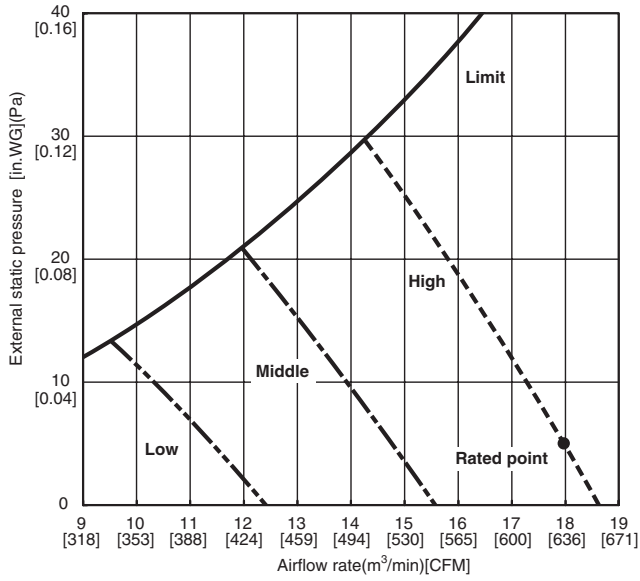
Refrigerant Type . . . . . R410A  
Refrigerant Pipe Size O.D.  
Gas Side . . . . . 1/2" / 12.7 mm  
Liquid Side . . . . . 1/4" / 6.35 mm  
Connection Method . . . . . Flared



# SEZ-KD18NA4\*\* INDOOR FAN PERFORMANCE AND CORRECTED AIR FLOW CHARTS

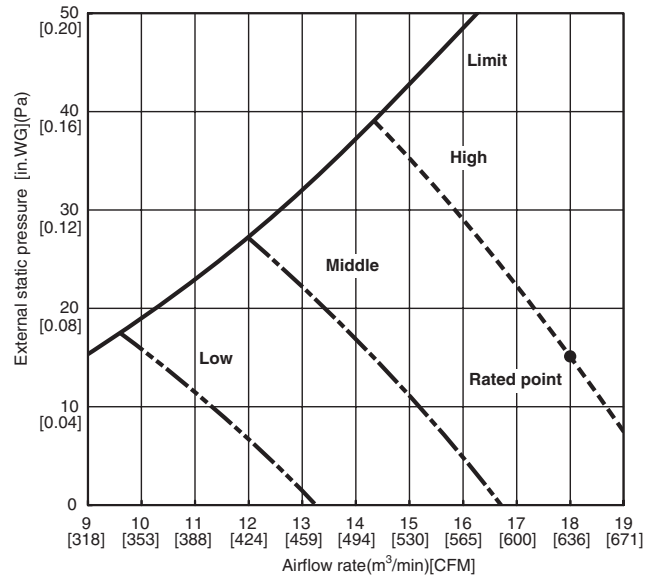
## SEZ-KD18NA4

(External static pressure 0.02[in.WG](5Pa)) 208/230V 60Hz



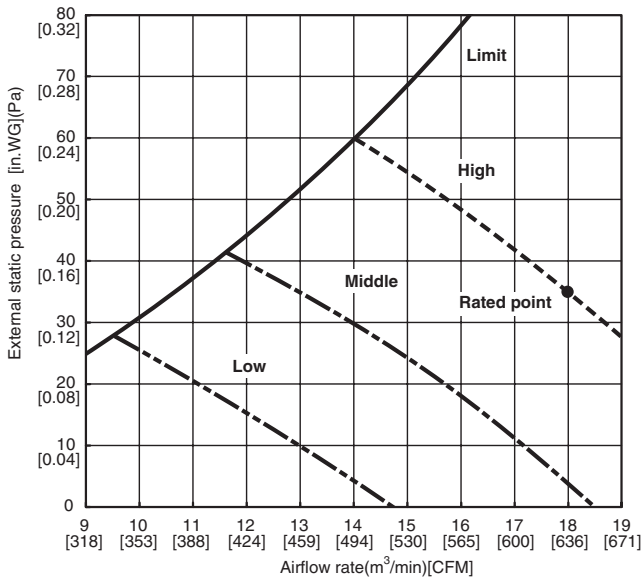
## SEZ-KD18NA4

(External static pressure 0.06[in.WG](15Pa)) 208/230V 60Hz



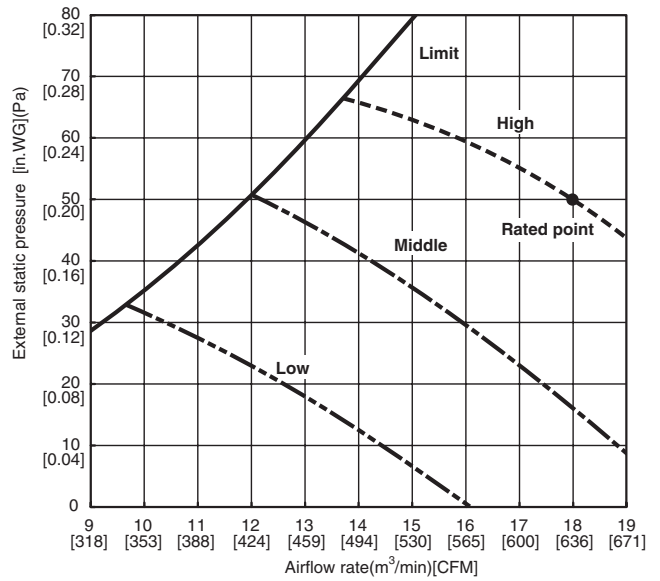
## SEZ-KD18NA4

(External static pressure 0.14[in.WG](35Pa)) 208/230V 60Hz



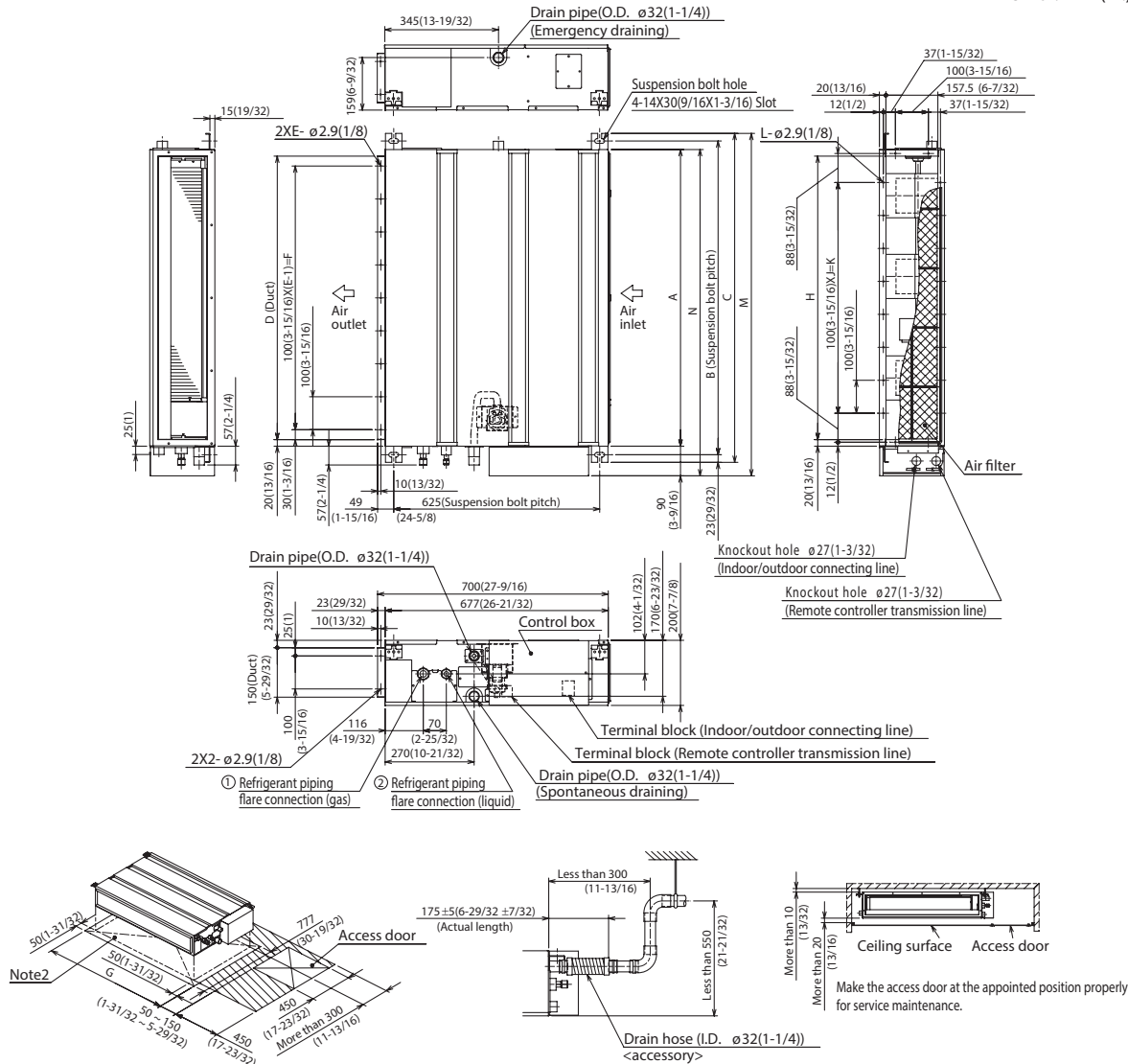
## SEZ-KD18NA4

(External static pressure 0.20[in.WG](50Pa)) 208/230V 60Hz



# DIMENSIONS: SEZ-KD18NA4\*\*

Unit : mm(in.)



Required space for service and maintenance

Model	mm(in.)														① Gas pipe	② Liquid pipe
	A	B	C	D	E	F	G	H	J	K	L	M	N			
SEZ-KD09NA4**	700 (27-9/16)	752 (29-5/8)	798 (31-7/16)	660 (26)	7	600 (23-5/8)	800 (31-1/2)	660 (26)	5	500 (19-11/16)	16	839 (33-1/16)	790 (31-1/8)	ø9.52(3/8)	ø6.35(1/4)	
SEZ-KD12NA4**	900 (35-7/16)	952 (37-1/2)	998 (39-5/16)	860 (33-7/8)	9	800 (31-1/2)	1000 (39-3/8)	860 (33-7/8)	7	700 (27-9/16)	20	1039 (40-29/32)	990 (39)	ø12.7(1/2)		
SEZ-KD15NA4**	1100 (43-5/16)	1152 (45-3/8)	1198 (47-3/16)	1060 (41-3/4)	11	1000 (39-3/8)	1200 (47-1/4)	1060 (41-3/4)	9	900 (35-7/16)	24	1239 (48-25/32)	1190 (46-7/8)			
SEZ-KD18NA4**																

- Note1. Use M10 screw for the suspension bolt (field supply).  
 2. Keep the service space for the maintenance at the bottom.  
 3. This chart indicates for SEZ-KD15NA4\*\* model, which has 3 fans.  
 SEZ-KD09, 12NA4\*\* models have 2 fans.  
 SEZ-KD18NA4\*\* models have 4 fans.  
 4. In case an inlet duct is used, remove the air filter (supply with the unit), then install the filter (field supply) at suction side.



COOLING & HEATING

1340 Satellite Boulevard  
 Suwanee, GA 30024  
 Toll Free: 800-433-4822  
 www.mehvac.com