**MNO163620F****General Recommendations:**

Please read installation and maintenance instructions thoroughly.
Inspect your sink for any noticeable damage before installation.
Check all local applicable plumbing and building codes.

These instructions are based on application to composite material or solid surface countertop installation only; countertop application to stone, marble, granite or butcher-block should be referred to an experienced countertop fabricator for custom installation.

Because Miseno Farmhouse sinks are individually handmade, we suggest using experienced and professional installers only. For custom cutting of countertop and installation of the actual sink, on-site installation is also recommended. Acceptable variances are approximately 1/8 of an inch. Alignment to the cut-out and precise application and trimming of any adhesive sealant are critical to a superior fit and finished look. Please take extra care in this regard.

Miseno Farmhouse sinks require custom cabinetry. Consult a contractor or cabinet maker.

Miseno does not accept any liability for damage to countertop, sink fixture, faucets or personal injury during installation. Warranty is void if installation instructions are not followed.

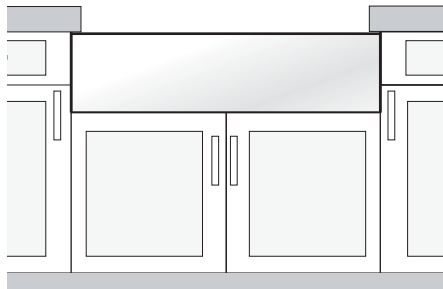
Tools and Materials needed:

| | | |
|------------------|-------------------|---------------------------|
| Tape Measure | Framing Square | Eye Protection |
| Hacksaw / Jigsaw | Ear Protection | Silicone Adhesive Sealant |
| Rags | Shims | Wood Braces |
| Pencil (NOT ink) | Denatured Alcohol | |

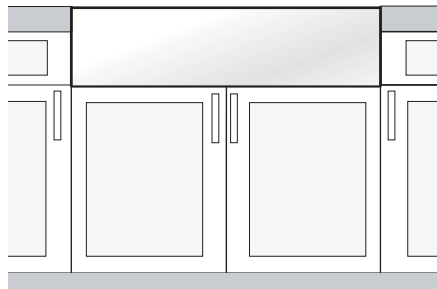
Be sure to use proper tools and always wear personal safety devices for your protection.

Installation Options:

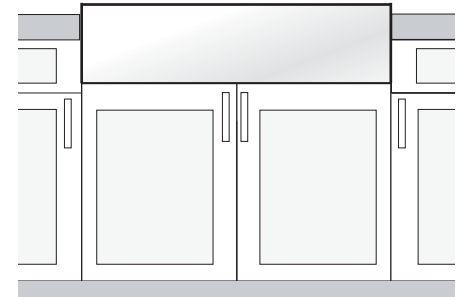
Miseno farmhouse sinks offer several installation options depending on your design.



Undermount Installation



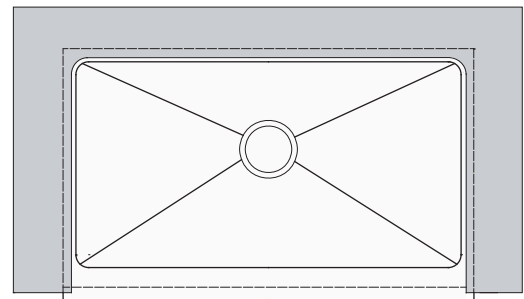
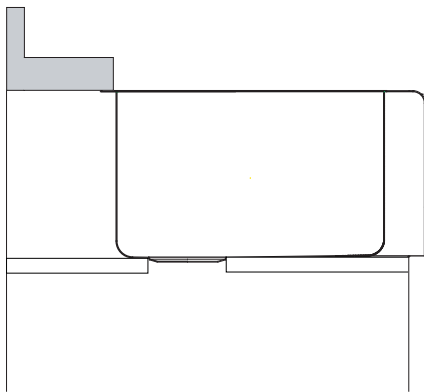
Flush mount Installation



Protruding Installation

- ⓘ Caution: All installation types need to allow room for your faucet. Be sure there is adequate clearance behind the sink for any faucet(s) and your backsplash, as well as clearance for a full range of motion for faucet spouts and handles.

Typical undermount installation with 1/4" reveal recommended.



Typical flush mount and protruding installation

Protruding installation exposes the sides of the sink up to 1" above the countertop.

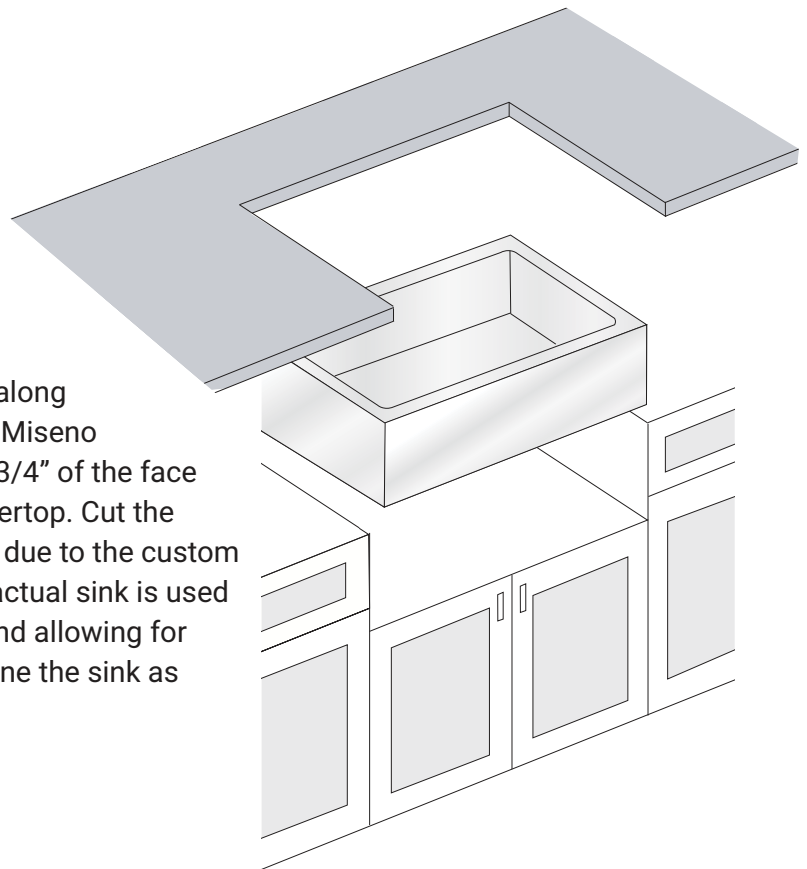
1. Prepare the Sink Base Cabinet:

Due to the variety of potential installation options, this guide is a general overview and not a plan.

Farmhouse sinks require custom cabinets with a front cutout to accommodate a 10" deep sink. Build a plywood platform on a support frame inside of the cabinet. Platform must be able to support the weight of the sink and any attachments such as garbage disposals. When the sink is placed onto a platform, make sure the top of the sink is evenly flush against the bottom of the countertop. Allow clearance for water supply line and drains or garbage disposal, as necessary.

2. Make a Template and Cutout

The installation option you choose will determine how you cut your countertop. Miseno recommends a 1/4" reveal on 3 sides when installed undermount style. For a flush mount or protruding installation, cut countertop along the outside line of the sink profile. The front of a Miseno Farmhouse sink is designed to be installed with 3/4" of the face extended out beyond the front edge of the countertop. Cut the countertop accordingly. No template is provided due to the custom nature of each application and installation. The actual sink is used as the template guide. After centering the sink and allowing for any faucets and backsplash, use a pencil to outline the sink as your guide for the cutout. Check your reveal on all sides before cutting.



3. Set the Sink

Set the sink on top of the cabinet or into the cabinet front cutout. Apply sealant as necessary as a gasket between the sink and cabinet, and to hold the sink in place.

4. Install the Countertop

For undermount installations, carefully clean bottom of countertop and top flange of sink with denatured alcohol. Apply bead of silicone adhesive (not supplied) around the top edge of the sink. Place countertop onto the sink. Remove excess sealant from the lip or any surfaces with a cleaner recommended by the sealant manufacturer. For flushmount or protruding installations apply a bead of silicone in the seam between the countertop and sink. Wipe off any excess and allow to cure for 24 hours before use.