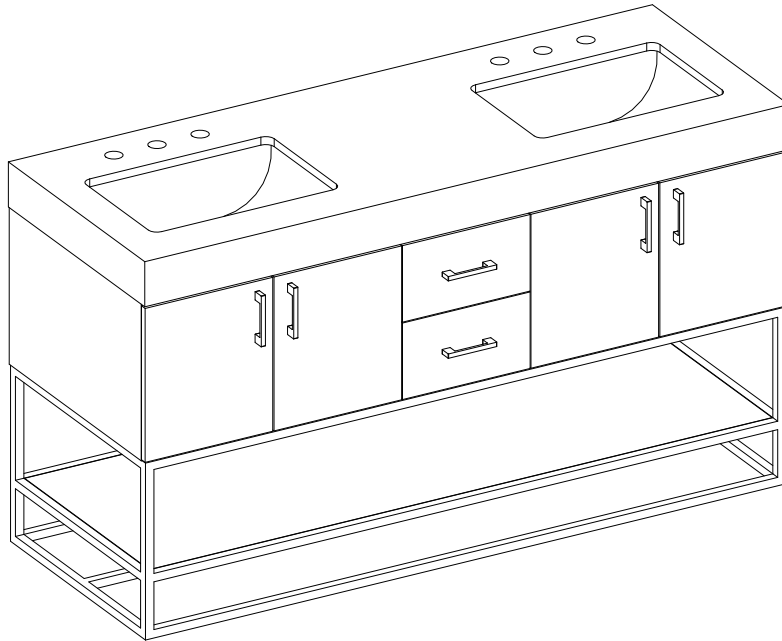


## 60" DOUBLE VANITY

N521-V60D-WMO

N521-V60D-WLD

---



### Features and Materials

Solids: Yellow Poplar

Veneers: (WMO,WLD) Engineered Oak

Panels: MDF + Plywood

Number of Doors: Four

Number of Drawers: Two

European Soft Close Hinges

Full Extension, Soft Close Slides

USB/Power Component: Yes, (ETL5011080)

Installation: Freestanding

Assembly Required: Attach the top with sink to the cabinet

Hardware Material and Finish: Zinc Alloy

(WMO)(WLD), Champagne Brass

Adjustable levelers

Sink Top Included: Yes

Sink Top Material: Glossy White Composite

Number of Basins: Two

Faucet: 8" Widespread, not included

Basin Overflow: Yes, facing front

Fits Drain Hole Size: 1-3/8"

### Overall Dimensions

Width:60"

Depth:22"

Height:33-3/4"

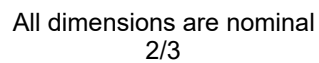


ASME A112.19.2-2018/CSA B45.1-18

SINK MODEL: SNK-V1

CUPC FILE NO: 13093

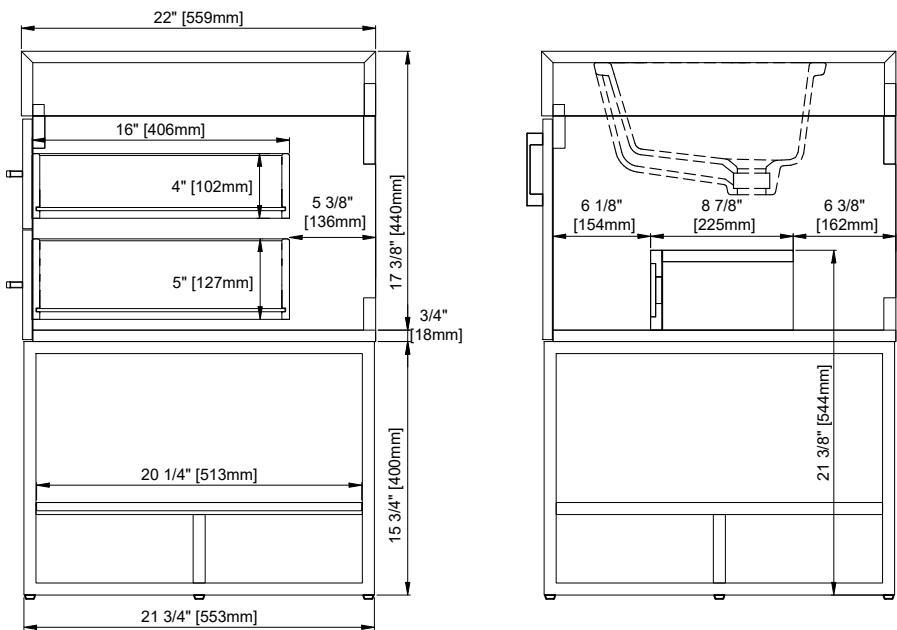
N521-V60D-WMO  
N521-V60D-WLD



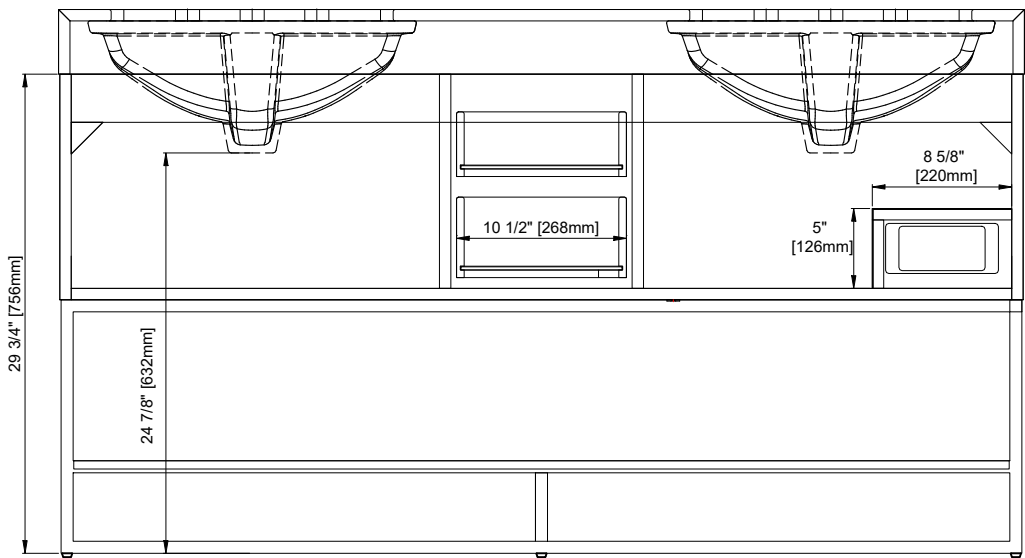
Version: 202506

# 60" DOUBLE VANITY

N521-V60D-WMO  
N521-V60D-WLD



Side View



Back View

All dimensions are nominal  
3/3

Version: 202506