

30" MERTOLA VANITY

PRODUCT SPECIFICATIONS

Height: 38-1/2" - includes 4" backsplash

Depth: 19"

Width: 30"

Solids: Yellow Poplar

Veneers: (WLD, MPW) Engineered Oak

Panels: MDF + Plywood

Number of Doors: Two

USB/Power Component: Yes
(ETL5011080)

Cord Length: 6'6"

Installation Type: Floor Standing

Assembly Required: Attach the top
with sink to the cabinet

Hardware Features: European Soft Close
Hinges, Adjustable Levers

Hardware Material: Zinc Alloy (WLD,
MPW) Champagne Brass

Sink Top Included: Yes

Sink Top Material: Smooth White
Composite

Number of Basins: One

Faucet: 8" Widespread - not included

Basin Overflow: Yes - facing front

Fits Drain Hole Size: 1-3/8"

AVAILABLE FINISHES



WALNUT DRIFT
MN252V30WLD



CHAMPAGNE
BRASS

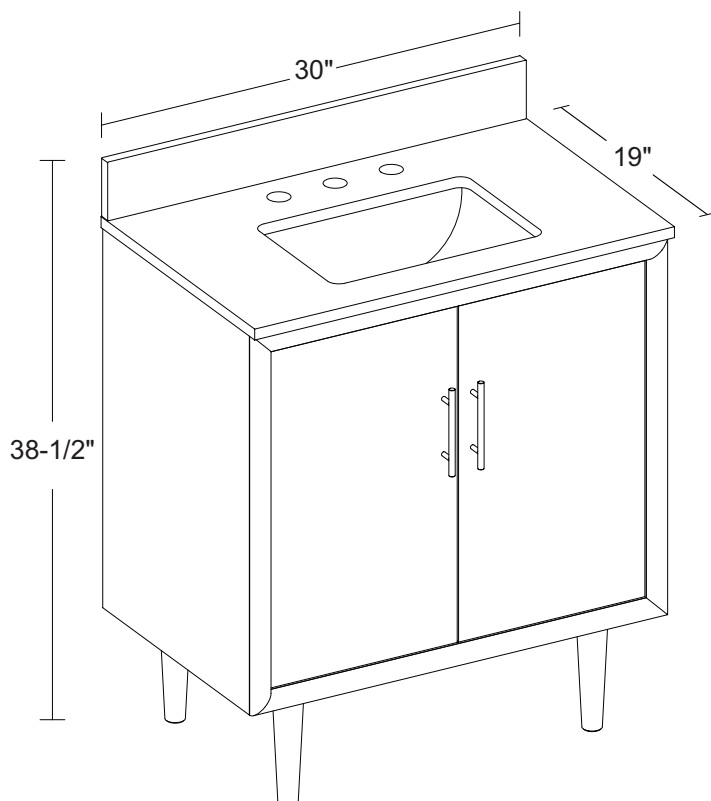


DARK MAPLEWOOD
MN252V30MPW



CHAMPAGNE
BRASS

PRODUCT DIMENSIONS



ASME A112.19.2-2018/CSA B45.1-18

SINK MODEL: F2014B

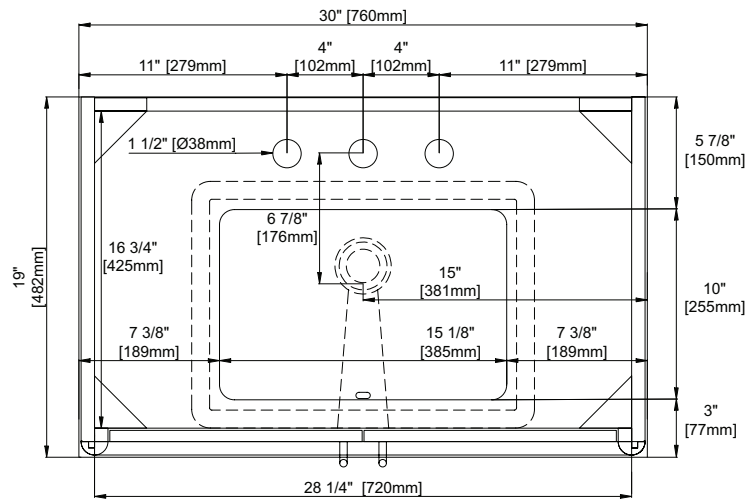
CUPC FILE NO: 14592

All dimensions are nominal

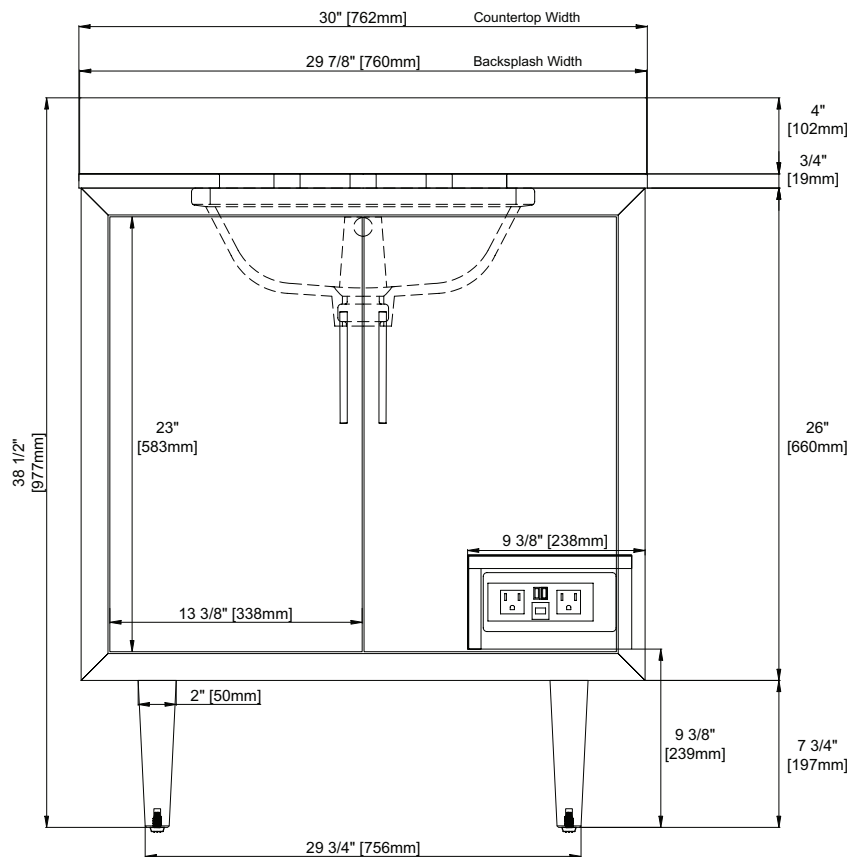
1 / 3

30" MERTOLA VANITY

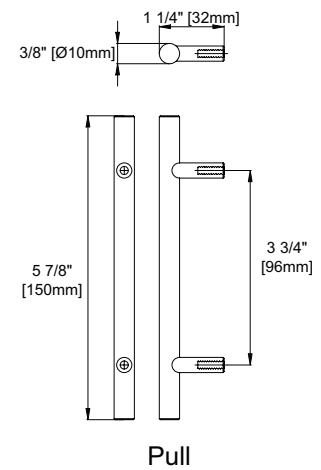
PRODUCT DIMENSIONS



Top View



Front View



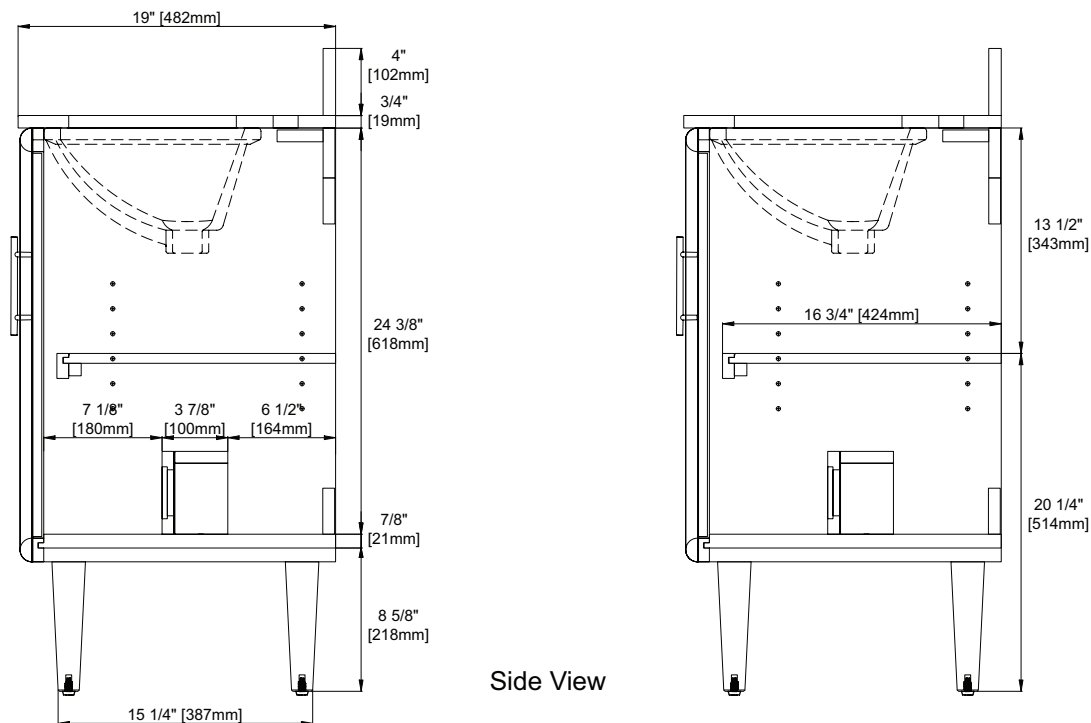
Pull

All dimensions are nominal

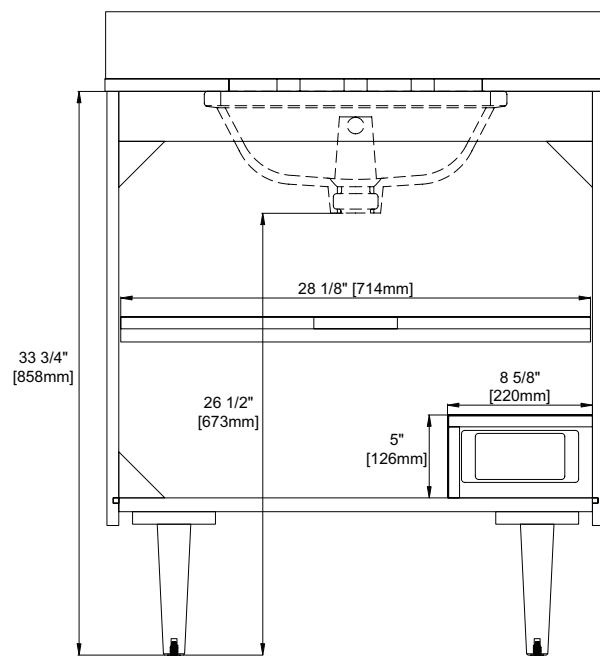
2 / 3

30" MERTOLA VANITY

PRODUCT DIMENSIONS



Side View



Back View

All dimensions are nominal