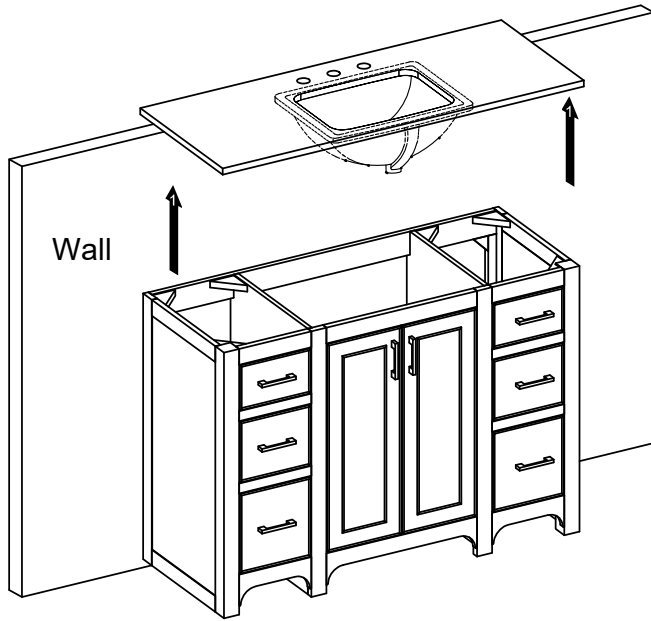


Ravello Vanity: N241-V48-BW N241-V48-DPO N241-V48-SBL N241-48-MPW Assembly/Installation Instructions

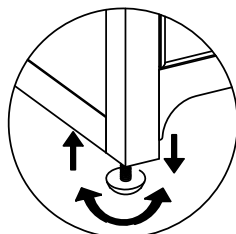
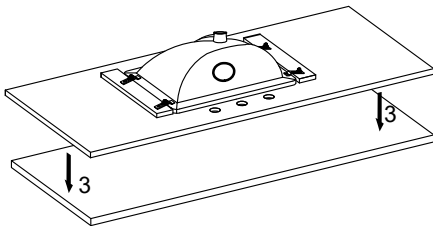
Step 1 Notes: PROPER HANDLING OF COUNTERTOP TOP

Please remove the top from the vanity .

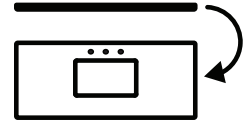
Carefully lift the top vertically with two people



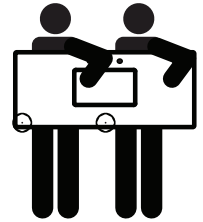
Step 2: Place the top and backsplash face down onto a scratch-free surface such as a foam sheet that came in the packaging.



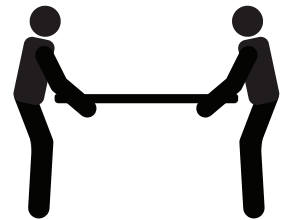
Rotate the countertop and sink from flat position and lift top vertically.



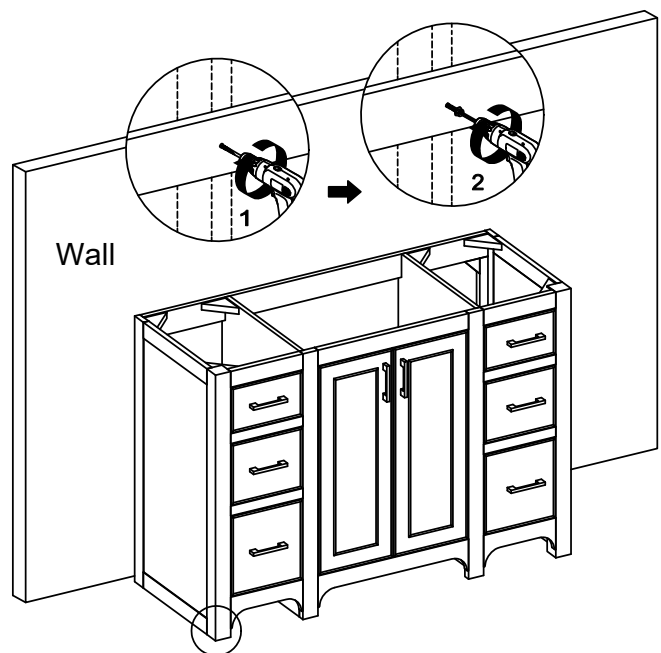
Lift top vertically with two people.



NEVER LIFT OR CARRY THE VANITY TOP FLAT.

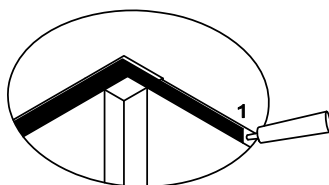


Step 3 Notes: Once the vanity is in place, against the wall, and level from front to back and side to side drill a hole through the vanity mounting area and into the wall studs (as illustrated in diagram). Using appropriate mounting hardware (not included), secure the vanity to a wall stud. If possible, secure the vanity to two wall studs for increased stability.

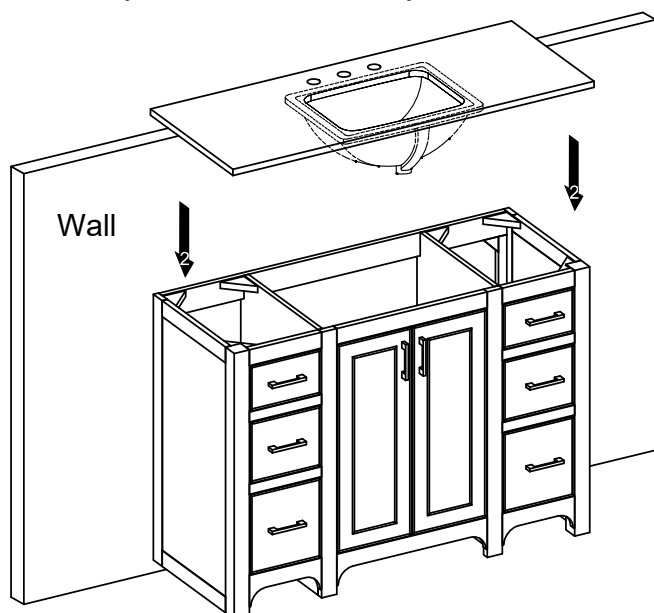


Ravello Vanity: N241-V48-BW N241-V48-DPO N241-V48-SBL N241-48-MPW Assembly/Installation Instructions

Step 4 Notes: Apply stain free silicone caulk (not included) to the top edge of vanity.



Step 5 Notes: Carefully lift the top vertically with two people and gently lower the vanity top onto the cabinet base and set it in place. Wipe away any excess caulk with a soft cloth, and wait approximately 24 hours for it to dry.



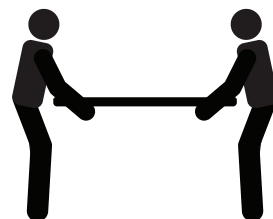
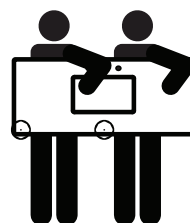
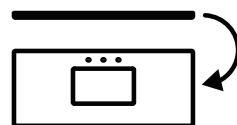
Rotate the countertop and sink from flat position and lift top vertically.



Lift top vertically with two people.



NEVER LIFT OR CARRY THE VANITY TOP FLAT.



Step 6 Notes: Apply silicone caulk (not included) to unpolished side and bottom of backsplash. Position backsplash on top and against wall. Clean any excess caulk before allowing to dry.

