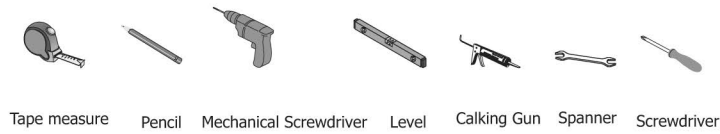


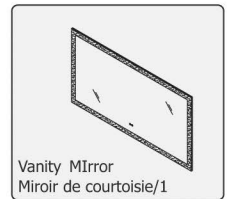
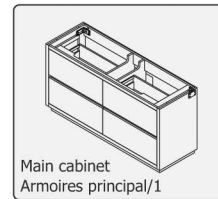
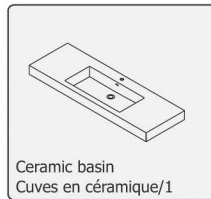
INSTALLING VANITY WITH TWO PEOPLE IS HIGHLY RECOMMENDED
L'INSTALLATION DE LA VANITÉ AVEC DEUX PERSONNES EST FORTEMENT RECOMMANDÉE

Recommended Tools/Outils recommandés

Main Body Parts/La partie principale du corps



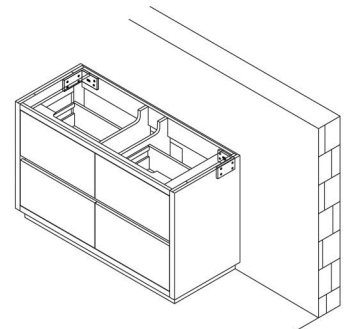
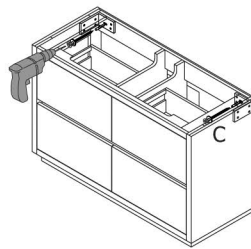
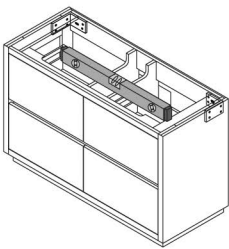
C 6x80 Outer hexagonal self-tapping screws/
 6x80 Vis auto-taradeuses hexagonal externe 2 pcs



STEP #1

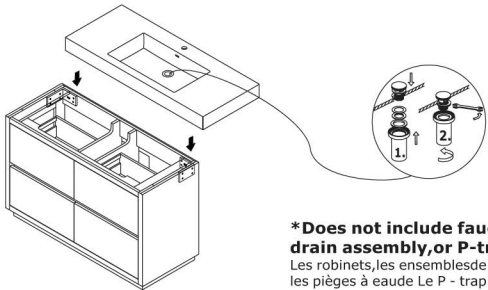
Assembly instructions/Instructions de montage

Mounting cabinet/Installation du cabinet



STEP #2

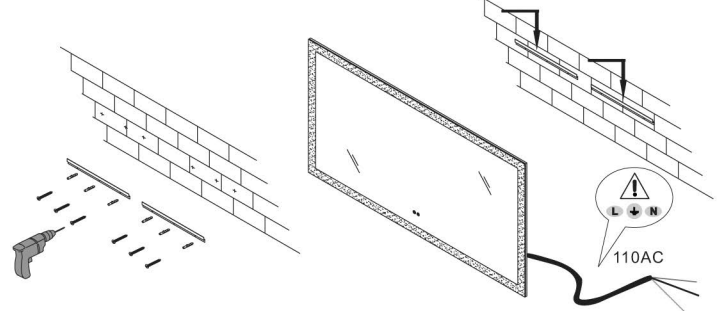
Paste the countertop/Coller le comptoir



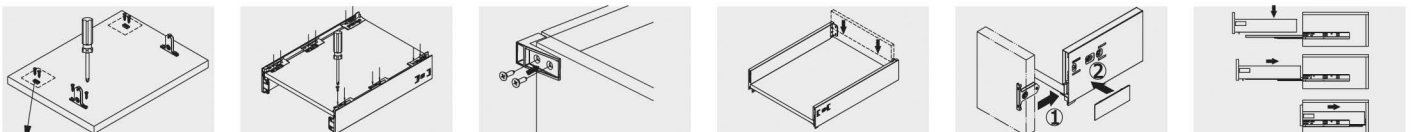
***Does not include faucet, drain assembly, or P-trap/**
 Les robinets, les ensembles de drains ou les pièges à eau Le P - trap sont pas inclus.

STEP #3

Hang the mirror/Accrocher le miroir



Installation Instruction/Instructions d'installation



These two connectors are needed only for heightening the rod
 Les deux connecteurs ne sont utilisés que pour augmenter la hauteur de la tige

The drawer is adjusted/Le tiroir est réglé



Standard screwdriver shaft diameter: 0.24" /
 Diamètre de l'axe du vis standard: 0,24"

Heightening rod installation, adjustment and removal/
 Installation, réglage et retrait de la tige de surélévation



Installation and adjustment/mise en place et réglage

disassemble/démonter

•Please check your product packaging to make sure the included accessories etc.
 Veuillez vérifier l'emballage de votre produit pour vous assurer que les accessoires inclus

