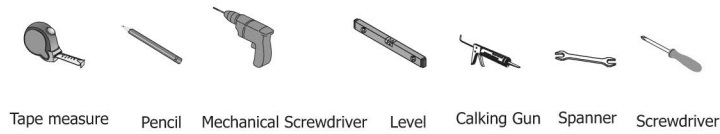


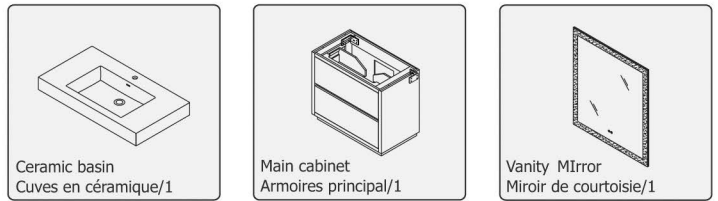
INSTALLING VANITY WITH TWO PEOPLE IS HIGHLY RECOMMENDED
L'INSTALLATION DE LA VANITÉ AVEC DEUX PERSONNES EST FORTEMENT RECOMMANDÉE

Recommended Tools/Outils recommandés

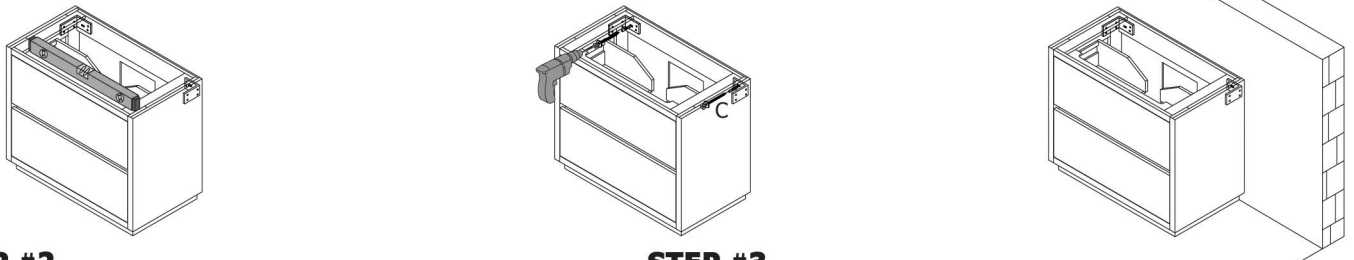
Main Body Parts/La partie principale du corps



C 6x80 Outer hexagonal self-tapping screws/
 6x80 Vis auto-taradeuses hexagonal externe 2 pcs

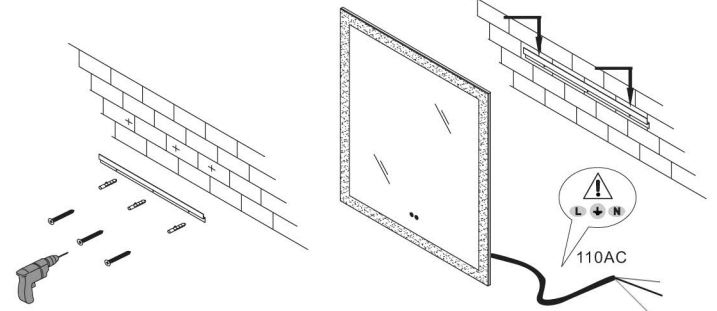
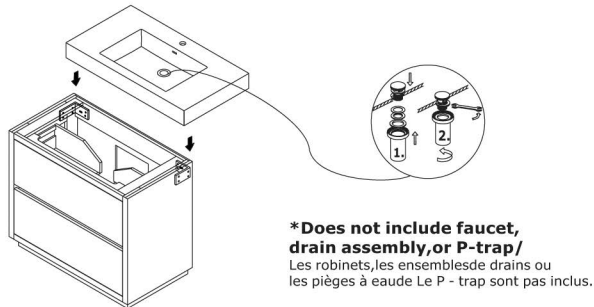


STEP #1
Mounting cabinet/Installation du cabinet

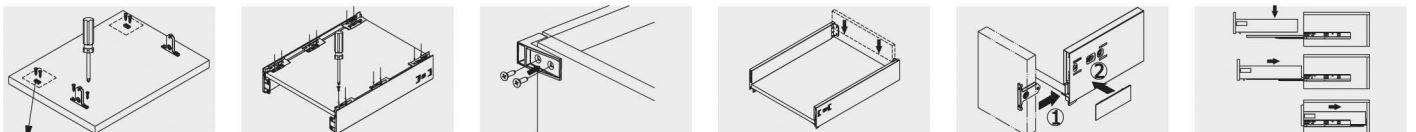


STEP #2
Paste the countertop/Coller le comptoir

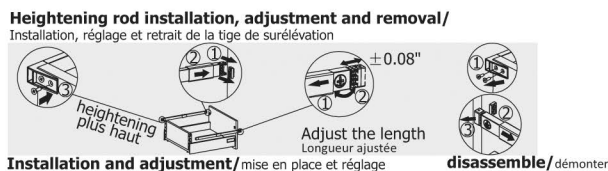
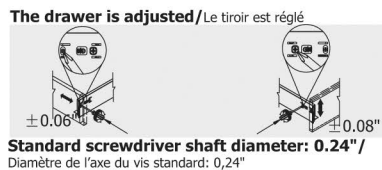
STEP #3
Hang the mirror/Accrocher le miroir



Installation Instruction/Instructions d'installation



These two connectors are needed only for heightening the rod
 Les deux connecteurs ne sont utilisés que pour augmenter la hauteur de la tige



•Please check your product packaging to make sure the included accessories etc.
 Veuillez vérifier l'emballage de votre produit pour vous assurer que les accessoires inclus

