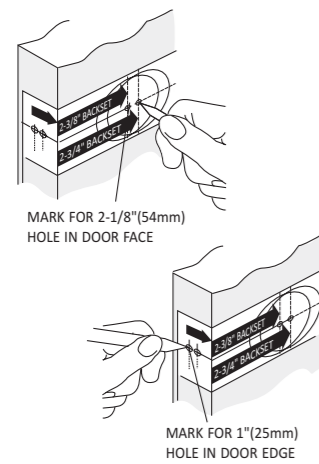


Door Lock Instructions New Door Preparation

JSC-FGS-808

Step 1 : Mark Door



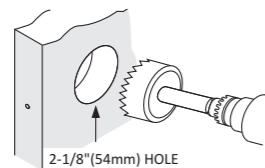
Fold Template below on Fold Line and Mark Door for Lock Bore Hole at 2-3/4" or 2-3/8" Backset and lock Edge Hole Centered on the door edge.

Note: Most exterior doors 2-3/4" Backset is used

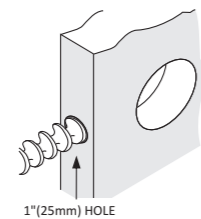
Common Standard for Lock Height off Floor is 36" above the floor. Deadbolt should be 5.5" above the entrance Knob or lever

Step 2 : Drill Holes

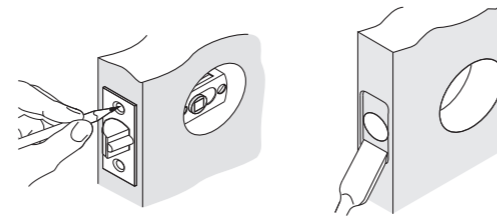
A) Drill through Door Face with 2-1/8" hole saw. Drill one side until Guide Bit punches through then Drill from through with the Hole saw from the other side to Complete the Lock Bore Hole



B) Drill the 1" Latch Hole from the door edge fully into the Lock Bore hole



Step 3 : Mortise Door for Latch

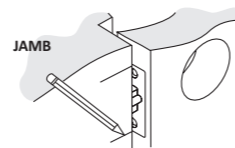


A) Insert Latch into Hole and keeping it parallel to the door Edge mark the Outline

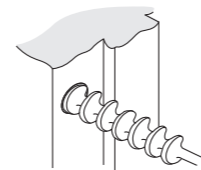
B) Mortise the Door edge with a Chisel or Router 1/8" deep or until the latch Face plate is flush with the door when installed

Step 4 : Prepare Jamb for Strike

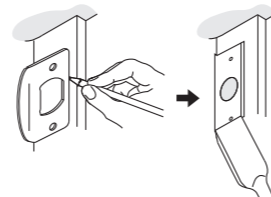
A) Insert Latch into hole in door and Mark where it will hit the door Jamb when properly closed.



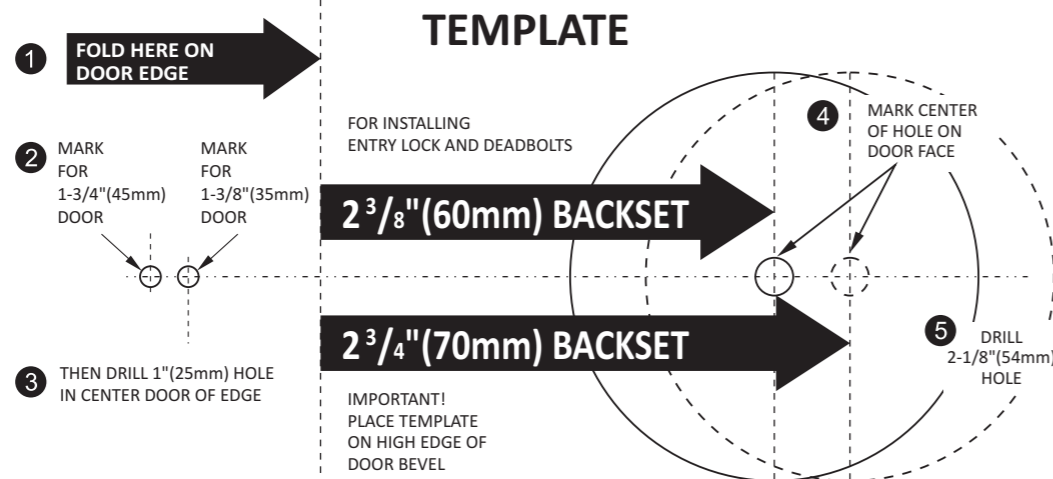
B) Drill a 1" hole a Minimum of 1" deep into the door Jamb at the position Marked



C) If the Door is a tight fit to the Jamb you may need to mark the strike and mortise the Jamb so the strike sits flush to the door



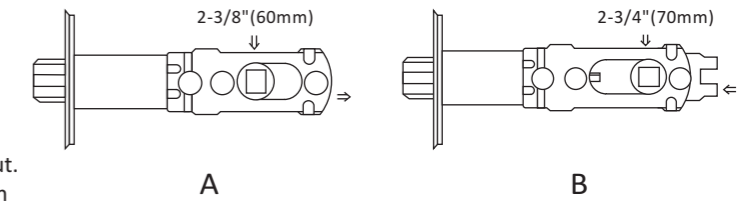
D) Outline outside edges of strike Chisel 1/16" deep for strike.



Door Lock Installation

JSC-FGS-808

Step 1 : Adjust Latch Backset

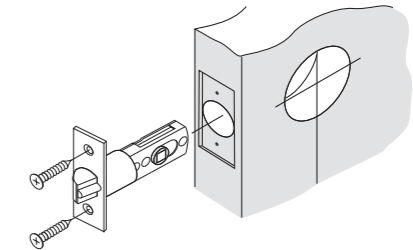


Adjust the Backset to match your door:

- A) To Adjust to 2-3/4" Backset pull square latch cam out.
- B) To Adjust to 2-3/8" Backset push square latch cam in

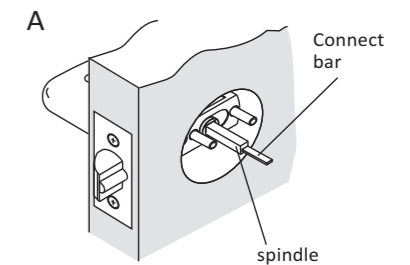
Step 2 : Install Latch into the door

Install Latch into door positioned so that wedged shaped side of Bolt engages the strike first when closing the door

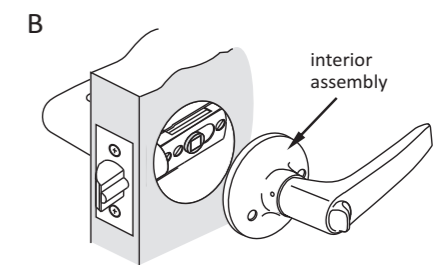


Step 3 : Install Lock body

A) Install exterior of lock by Inserting Lock Spindle Through Square Latch Cam and Studs through round holes until lock is Flush with the door.



B) Install the interior of the lock by inserting it over the spindle and pressing Flush to the door. Insert screws through holes and tighten down with a hand-held screwdriver.

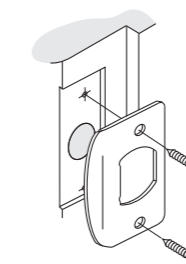


Note: It may be necessary to twist lock knob on interior assembly of lock to align with connector bar.

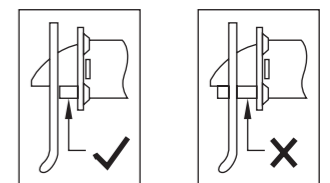
Note: Check alignment of the lock as you tighten the screws to keep lock centered over the bore Hole

Step 4 : Install Strike

Install Strike and test from inside. Adjust Strike position if necessary, for firm Closure.



Entry Lock only – Ensure Security Pin Seats Properly

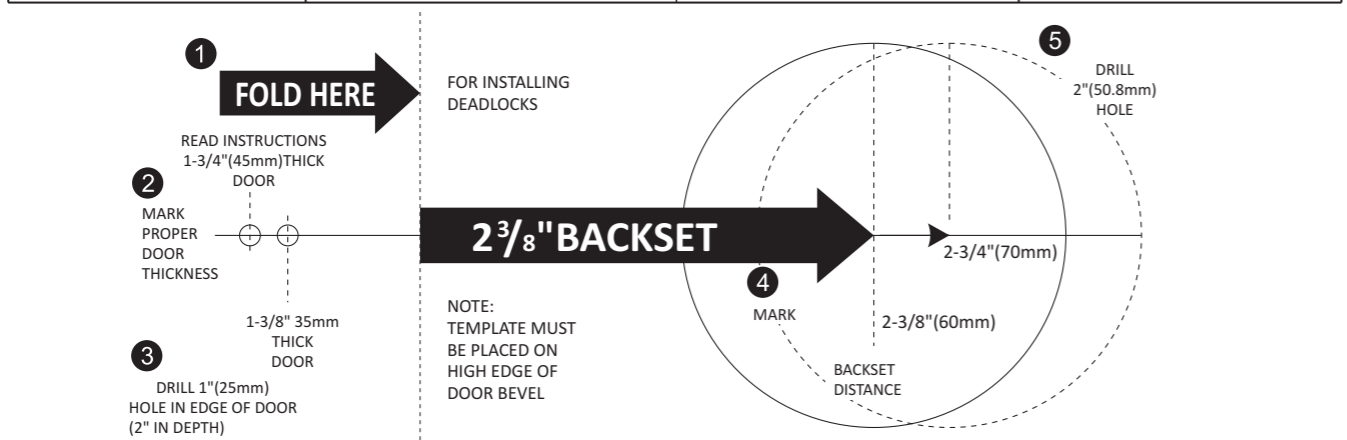


INSTRUCTIONS FOR INSTALLATION OF SINGLE AND DOUBLE CYLINDER DEADLOCKS

JSC-FGS-D101

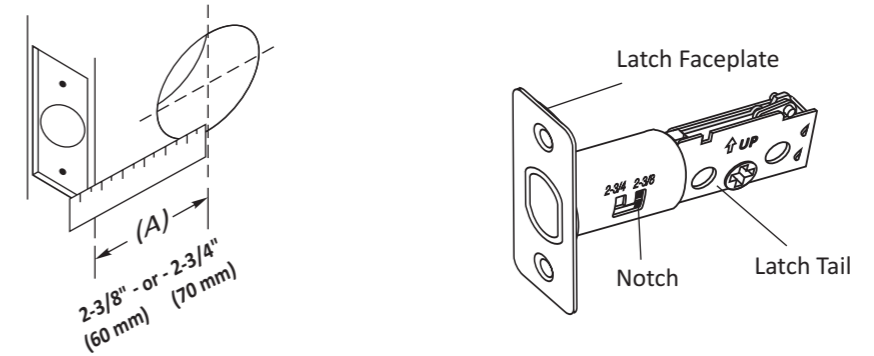
FOR USE ON DOORS 1-3/8" TO 1-3/4" (35mm-45mm)

1. MARK DOOR A. Fold and apply template to high edge of door bevel and mark center of door edge as indicated on template at the desired height from the floor.		5. INSTALL EXTERIOR MECHANISM A. Press cylinder side flush against door making certain the torque blade is properly positioned in latch crank. B. Tapped holes in mounting plate of exterior cylinder should be lined up with latch holes. Key hole should be in down position.	
2. DRILL HOLES A. Drill thru door face as marked for lockset: It is recommended that holes be drilled from both sides to prevent splitting. Hole size is 2" (50.8mm) for standard installations.		6. INSTALL INTERIOR MECHANISM A. Slide thumb bar and interior rosette onto torque blade.	
3. INSTALL LATCH A. Insert latch in hole keeping it parallel to face of door. Mark outline and remove latch.		INSTRUCTIONS FOR INSTALLING DOUBLE CYLINDER DEADLOCKS Exterior half is fully assembled with exterior torque blade EXTERIOR TORQUE BLADE	
4. INSTALL STRIKE A. Bore 1" hole 1" minimum deep for deadbolt.		NOTE: This assembly is placed through latch first.	
B. Mortise 1/16" deep for strike locating from 1" hole in door insert and tighten screws.		A. Install interior cylinder INTERIOR TORQUE BLADE	
B. Chisel 1/8" deep or until latch face is flush with door edge.		NOTE: The interior torque blade is inserted into the exterior blade.	
C. Install deadbolt latch in up position into hole as shown on latch insert and tighten screws.		B. Press interior assembly flush against door making certain the torque blade is properly positioned in latch hole. Key hole should be in down position.	
C. Drill 1" (25mm) hole in center of door edge thru to 2" (50.8mm) hole for latch.		C. Insert (2) two screws through countersunk holes engaging holes in exterior cylinder and tighten.	

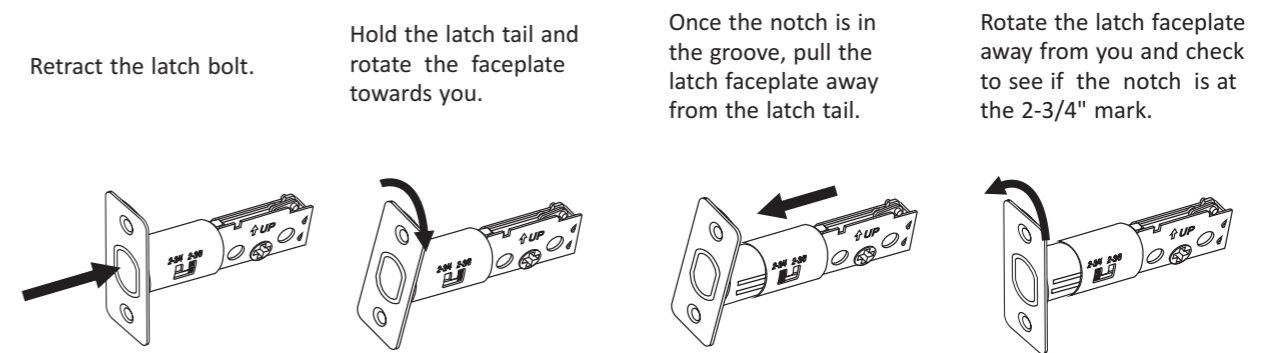


Selecting the Proper Backset

The backset is the distance from the door edge to the center of the hole



To adjust the backset from 2-3/8" to 2-3/4" follow these steps.



To adjust the backset from 2-3/4" to 2-3/8" follow these steps.

