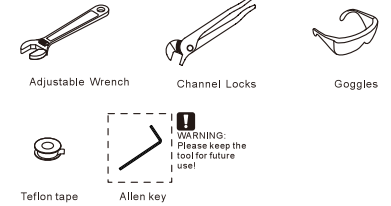


Widespread Bathroom Basin Sink Faucet

product is CUPC, AB1953, WATERSENSE and NSF certified.

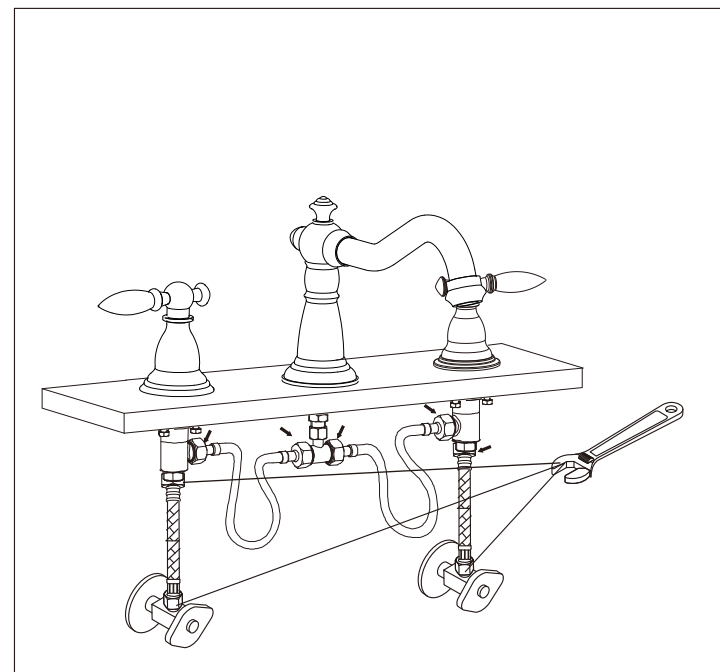
ASME A112.18.1/CSA B125.1

RECOMMENDED TOOLS



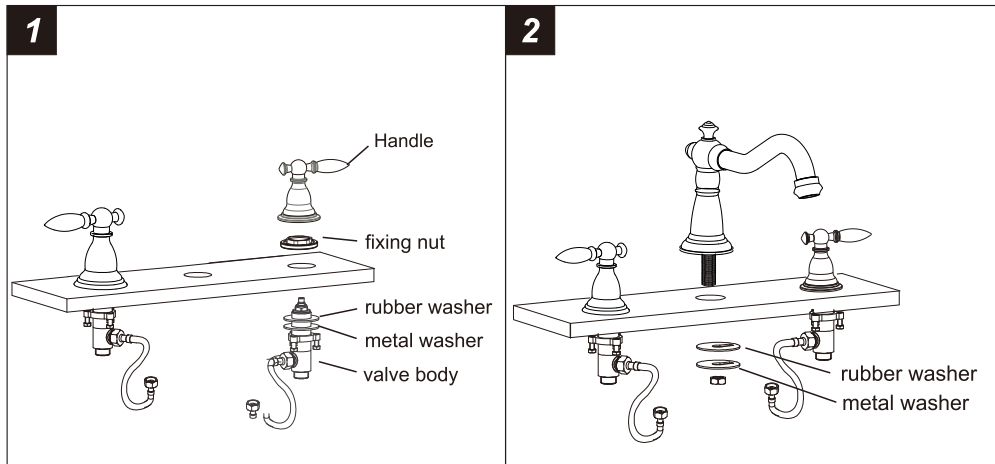
! Attention:
for easy installation, you will need:
1.To read all the installation instruction completely before beginning.
2.To read all the warning, attention and maintenance information.
3.To purchase the proper supply lines.

The tools might be applied to the following places:



NO.	Description	NO.	Description
1	Handle	15	Valve body
2	Rubber ring	16	T-Joint
3	Cover	17	Rubber ring
4	Adapter	18	Flow rate restrictor
5	Philips round head screws	19	Nut
6	O-ring	20	Metal washer
7	Rubber washer	21	Rubber washer
8	O-ring	22	Shank
9	Cartridge	23	O-ring
10	Fixing nut	24	Main body
11	Rubber gasket	25	Rubber ring
12	Metal gasket	26	Aerator
13	Lock nut	27	Spout shell
14	Screw	28	Hot & cold hose

Step 1 Faucet installation

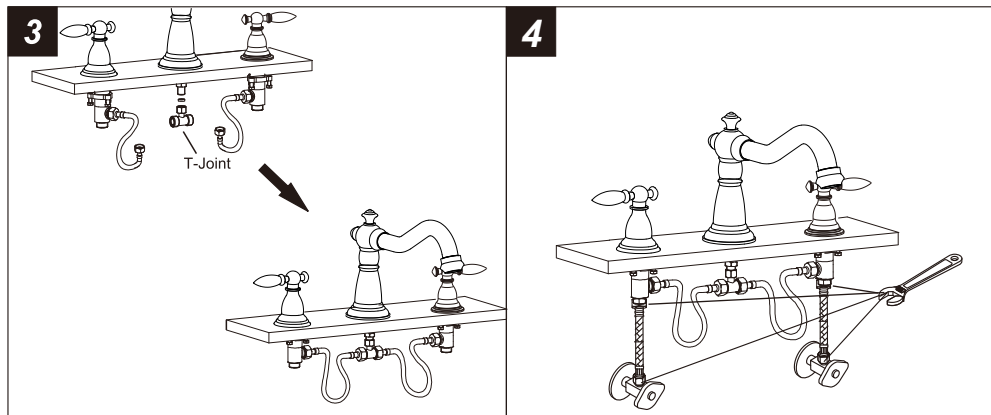


1. Handle installation

- 1-1. Disassemble the cold water handle.
- 1-2. From underneath, insert the cold water valve, rubber washer, metal washer and lock nut. From Top, install the handle and fixing nut.
- 1-3. Screw the nut to secure the valve.
- 1-4. Repeat steps to install hot water handle and hot water valve.

2. Spout installation

- 2-1. Disassemble the spout .
- 2-2. Place rubber washer, metal washer and nut in order and secure the nut.



3. Connect and tighten the T-Joint to the shank. Connect hoses from valve body to the T-Joint.

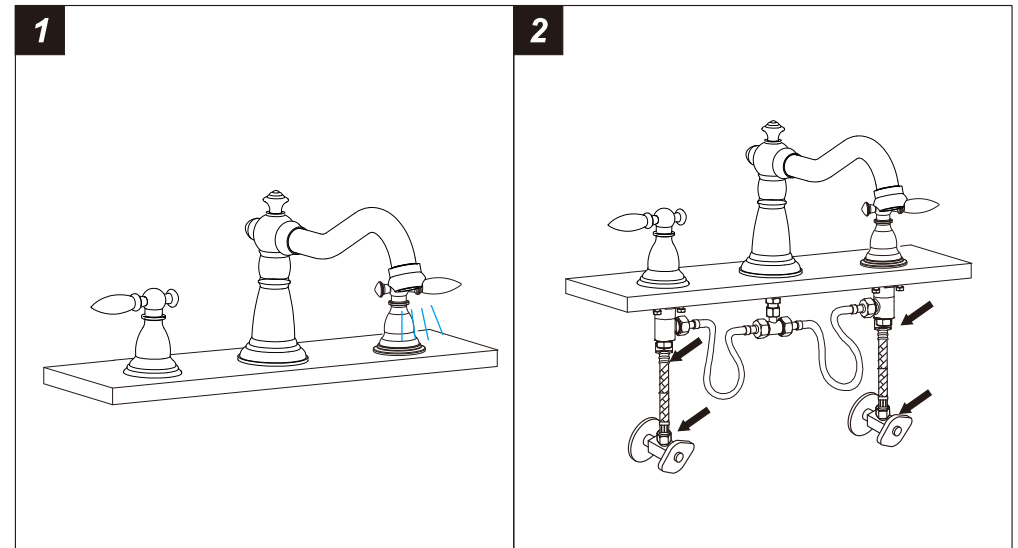
4. Connect the flexible hoses to water supply valve (not included) and copper tubes, and tighten it with adjustable wrench. **DON'T OVER TIGHTEN!**

Caution: make sure connect the hot and cold flexible hose to supply valves correctly.



Warning: The supply valves are not included, please purchase them in plumbshop.

Step 2 Checking and testing



1. Turn the faucet handle all the way on, turn on hot and cold water supply and flush water lines for one minute.
2. Check all connections at arrows for leaks, re-tighten it if necessary.



BUT DON'T OVERTIGHTEN

Step 3 Cleaning and care

Daily cleaning and care are required in order to keep the product shining and properly working.

- 1 Clean it with water and dry it with soft cloth.
- 2 Clean the product with gentle liquid or glass cleaner.
- 3 Don't use acid cleaner.
- 4 Don't clean with abrasive material, abrasive paper or knife.