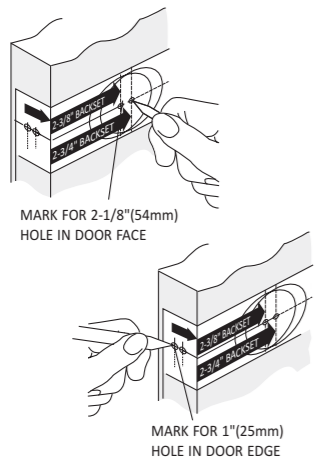


Door Lock Instructions New Door Preparation

JSC-FG5-D1015

Step 1 : Mark Door

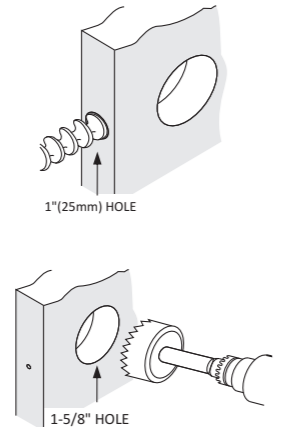


Fold Template below on Fold Line and Mark Door for Lock Bore Hole at 2-3/4" or 2-3/8" Backset and lock Edge Hole Centered on the door edge.
 Note: Most exterior doors 2-3/4" Backset is used

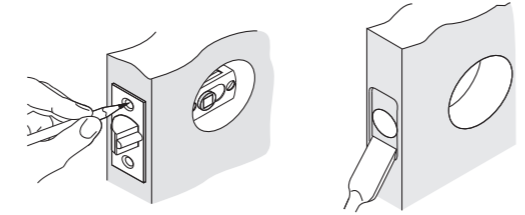
Common Standard for Lock Height off Floor is 36" above the floor. Deadbolt should be 5.5" above the entrance Knob or lever

Step 2 : Drill Holes

- A) Drill the 1" Latch Hole from the door edge fully into the Lock Bore hole.
- B) Drill through Door Face with 1-5/8" hole saw. Drill Just Past 1" Latch hole being Careful not to Punch through door with Pilot bit.



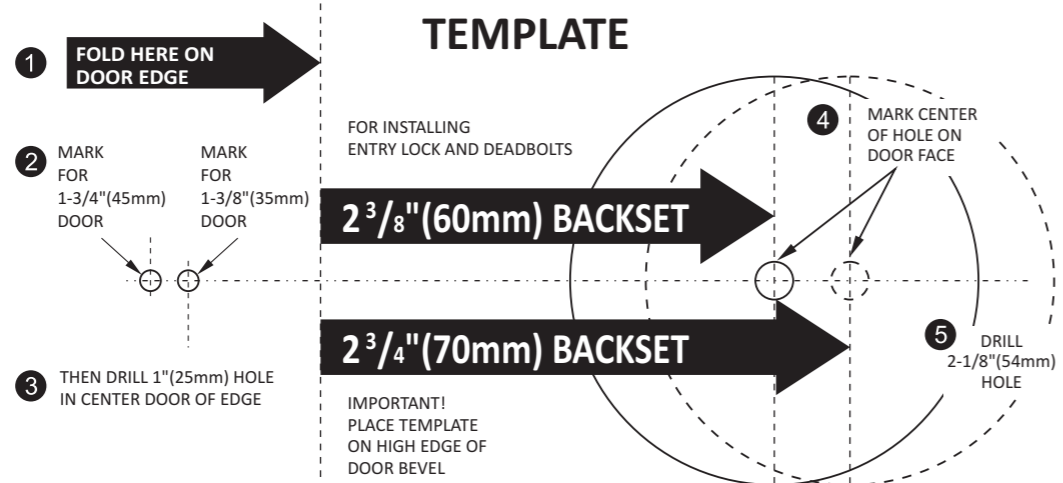
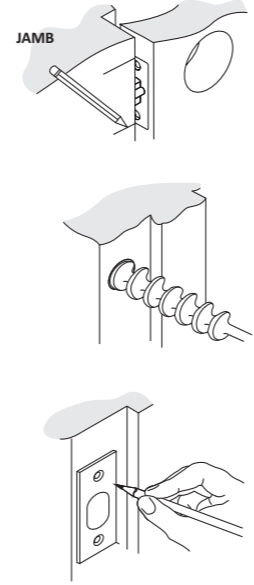
Step 3 : Mortise Door for Latch



- A) Insert Latch into Hole and keeping it parallel to the door Edge mark the Outline.
- B) Mortise the Door edge with a Chisel or Router 1/8" deep or until the latch Face plate is flush with the door when installed.

Step 4 : Prepare Jamb for Strike

- A) Insert Latch into hole in door and Mark where it will hit the door Jamb when properly closed.
- B) Drill a 1" hole a Minimum of 1" deep into the door Jamb at the position Marked.
- C) If the Door is a tight fit to the Jamb you may need to mark the strike and mortise the Jamb so the strike sits flush to the door.

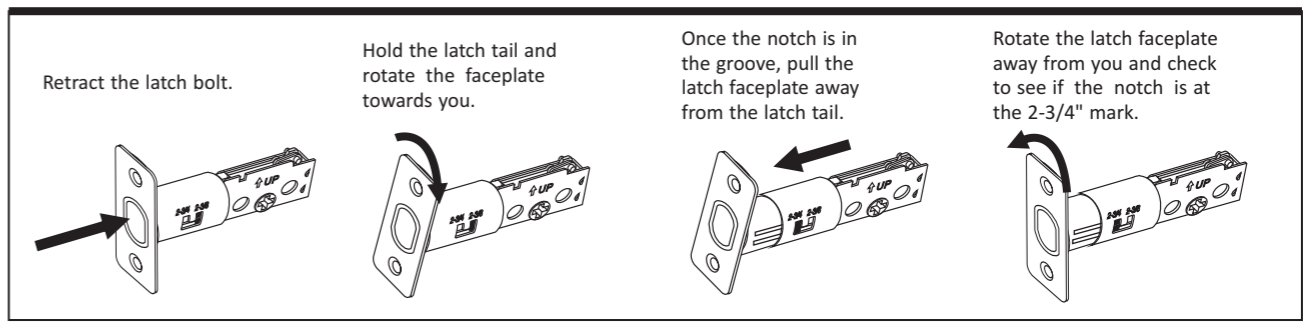


Half Bore One-Sided Deadbolt Lock Installation

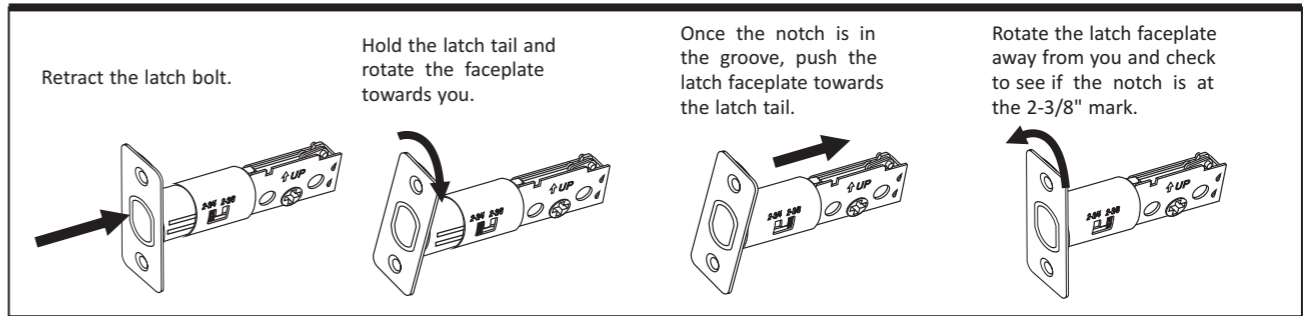
JSC-FG5-D1015

Step 1 : Adjust Latch Backset to match your door

To adjust the backset from 2-3/8" to 2-3/4" follow these steps.

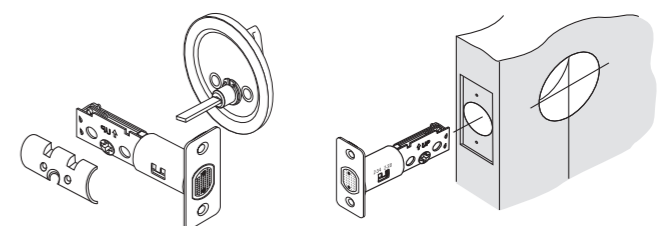


To adjust the backset from 2-3/4" to 2-3/8" follow these steps.



Step 2 : Install Latch into the door

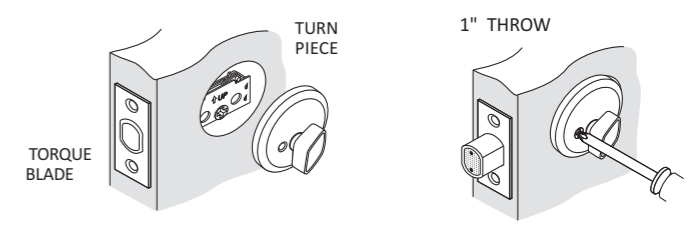
Install Latch into door with Plastic Insert on back side of the latch with bolt studs passing into latch. Screw into place with provided wood screws.



Step 3 : Install Lock body

- A) Install the interior of the lock by inserting the spindle into cross cam of latch and pressing Flush to the door. Insert screws through holes and tighten down with a hand-held screwdriver.

Note: Check alignment of the lock as you tighten the screws to keep lock centered over the bore Hole.



Step 4 : Install Strike

Install Strike and test lock. Adjust Strike position if necessary, for firm Closure.

