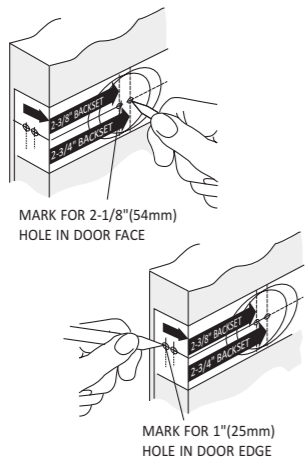


Door Lock Instructions New Door Preparation

Step 1 : Mark Door

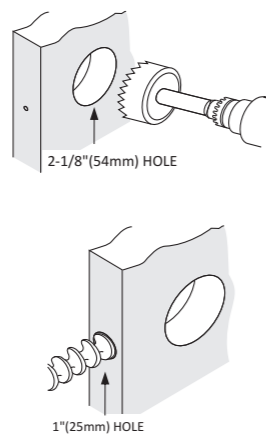


Fold Template below on Fold Line and Mark Door for Lock Bore Hole at 2-3/4" or 2-3/8" Backset and lock Edge Hole Centered on the door edge.
 Note: Most exterior doors 2-3/4" Backset is used

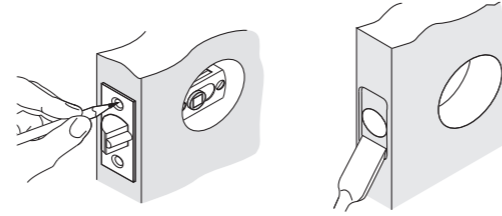
Common Standard for Lock Height off Floor is 36" above the floor. Deadbolt should be 5.5" above the entrance Knob or lever

Step 2 : Drill Holes

- A) Drill through Door Face with 2-1/8" hole saw. Drill one side until Guide Bit punches through then Drill from through with the Hole saw from the other side to Complete the Lock Bore Hole
- B) Drill the 1" Latch Hole from the door edge fully into the Lock Bore hole



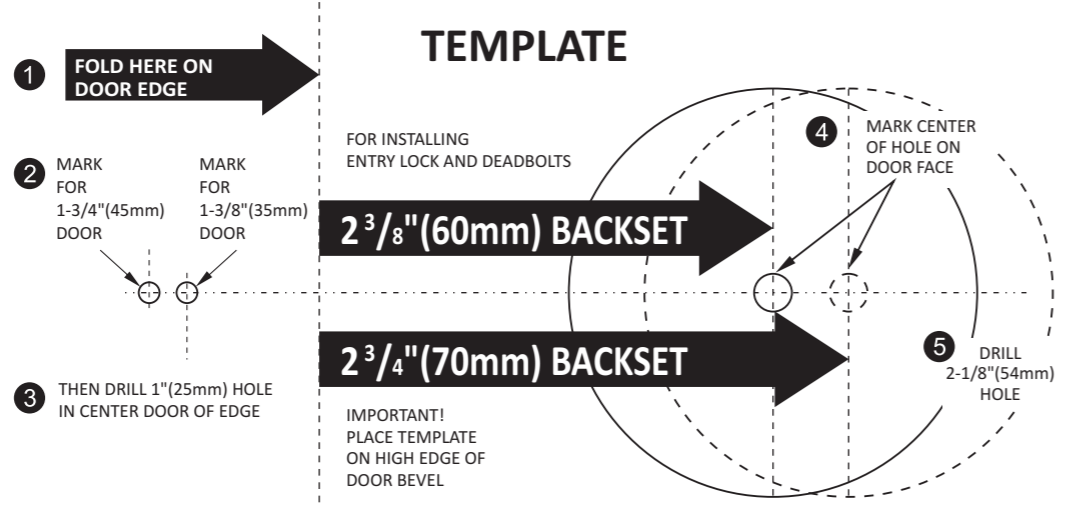
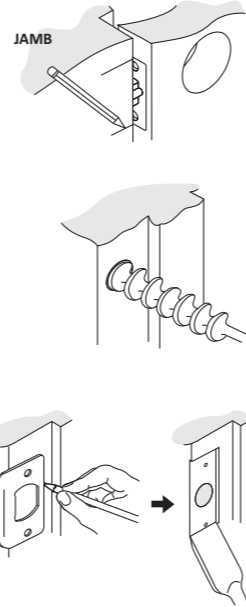
Step 3 : Mortise Door for Latch



- A) Insert Latch into Hole and keeping it parallel to the door Edge mark the Outline
- B) Mortise the Door edge with a Chisel or Router 1/8" deep or until the latch Face plate is flush with the door when installed

Step 4 : Prepare Jamb for Strike

- A) Insert Latch into hole in door and Mark where it will hit the door Jamb when properly closed.
- B) Drill a 1" hole a Minimum of 1" deep into the door Jamb at the position Marked.
- C) If the Door is a tight fit to the Jamb you may need to mark the strike and mortise the Jamb so the strike sits flush to the door.



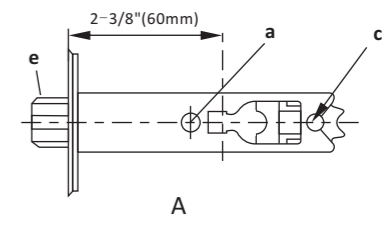
Door Lock Installation

JSC-FGS-5762+D101

Step 1 : Adjust Latch Backset

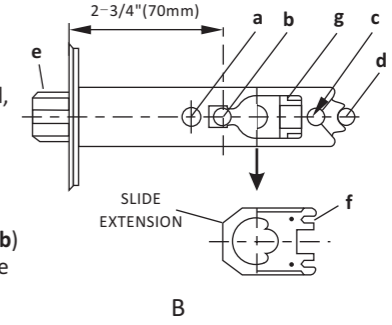
A) FOR 2-3/8" (60mm) BACKSET INSTALLATION

- 1. The latch is factory preset at 2-3/8" (60mm) backset, which is standard for most doors.
- 2. To use the 2-3/8" (60mm) backset, no adjustment is required, simply insert the screw stems on the outside knobs thru holes (a) & (c) of the latch, proceed to step 4 of the instructions for installing lockset.



B) FOR 2-3/4" (70mm) BACKSET INSTALLATION

- 1. Push in front of latch (e) and hold it.
- 2. Use a screwdriver to push the black insert slide extension up or down and remove the slide extension from inside the latch. For best results, while keeping the latch depressed, push down on the top front (closest to e) of the extension slide, while at the same time releasing the latch.
- 3. Latch is ready for installation.
- 4. When using the 2-3/4" (70mm) backset, lockset screw stems are inserted through hole (b) of the latch and against the outside of location (d) on the latch. proceed to step 4 of the instructions for installing lockset.

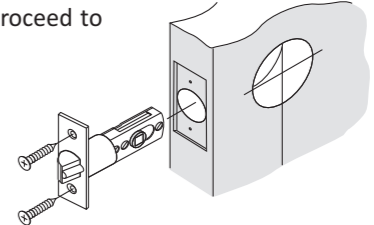


Note: To reverse the adjustment from 2-3/4" (70mm) to 2-3/8" (60mm):

- 1) Depress latch (e)
- 2) Catch the open slot on the rear of the extension piece (f) on the notch (g) inside the latch.
- 3) Lower extension piece into latch while at the same time releasing the latch. Proceed to step 4 of the instructions for installing lockset.

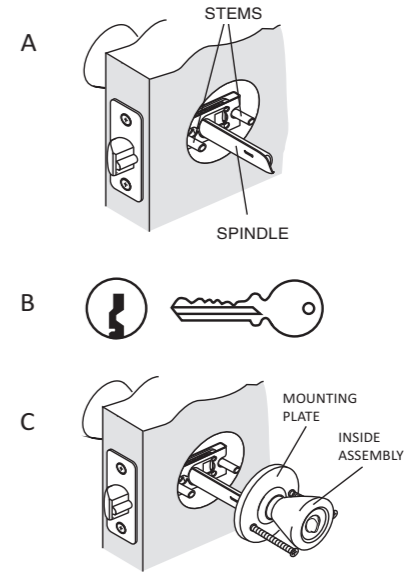
Step 2 : Install Latch into the door

Install Latch into door positioned so that wedged shaped side of Bolt engages the strike first when closing the door



Step 3 : Install Lock body

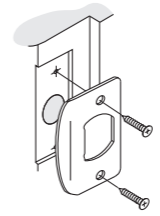
- A) Install exterior of lock by Inserting Lock Spindle Through Half Moon Opening and Studs through round holes until lock is Flush with the door. (Press in and Hold Latch to make inserting spindle easy)
- B) For Knobs with vertical key slots the knob should be installed with the Key Slot positioned so that the Key will be teeth up when used.
- C) Install the interior of the lock by inserting it over the spindle and pressing Flush to the door. Insert screws through holes and tighten down with a hand-held screwdriver.



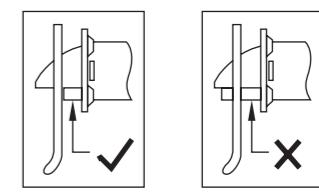
Note: It may be necessary to twist lock knob on interior assembly of lock to align with connector bar.
 Note: Check alignment of the lock as you tighten the screws to keep lock centered over the bore Hole

Step 4 : Install Strike

Install Strike and test from inside. Adjust Strike position if necessary, for firm Closure.



Entry Lock only – Ensure Security Pin Seats Properly



INSTRUCTIONS FOR INSTALLATION OF SINGLE AND DOUBLE CYLINDER DEADLOCKS

JSC-FGS-5762+D101

FOR USE ON DOORS 1-3/8" TO 1-3/4" (35mm-45mm)

1. MARK DOOR A. Fold and apply template to high edge of door bevel and mark center of door edge as indicated on template at the desired height from the floor.		5. INSTALL EXTERIOR MECHANISM A. Press cylinder side flush against door making certain the torque blade is properly positioned in latch crank. B. Tapped holes in mounting plate of exterior cylinder should be lined up with latch holes. Key hole should be in down position.		<h3>Selecting the Proper Backset</h3> <p>The backset is the distance from the door edge to the center of the hole</p> <p>2-3/8" - or - 2-3/4" (60 mm) (70 mm)</p>	
B. Mark center hole on door face through guide on template for either 2-3/8" (60mm) or 2-3/4" (70mm) backset.		TORQUE BLADE SHOULD BE HORIZONTALLY INSERTED INTO LATCH CRANK			
2. DRILL HOLES A. Drill thru door face as marked for lockset: It is recommended that holes be drilled from both sides to prevent splitting. Hole size is 2" (50.8mm) for standard installations.		6. INSTALL INTERIOR MECHANISM A. Slide thumb bar and interior rosette onto torque blade.		<p>To adjust the backset from 2-3/8" to 2-3/4" follow these steps.</p> <p>Retract the latch bolt.</p> <p>Hold the latch tail and rotate the faceplate towards you.</p> <p>Once the notch is in the groove, pull the latch faceplate away from the latch tail.</p> <p>Rotate the latch faceplate away from you and check to see if the notch is at the 2-3/4" mark.</p>	
B. Drill 1"(25mm) hole in center of door edge thru to 2"(50.8mm) hole for latch.		B. Insert machine screws through holes engaging holes in cylinder and tighten.			
3. INSTALL LATCH A. Insert latch in hole keeping it parallel to face of door. Mark outline and remove latch.		INSTRUCTIONS FOR INSTALLING DOUBLE CYLINDER DEADLOCKS Exterior half is fully assembled with exterior torque blade		<p>To adjust the backset from 2-3/4" to 2-3/8" follow these steps.</p> <p>Retract the latch bolt.</p> <p>Hold the latch tail and rotate the faceplate towards you.</p> <p>Once the notch is in the groove, push the latch faceplate towards the latch tail.</p> <p>Rotate the latch faceplate away from you and check to see if the notch is at the 2-3/8" mark.</p>	
B. Chisel 1/8" deep or until latch face is flush with door edge.		NOTE: This assembly is placed through latch first.			
C. Install deadbolt latch in up position into hole as shown on latch insert and tighten screws.		A. Install interior cylinder		<p>NOTE: The interior torque blade is inserted into the exterior blade.</p>	
4. INSTALL STRIKE A. Bore 1" hole 1" minimum deep for deadbolt.		INTERIOR TORQUE BLADE			
B. Mortise 1/16" deep for strike locating from 1" hole in door insert and tighten screws.		B. Press interior assembly flush against door making certain the torque blade is properly positioned in latch hole. Key hole should be in down position.		C. Insert (2) two screws through countersunk holes engaging holes in exterior cylinder and tighten.	
1 FOLD HERE READ INSTRUCTIONS 1-3/4" (45mm) THICK DOOR 2 MARK PROPER DOOR THICKNESS 1-3/8" 35mm THICK DOOR 3 DRILL 1" (25mm) HOLE IN EDGE OF DOOR (2" IN DEPTH)		4 MARK BACKSET DISTANCE 2-3/8" (60mm)		5 DRILL 2" (50.8mm) HOLE	
2-3/8" BACKSET		NOTE: TEMPLATE MUST BE PLACED ON HIGH EDGE OF DOOR BEVEL			