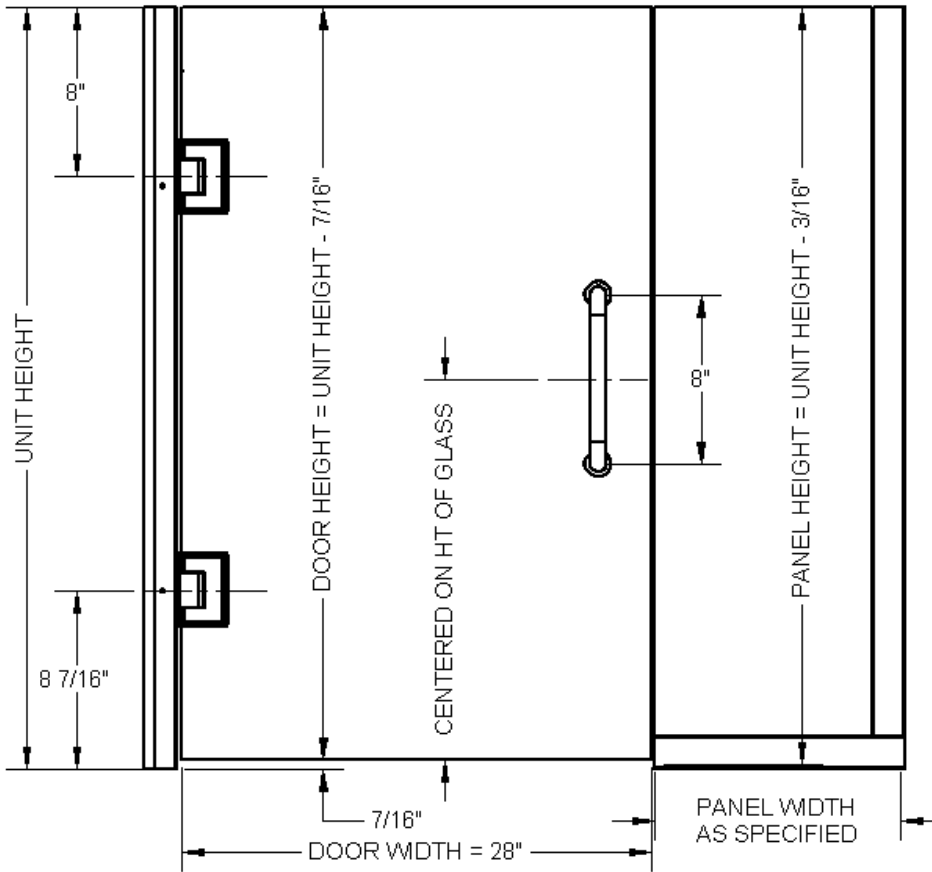


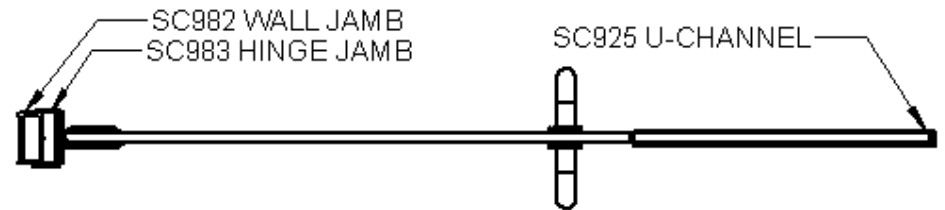
VERTICAL CROSS SECTION



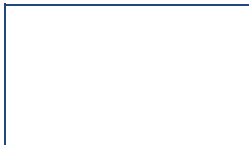
NOTES:

1. Uses HG1J hinges
2. Uses PU1D 8" pull handle
3. 1/2" OOP on hinge side, 1" OOP on panel side

HORIZONTAL CROSS SECTION



NOTE: GLAZING MATERIAL FOR ALL KD UNITS AND GLAZED UNITS MUST CONFORM TO ANSI Z97.1 AND CPSC STANDARD 16 CFC 1201 CATEGORY 1 & 2



Adjustable Heavy
Glass Door & Panel



1.855.480.2915 • info@miseno.com