



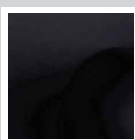
Available Finishes



POLISHED CHROME
(MH-xHOW-CP)



SATIN NICKEL
(MH-xHOW-SN)



FLAT BLACK
(MH-xHOW-FB)

Available Functions

- Passage (MH-1HOW)
- Privacy (MH-2HOW)
- Entry (MH-3HOW)
- LH/RH Dummy (MH-4HOW)
- LH/RH Interior Pack (MH-5HOW)

Features

- Reversible handing
- Kwikset and Schlage keyway options (when applicable).
- Adjustable backset (2-3/8" - 2-3/4")
- Brass construction
- All metal parts
- Drive-in latch option
- Industry standard finishes
- Five year finish warranty
- Limited lifetime mechanical warranty
- BHMA and ANSI Grade 3 certified.

Specifications

- Lever dimensions: 2-1/2" x 4-5/8"
- Lever projection: 2-1/2"
- Rosette radius: 2-1/2"
- Door thickness: 1-3/8" to 1-3/4"
- Material: Formed brass
- Handing: Non-handed
- Backset: 2-3/8" or 2-3/4"
- Crossbore: 2-1/8"
- Edgebore: 1"
- Strike plate: 2-1/4" x 1-3/4" full lip radius corner standard
- Warranty: 5 Years finish Limited lifetime mechanical

Not approved for commercial use

Installation Notes

- Check that all parts are included before beginning installation.
- Check any keyways for function prior to installation.
- Oil Rubbed Bronze and Vintage Bronze are "living" finishes and will wear with time.

DIMENSIONS & MEASUREMENTS

