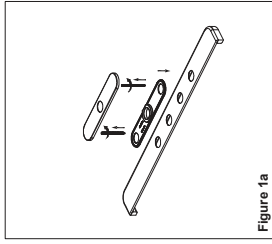


## Faucet Installation Instructions

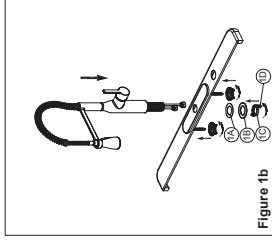
MK500

- Hole diameters are 1 1/4" minimum to 2 1/2" maximum
- Maximum deck thickness is 2.3/8" (single hole/faucet only mounting) or 2 5/8" (with soap pump, without escutcheon) or 2 1/4" (with escutcheon)
- This kitchen faucet comes completely assembled and water tested
- Includes braided nylon supply lines with 1/2" IPS inlets
- Tools required-channel lock pliers (or pipe wrench), basin wrench and small crescent wrench
- Shut off water supply prior to beginning installation



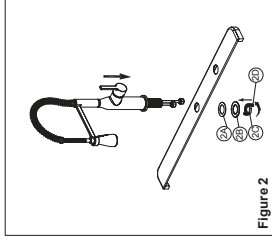
**Figure 1a**

**Step 1a Three Hole Mounting**  
Screw bolts to the escutcheon. Insert escutcheon assembly through the base plate and the holes of the sink.



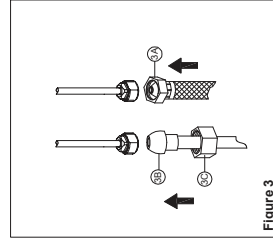
**Figure 1b**

**Step 1b Three Hole Mounting**  
Insert faucet through hole in escutcheon. From underneath sink, attach rubber washer (1A), metal washer (1B), and nut (1C). Lock nut (1C) into position by tightening screws (1D).



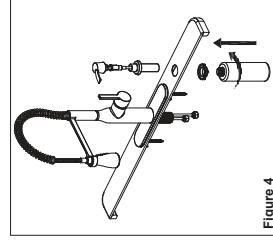
**Figure 2**

**Step 2 Single Hole Mounting**  
Insert faucet through hole in sink or countertop. From underneath sink, attach rubber washer (2A), metal washer (2B), and nut (2C). Lock nut (2C) into position by tightening screws (2D).



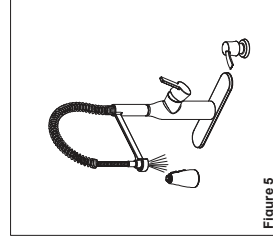
**Figure 3**

**Step 3**  
Make connections to water lines. Use 1/2" P.P.S. faucet connections (3A, not included) or use coupling nuts (3C, not included) with 3/8" O.D.ball-nose riser (3B). Use wrenches to tighten connections. Do not overtighten.



**Figure 4**

**Step 4**  
**Install Soap Dispenser (Optional)**  
Remove the bottle. Separate head from body. Push the dispenser body into the hole in the sink. The dispenser head taking care not to pull directly on the spigot. Make sure the flange is properly seated then insert body assembly through selected hole in sink and secure with nut. From under the sink screw the bottle onto the body. Tighten the nut. Push the bottle up to the counter then attach soap dispenser head.  
**NOTE:** To refill soap bottle simply remove dispenser body and fill from above counter.

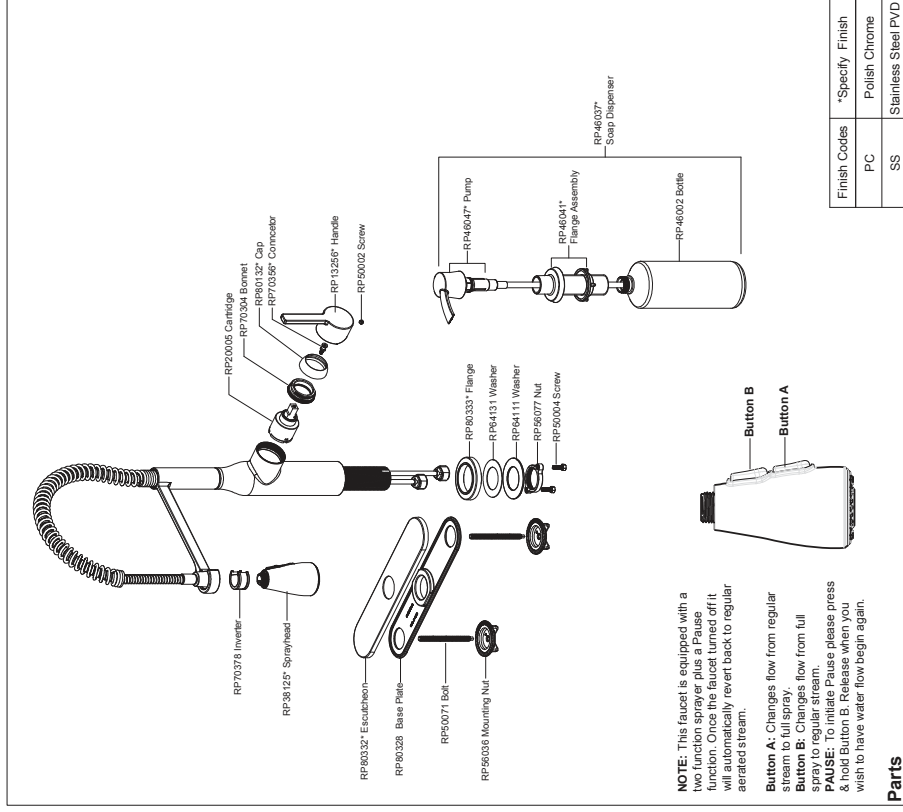


**Figure 5**

**Step 5**  
**Important:** After installation is completed, to prevent damage to the internal parts of your faucet from debris that may have collected in the water lines, it will be necessary to flush the faucet. Turn the faucet on to full spray and remove spray head. Hold the end of the hose down into the sink and turn the faucet on to the warm position so hot and cold water are mixed. Flush water lines for one minute. Check for leaks and re-tighten any connections if necessary. Push spray head by screwing onto end of hose by hand.

## Faucet Installation Instructions

MK500



**NOTE:** This faucet is equipped with a two function sprayer plus a Pause function. Once the faucet turned off it will automatically revert back to regular aerated stream.

**Button A:** Changes flow from regular stream to full spray.  
**Button B:** Changes flow from full spray to regular stream.

**PAUSE:** To initiate Pause please press & hold Button B. Release when you wish to have water flow begin again.

### Parts

Finish Codes	*Specify Finish
PC	Polish Chrome
SS	Stainless Steel PVD

**Maintenance :** Clean with warm water, soft cotton cloth and non-abrasive liquid dish soap. Towel dry. Never use acids, harsh abrasives, detergents, or products containing chlorides on any parts of this product.

MISENO

For additional assistance or service call: 1-855-480-2915 or visit our website [www.miseno.com](http://www.miseno.com)

MISENO

For additional assistance or service call: 1-855-480-2915 or visit our website [www.miseno.com](http://www.miseno.com)