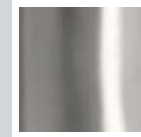


Available Finishes



BRUSHED
NICKEL
(MSDC6060-BN)



POLISHED
CHROME
(MSDC6060-SV)



OIL RUBBED
BRONZE
(MSDC6060-ORB)

Features

- Space-saving sliding doors
- 3/8" thick tempered safety glass
- Frameless door panels
- H2OFF™ clean glass technology
- Reversible entry point
- Integrated towel bar
- Safe-slide smooth operation
- Up to 3/4" frame adjustment

H2OFF™ Technology

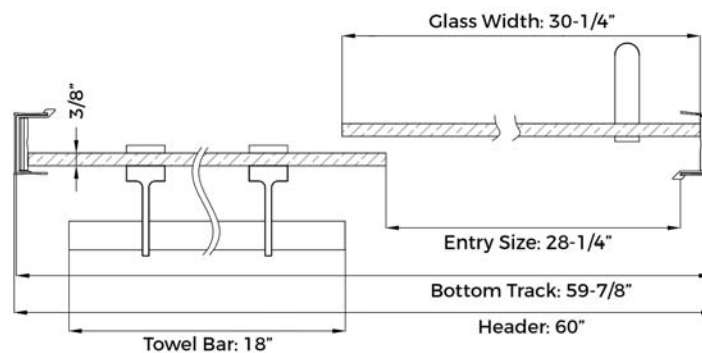
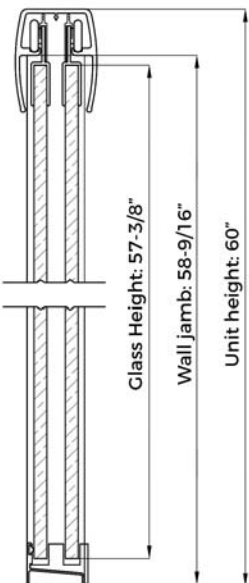
H2OFF™ is a liquid polymer applied to the glass that is hydrophobic (repels water) and prevents the buildup of soap scum and hard water deposits.

H2OFF™ has a 10 year warranty.

Specifications

- Header length: 60"
- Unit Height: 60"
- Minimum Width: 56"
- Entry Width: 28-1/4"
- Glass Width: 30-1/4"
- Glass Height: 57-3/8"
- Glass Thickness: 3/8"
- Wall Jamb Height: 58-9/16"
- Towel Bar Length: 18"
- Limited Lifetime Warranty

DIMENSIONS & MEASUREMENTS



Installation Notes

THE F.I.A.S.C.O. PROGRAM:

Failure, Incompetence, Accident, Screw-up, Calamity or Oversight? Our F.I.A.S.C.O. program is here to help. We'll replace miscut or damaged headers, bottom rails and transitions free of charge. This is a one-time service per installation. Call us today.