

Miele

24" Whole Bean Coffee System Plumbed

CVA 6405, CVA 6805



Shown: CVA 6805 over ESW 6214
Please note: This information is subject to change

mieleusa.com
Specification Sheet TRS 05182018

24" Whole Bean Coffee System Plumbed

SPECIFICATIONS	
Overall Unit Dimensions - Excluding Fascia Dimension	21 ⁷ / ₁₆ " (545 mm) W x 17 ¹ / ₂ " (445 mm) H x 19 ⁵ / ₈ " (496 mm) D
Overall Fascia Dimensions	23 ⁷ / ₁₆ " (595 mm) W x 17 ¹⁵ / ₁₆ " (455.5 mm) H x 1 ³ / ₁₆ " (22 mm) D
Door Depth When Open	23 ⁷ / ₁₆ " (594 mm)
Built-In	
Minimum Cabinet Opening Dimensions	22 ¹ / ₁₆ " (560 mm)W x 17 ¹¹ / ₁₆ " (450 mm) H x 21 ⁵ / ₈ " (550 mm) D
Minimum Base Support	62 lbs
Additional Cut-outs Required	Venting: 19 ¹¹ / ₁₆ " (500 mm) x 1 ⁹ / ₁₆ " (40 mm) or 31" in ² (200 cm ²)
Plumbing	
Do not Connect to Reverse Osmosis (RO) System	
Water Supply Requirements	Connect to a cold water supply only. Must be connected to a shut-off valve. The water shut-off valve must be accessible after installation. The water pressure must be between 14.5 psi (1 bar) and may not exceed 145 psi (10 bar). If the pressure is higher than 145 psi (10 bar), a pressure reducing valve must be installed.
Water Connection Line	³ / ₄ " BSP to ¹ / ₄ " Compression fitting is supplied. Suitable ¹ / ₄ " O.D flexible water line or copper piping is not supplied. Maximum water line length 4'11" (1.5 m).
Electrical	
Electrical Requirements	120V, 60Hz, 15A
Power Cord	Molded NEMA 5-15A plug, 6 ft (1.8 m)
Shipping	
Shipping Weight	70 lbs
Shipping Dimensions	23 ⁵ / ₈ " W x 22 ¹ / ₁₆ " H x 26" L
Support	
Call Miele	(800) 999-1360
Miele Website	www.mieleusa.com
20/20 Link	2020technologies.com



CVA 6405
Item 29640550USA



CVA 6805
Item 29680550USA



CVA 6805 BRWS
Item 29680510USA



CVA 6805 GRGR
Item 29680530USA

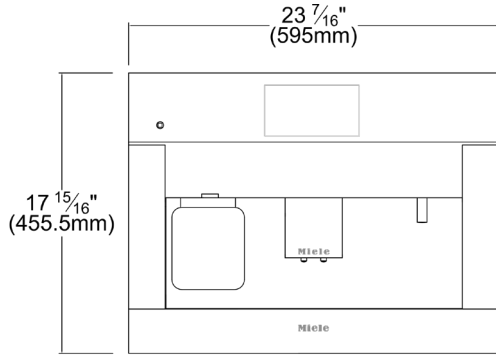


CVA 6805 OBSW
Item 2680520USA

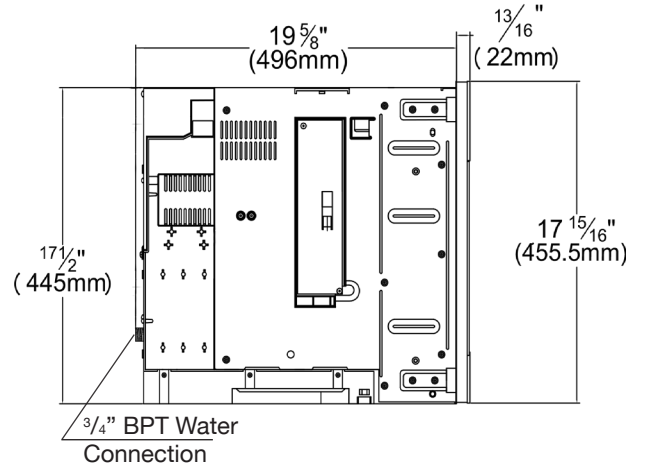
24" Whole Bean Coffee System Plumbed

INSTALLATION SPECIFICATIONS

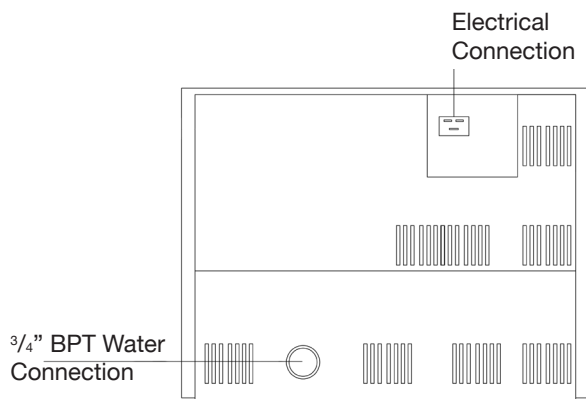
Front View



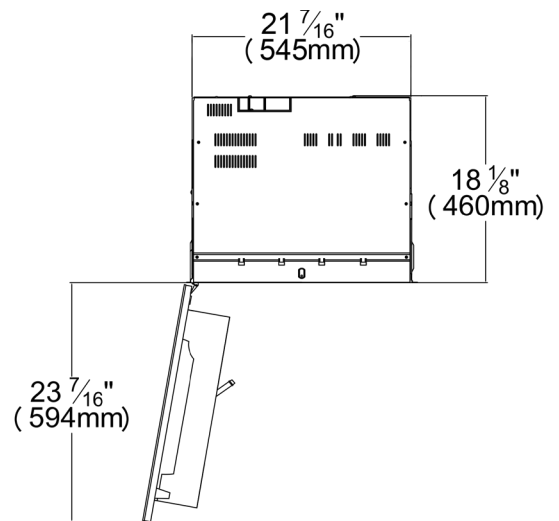
Side View



Rear View



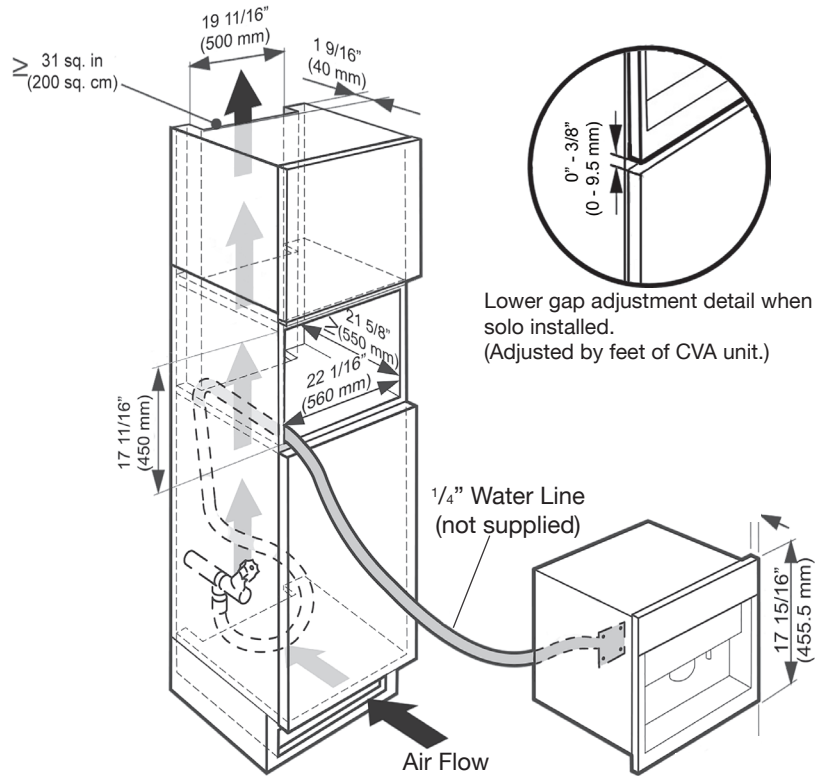
Top View, Door Open



24" Whole Bean Coffee System Plumbed

INSTALLATION SPECIFICATIONS

Solo Installation

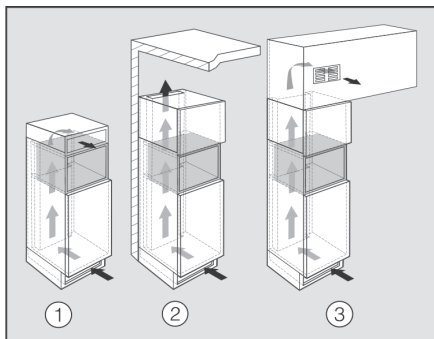


VENTILATION REQUIREMENTS

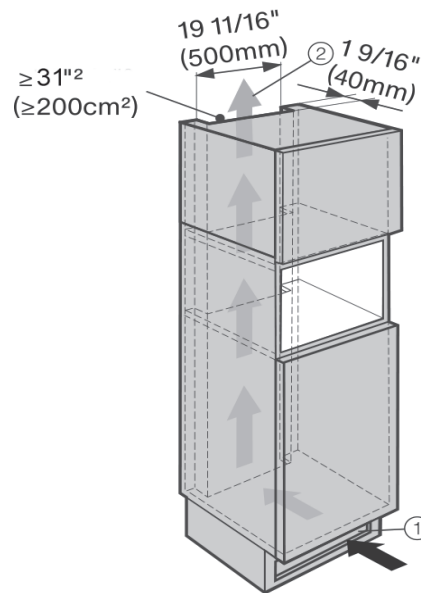
PLEASE NOTE:

Condensation water can damage the coffee system or surrounding cabinets. The specified ventilation cross-sections absolutely must be observed.

VENTILATION OPTIONS:



- ① Directly above the coffee system with a ventilation grille (free airflow of at least 31 square inches / 200 cm²)
- ② Between the surrounding cabinets and the ceiling
- ③ Through a suspended ceiling

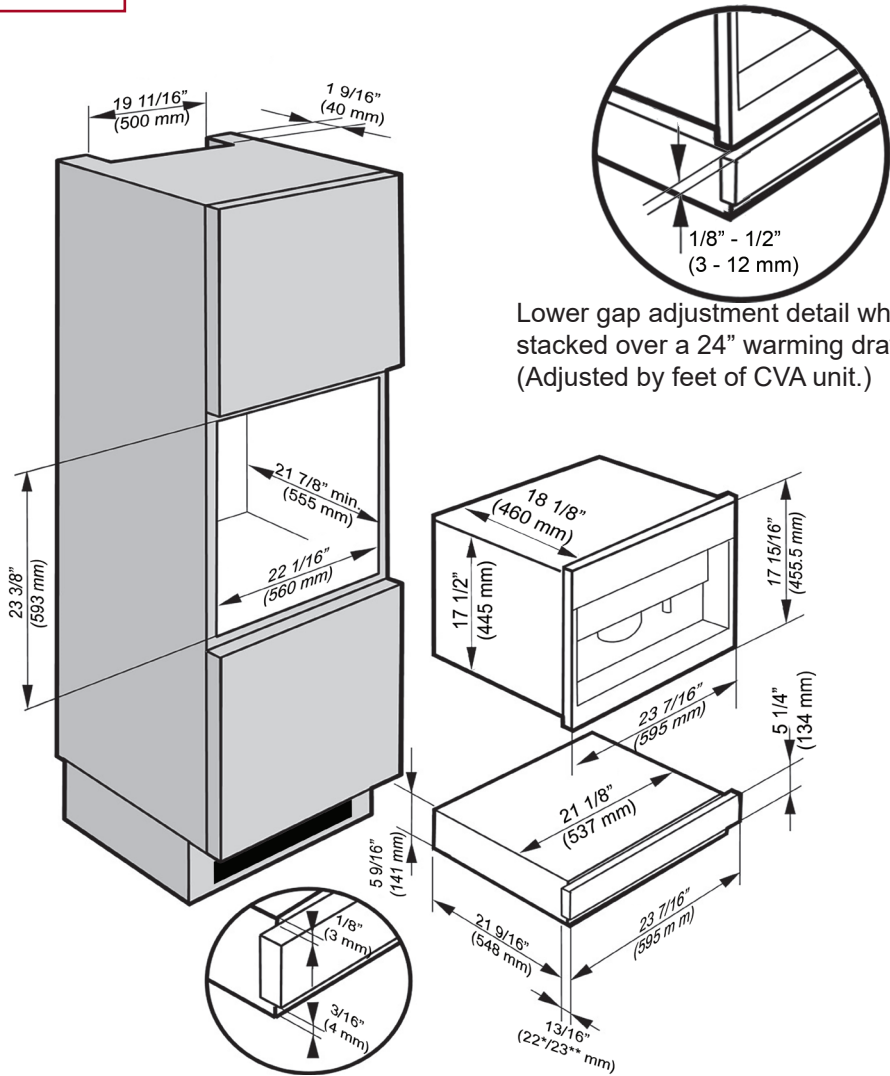


Air intake ① occurs via the plinth at the bottom of the appliance and the air escapes at the top ② at the rear of the surrounding cabinets.

24" Whole Bean Coffee System Plumbed

INSTALLATION SPECIFICATIONS With Warming Drawer (ESW 6x14)

PLEASE NOTE: Condensation water can damage the coffee system or surrounding cabinets. The specified ventilation cross-sections absolutely must be observed.



Lower gap adjustment detail when stacked over a 24" warming drawer. (Adjusted by feet of CVA unit.)