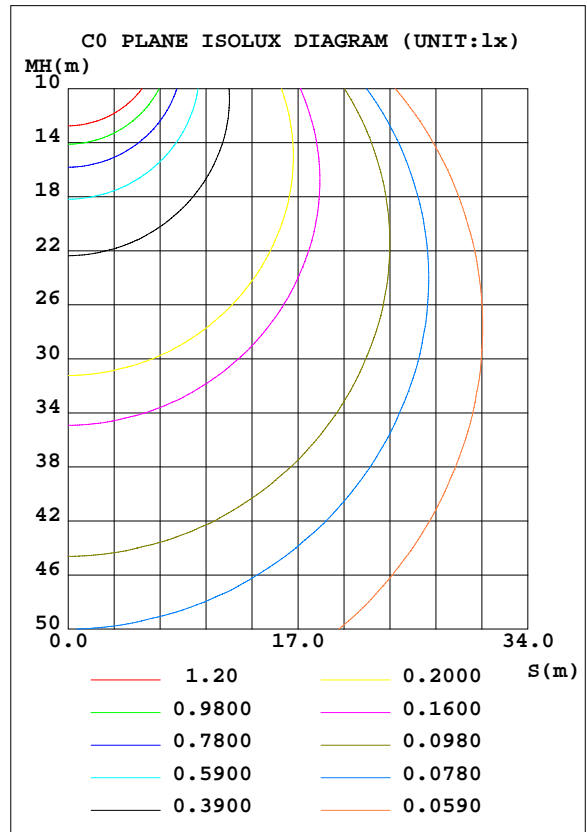
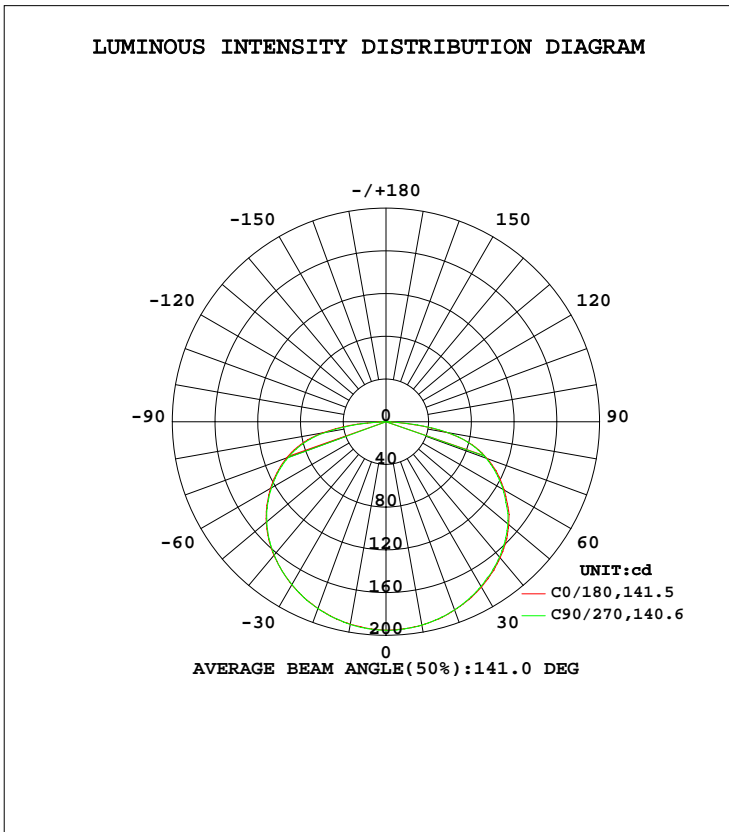


LUMINAIRE PHOTOMETRIC TEST REPORT

Test:U:120.0V I:0.0830A P:9.300W PF:0.9339 Lamp Flux:732.214x1 lm		
NAME: LED Ceiling light	TYPE:N/A	WEIGHT:N/A
SPEC.:N/A	DIM.: N/A	SERIAL No.:N/A
MFR.: Maxim	SUR.:N/A	Shielding Angle:N/A

DATA OF LAMP		PHOTOMETRIC DATA Eff: 78.73 lm/W			
MODEL	RSZ200424501-10	I <sub>max</sub> (cd)	195.8	S/MH(C0/180)	1.37
NOMINAL POWER(W)		LOR(%)	100.0	S/MH(C90/270)	1.37
RATED VOLTAGE(V)	120	TOTAL FLUX(lm)	732.21	η UP, DN(C0-180)	0.1,49.7
NOMINAL FLUX(lm)	732.214	CIE CLASS	DIRECT	η UP, DN(C180-360)	0.0,50.2
LAMPS INSIDE	1	η up(%)	0.1	CIBSE SHR NOM	1.50
TEST VOLTAGE(V)	120	η down(%)	99.9	CIBSE SHR MAX	1.55



C Range: 0 - 360DEG  
 C Interval: 22.5DEG  
 Test Speed: 10.0deg/s  
 Temperature:24.9DEG  
 Operators:East  
 Test Date:2020-04-27

γ Range: 0 - 180DEG  
 γ Interval: 1.0DEG  
 Test System:EVERFINE GO-R5000\_V2 SYSTEM V2.0.351  
 Humidity:51%  
 Test Distance:2.502m [K=1.0000]  
 Remarks:

ZONAL FLUX DIAGRAM

ZONAL FLUX DIAGRAM:

γ	C0	C45	C90	C135	C180	C225	C270	C315	γ	Φ zone	Φ total	%lum, lamp
10	192.5	192.4	192.7	192.8	193.4	193.2	193.3	192.9	0- 10	18.52	18.52	2.53,2.53
20	186.1	185.7	186.2	186.8	187.6	187.7	187.6	186.9	10- 20	53.80	72.32	9.88,9.88
30	176.3	175.6	176.2	177.3	178.8	178.8	177.9	177.1	20- 30	84.24	156.6	21.4,21.4
40	163.3	162.3	162.8	164.7	166.2	166.3	165.4	164.3	30- 40	107.3	263.8	36,36
50	146.3	145.1	145.7	148.0	150.1	150.1	148.9	147.7	40- 50	120.9	384.8	52.5,52.5
60	124.9	123.4	123.7	126.3	127.8	127.8	126.4	125.1	50- 60	122.7	507.5	69.3,69.3
70	98.98	97.38	97.24	99.46	100.8	101.2	99.74	98.96	60- 70	111.9	619.3	84.6,84.6
80	59.94	58.71	57.27	57.19	57.69	58.15	58.75	59.65	70- 80	85.84	705.2	96.3,96.3
90	0.1569	0.2726	0.1269	0.0772	0.0214	0.0206	0.0217	0.0589	80- 90	26.33	731.5	99.9,99.9
100	0.0811	0.0797	0.0811	0.0786	0.0358	0.0352	0.0651	0.0348	90-100	0.0594	731.6	99.9,99.9
110	0.0836	0.0821	0.0855	0.0828	0.0567	0.0754	0.0841	0.0674	100-110	0.0737	731.6	99.9,99.9
120	0.0976	0.0908	0.0941	0.0955	0.0824	0.0916	0.0985	0.0828	110-120	0.0827	731.7	99.9,99.9
130	0.1281	0.1226	0.1284	0.1292	0.1056	0.1366	0.1105	0.1007	120-130	0.0927	731.8	99.9,99.9
140	0.1811	0.1879	0.1892	0.1895	0.1157	0.1196	0.1199	0.1149	130-140	0.1024	731.9	100,100
150	0.2488	0.2674	0.2688	0.2647	0.1229	0.1209	0.1308	0.1248	140-150	0.1088	732.0	100,100
160	0.3067	0.3045	0.3077	0.3152	0.1559	0.1546	0.1467	0.1390	150-160	0.0987	732.1	100,100
170	0.2935	0.2766	0.2791	0.2857	0.1796	0.1772	0.1924	0.1792	160-170	0.0658	732.2	100,100
180	0.2366	0.2203	0.2148	0.2356	0.2361	0.2293	0.2161	0.2232	170-180	0.0222	732.2	100,100
DEG	LUMINOUS INTENSITY:cd Less than 25% Percent = 10.4 %									UNIT:lm		

Conical surface Flux(90deg): 323.27 lm

%lum = 44.1%  
%lamp = 44.1%

Conical surface Flux(120deg): 507.49 lm

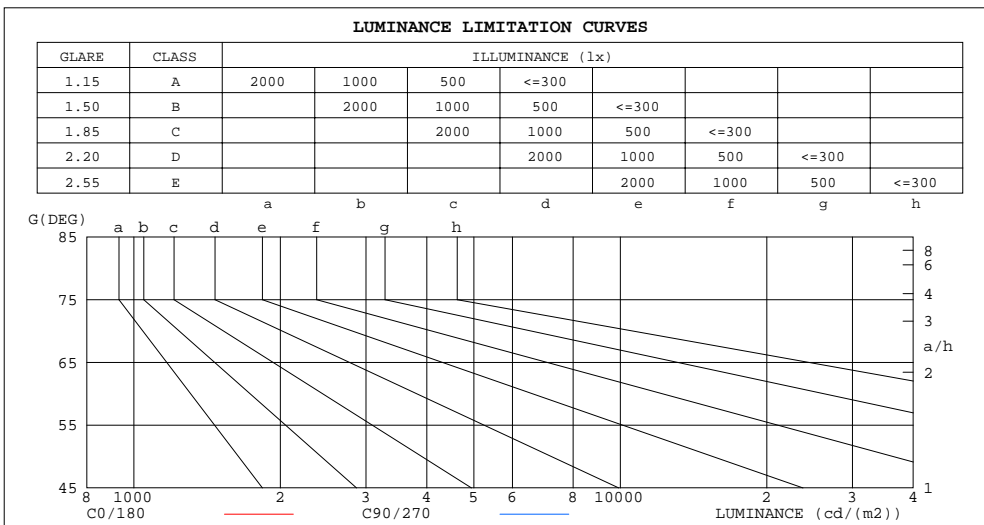
%lum = 69.3%  
%lamp = 69.3%

C Range: 0 - 360DEG  
C Interval: 22.5DEG  
Test Speed: 10.0deg/s  
Temperature:24.9DEG  
Operators:East  
Test Date:2020-04-27

γ Range: 0 - 180DEG  
γ Interval: 1.0DEG  
Test System:EVERFINE GO-R5000\_V2 SYSTEM V2.0.351  
Humidity:51%  
Test Distance:2.502m [K=1.0000]  
Remarks:

LUMINANCE LIMITATION CURVES

Test:U:120.0V I:0.0830A P:9.300W PF:0.9339 Lamp Flux:732.214x1 lm		
NAME: LED Ceiling light	TYPE:N/A	WEIGHT:N/A
SPEC.:N/A	DIM.: N/A	SERIAL No.:N/A
MFR.: Maxim	SUR.:N/A	Shielding Angle:N/A



LUMINANCE cd/(m2)		
G(DEG)	C0/180	C90/270
85	69174	61450
80	78171	74655
75	72498	70768
70	65538	64354
65	60299	59611
60	56584	56012
55	53732	53417
50	51551	51294
45	49754	49614

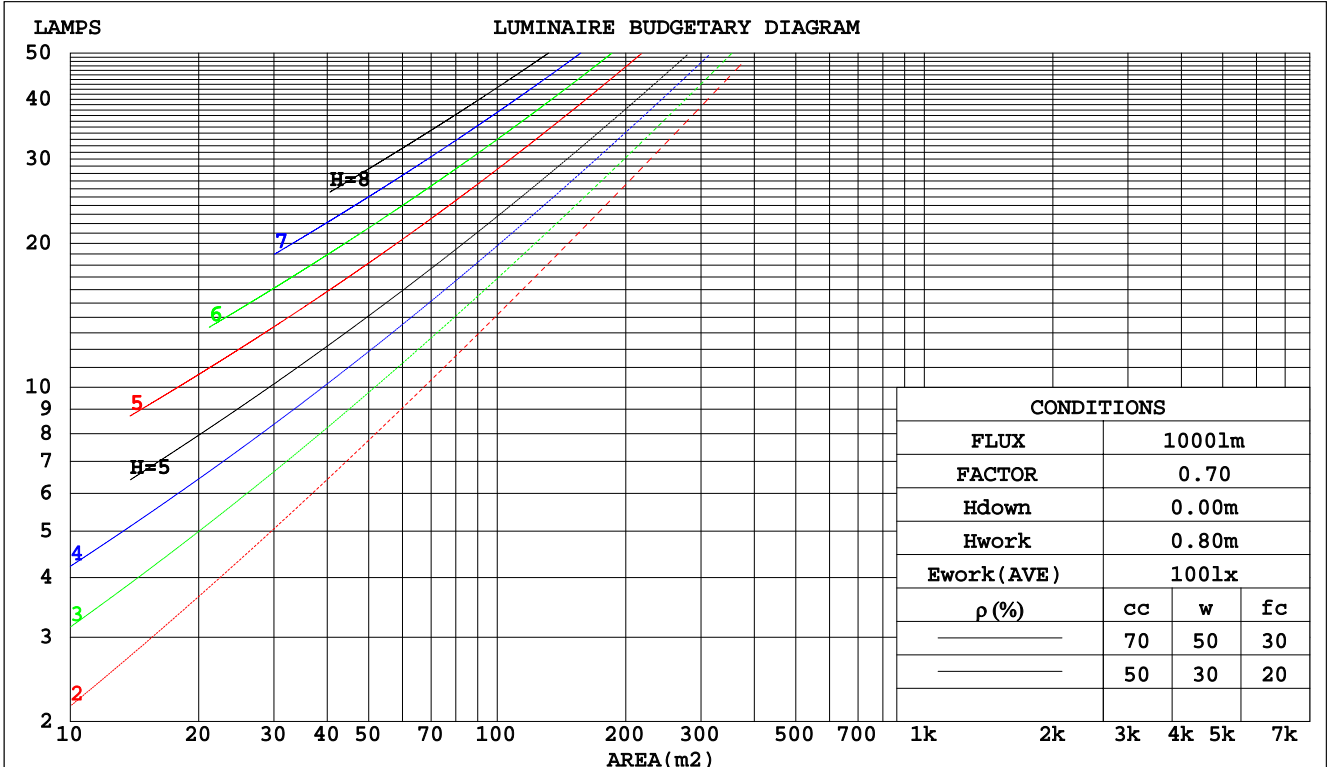
C Range: 0 - 360DEG  
 C Interval: 22.5DEG  
 Test Speed: 10.0deg/s  
 Temperature:24.9DEG  
 Operators:East  
 Test Date:2020-04-27

γ Range: 0 - 180DEG  
 γ Interval: 1.0DEG  
 Test System:EVERFINE GO-R5000\_V2 SYSTEM V2.0.351  
 Humidity:51%  
 Test Distance:2.502m [K=1.0000]  
 Remarks:

CU AND LUMINAIRE BUDGETARY ESTIMATE DIAGRAM

Test:U:120.0V I:0.0830A P:9.300W PF:0.9339 Lamp Flux:732.214x1 lm		
NAME: LED Ceiling light	TYPE:N/A	WEIGHT:N/A
SPEC.:N/A	DIM.: N/A	SERIAL No.:N/A
MFR.: Maxim	SUR.:N/A	Shielding Angle:N/A

pcc	80%			70%			50%			30%			10%			0
	50%	30%	10%	50%	30%	10%	50%	30%	10%	50%	30%	10%	50%	30%	10%	0
pw																
pfc	20%			20%			20%			20%			20%			0
RCR	RCR:Room Cavity Ratio      Coefficients of Utilization(CU)															
0.0	1.19	1.19	1.19	1.16	1.16	1.16	1.11	1.11	1.11	1.06	1.06	1.06	1.02	1.02	1.02	.00
1.0	1.01	.96	.92	.99	.94	.90	.94	.91	.87	.90	.87	.84	.87	.84	.82	.80
2.0	.86	.79	.72	.84	.77	.71	.81	.75	.69	.77	.72	.68	.74	.70	.66	.64
3.0	.75	.65	.58	.73	.64	.58	.70	.63	.57	.67	.61	.56	.64	.59	.54	.52
4.0	.65	.56	.48	.64	.55	.48	.61	.53	.47	.59	.52	.46	.57	.51	.46	.43
5.0	.58	.48	.41	.57	.48	.41	.54	.46	.40	.52	.45	.40	.50	.44	.39	.37
6.0	.52	.42	.35	.51	.42	.35	.49	.41	.35	.47	.40	.34	.45	.39	.34	.32
7.0	.47	.37	.31	.46	.37	.31	.44	.36	.30	.43	.35	.30	.41	.35	.30	.28
8.0	.42	.33	.27	.42	.33	.27	.40	.32	.27	.39	.32	.27	.38	.31	.26	.24
9.0	.39	.30	.24	.38	.30	.24	.37	.29	.24	.36	.29	.24	.35	.28	.24	.22
10.0	.36	.27	.22	.35	.27	.22	.34	.27	.22	.33	.26	.22	.32	.26	.21	.20



C Range: 0 - 360DEG  
 C Interval: 22.5DEG  
 Test Speed: 10.0deg/s  
 Temperature:24.9DEG  
 Operators:East  
 Test Date:2020-04-27

γ Range: 0 - 180DEG  
 γ Interval: 1.0DEG  
 Test System:EVERFINE GO-R5000\_V2 SYSTEM V2.0.351  
 Humidity:51%  
 Test Distance:2.502m [K=1.0000]  
 Remarks:

WEC AND CCEC

Test:U:120.0V I:0.0830A P:9.300W PF:0.9339 Lamp Flux:732.214x1 lm		
NAME: LED Ceiling light	TYPE:N/A	WEIGHT:N/A
SPEC.:N/A	DIM.: N/A	SERIAL No.:N/A
MFR.: Maxim	SUR.:N/A	Shielding Angle:N/A

ρcc	80%			70%			50%			30%			10%			0
ρw	50%	30%	10%	50%	30%	10%	50%	30%	10%	50%	30%	10%	50%	30%	10%	0
ρfc	20%			20%			20%			20%			20%			0
RCR	RCR:Room Cavity Ratio						Wall Exitance Coefficients(WEC)									
0.0																
1.0	.362	.206	.065	.355	.202	.064	.341	.196	.062	.329	.189	.061	.317	.184	.059	
2.0	.331	.181	.056	.324	.179	.055	.312	.174	.054	.301	.169	.053	.291	.165	.052	
3.0	.300	.160	.048	.294	.158	.047	.284	.154	.047	.274	.150	.046	.264	.146	.045	
4.0	.273	.142	.042	.268	.140	.041	.258	.137	.041	.249	.134	.040	.241	.131	.040	
5.0	.249	.127	.037	.245	.126	.037	.236	.123	.036	.228	.120	.036	.221	.118	.035	
6.0	.229	.115	.033	.225	.114	.033	.217	.111	.032	.210	.109	.032	.203	.107	.032	
7.0	.211	.104	.030	.208	.103	.029	.201	.102	.029	.195	.100	.029	.189	.098	.029	
8.0	.196	.096	.027	.193	.095	.027	.187	.093	.027	.181	.092	.026	.176	.090	.026	
9.0	.183	.088	.025	.180	.088	.025	.174	.086	.024	.169	.085	.024	.165	.084	.024	
10.0	.171	.082	.023	.168	.081	.023	.164	.080	.023	.159	.079	.022	.155	.078	.022	

ρcc	80%			70%			50%			30%			10%			0
ρw	50%	30%	10%	50%	30%	10%	50%	30%	10%	50%	30%	10%	50%	30%	10%	0
ρfc	20%			20%			20%			20%			20%			0
RCR	RCR:Room Cavity Ratio						Ceiling Cavity Exitance Coefficients(CCEC)									
0.0	.191	.191	.191	.163	.163	.163	.112	.112	.112	.064	.064	.064	.020	.020	.020	
1.0	.185	.156	.131	.158	.134	.113	.108	.092	.078	.062	.053	.045	.020	.017	.015	
2.0	.178	.132	.094	.153	.114	.081	.105	.079	.057	.060	.046	.033	.019	.015	.011	
3.0	.171	.115	.071	.147	.099	.061	.101	.069	.043	.058	.040	.025	.019	.013	.008	
4.0	.163	.102	.056	.140	.088	.048	.096	.062	.034	.056	.036	.020	.018	.012	.007	
5.0	.156	.092	.045	.134	.080	.039	.092	.056	.028	.053	.033	.016	.017	.011	.005	
6.0	.148	.084	.038	.127	.073	.033	.088	.051	.023	.051	.030	.014	.016	.010	.005	
7.0	.141	.077	.032	.121	.067	.028	.084	.047	.020	.049	.028	.012	.016	.009	.004	
8.0	.134	.071	.028	.115	.062	.025	.080	.043	.017	.046	.026	.010	.015	.008	.003	
9.0	.127	.066	.025	.110	.058	.022	.076	.040	.015	.044	.024	.009	.014	.008	.003	
10.0	.121	.062	.022	.105	.054	.020	.073	.038	.014	.042	.022	.008	.014	.007	.003	

C Range: 0 - 360DEG  
 C Interval: 22.5DEG  
 Test Speed: 10.0deg/s  
 Temperature:24.9DEG  
 Operators:East  
 Test Date:2020-04-27

γ Range: 0 - 180DEG  
 γ Interval: 1.0DEG  
 Test System:EVERFINE GO-R5000\_V2 SYSTEM V2.0.351  
 Humidity:51%  
 Test Distance:2.502m [K=1.0000]  
 Remarks:

UGR(Unified Glare Rating) Table

Test:U:120.0V I:0.0830A P:9.300W PF:0.9339 Lamp Flux:732.214x1 lm										
NAME: LED Ceiling light					TYPE:N/A			WEIGHT:N/A		
SPEC.:N/A					DIM.: N/A			SERIAL No.:N/A		
MFR.: Maxim					SUR.:N/A			Shielding Angle:N/A		
ceiling/cavity	0.7	0.7	0.5	0.5	0.3	0.7	0.7	0.5	0.5	0.3
walls	0.5	0.3	0.5	0.3	0.3	0.5	0.3	0.5	0.3	0.3
working plane	0.2	0.2	0.2	0.2	0.2	0.2	0.2	0.2	0.2	0.2
Room dimensions	Viewed crosswise					Viewed endwise				
x = 2H y = 2H	26.9	28.6	27.2	28.8	29.0	26.9	28.5	27.1	28.7	28.9
3H	29.2	30.7	29.5	31.0	31.2	29.1	30.7	29.4	30.9	31.2
4H	30.4	31.8	30.7	32.1	32.3	30.3	31.7	30.6	32.0	32.3
6H	31.4	32.8	31.7	33.0	33.3	31.2	32.6	31.6	32.9	33.2
8H	31.8	33.1	32.1	33.4	33.7	31.6	32.9	31.9	33.2	33.5
12H	32.0	33.3	32.4	33.6	33.9	31.8	33.1	32.2	33.4	33.7
4H 2H	27.7	29.2	28.1	29.5	29.7	27.7	29.2	28.0	29.4	29.7
3H	30.2	31.5	30.6	31.8	32.1	30.2	31.5	30.5	31.8	32.1
4H	31.5	32.7	31.9	33.0	33.4	31.4	32.6	31.8	33.0	33.3
6H	32.7	33.8	33.1	34.1	34.5	32.6	33.6	33.0	34.0	34.4
8H	33.2	34.2	33.6	34.5	34.9	33.0	34.0	33.4	34.4	34.8
12H	33.5	34.4	33.9	34.8	35.2	33.3	34.2	33.7	34.6	35.0
8H 4H	32.0	33.0	32.4	33.4	33.8	32.0	33.0	32.4	33.3	33.7
6H	33.4	34.3	33.9	34.7	35.1	33.3	34.1	33.7	34.5	35.0
8H	34.0	34.7	34.4	35.2	35.6	33.8	34.6	34.3	35.0	35.5
12H	34.4	35.0	34.9	35.5	36.0	34.2	34.8	34.7	35.3	35.8
12H 4H	32.1	33.0	32.5	33.4	33.8	32.0	33.0	32.5	33.3	33.8
6H	33.6	34.3	34.0	34.7	35.2	33.4	34.2	33.9	34.6	35.1
8H	34.2	34.8	34.7	35.3	35.8	34.0	34.7	34.5	35.1	35.6
Variations with the observer position at spacings:										
S = 1.0H	+ 0.1 / - 0.1					+ 0.1 / - 0.1				
1.5H	+ 0.2 / - 0.2					+ 0.2 / - 0.2				
2.0H	+ 0.1 / - 0.3					+ 0.1 / - 0.3				

CIE Pub.117 Corrected 732.2 lm Total Lamp Luminous Flux. (8log(F/F0) = -1.1)

C Range: 0 - 360DEG  
 C Interval: 22.5DEG  
 Test Speed: 10.0deg/s  
 Temperature:24.9DEG  
 Operators:East  
 Test Date:2020-04-27

γ Range: 0 - 180DEG  
 γ Interval: 1.0DEG  
 Test System:EVERFINE GO-R5000\_V2 SYSTEM V2.0.351  
 Humidity:51%  
 Test Distance:2.502m [K=1.0000]  
 Remarks:

**UTILIZATION FACTORS TABLE**

Test:U:120.0V I:0.0830A P:9.300W PF:0.9339 Lamp Flux:732.214x1 lm		
NAME: LED Ceiling light	TYPE:N/A	WEIGHT:N/A
SPEC.:N/A	DIM.: N/A	SERIAL No.:N/A
MFR.: Maxim	SUR.:N/A	Shielding Angle:N/A

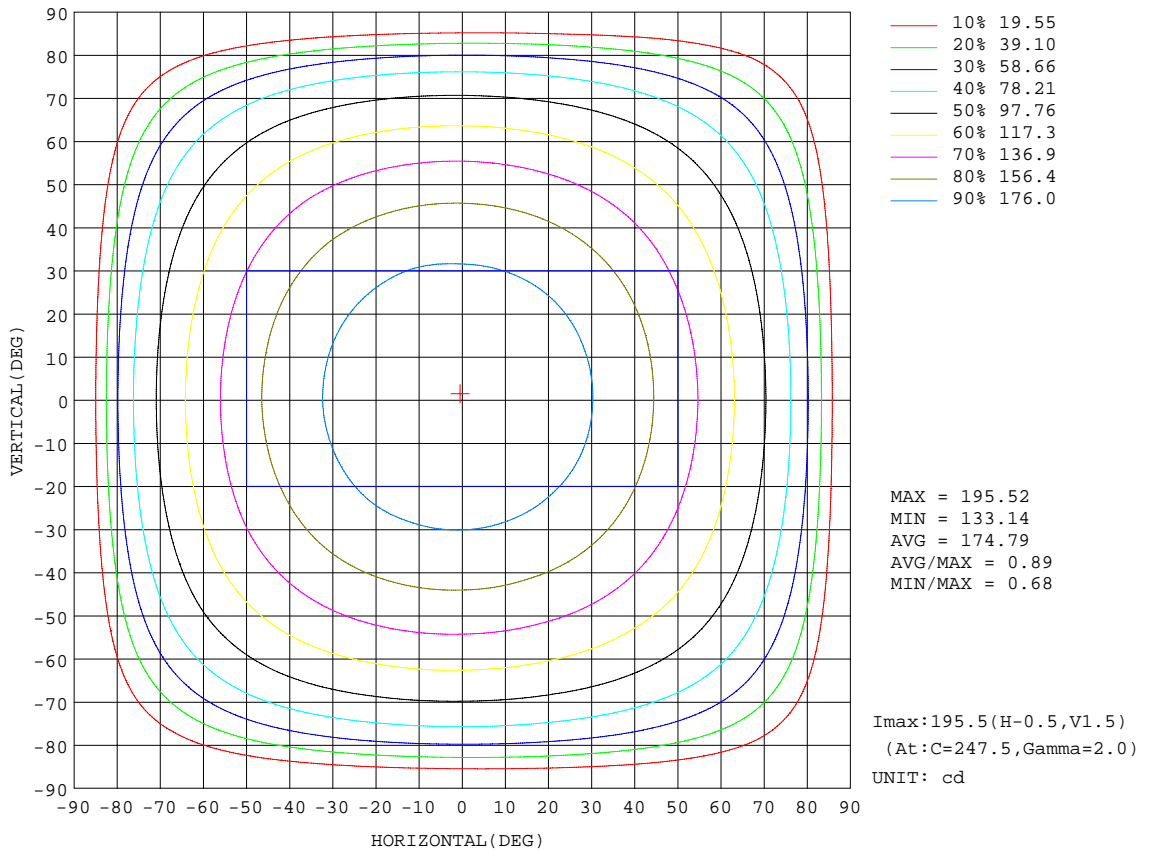
REFLECTANCE										
Ceiling	0.8	0.8	0.8	0.7	0.7	0.7	0.5	0.5	0.5	0
Walls	0.7	0.5	0.3	0.7	0.5	0.3	0.7	0.5	0.3	0
Working plane	0.2	0.2	0.2	0.2	0.2	0.2	0.2	0.2	0.2	0
ROOM INDEX	UTILIZATION FACTORS(PERCENT) $k(RI) \times RCR = 5$									
k = 0.60	53	41	33	52	40	33	51	40	33	26
0.80	63	50	42	62	50	42	60	49	41	34
1.00	71	59	50	70	58	50	67	60	50	42
1.25	78	66	58	77	66	58	74	64	57	49
1.50	83	72	64	82	71	64	78	69	63	54
2.00	91	81	74	89	80	73	85	77	71	63
2.50	95	86	79	93	85	79	89	82	77	68
3.00	99	91	85	97	90	84	93	87	81	72
4.00	104	97	92	101	95	90	97	92	88	78
5.00	107	101	96	104	99	95	99	95	92	82
ROOM INDEX	UF(total)									Direct
According to DIN EN 13032-2 2004			Suspended				SHRNOM = 1.25			

C Range: 0 - 360DEG  
 C Interval: 22.5DEG  
 Test Speed: 10.0deg/s  
 Temperature:24.9DEG  
 Operators:East  
 Test Date:2020-04-27

$\gamma$  Range: 0 - 180DEG  
 $\gamma$  Interval: 1.0DEG  
 Test System:EVERFINE GO-R5000\_V2 SYSTEM V2.0.351  
 Humidity:51%  
 Test Distance:2.502m [K=1.0000]  
 Remarks:

**ISOCANDELA DIAGRAM**

Test:U:120.0V I:0.0830A P:9.300W PF:0.9339 Lamp Flux:732.214x1 lm		
NAME: LED Ceiling light	TYPE:N/A	WEIGHT:N/A
SPEC.:N/A	DIM.: N/A	SERIAL No.:N/A
MFR.: Maxim	SUR.:N/A	Shielding Angle:N/A



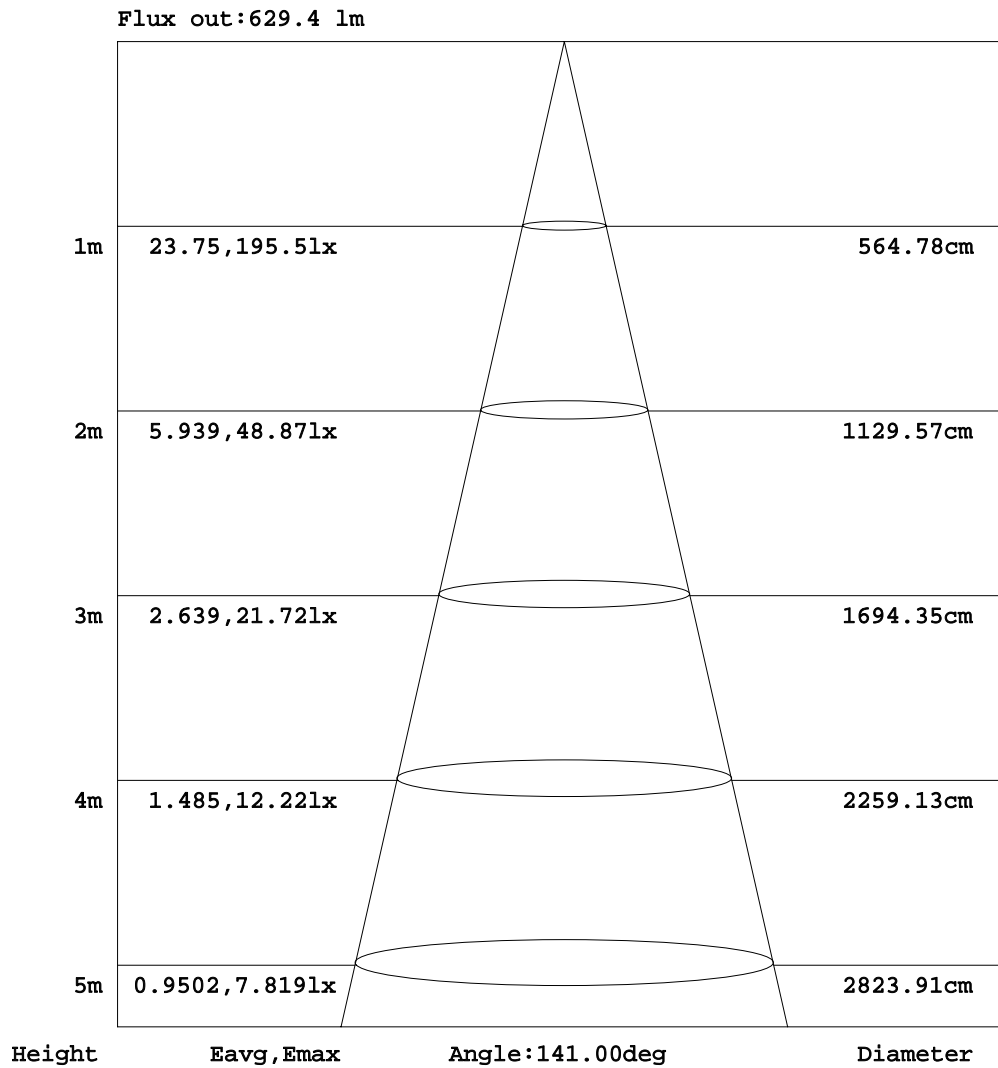
C Range: 0 - 360DEG  
 C Interval: 22.5DEG  
 Test Speed: 10.0deg/s  
 Temperature:24.9DEG  
 Operators:East  
 Test Date:2020-04-27

γ Range: 0 - 180DEG  
 γ Interval: 1.0DEG  
 Test System:EVERFINE GO-R5000\_V2 SYSTEM V2.0.351  
 Humidity:51%  
 Test Distance:2.502m [K=1.0000]  
 Remarks:



AAI Figure

Test:U:120.0V I:0.0830A P:9.300W PF:0.9339 Lamp Flux:732.214x1 lm		
NAME: LED Ceiling light	TYPE:N/A	WEIGHT:N/A
SPEC.:N/A	DIM.: N/A	SERIAL No.:N/A
MFR.: Maxim	SUR.:N/A	Shielding Angle:N/A



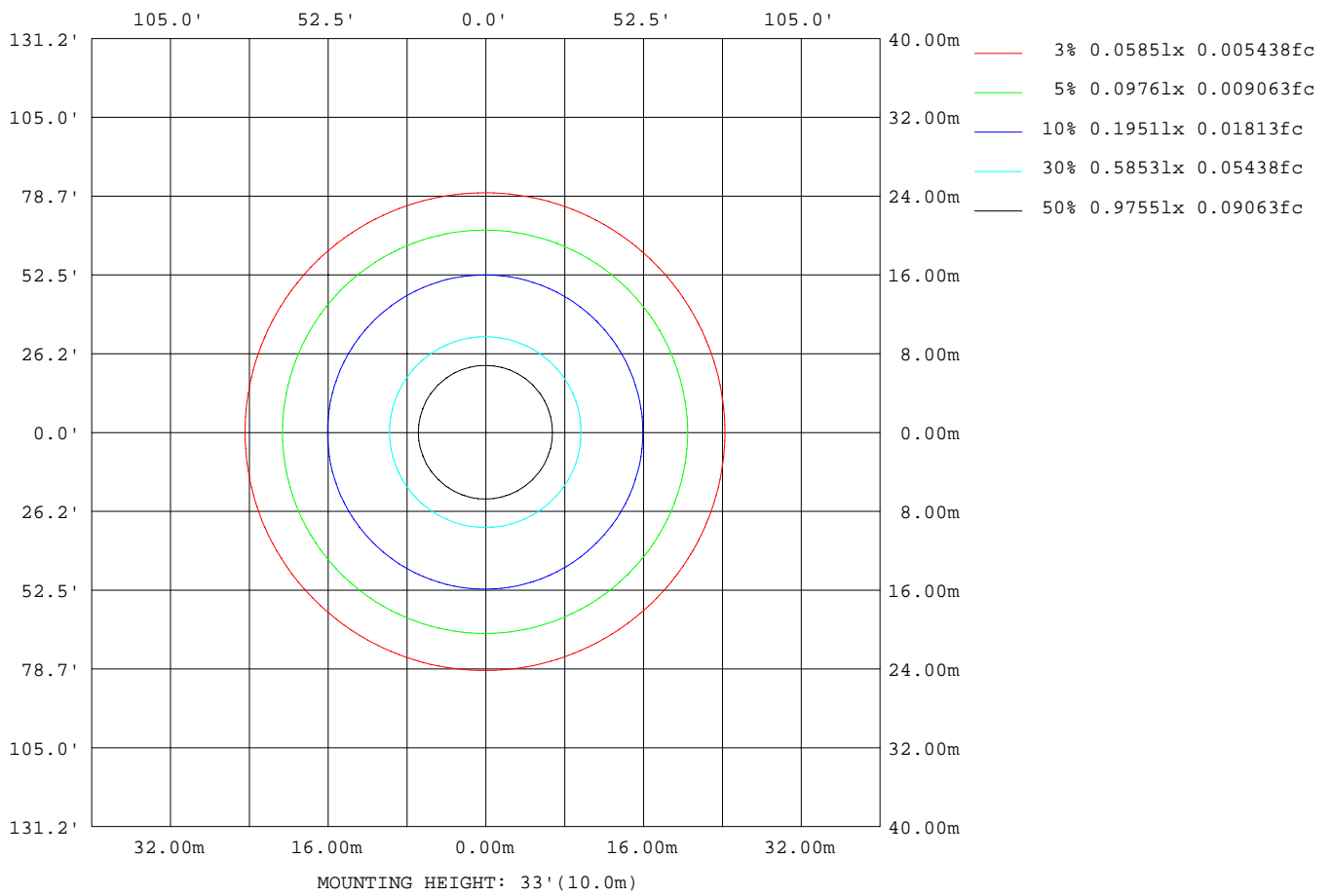
Note:The Curves indicate the illuminated area and the average illumination when the luminaire is at different distance.

C Range: 0 - 360DEG  
 C Interval: 22.5DEG  
 Test Speed: 10.0deg/s  
 Temperature:24.9DEG  
 Operators:East  
 Test Date:2020-04-27

γ Range: 0 - 180DEG  
 γ Interval: 1.0DEG  
 Test System:EVERFINE GO-R5000\_V2 SYSTEM V2.0.351  
 Humidity:51%  
 Test Distance:2.502m [K=1.0000]  
 Remarks:

**ISOLUX DIAGRAM**

Test:U:120.0V I:0.0830A P:9.300W PF:0.9339 Lamp Flux:732.214x1 lm		
NAME: LED Ceiling light	TYPE:N/A	WEIGHT:N/A
SPEC.:N/A	DIM.: N/A	SERIAL No.:N/A
MFR.: Maxim	SUR.:N/A	Shielding Angle:N/A



C Range: 0 - 360DEG  
 C Interval: 22.5DEG  
 Test Speed: 10.0deg/s  
 Temperature:24.9DEG  
 Operators:East  
 Test Date:2020-04-27

γ Range: 0 - 180DEG  
 γ Interval: 1.0DEG  
 Test System:EVERFINE GO-R5000\_V2 SYSTEM V2.0.351  
 Humidity:51%  
 Test Distance:2.502m [K=1.0000]  
 Remarks:

**LED Avg.L Report**

Test:U:120.0V I:0.0830A P:9.300W PF:0.9339 Lamp Flux:732.214x1 lm		
NAME: LED Ceiling light	TYPE:N/A	WEIGHT:N/A
SPEC.:N/A	DIM.: N/A	SERIAL No.:N/A
MFR.: Maxim	SUR.:N/A	Shielding Angle:N/A

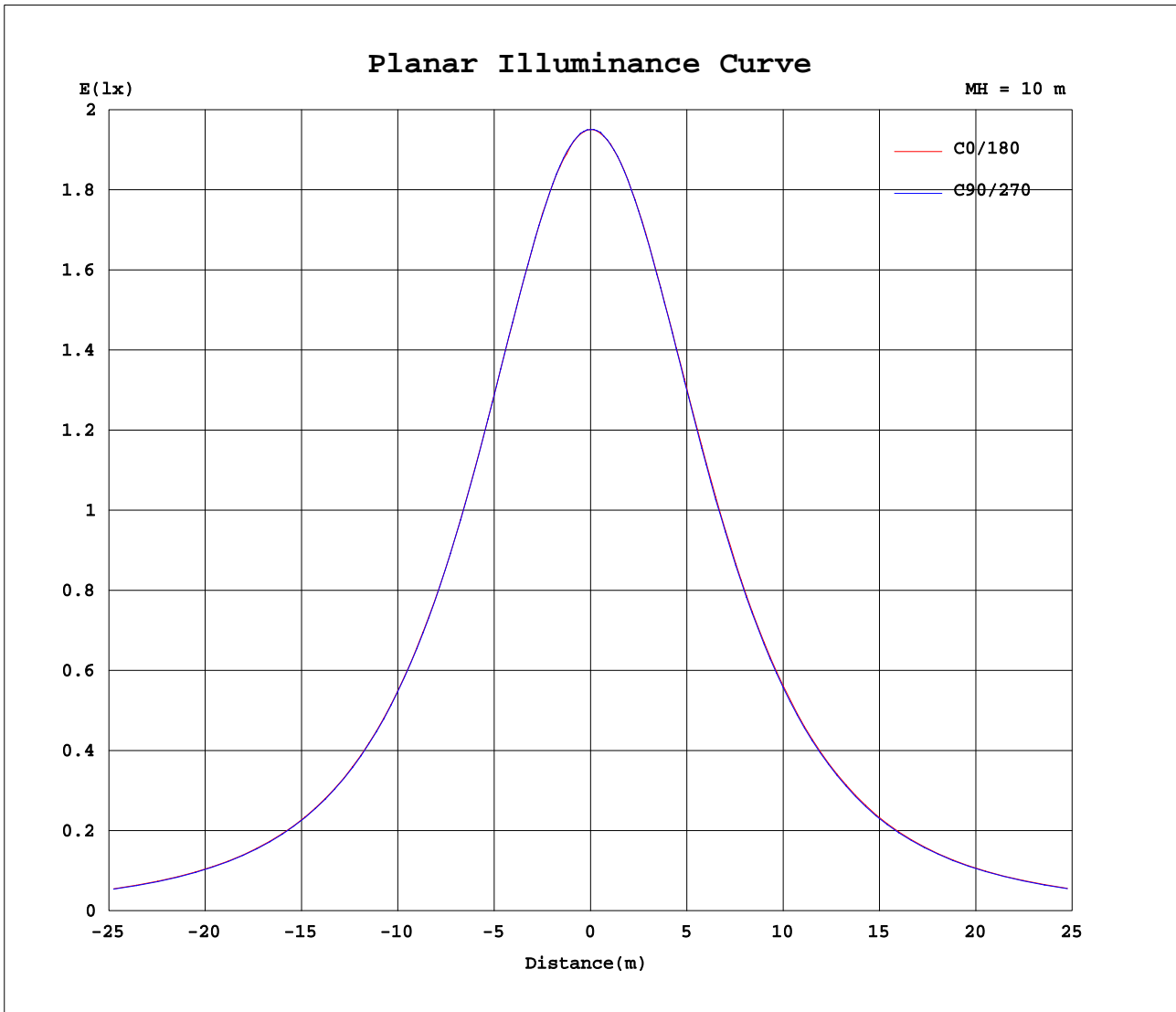
AvgL	cd/m2
L_0~180(65)av	60989
L_0~180(75)av	72716
L_0~180(85)av	59670
L_90~270(65)av	60317
L_90~270(75)av	71694
L_90~270(85)av	58214
L_45(65)av	60593
L_45(75)av	72142
L_45(85)av	59099

Standard: GB/T 29293-2012

C Range: 0 - 360DEG  
 C Interval: 22.5DEG  
 Test Speed: 10.0deg/s  
 Temperature:24.9DEG  
 Operators:East  
 Test Date:2020-04-27

γ Range: 0 - 180DEG  
 γ Interval: 1.0DEG  
 Test System:EVERFINE GO-R5000\_V2 SYSTEM V2.0.351  
 Humidity:51%  
 Test Distance:2.502m [K=1.0000]  
 Remarks:

Planar Illuminance Curve



C Range: 0 - 360DEG  
 C Interval: 22.5DEG  
 Test Speed: 10.0deg/s  
 Temperature: 24.9DEG  
 Operators: East  
 Test Date: 2020-04-27

$\gamma$  Range: 0 - 180DEG  
 $\gamma$  Interval: 1.0DEG  
 Test System: EVERFINE GO-R5000\_V2 SYSTEM V2.0.351  
 Humidity: 51%  
 Test Distance: 2.502m [K=1.0000]  
 Remarks:

LUMINOUS DISTRIBUTION INTENSITY DATA

Test:U:120.0V I:0.0830A P:9.300W PF:0.9339 Lamp Flux:732.214x1 lm		
NAME: LED Ceiling light	TYPE:N/A	WEIGHT:N/A
SPEC.:N/A	DIM.: N/A	SERIAL No.:N/A
MFR.: Maxim	SUR.:N/A	Shielding Angle:N/A

Table--1

UNIT: cd

C( DEG) γ (DEG)	0	22.5	45	67.5	90	112.5	135	157.5	180	202.5	225	247.5	270	292.5	315	337.5			
0	195	195	195	195	195	195	195	195	195	195	195	195	195	195	195	195			
5	194	194	194	194	195	194	194	194	195	195	195	195	195	194	194	195			
10	193	192	192	193	193	193	193	193	193	193	193	193	193	193	193	193			
15	190	190	189	190	190	190	190	191	191	191	191	191	191	190	190	190			
20	186	186	186	186	186	186	187	187	188	188	188	188	188	187	187	187			
25	182	181	181	181	182	182	182	183	184	184	184	184	183	183	182	182			
30	176	176	176	176	176	176	177	178	179	179	179	178	178	177	177	177			
35	170	170	169	169	170	170	171	172	173	173	173	173	172	171	171	171			
40	163	163	162	162	163	164	165	165	166	166	166	166	165	165	164	164			
45	155	155	155	154	155	156	157	158	159	159	159	158	158	157	156	156			
50	146	146	145	145	146	147	148	149	150	150	150	150	149	148	148	147			
55	136	135	135	135	135	136	138	139	139	140	139	139	138	137	136	136			
60	125	124	123	123	124	125	126	128	128	128	128	127	126	125	125	125			
65	113	112	111	111	111	112	114	115	115	115	115	115	114	113	113	112			
70	99.0	98.2	97.4	96.9	97.2	97.9	99.5	101	101	101	101	100	99.7	99.2	99.0	98.6			
75	82.9	82.3	81.3	80.7	80.9	81.2	82.2	83.1	83.4	83.7	83.9	83.3	82.9	82.5	82.5	82.5			
80	59.9	59.7	58.7	57.7	57.3	57.2	57.2	56.9	57.7	57.9	58.2	58.3	58.7	59.1	59.6	60.3			
85	26.6	27.1	26.0	24.8	23.7	22.3	21.0	18.9	19.3	19.0	19.4	20.2	21.1	22.3	24.6	26.4			
90	0.16	0.23	0.27	0.20	0.13	0.10	0.08	0.07	0.02	0.02	0.02	0.02	0.02	0.02	0.06	0.11			
95	0.07	0.07	0.07	0.07	0.07	0.07	0.07	0.07	0.03	0.03	0.03	0.03	0.03	0.03	0.03	0.03			
100	0.08	0.08	0.08	0.08	0.08	0.08	0.08	0.08	0.04	0.04	0.04	0.06	0.07	0.06	0.03	0.04			
105	0.08	0.08	0.08	0.08	0.08	0.08	0.08	0.08	0.05	0.05	0.05	0.07	0.07	0.07	0.06	0.05			
110	0.08	0.08	0.08	0.08	0.09	0.08	0.08	0.08	0.06	0.06	0.08	0.08	0.08	0.08	0.07	0.06			
115	0.09	0.09	0.09	0.08	0.09	0.09	0.09	0.08	0.07	0.07	0.08	0.09	0.09	0.08	0.07	0.07			
120	0.10	0.10	0.09	0.09	0.09	0.10	0.10	0.09	0.08	0.08	0.09	0.10	0.10	0.09	0.08	0.08			
125	0.11	0.11	0.10	0.11	0.11	0.11	0.11	0.11	0.10	0.10	0.10	0.11	0.11	0.10	0.09	0.09			
130	0.13	0.13	0.12	0.12	0.13	0.13	0.13	0.12	0.11	0.11	0.11	0.14	0.11	0.11	0.11	0.10			
135	0.15	0.15	0.15	0.15	0.16	0.16	0.15	0.15	0.11	0.11	0.11	0.12	0.12	0.11	0.11	0.11			
140	0.18	0.18	0.19	0.18	0.19	0.19	0.19	0.18	0.12	0.11	0.12	0.12	0.12	0.12	0.11	0.11			
145	0.22	0.22	0.23	0.24	0.24	0.24	0.23	0.22	0.12	0.12	0.12	0.13	0.13	0.12	0.12	0.11			
150	0.25	0.26	0.27	0.27	0.27	0.27	0.26	0.25	0.12	0.12	0.12	0.13	0.13	0.13	0.12	0.12			
155	0.28	0.29	0.29	0.29	0.30	0.30	0.30	0.29	0.14	0.13	0.14	0.14	0.14	0.14	0.13	0.15			
160	0.31	0.31	0.30	0.31	0.31	0.31	0.32	0.30	0.16	0.15	0.15	0.15	0.15	0.15	0.14	0.16			
165	0.30	0.30	0.30	0.30	0.31	0.31	0.31	0.30	0.17	0.17	0.16	0.16	0.17	0.17	0.16	0.17			
170	0.29	0.28	0.28	0.27	0.28	0.28	0.29	0.29	0.18	0.18	0.18	0.17	0.19	0.18	0.18	0.19			
175	0.28	0.27	0.26	0.25	0.25	0.26	0.27	0.28	0.21	0.21	0.20	0.19	0.20	0.20	0.21	0.22			
180	0.24	0.23	0.22	0.21	0.21	0.22	0.24	0.24	0.24	0.24	0.23	0.22	0.22	0.22	0.22	0.24			

C Range: 0 - 360DEG  
 C Interval: 22.5DEG  
 Test Speed: 10.0deg/s  
 Temperature:24.9DEG  
 Operators:East  
 Test Date:2020-04-27

γ Range: 0 - 180DEG  
 γ Interval: 1.0DEG  
 Test System:EVERFINE GO-R5000\_V2 SYSTEM V2.0.351  
 Humidity:51%  
 Test Distance:2.502m [K=1.0000]  
 Remarks: