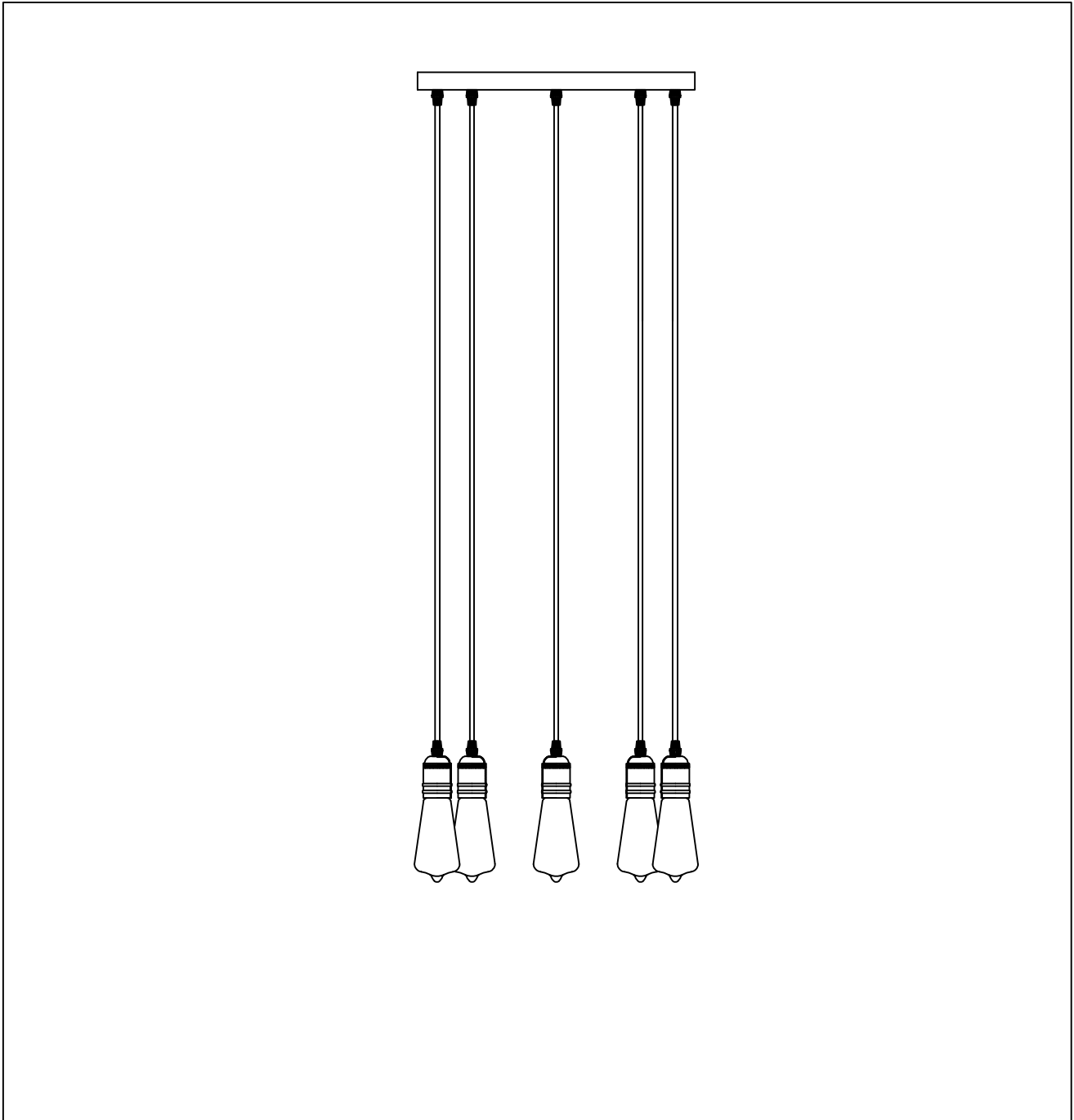




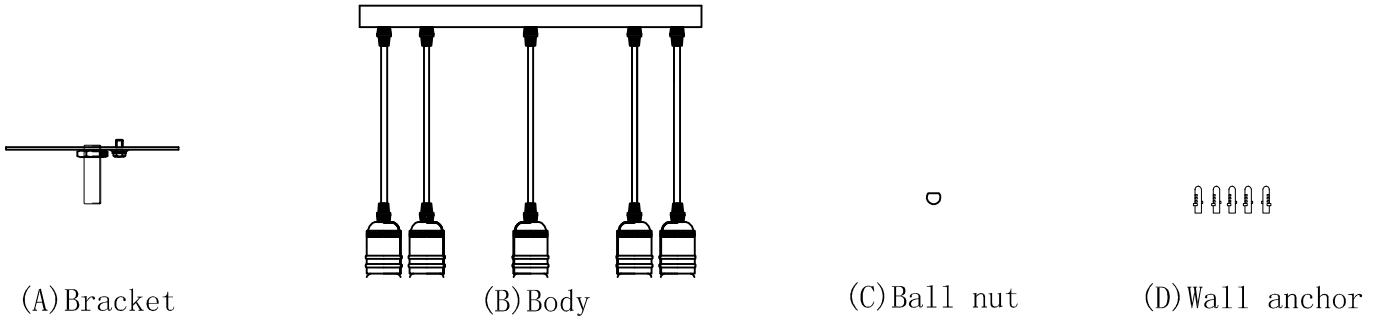
PRODUCT NAME: Early Electric 5LT Pendant  
NUMBER: 12125

Please consult your electrician for Hang fixture and wiring.

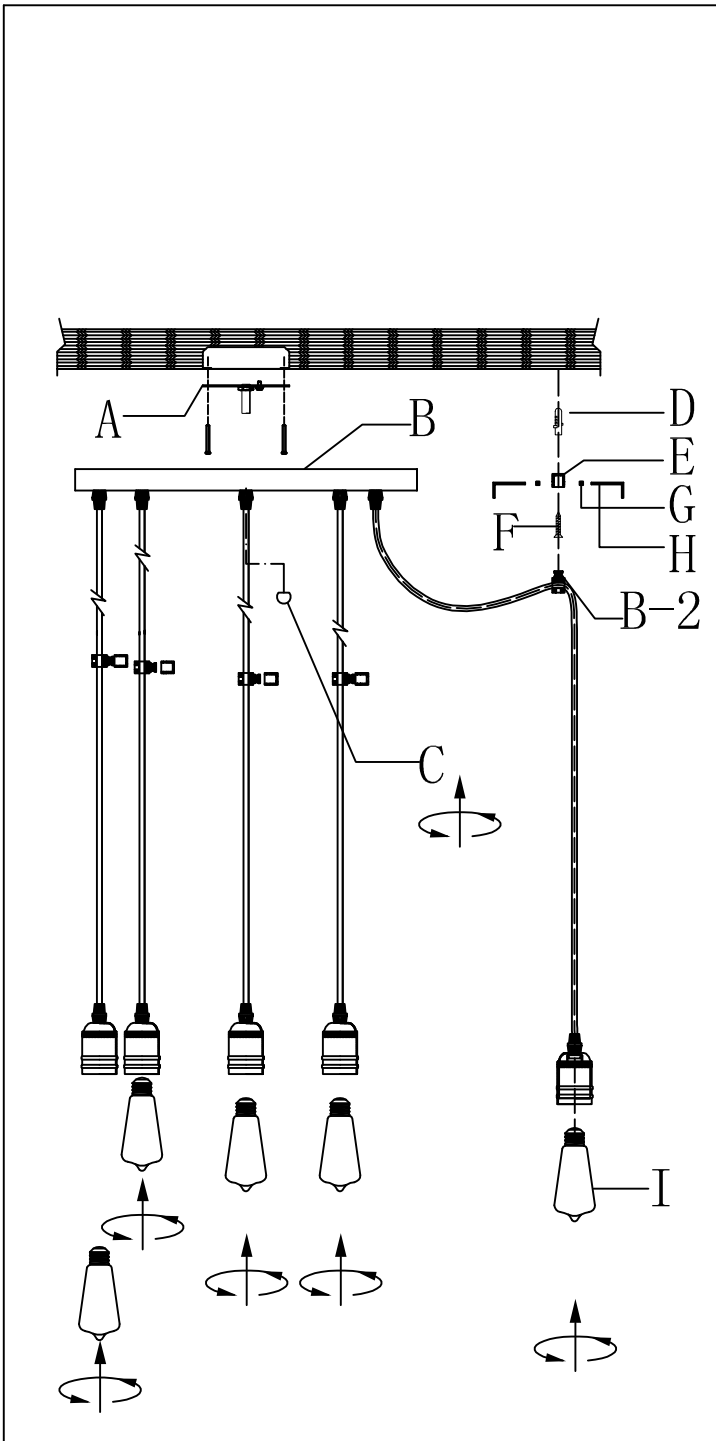


Bulb(Not included):5\*MB 60W

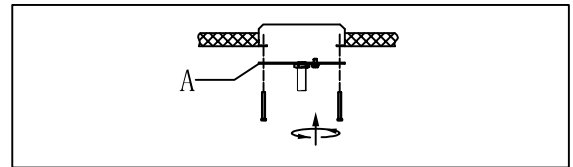
**IMPORTANT:** Turn off power at the main fuse or circuit breaker box before starting installation



**Locate all hardware & components before discarding packaging**

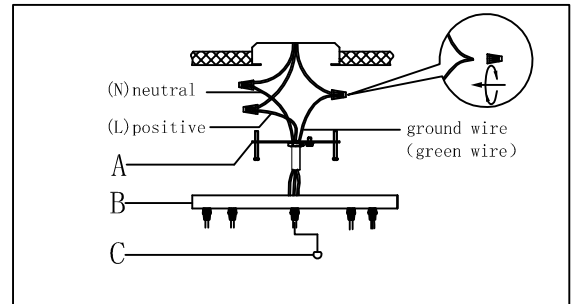


1.)



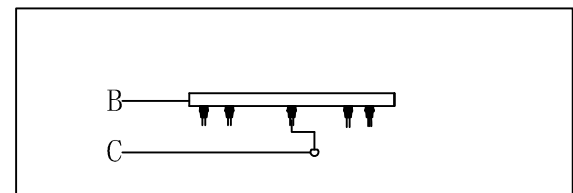
**Step. 1:** Remove mounting bracket (A) from fixture and install to electrical box.

2.)



**Step. 2:** Wire fixture to wires in outlet box. Copper/Green wire is for Ground.

3.)



**Step. 3:** Install fixture to bracket and tighten ball nuts (C) on the canopy to secure.

**Cleaning & Care:**

Clean with soft cloth and a mild detergent.  
Do not use abrasive cleaner.

IMPORTANT: Turn off power at the main fuse or circuit breaker box before starting installation



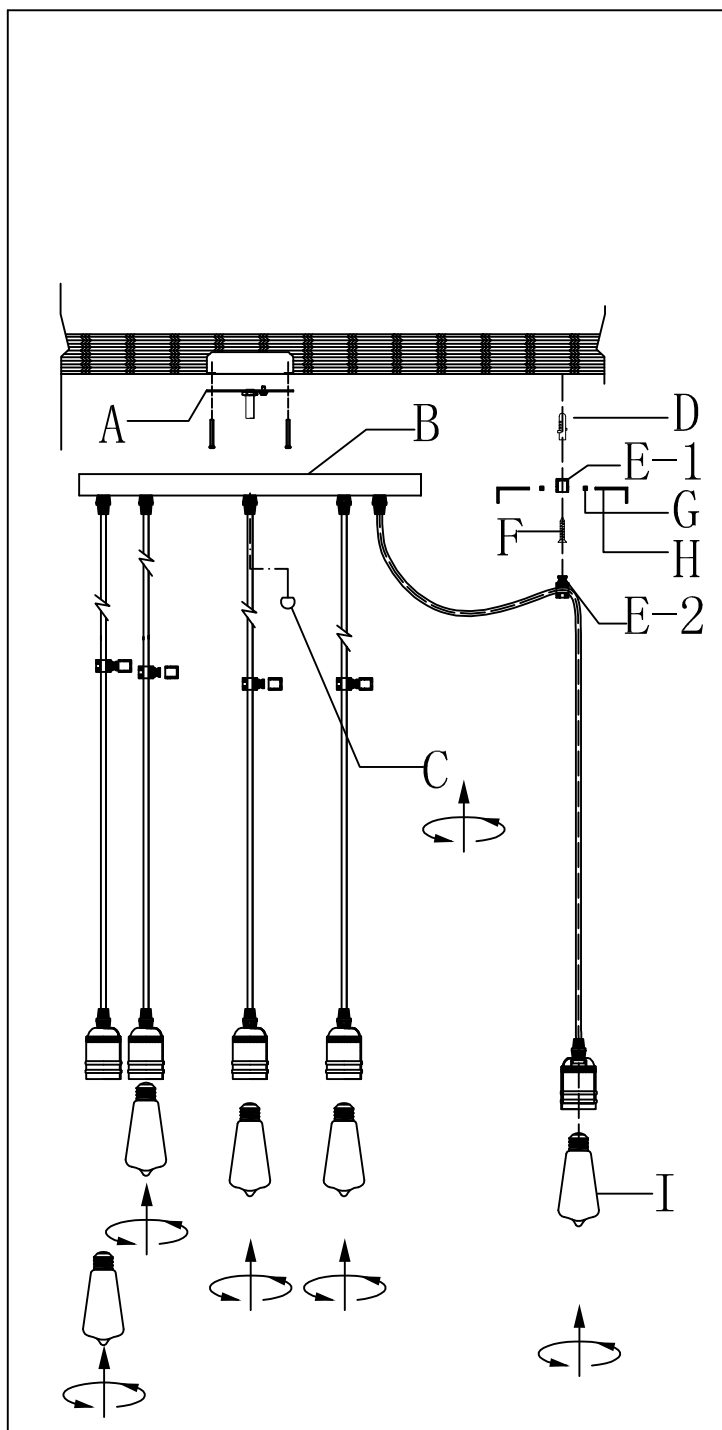
(E-1) Wire holder cap (F) Tapping screw

(G) Screw

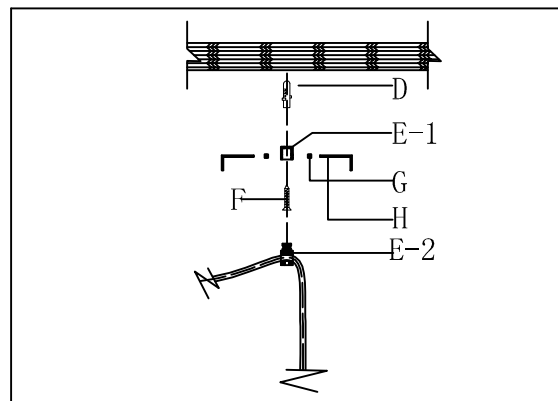
(H) Wrench

(I) Bulb

Locate all hardware & components before discarding packaging

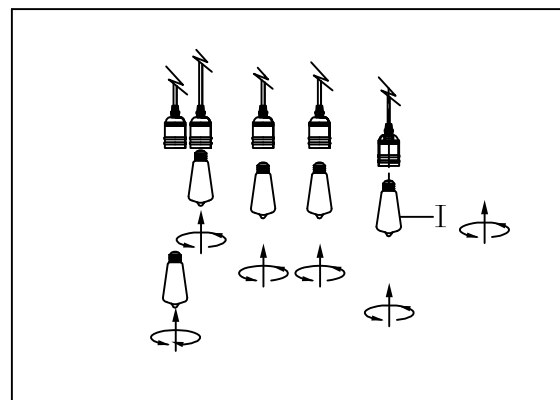


4.)



Step. 4: Install Wall plug(D) into the ceiling, And use the tapping screw(F) to lock the wire holder cap(E-1). Then install wire holder (E-2) into cap, and use wrench(F) to tighten screw(G) to lock wire holder in the cap.

5.)



Step. 5: Install the bulb(I).

### Cleaning & Care:

Clean with soft cloth and a mild detergent.  
Do not use abrasive cleaner.