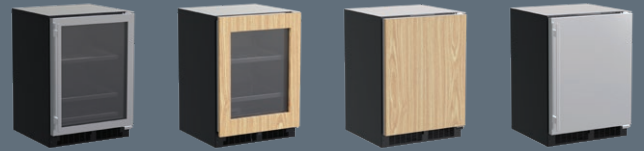


Fresh Living Tip

If you live in a household of beer drinkers, wine lovers and snackers, this model offers the most versatility between wine, beverage and food storage.

FINISH OPTIONS



24" Marvel Beverage Center with 3-in-1 Convertible Shelves

MLBV224

Storage Adaptability

- 5.5 cu. ft. capacity stores up to (162) 12-oz cans and/or 18 wine bottles
- (2) 3-in-1 Split Convertible Shelves — cantilevered glass shelving converts to wine racks with a Vibration Neutralization System or a split wine rack and flat storage all in one
- Roller-glide 4-bottle wine rack

Cooling Performance

- Dynamic cooling technology delivers rapid cool down, frost-free operation and precise temperature stability
- Proprietary shelving design allows for cool air to circulate throughout cabinet for temperature consistency from top to bottom
- Thermal-efficient cabinet insulates cooling environment and conserves energy while maximizing capacity
- Argon-filled, UV-resistant tinted dual pane glass door protects contents from damaging ultraviolet light and helps conserve energy
- Sound-buffering design

Convenient Controls

- Multifunction controls allow you to select a precise cabinet temperature from 34° F to 60° F
- Features easy-to-use settings and options

Fit & Finish

- Elegant midnight black interior and arctic white LED interior lighting
- Solid black shelf fronts
- Reversible door allows for right or left swing for adaptable installation
- Black toe kick adjustable to 4" with leveling legs

Warranty

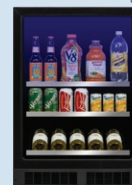
- 1-year parts and labor warranty and 5-year sealed system parts warranty



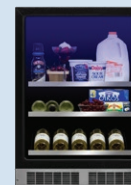
Featuring two 3-in-1 Split Convertible Shelves, this dynamic beverage center stores beverages, food and wine in as many as six different configurations. Capable of storing 162 12-oz cans or 18 wine bottles, its two cantilevered glass shelves convert to wine storage with a Vibration Neutralization System plus a glide-out wine rack stores an additional four bottles.

3-in-1 Convertible Shelf

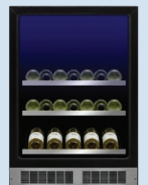
Glass Shelving



Glass Shelving and Wine Rack



Wine Rack



Choose glass shelving, wine rack with a Vibration Neutralization System or all-in-one configuration, allowing storage for 3, 4, or 7 wine bottles.

DOOR STYLE

MODEL NUMBER

Stainless Steel Frame Glass

MLBV224-SG01A

Panel Ready Frame Glass

MLBV224-IG01A

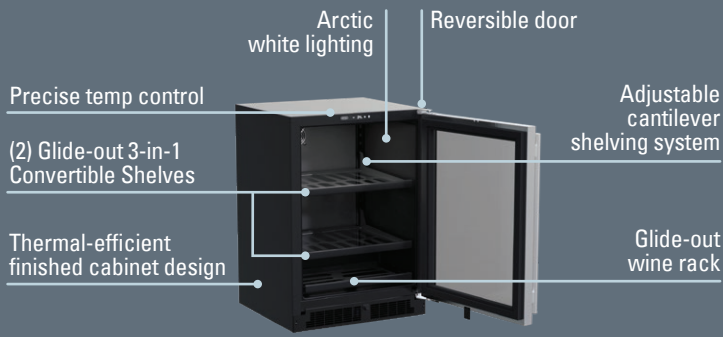
Solid Panel Ready

MLBV224-IS01A

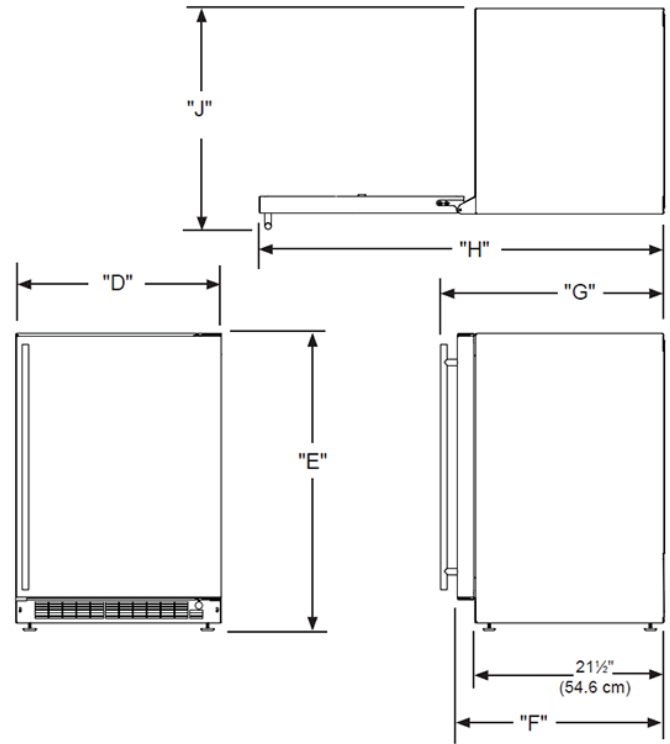
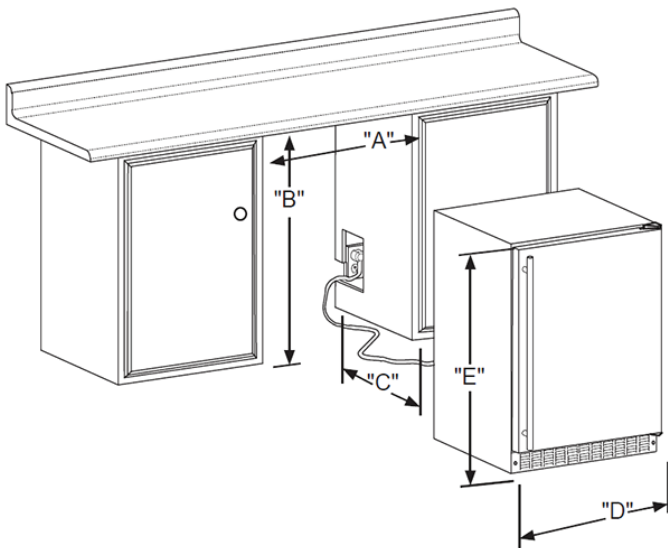
Solid Stainless Steel

MLBV224-SS01A





H: 33 3/4" W: 23 7/8" D: 25 21/32" (with handle)



Rough In Dimensions*

"A"	"B"	"C"
24"	34-1/4" to 35-1/4"	24"
(61 CM)	(87 CM to 89.5 CM)	(61 CM)

Cabinet Dimensions*

"D"	"E"	"F"	"G"	"H"	"J"
23-7/8"	33-5/8" TO 34-5/8"	23-5/8"*	25-21/32"*	47-3/4"*	26-1/2"*
(60.7 CM)	(85.4 CM TO 87.9 CM)	(60 CM)	(65.2 CM)	(146.6 CM)	(67.3 CM)

*Stainless steel model dimensions only. For panel-ready models, see the owner's guide online at marvelrefrigeration.com.

Capacity	5.5 CU. FT.
Control Type	Electronic
Sabbath Mode	Yes
Temperature Range	34°F to 60°F
Handle Style	Slim (handle not included on panel-ready models)
Hinge Type	Reversible
Interior Lighting	White LED
Shelving System	Cantilevered
Toe Grille Finish	Black

Lock	No
Electrical Requirements	115V / 60 Hz / 15A
Cord Length	6 FT.
Shipping Dimensions	28" W x 31" D x 37" H
Shipping Weight	160 LBS
Agency Approval	UL
Refrigerant Type	R600a

For comprehensive installation instructions, including panel overlay details, please visit marvelrefrigeration.com to access the owner's guide.

