

1014-3012
Maverick™ 1.0 EL SmartHeight™
 Elongated Front, Vitreous China, Two-Piece Toilet



Features

- Uses 38% less water than conventional toilets
- High efficiency 1.0 gpf / 3.8 lpf low water consumption
- Elongated SmartHeight™ front bowl
- HET 3" flush valve
- Pilot operated anti-siphon fill valve
- 12" rough-in
- Chrome-plated, metal push button actuator
- 2" glazed trapway
- The Mansfield® limited lifetime warranty
- Available in White only






Elongated Front



Model 1014-3012
 Toilet seat not included

Components

Model #	Description	Codes/Standards
1014-3012	Elongated front, two-piece toilet. Includes top metal push button actuator. Less toilet seat and supply.	  
1014	Elongated front toilet bowl only.	
3012	Tank and cover only, with top metal push button actuator. Less supply.	




1014-3012

Maverick™ 1.0 EL SmartHeight™

Elongated Front, Vitreous China, Two-Piece Toilet

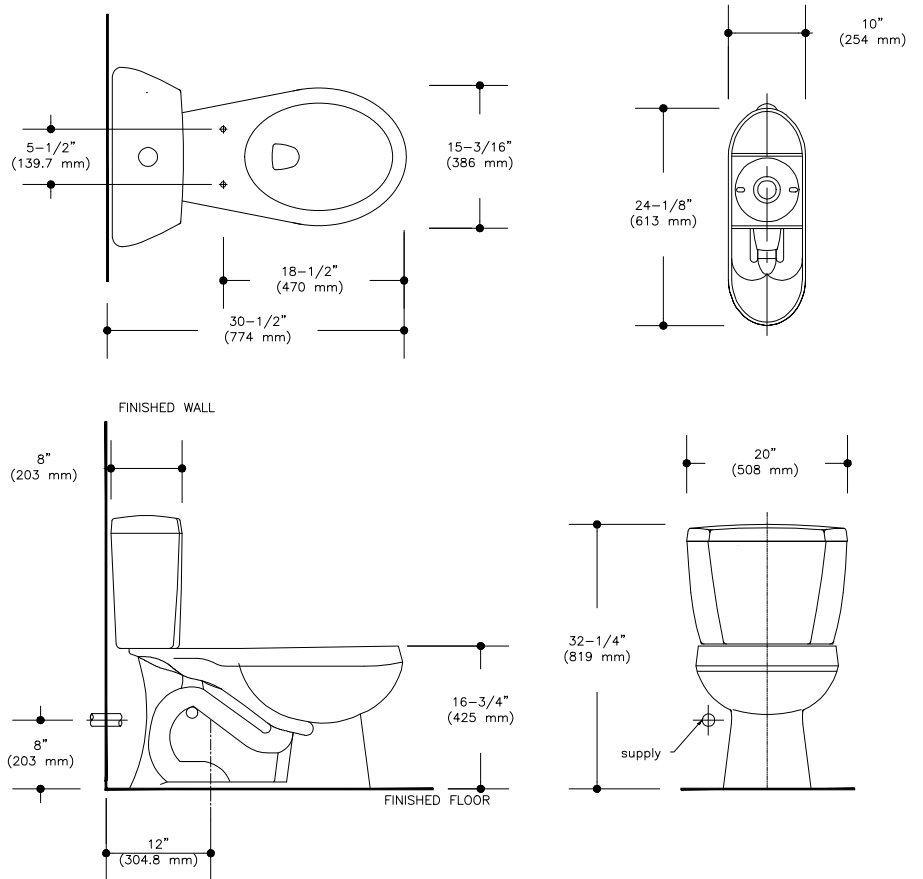


Specifications

Model #	Description	Codes/Standards
1014-3012	Elongated front (1.0 gpf/3.8 lpf) two-piece toilet	  

Specification	Description	Specification	Description
Material	Vitreous China	Trap Diameter	2"
Water Pressure Range	20 to 80 PSI	Trap Seal	2-3/8"
Flush System	3" Flush Valve	Rough-in	12"
Water Usage	1.0 gpf / 3.8 lpf	Shipping Weight	Model 1014 - 58 lbs. (26 kg)
Water Surface Area	6-1/4" X 9"		Model 3012 - 34 lbs. (15 kg)
MaP Rating	500 grams	Warranty	Vitreous China - Limited Lifetime Tank Trim - Limited One Year

Technical Information



See our complete line of acrylic and vitreous china bathroom fixtures, plastic tank trim and plumbing products.

These dimensions are nominal and subject to change without notice.

Fixture performance and specifications meet or exceed ASME A112.19.2-2008/CSA B45.1-08 standards, and other state and local codes.