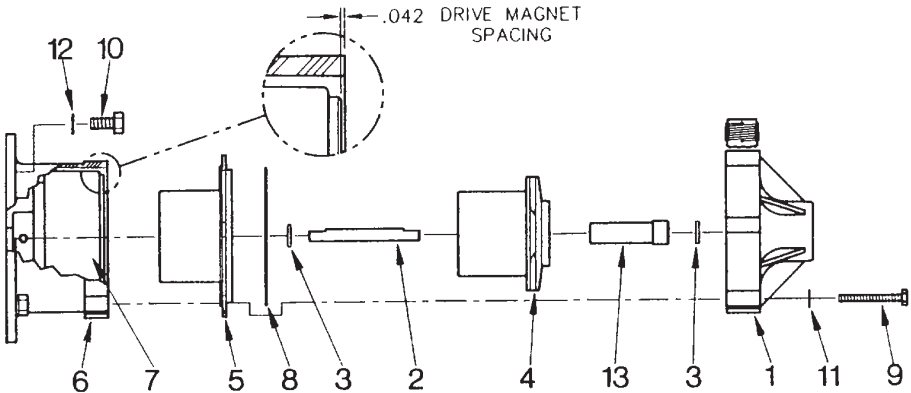


ASSEMBLY INSTRUCTIONS FOR 5.5 AND 6-MD SERIES PUMPS LESS MOTOR

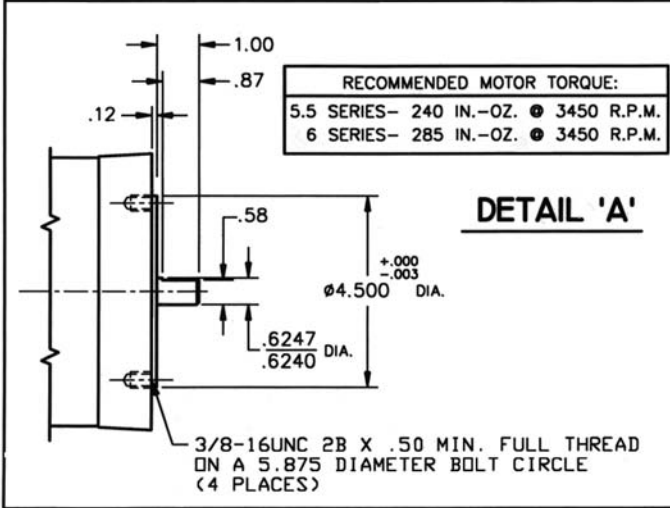


ITEM NO.	PART NO.	DESCRIPTION	QTY.	TE-5.5-MD-SC	TE-5.5-MD-HC	TE-6-MD-SC	TE-6-MD-HC	TE-6-MD-CK	TE-6-MD-CK
				586504	586604	586504	586604	586678	586688
1	185111	VOLUTE	1	•					
1	185112	VOLUTE	1		•				
1	185113	VOLUTE	1			•			
1	185114	VOLUTE	1				•		
1	186114	VOLUTE	1					•	•
2	185100	SHAFT, IMPELLER	1	•	•	•	•	•	•
3	187085	THRUSH WASHER	2	•	•	•	•	•	•
4	185128*	IMPELLER	1	•					
4	185138*	IMPELLER	1		•				
4	185148*	IMPELLER	1			•			
4	185158*	IMPELLER	1				•		
4	186160*	IMPELLER	1						•
4	186158*	IMPELLER	1					•	
5	185181	BACKPLATE	1	•	•	•	•		
5	186181	BACKPLATE	1					•	•
6	185162	HOUSING, MAGNET	1	•		•		•	•
6	185167	HOUSING, MAGNET	1				•		
7	185172	DRIVE MAGNET ASSY	1	•	•	•	•	•	•
8	924016	O-RING SEAL (VITON)	1	•	•	•	•	•	•
8	924019†	O-RING SEAL (TEFLON)	1					•	•
9	903712	BOLT, 1/4" - 20 X 2" SST	6	•	•	•	•	•	•
10	903713	BOLT, 3/8" - 16 X 3/4" SST	4	•	•	•	•	•	•
11	921050	WASHER, 1/4" SST	6	•	•	•	•	•	•
12	921051	WASHER, 3/8" SST	4	•	•	•	•	•	•
13	185101	BUSHING, IMPELLER	1	•	•	•			
13	186101	BUSHING, IMPELLER	1					•	
13	186102	BUSHING, IMPELLER	1						•

*impeller assy. includes bushing (item 13).

†Not supplied with pump, optional configuration.

MOTOR IS NOT INCLUDED WITH THIS PUMPING HEAD. MOTOR DETAIL 'A' GIVES NECESSARY MOUNTING DIMENSIONS TO ACCOMMODATE THE 5.5 AND 6 SERIES PUMPING HEADS.

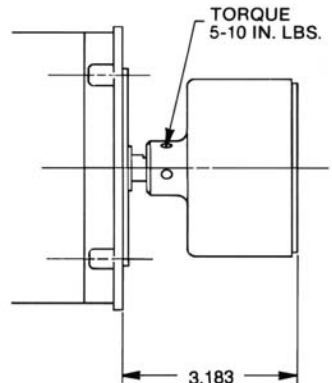


ASSEMBLY PROCEDURE

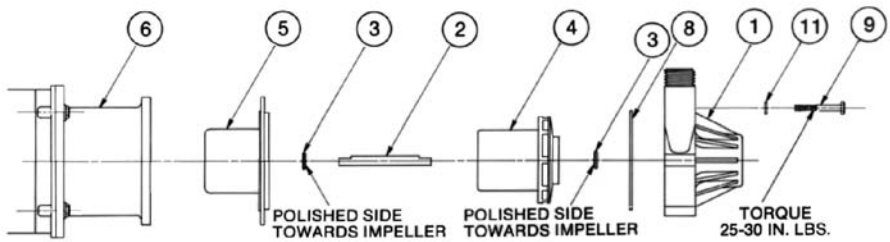
READ ALL STEPS THOROUGHLY BEFORE BEGINNING ASSEMBLY!

STEP 1

Slide drive magnet assembly (item 7) on motor shaft. Space drive magnet assembly to dimension indicated in assembly detail 'B'. Tighten two set screws in drive magnet assembly to torque indicated.



ASSEMBLY DETAIL 'B'



ASSEMBLY DETAIL 'C'

STEP 2

Install drive magnet housing (item 6) to motor face.

STEP 3

Silicone lubricant may be applied to impeller shaft (item 2) and thrust washers (item 3) to decrease the wearing tendencies of these parts and the impeller/magnet assembly (item 4). Note: If one side of thrust washer (item 3) has a small black dot or indentation mark, then the reverse side is the polished side. Slip one thrust washer (item 3) onto the end of impeller shaft (item 2) with polished side of thrust washer facing toward the opposite end of the impeller shaft as shown in assembly detail 'C'. Insert that same end of impeller shaft (item 2) into boss in backplate (item 5). Silicone lubricant may also be used to hold thrust washer (item 3) to shaft (item 2) during this procedure.

STEP 4

Position backplate (item 5) into drive magnet housing (item 6). Slide impeller/magnet assembly (item 4) onto shaft. Use caution while doing this so as not to allow the impeller/magnet assembly (item 4) to slam into the backplate (item 5) due to the magnetic attraction of the drive magnet assembly (item 7), because this could damage the backplate. Slip one thrust washer (item 3) onto end of shaft (item 2) with polished side facing toward impeller/magnet assembly (item 4).

STEP 5

Install o-ring (item 8) into gland on backplate (item 5). If difficulty occurs vaseline may be used to get o-ring (item 8) to stay in the gland on backplate (item 5).

STEP 6

Position volute (item 1) onto backplate (item 5) making sure that volute mounting holes are aligned with holes in backplate and holes in drive magnet housing. Push volute (item 1) onto impeller shaft (item 2) checking for alignment of impeller shaft (item 2) to hole in center hub in volute (item 1). Push volute onto shaft until volute contacts o-ring (item 8).

STEP 7

Fix volute (item 1) to backplate (item 5) and drive magnet housing (item 6) using 1/4"-20 x 2" bolts (item 9) with 1/4" flat washer (item 11). Torque bolts (item 9) as indicated on assembly detail 'C'.

KEEP THIS FOLDER

File this for safekeeping. It may be valuable to you for service under the terms of the warranty.

Model # _____ Date of Purchase _____

Catalog # _____ Serial # _____

Name of Dealer _____

Little GIANT
Pump Company

P.O. BOX 12010 • 3810 N. TULSA
OKLAHOMA CITY, OKLAHOMA 73112
(405) 947-2511