

Little Giant Pump Company
3810 North Tulsa Street
Oklahoma City, Oklahoma 73112
405.947.2511 • FAX 405.947.8720

OWNERS MANUAL For Little Giant® BASIN PACKAGE SYSTEMS

**BS2448PBHP-K • BS2448FGHP-K • BS2460PBHP-K
BS2460FGHP-K • BS2448PBRs-K • BS2448FGRs-K
BS2460PBRs-K • BS2460FGRs-K • BS2472PBRs-K
BS2472FGRs-K • BS2484PBRs-K • BS2484FGRs-K**

INTRODUCTION

These instructions are for the typical installation of a Little Giant Pump Company Basin Package System. This package system includes a rugged polyethylene or fiberglass basin, equipped with either a guide rail system for easy access to the pump or a hard-piped system. The inlet to the basin is to be field installed (see Figures 2 and 4) and uses a 4" Adapt-A-Flex fitting. The hole for routing of the electrical cord(s) is to be field installed (See Figures 2 and 4) and uses a 2" Adapt-A-Flex fitting. These fittings are constructed from neoprene plastic, are easy to install and require no sealants. This design has boltless vapor and water leakproof sealing ability.

I. BASIN INSTALLATION INSTRUCTIONS

(See Figure 3)

1. Inspect all materials supplied by and/or installed by Little Giant Pump Company to assure there are no damages due to shipping prior to installation.
2. Excavate hole large enough to accommodate basin, usually 12" – 18" larger than the diameter of the basin, and 4" - 6" deeper than the basin depth. Also, hole should be able to accommodate under ground piping, backfill material and adequate working space.
3. Prepare the bottom of the excavated hole with 4" - 6" of backfill material or concrete pad. Check base to insure it is level and smooth.
4. Install basin on gravel base or concrete pad. Anchor down if necessary. Basin to be installed only in vertical position.
5. For fiberglass basins, concrete may be poured around bottom basin bottom if ballast is required for buoyancy.
6. Plumb all inlet and discharge piping as well as the electrical piping for internal junction box (Not Included). Inlet pipe is recommended to be 4" Schedule 40 PVC to accommodate 4" Adapt-A-Flex fitting (see Figure 2 and step 5 for installation tips). Discharge piping for the pump and electrical cords is recommended to be either Schedule 40 or 80 1-1/4" PVC piping, depending on local codes and installer recommendation (see Figure 1). Basin is to be vented per local plumbing codes.
7. Backfill with pea gravel 4" to 6" around the entire periphery of the basin. Compact backfill material in 12" lifts. Stop and connect piping as required. If using concrete as backfill on poly-basin, the basin should be filled with water to provide support and stabilization.

RECOMMENDED BACKFILL MATERIAL

Gravel or stone to be free flowing, naturally round aggregate with a particle size of not less than 1/8" and not greater than 3/4" in diameter.

CAUTION: Do not bury basin deeper than basin height. In freezing conditions backfill material must be dry and free of ice.

II. PUMP INSTALLATION

RAIL SYSTEM BASINS

1. Fully thread the nut onto discharge pipe. Place lower guide rail onto discharge pipe, below the nut (See Figure 1).
2. Apply teflon tape to discharge pipe threads. Thread discharge pipe into pump discharge until disconnect and pump are oriented as shown (See Figure 4). Make sure that the discharge pipe is tight.
3. With discharge pipe installed, orient lower guide rail as shown in Figure 4 and tighten nut. The lower guide rail should now be in alignment with the upper guide rail.
4. Attach the lifting chain to the clevis and eye bolt. Attach chain to wire handle on pump and eye bolt on disconnect.
5. Determine the center of gravity of pump by making adjustments to the clevis location on the chain.
6. Lift pump and lower down into basin.
7. Position pump so the lower guide is aligned with the rail. Slowly lower pump into basin and position upper guide so that it is aligned with the rail (See Figure 4).
8. Pump and disconnect assembly should slide rail down until the disconnect is seated.
9. Make appropriate electrical connections and mount junction box at desired location.

HARD-PIPED BASINS

NOTE: HARD-PIPED INSTALLATIONS REQUIRE USE OF THE LITTLE GIANT GRINDER LEG KIT

1. Install Little Giant Grinder Leg Kit on pump.
2. Apply teflon tape to discharge pipe assembly.
3. Thread discharge pipe into discharge of pump.
4. Attach lifting chain to the clevis and then attach to the wire handle on top of pump.
5. Lift pump and lower down into basin.
6. Orient the pump assembly as shown (See Figure 4) and connect the assembly to the pipe fitting in basin.
7. Make appropriate electrical connections and mount junction box, if needed, at desired location.

III. JUNCTION BOX WIRING (JUNCTION BOX NOT INCLUDED)

All wiring connections coming from the pump and/or to the control panels should be made within a junction box in accordance with national, state, local and NEC codes where applicable.

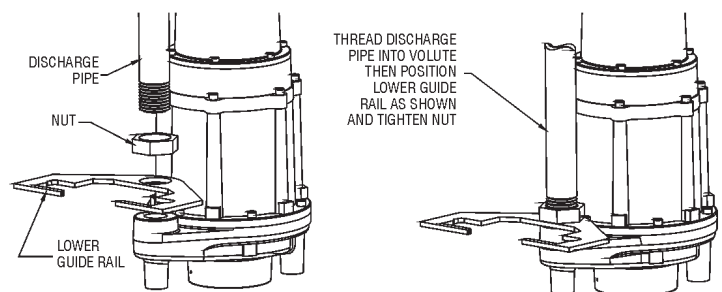


FIG. 1

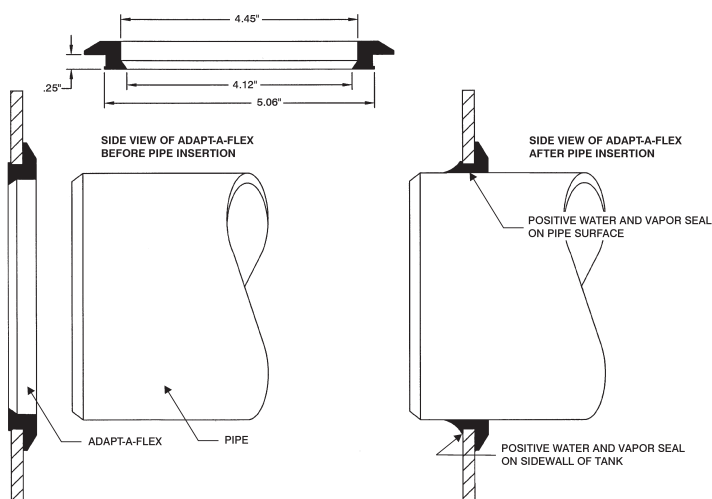


FIG. 2

NOTE: If using a Little Giant Pump Company manual grinder pump and control panel in combination with this basin package system, then refer to wiring section of the Little Giant Pump Company control panel instruction sheet for additional details on wiring pump and panel in conjunction with junction box in this basin. If using pump and control panel other than from Little Giant Pump Company, refer to the appropriate section of the pump and/or control panel instruction sheet(s) for completion of the wiring of components.

IV. ADAPT-A-FLEX INSTALLATION INSTRUCTIONS

(See Figure 2)

Adapt-A-Flex fittings are constructed from neoprene plastic, are easy to install and require no sealants. The Adapt-A-Flex design has boltless and water leakproof sealing ability.

4" Adapt-A-Flex seal (for inlet):

1. Using a 5.0" hole saw, cut an opening in tank sidewall and seat Adapt-A-Flex fitting as shown.
2. For ease of installation chamfer ends of pipe before inserting through the Adapt-A-Flex.
3. Lubricate pipe with soapy water and insert as shown.

2" Adapt-A-Flex seal (for electrical):

1. Using a 3.0" hole saw, cut an opening in tank sidewall and seat Adapt-A-Flex fitting as shown.
2. For ease of installation chamfer ends of pipe before inserting through the Adapt-A-Flex.
3. Lubricate pipe with soapy water and insert as shown.

Fig. 3-1

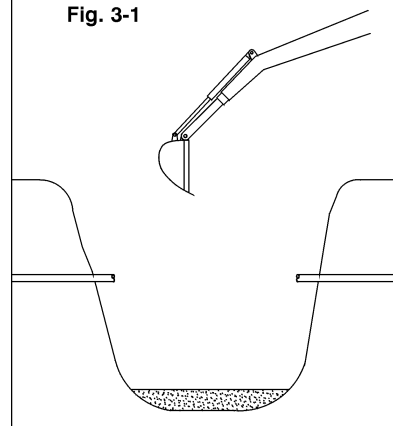


Fig. 3-2

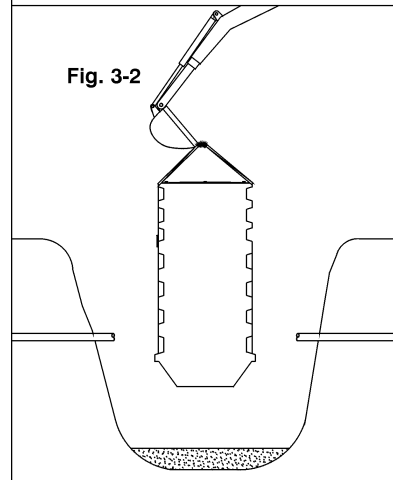


Fig. 3-3

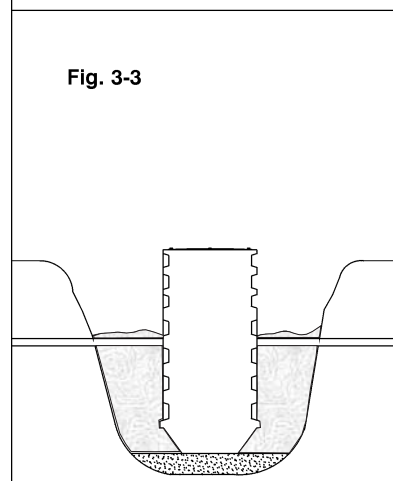
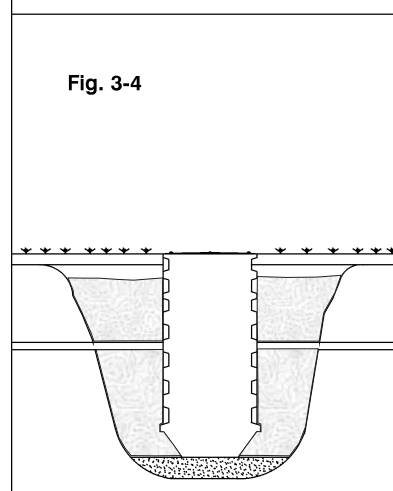


Fig. 3-4



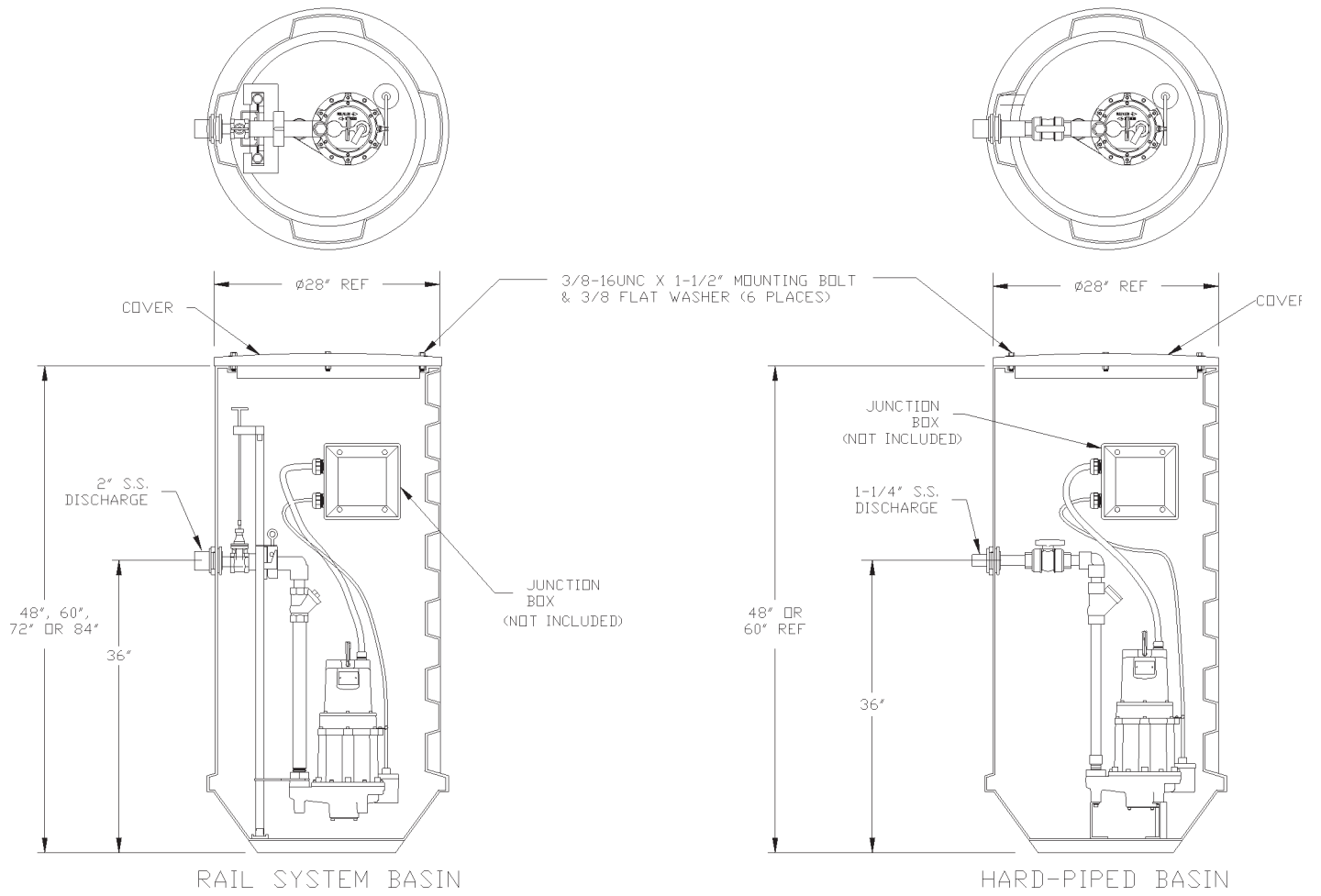


FIG. 4

A-L111

LIMITED WARRANTY

Little Giant Basin Systems are suitable for housing, residential sewage and other non-explosive, non-corrosive, non-abrasive liquids not above 140°F.

Your Little Giant product is guaranteed to be in perfect condition when it leaves our Factory. It is warranted against defective materials and workmanship for a period of 12 months (90 day warranty on Models: 1-AA-OM, GKPK-SC, PP-1, PPS-1, PP-12, PPS-12, PP-230 and Cooler King) from date of purchase by the user. No warranty on brush wear in Model 35-OM and impeller or cam in Models PP-1, PP-12, and PP-230.

Any product that should fail for either of the above two reasons and is still within the warranty period will be repaired or replaced at the option of Little Giant as the sole remedy of buyer. For our customers in the CONTINENTAL UNITED STATES: Please return the defective unit, postage paid, to the factory at 301 N. MacArthur, Oklahoma City, OK 73127-6616. All defective product returned under warranty will be fully inspected to determine the cause of failure before warranty is approved.

For our customers located elsewhere; it is not economical, due to duties and freight, to return the pump to the factory for inspection. Please return the defective unit to any authorized distributor or dealer with a brief written explanation of the problem. If there are no apparent signs of customer abuse, unit will be repaired or replaced. If dispute arises over replacement of the pump, the distributor or dealer is to segregate such items and hold for inspection by a representative of Little Giant Pump Company or notify factory with details of the problem for factory disposition and settlement of warranty claim.

DISCLAIMER:

THE FOREGOING WARRANTY IS AN EXCLUSIVE WARRANTY IN LIEU OF ANY OTHER EXPRESS WARRANTIES. ANY IMPLIED WARRANTIES (INCLUDING, BUT NOT LIMITED TO ANY IMPLIED WARRANTY OF MERCHANTABILITY OR FITNESS FOR A PARTICULAR PURPOSE) TO THE EXTENT EITHER APPLIES TO A PUMP SHALL BE LIMITED IN DURATION TO THE PERIODS OF THE EXPRESS WARRANTIES GIVEN ABOVE.

Warranty will be VOID if any of the following conditions are found:

1. Sealed motor housing opened.
2. Product connected to voltage other than indicated on nameplate.
3. Cord cut off to a length less than three feet.
4. Pump allowed to operate dry (fluid supply cut off).
5. Pump used to circulate anything other than fresh water, light oils, or other mild liquids at approximately room temperature.
6. Product abuse by customer.

Any oral statements about the product made by the seller, the manufacturer, the representatives or any other parties, do not constitute warranties, shall not be relied upon by the user and are not part of the contract for sale. Seller's and manufacturer's only obligation, and buyer's only remedy, shall be the replacement and/or repair by the manufacturer of the product as described above. NEITHER SELLER NOR THE MANUFACTURER SHALL BE LIABLE FOR ANY INJURY, LOSS OR DAMAGE, DIRECT, INCIDENTAL OR CONSEQUENTIAL (INCLUDING, BUT NOT LIMITED TO INCIDENTAL OR CONSEQUENTIAL DAMAGES FOR LOST PROFITS, LOST SALES, INJURY TO PERSON OR PROPERTY, OR ANY OTHER INCIDENTAL OR CONSEQUENTIAL LOSS), ARISING OUT OF THE USE OR THE INABILITY TO USE THE PRODUCT AND THE USER AGREES THAT NO OTHER REMEDY SHALL BE AVAILABLE TO IT. Before using, the user shall determine the suitability of the product for the intended use, and user assumes all risk and liability whatsoever in connection therewith.

Some states and countries do not allow limitations on how long an implied warranty lasts or the exclusion or limitation of incidental or consequential damages, so the above limitations or exclusions may not apply to you. This warranty gives you specific legal rights, and you may also have other rights which vary from state to state and country to country.

The National Electric Code (in the USA) and similar codes in other countries require a Ground Fault Circuit Interrupter (GFCI) to be installed in the branch circuit supplying fountain equipment rated above 15 volts. 115 volt GFCI's (with various cord lengths) are in stock, and we recommend each pump be used with a GFCI.