

## SMALL SUBMERSIBLE ENCAPSULATED PUMP MODEL 1-EA-42



### EN INTRODUCTION

This instruction sheet provides you with the information required to safely own and operate your Little Giant pump. Retain these instructions for future reference.

The Little Giant pump you have purchased is of the highest quality workmanship and material, and has been engineered to give you long and reliable service. Little Giant pumps are carefully tested, inspected, and packaged to ensure safe delivery and operation. Please examine your pump carefully to ensure that no damage occurred during shipment. If damage has occurred, please contact the place of purchase. They will assist you in replacement or repair, if required.

**READ THESE INSTRUCTIONS CAREFULLY BEFORE ATTEMPTING TO INSTALL, OPERATE, OR SERVICE YOUR LITTLE GIANT PUMP. KNOW THE PUMP'S APPLICATION, LIMITATIONS, AND POTENTIAL HAZARDS. PROTECT YOURSELF AND OTHERS BY OBSERVING ALL SAFETY INFORMATION. FAILURE TO COMPLY WITH THESE INSTRUCTIONS COULD RESULT IN PERSONAL INJURY AND/OR PROPERTY DAMAGE!**

#### SAFETY GUIDELINES



Do not use to pump flammable or explosive fluids such as gasoline, fuel oil, kerosene, etc. Pump should only be used with liquids compatible with pump component materials.

Do not handle a pump or pump motor with wet hands or when standing on a wet or damp surface, or in water.

Do not pull the pump out of the water by the power cord when the pump is operating or connected to power source.

This pump is supplied with a grounding conductor and/or grounding-type attachment plug. To reduce the risk of electric shock, ensure that it is connected to a properly-grounded, grounding-type receptacle.

The National Electric Code requires a ground fault circuit interrupter (GFCI) be installed in the branch circuit supplying fountain equipment, pools, etc.

In any installation where property damage and/or personal injury might result from an inoperative or leaking pump due to power outages, discharge line blockage, or any other reason, a backup system and/or alarm should be used.

Support the pump and its piping during assembly and after installation. Failure to do so may cause damage to the pump and/or piping.

#### DESCRIPTION

This pump is epoxy-encapsulated and can be used submersed or in-line. Its outer case is constructed of die-cast aluminum and polyester, and the inside case is filled with a heat-transfer epoxy.

#### ELECTRICAL CONNECTIONS



1. Check the pump label for the proper voltage required. Do not connect the pump to any voltage other than that shown.
2. This pump is supplied with a 3-prong electrical plug. The third prong grounds the pump to prevent possible electrical shock hazard. DO NOT REMOVE the third prong from the cord; this will void your warranty.

#### INSTALLATION AND OPERATION



1. This pump may be used submersed or in-line. It may be positioned at any attitude, but preferably with the volute located down or to the side.

**IMPORTANT:** When used in-line, it must be installed so that the pump head (volute) is flooded before starting. That is, the inlet of the pump must be below the level of the surface of the liquid being pumped (Figure 1).

2. The weight of the pump must be supported adequately. DO NOT support the pump by the discharge connection alone. The pump may be supported

by using the two mounting holes in the back of the pump. These holes accept #8 self-tapping screws. Hole depth is .37" - DO NOT exceed the hole depth.

3. Do not restrict the intake side of the pump. This may cause damage to the seal and may starve the pump. For reduced flow rates, place a valve on the discharge side of the pump, or - if flexible vinyl tubing is used - a clamp on the tubing to restrict the flow.
4. Do not let the unit operate dry. It is cooled by pumping fluid. You may damage the seal and the motor may fail if the pump is allowed to run dry.
5. If the unit is going to be idle for a period of time, follow the cleaning instructions outlined in the next section. Do not let the unit freeze, as this may cause cracking or distortion that may destroy the unit.

#### SERVICE INSTRUCTIONS



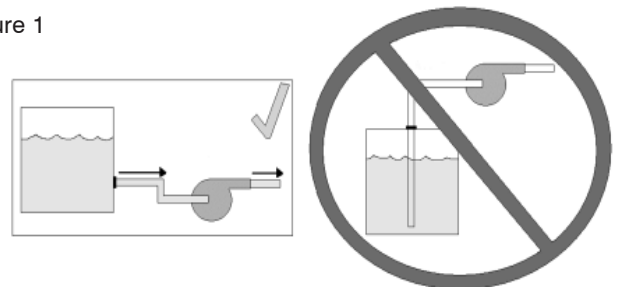
MAKE CERTAIN THAT THE UNIT IS DISCONNECTED FROM THE POWER SOURCE BEFORE ATTEMPTING TO SERVICE OR REMOVE ANY COMPONENT!

This unit is permanently lubricated. Oiling is not required. Do not open the sealed portion of the unit or remove housing screws.

Periodic cleaning of the pump parts will prolong the life and efficiency of the pump. Refer to the following steps and drawing to service your pump:

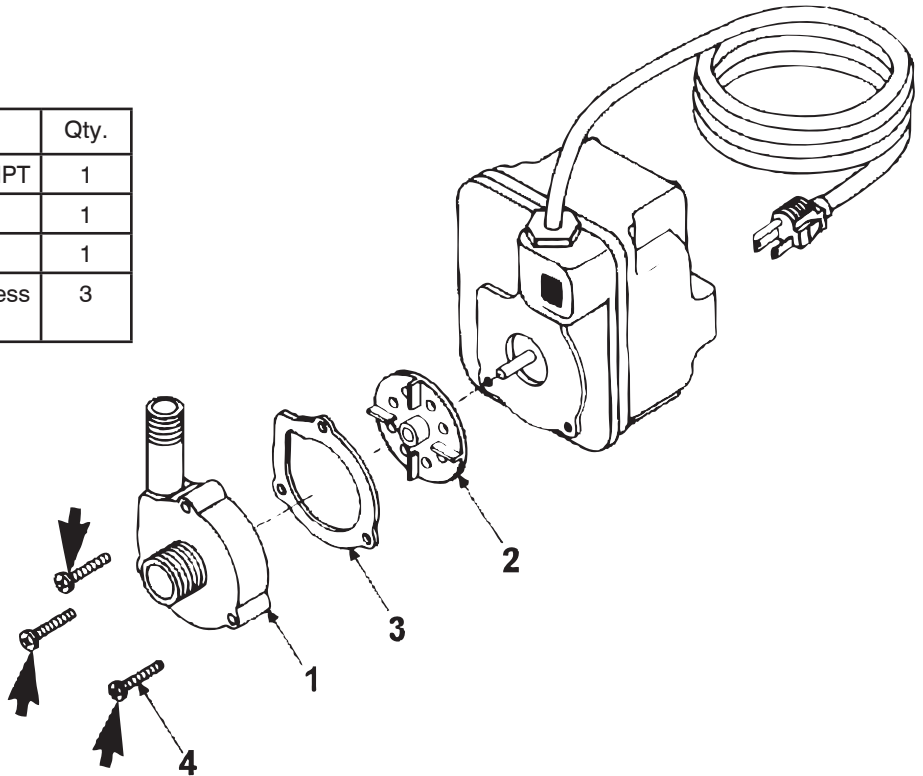
1. Check power cord to ensure that it is in good condition with no nicks or cuts.
2. Remove the screen (not shown) from the pump.
3. Remove the 3 screws (indicated by the arrows). DO NOT remove any other screws.
4. Lightly clean any corrosion or debris that may clog the impeller. Use a brush and penetrating oil and lightly scrape to remove encrusted material.
5. Turn the impeller by hand to make sure it turns freely. Set pump down so the pump and impeller are not touching anything. Plug the unit into a GFCI circuit for 10 seconds to see if the impeller turns:
  - a) If it does rotate and the GFCI did not trip, unplug unit and install parts in reverse order.
  - b) If it does not rotate, if it is tripping circuit breakers, or otherwise does not operate properly, unplug unit and return to Little Giant or its authorized service center. DO NOT attempt repairs yourself.

Figure 1



**PARTS**  
(PUMP CATALOG NUMBER 518087)

Item No.	Part No.	Description	Qty.
1	101377	Volute, nylon, 1/4 X 1/2 NPT	1
2	118442	Impeller, nylon, press-on	1
3	131009	Gasket, neoprene	1
4	902411	Screw, 8-18 X 7/8, stainless steel	3



**LIMITED WARRANTY**

Your Little Giant product is guaranteed to be in perfect condition when it leaves our factory. It is warranted against defective materials and workmanship for a period of 12 months (90 day warranty on Models: 1-AA-OM, GKPK-SC, PP Series, PPS Series, and Cooler King) from date of purchase by the user. No warranty on brush wear in Model 35-OM and impeller or cam in PP Series and PPS Series.

Any product that should fail for either of the above two reasons and is still within the warranty period will be repaired or replaced at the option of Little Giant as the sole remedy of buyer. For our customers in the CONTINENTAL UNITED STATES: Please return the defective unit, postage paid, to the factory at 301 N. MacArthur, Oklahoma City, OK 73127-6616. All defective product returned under warranty will be fully inspected to determine the cause of failure before warranty is approved.

For our customers located elsewhere; it is not economical, due to duties and freight, to return the pump to the factory for inspection. Please return the defective unit to any authorized distributor or dealer with a brief written explanation of the problem. If there are no apparent signs of customer abuse, unit will be repaired or replaced. If dispute arises over replacement of the pump, the distributor or dealer is to segregate such items and hold for inspection by a representative of Little Giant or notify factory with details of the problem for factory disposition and settlement of warranty claim.

**DISCLAIMER: THE FOREGOING WARRANTY IS AN EXCLUSIVE WARRANTY IN LIEU OF ANY OTHER EXPRESS WARRANTIES. ANY IMPLIED WARRANTIES (INCLUDING, BUT NOT LIMITED TO ANY IMPLIED WARRANTY OF MERCHANTABILITY OR FITNESS FOR A PARTICULAR PURPOSE) TO THE EXTENT EITHER APPLIES TO A PUMP SHALL BE LIMITED IN DURATION TO THE PERIODS OF THE EXPRESS WARRANTIES GIVEN ABOVE.**

Warranty will be VOID if any of the following conditions are found:

1. Sealed motor housing opened.
2. Product connected to voltage other than indicated on nameplate.

3. Cord cut off to a length less than three feet.
4. Pump allowed to operate dry (fluid supply cut off).
5. Pump used to circulate anything other than fresh water at approximately room temperature.
6. Product abuse by customer.

Any oral statements about the product made by the seller, the manufacturer, the representatives or any other parties, do not constitute warranties, shall not be relied upon by the user and are not part of the contract for sale. Seller's and manufacturer's only obligation, and buyer's only remedy, shall be the replacement and/or repair by the manufacturer of the product as described above. NEITHER SELLER NOR THE MANUFACTURER SHALL BE LIABLE FOR ANY INJURY, LOSS OR DAMAGE, DIRECT, INCIDENTAL OR CONSEQUENTIAL (INCLUDING, BUT NOT LIMITED TO INCIDENTAL OR CONSEQUENTIAL DAMAGES FOR LOST PROFITS, LOST SALES, INJURY TO PERSON OR PROPERTY, OR ANY OTHER INCIDENTAL OR CONSEQUENTIAL LOSS), ARISING OUT OF THE USE OR THE INABILITY TO USE THE PRODUCT AND THE USER AGREES THAT NO OTHER REMEDY SHALL BE AVAILABLE TO IT. Before using, the user shall determine the suitability of the product for the intended use, and user assumes all risk and liability whatsoever in connection therewith.

Some states and countries do not allow limitations on how long an implied warranty lasts or the exclusion or limitation of incidental or consequential damages, so the above limitations or exclusions may not apply to you. This warranty gives you specific legal rights, and you may also have other rights which vary from state to state and country to country.

The National Electric Code (in the USA) and similar codes in other countries require a Ground Fault Circuit Interrupter (GFCI) to be installed in the branch circuit supplying fountain equipment rated above 15 volts. 115 volt GFCI's (with various cord lengths) are in stock, and we recommend each pump be used with a GFCI.

For parts or repair, please contact ..... 1.888.572.9933  
For technical assistance, please contact ..... 1.888.956.0000

www.LittleGiantPump.com  
CustomerService-WTS@fele.com