

## LITTLE GIANT SEWAGE ACCESSORIES & INSTRUCTIONS FOR TYPICAL INSTALLATION

### ASSEMBLY INSTRUCTIONS FOR 9S-SMPX-LG 10S-SMPX-LG (ADAPTAFLEX VENT/DISCHARGE FITTINGS)

#### PRE-PACKAGED UNIT (FIGURE 1):

Verify all parts with basin and cover assemblies are received intact. The selected discharge and vent size will determine which flanges to use. The flanges provided will allow the following vent/discharge combinations to be used: 2" discharge/3" vent, 3" discharge/2" vent, or a 2" discharge/2" vent. **NOTE:** The cover has three prefabricated holes, one to fit the 2-hole cord grommet, one to fit the 2" flange, and one to fit the 3" flange or 3" to 2" reducer flange (Figure 3). Remove the proper flanges from the hardware kit to accommodate the vent/discharge combination used.

1. Remove the bolts and washers from the cover and set them aside.
2. Remove the gasket from hardware kit and place the gasket around the circumference of the basin, inside the bolt circle.
3. Install the discharge pipe into the discharge of the pump.
4. Install the float switch 4" above the discharge of the pump, with a 3-1/2" tether length. Ensure that the float switch will not contact the pump or the side of the basin during operation. Refer to the float switch instruction manual for alternative settings.
5. Place the pump in the basin.
6. Install the adapt-a-flex flange that fits the discharge on the underside of the cover. Lube the adapt-a-flex flange and discharge pipe with petroleum jelly or liquid dish soap. Route the power cord and float switch cord through the smallest hole before installing the cover. Slide the cover with the adapt-a-flex flange in place over the discharge pipe.
7. Install the cord grommet by placing the power cord and float switch cord into the grommet openings. Then push the grommet into the smallest hole in the cover.
8. Secure the cover to the basin using the bolts and washers that you set aside earlier.
9. Install an adapt-a-flex flange into the remaining hole that corresponds to the vent pipe size used. Lubricate the flange and vent pipe and press the vent pipe into the flange 2 to 3 inches.

#### PRE-ASSEMBLED UNIT (FIGURE 2):

The pre-assembled unit is fully assembled and ready for installation.

1. Remove the check valve from the discharge pipe and re-install as shown in Figure 3. **CAUTION:** For the best performance of check valves when handling solids, install the valve in a horizontal position or at an angle of not more than 45°. Do not install a check valve in a vertical position as solids may settle in the valve and prevent it from opening on start-up.
2. Remove the cord from the vent hole and install the vent pipe into the hole with the adapt-a-flex flange.
3. See Figure 3 to complete a typical installation.
4. To test the unit, plug the unit in and run water into the basin until the unit switches on. If the unit does not operate, refer to the troubleshooting information in the pump instructions.

REPLACEMENT PARTS LIST			
ITEM	P/N	DESCRIPTION	QTY.
1	113095	BASIN, 20" x 30"	1
*	113094	COVER ASSEMBLY (includes items 2 - 6)	1
*	113170	COVER ASSEMBLY HARDWARE KIT (includes items 3-6)	1
2	113057	COVER	1
3	N/A	FLANGE (adapt-a-flex), 2" PIPE	1
4	N/A	FLANGE (adapt-a-flex), 3" PIPE	1
5	N/A	FLANGE (adapt-a-flex), REDUCER, 3" TO 2"	1
6	N/A	GROMMET, 2-HOLE	1
7	113423	PIPE, DISCHARGE 2"	1
7	113424	PIPE, DISCHARGE 3"	1
8	940022	CHECK VALVE, 2"	1
8	940023	CHECK VALVE, 3" (only on 509094 & 509095)	1
8	940026	CHECK VALVE/BALL VALVE, 2" (only on 509088 & 509089)	1

\*Not shown

Figure 1  
Pre-Packaged

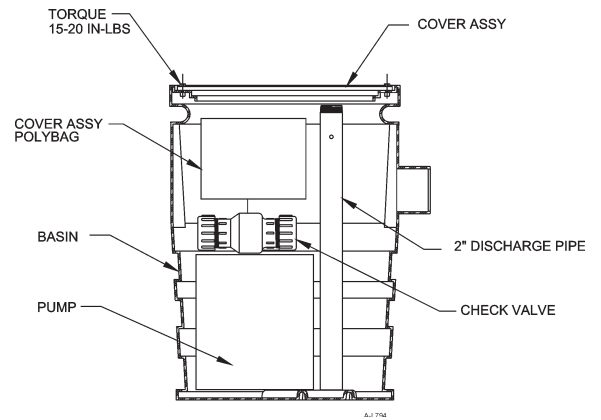


Figure 2  
Pre-Assembled

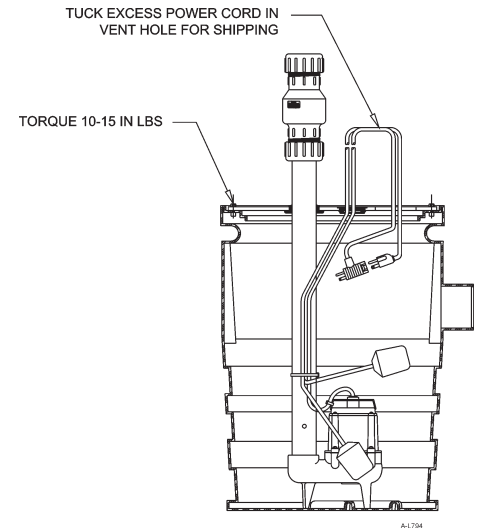
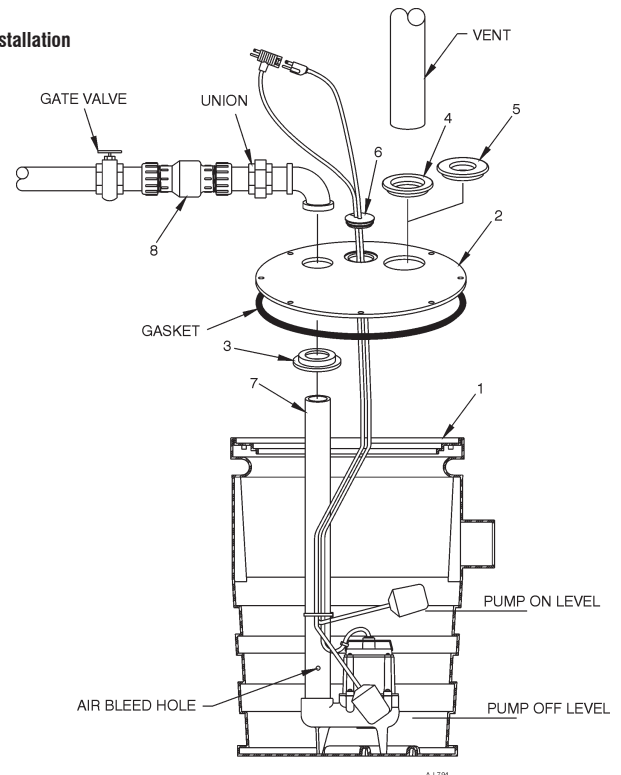


Figure 3  
Typical Installation



For parts or repair, please contact . . . . . 1.888.572.9933  
For technical assistance, please contact . . . . . 1.888.956.0000

www.LittleGiantPump.com  
CustomerService-WTS@fele.com