

Wastewater

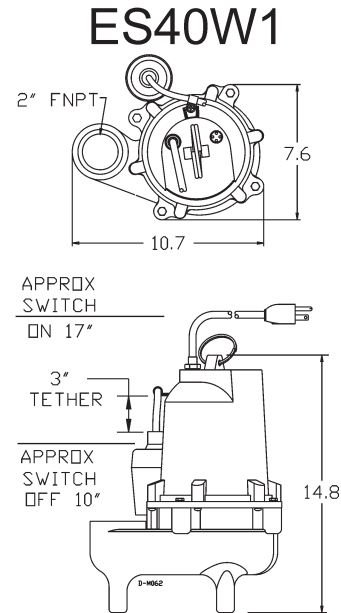
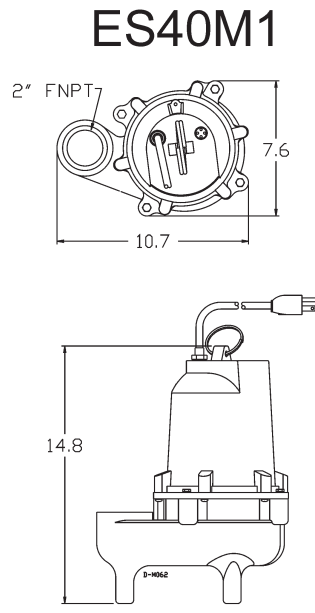
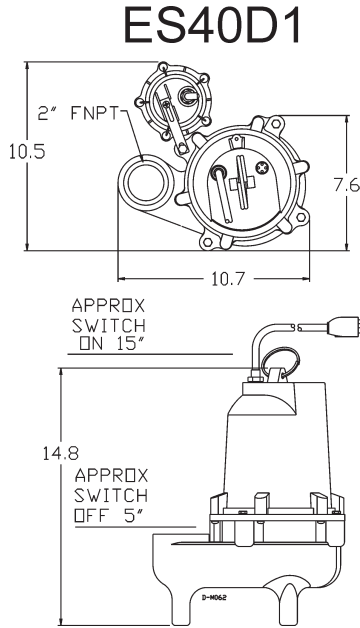
ES 40 Models



Features

- Powerful, 4/10 HP Permanent Split Capacitor (PSC) motor for high starting and running torque, with low amp draw to conserve electrical energy
- Recessed, vortex impeller made of tough, engineered composite materials to reduce clogging; will pass 2" spherical solids
- Bearings: Upper and lower ball bearings for extended life
- Mechanical seal (stainless steel spring, nitrile parts, carbon and ceramic faces) to assure maximum protection against pump failure
- Rugged cast iron pump housing with epoxy coating for corrosion resistance
- Choice of automatic operation:
 - Diaphragm pressure switch
 - Wide angle float switch
- Oil-filled motor housing for lifetime bearing lubrication and maximum heat dissipation
- Stainless steel hardware to protect against corrosion
- Thermal overload protection

Dimensional Outline



Specifications

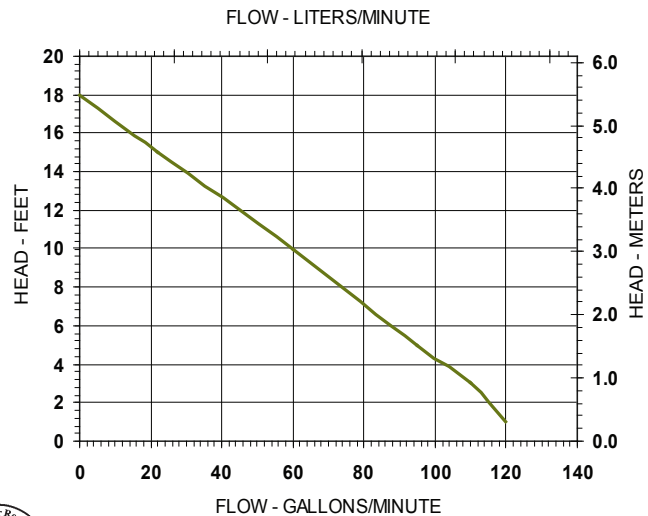
Submersible Sewage Pumps

Model	Item	Listing	HP	Volts/ Hz	Discharge (FNPT)	Solids Handling	Running Amps	5'	10'	15'	Shut Off	PSI	Cord Length	Weight	Dimensions (Inches)		
															H	L	W
ES40M1-10	509460	cCSAus	4/10	115/60	2"	2"	8.9	95	60	22	18	7.8	10	52	14.8	12	9.8
ES40M1-20	509461	cCSAus	4/10	115/60	2"	2"	8.9	95	60	22	18	7.8	20	53	14.8	12	9.8
ES40M2-20	509481	cCSAus	4/10	230/60	2"	2"	4.5	95	60	22	18	7.8	20	53	14.8	12	9.8
ES40W1-10	509540	cCSAus	4/10	115/60	2"	2"	8.9	95	60	22	18	7.8	10	53	14.8	12	9.8
ES40W1-20	509541	cCSAus	4/10	115/60	2"	2"	8.9	95	60	22	18	7.8	20	55	14.8	12	9.8
ES40W2-20	509581	cCSAus	4/10	230/60	2"	2"	4.5	95	60	22	18	7.8	20	55	14.8	12	9.8
ES40D1-10	509560	cCSAus	4/10	115/60	2"	2"	8.9	95	60	22	18	7.8	10	53	14.8	12	9.8
ES40D1-20	509561	cCSAus	4/10	115/60	2"	2"	8.9	95	60	22	18	7.8	20	55	14.8	12	9.8
ES40D2-20	509562	cCSAus	4/10	230/60	2"	2"	4.5	95	60	22	18	7.8	20	55	14.8	12	9.8

Construction

Motor Housing	Epoxy coated cast iron
Impeller Material	Engineered composite
Impeller Type	Recessed, vortex
Volute	Epoxy coated cast iron
Power Cord	16/3 SJTW-A
Mechanical Shaft Seal	Nitrile with carbon and ceramic faces
Fasteners	Stainless steel
Shaft	Cold rolled steel
Bearings	Upper and lower ball bearings

Flow Curve



P.O. Box 12010
Oklahoma City, OK 73157-2010
Phone: 1.800.701.7894
Fax: 1.800.678.7867
www.LittleGiantPump.com

