

Catalog Number
Notes
Type

## FEATURES & SPECIFICATIONS

**INTENDED USE** — The adjustable LED Gimbal downlighting module is 80% more efficient than incandescent luminaires, performing for 35,000 hours or more with exceptional energy efficiency and near zero maintenance. Multiple trim finish options are available to pick the style that matches the décor for any office or home. The LED Gimbal is intended for sloped ceiling applications, grazing textured surfaces, wall washing, and highlighting artwork or other architectural features. Retrofits into most existing recessed downlighting installations or new construction and remodel applications.

**CONSTRUCTION** — Spun steel gimbal reflectors with 180° of rotation and at least 35° of adjustable tilt in both directions. Driver affixed to a static yoke to allow maximization of LED light engine rotation and pivot movements.

**OPTICS** — Diffused lens at end of mixing chamber to provide even light distribution for general illumination, equivalent to 65W incandescent flood lamp.

Wide flood beam angle at >90°. Utilizes 3000 K color temperature LEDs. CRI – 80+. The LED module maintains at least 70% light output for 35,000 hours.

**ELECTRICAL** — Primary power disconnect provided for simple connection to a dedicated LED connector in the housing. Dimming down to 15%. For compatible dimmers, refer to [Compatible Dimmers Chart](#).

Standard input wattage is 10.8 watts, 55 lumens per watt; equivalent to 65-watt incandescent.

**INSTALLATION** — Suitable for installation in standard height rough-in sections. E26 socket adaptor and splice kit ships standard. This enables easy installation or permanent conversion to an LED source for Title 24 compliance. Trim retention is achieved by utilizing two side-mounted torsion springs to ensure a consistently tight fit with the ceiling and easy installation.

**LISTINGS** — CSA certified to US and Canadian safety standards. ENERGY STAR® qualified; California T24 compliant. Damp location listed.

**WARRANTY** — 5-year limited warranty. Complete warranty terms located at [www.acuitybrands.com/CustomerResources/Terms\\_and\\_conditions.aspx](http://www.acuitybrands.com/CustomerResources/Terms_and_conditions.aspx)

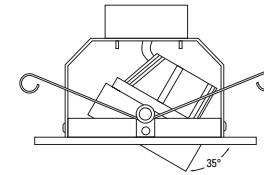
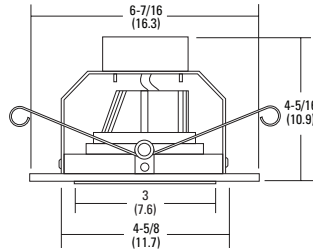
Actual wattage may differ by +/-5% when operating at 120V +/-10%.

Note: Specifications subject to change without notice.

### Specifications

Aperture:	3 (7.6)
Ceiling opening:	as rough-in
Length:	4-5/8 (11.7)
Height:	4-5/16 (10.9)
Overlap trim:	6-7/16 (16.3)

All dimensions are inches (centimeters) unless otherwise indicated.



# 5G1

IC/Non-IC  
Retrofit Gimbal



Matte Black



Brush Nickel



Oil Rubbed Bronze



E26 Adaptor (included)



Hardwire Kit (included)

### ORDERING INFORMATION

For shortest lead times, configure product using **bolded options**.

**Example:** 5G1MW LED L5LED T24

5G1		LED					
Series/Finish		Lamp/Lumen <sup>1</sup>	Color temperature	Voltage	Options		
<u>Series</u>	<u>Finish</u>	<b>LED</b> 600 lumens, 10.8 watts	<b>(blank)</b> 3000K	<b>(blank)</b> 120V	<b>L5LED T24</b>	New construction rough-in (LED connector)	
<b>5G1</b>	<b>5"</b> Gimbal module				<b>L5RLED T24</b>	Remodel rough-in (LED connector)	
	<b>MW</b> Matte white				<b>L5</b>	New construction rough-in <sup>2</sup>	
	<b>MB</b> Matte black				<b>L5R</b>	Remodel rough-in <sup>2</sup>	
	<b>BN</b> Brush nickel						
	<b>ORB</b> Oil-rubbed bronze						

**Accessories:** Order as separate catalog number.

TSA5 Makes non-bracket housings compatible with LED module

### Notes

- 1 Total system delivered lumens.
- 2 Must be ordered on a separate line.

# 5G1 5" LED Gimbal Module - ENERGY STAR®

## PHOTOMETRICS

### Distribution Curve

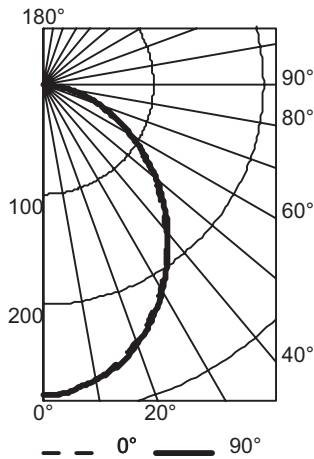
### Distribution Data

### Output Data

### Coefficient of Utilization

### Illuminance Data at 30" Above Floor for a Single Luminaire

5G1MW LED, 3000 K LEDs, input watts: 11.17, delivered lumens: 672, LM/W=60, test no. LTL23565, tested in accordance with IESNA LM 79-80.



#### CP Summary

	0°	90°
0°	282	282
5°	279	280
15°	262	264
25°	231	234
35°	193	197
45°	151	154
55°	109	112
65°	70	72
75°	34	36
85°	6	6
90°	0	0

#### Coefficients of Utilization

pc	20%									
	80%			70%			50%			
	pw	70%	50%	30%	50%	30%	10%	50%	30%	10%
0	119	119	119	116	116	116	111	111	111	
1	109	105	101	103	99	96	98	95	93	
2	100	92	86	90	84	79	87	82	77	
3	92	81	74	80	73	67	77	71	66	
4	84	73	64	71	63	57	69	62	56	
5	78	65	56	64	56	50	62	55	49	
6	72	59	50	58	50	44	56	49	43	
7	67	54	45	53	45	39	51	44	39	
8	62	49	41	48	40	35	47	40	35	
9	58	45	37	45	37	32	43	36	31	
10	55	42	34	41	34	29	40	33	29	

#### Zonal Lumen Summary

Zone	Lumens	% Lamp	% Fixture
0° - 30°	209	31.1	31.1
0° - 40°	332	49.4	49.4
0° - 60°	553	82.2	82.2
0° - 90°	672	100.0	100.0
90° - 180°	0	0.0	0.0
0° - 180°	672	100.0	100.0

ENERGY DATA*	
Lumens	600
Min. starting temp	-18°C (0°F)
EMI/RFI	FCC Title 47 CFR, Part 15, Class B
Sound rating	Class A standards
Input voltage	120V
Min. power factor	0.80
Input frequency	50/60 Hz
Rated wattage	10.8W
Input power	10.8W
Input current	0.11A

\*Values at non-dimming line voltage.

**LED lighting facts®**  
A Program of the U.S. DOE

**Light Output (Lumens)** 600  
**Watts** 10.8  
**Lumens per Watt (Efficacy)** 55

**Color Accuracy**  
Color Rendering Index (CRI) 83

**Light Color**  
Correlated Color Temperature (CCT) 3000 (Bright White)

Warm White | Bright White | Daylight  
2700K | 3000K | 4500K | 6500K

**Warranty\*\*** Yes

All results, except LED Lumen Maintenance, are according to IESNA LM-79-2008: Approved Method for the Electrical and Photometric Testing of Solid-State Lighting. The U.S. Department of Energy (DOE) verifies product test data and results.

\*\* See [www.lightingfacts.com/products](http://www.lightingfacts.com/products) for details.

Registration Number: JB22-V88B3F (6/19/2013)  
Model Number: 5G1 (Upgraded 051413)  
Type: Recessed downlight