

Catalog Number
Notes
Type

FEATURES & SPECIFICATIONS

INTENDED USE — For applications that require the clean appearance of a low-profile, brightness-controlled wraparound. Provides broad distribution of light for offices, schools and corridors. **Certain airborne contaminants can diminish integrity of acrylic.** [Click here for Acrylic Environmental Compatibility table for suitable uses.](#)

Attributes: Curved prismatic diffuser with linear side prisms minimize lamp image and provides high angle brightness control. Luminous end plates soften appearance for improved aesthetics.

CONSTRUCTION — Metal parts are die formed from code-gauge steel. Prismatic diffuser is 100% acrylic with sonically welded luminous ends. Continuous side flanges on fixture body provide light trap and continuous diffuser support to prevent accidental opening and simplify maintenance.

Finish: Five stage iron-phosphate pretreatment assure superior paint adhesion and rust resistance.

Painted parts finished with high-gloss, high-reflectivity baked white polyester enamel (low VOC).

ELECTRICAL — Thermally-protected, resetting, Class P, HPF, non-PCB, UL Listed, CSA Certified ballast is standard. Luminaire is suitable for damp locations. AWM, TFN or THHN wire used throughout, rated for required temperatures.

UL/CSA listed ballast disconnect w/strain relief and leads provided standard.

LISTINGS — UL Listed (standard). Optional: Canada CSA or C-UL. Mexico NOM.

WARRANTY — 1-year limited warranty. Complete warranty terms located at www.acuitybrands.com/CustomerResources/Terms_and_conditions.aspx

Note: Specifications subject to change without notice.

Low-Profile Wraparound



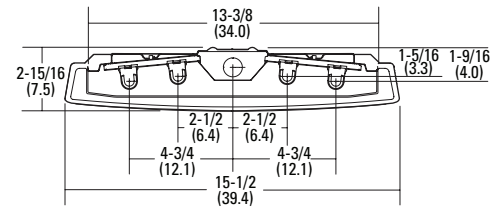
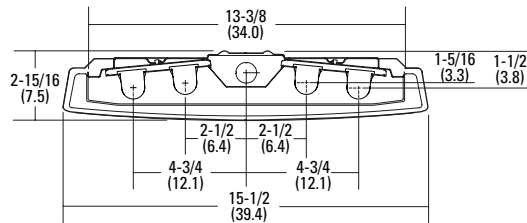
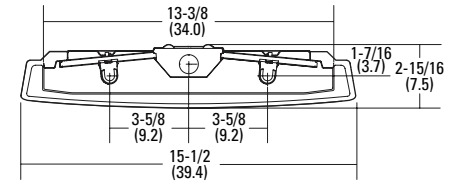
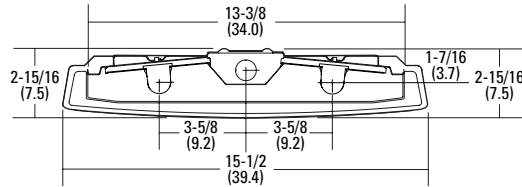
LB

T5 and T8
WIDE BODY
4' length
2 or 4 lamps

Specifications

T8 Length:	48 (121.9)
T5 Length:	46-1/2 (118.1)
Width:	15-1/2 (39.4)
Height:	2-15/16 (7.5)

All dimensions are inches (centimeters) unless otherwise indicated.



ORDERING INFORMATION

For shortest lead times, configure product using **standard options (shown in bold)**.

Example: LB 4 32 MVOLT GEB10IS

Series	Number of lamps	Lamp type	Voltage	Options
LB	4 lamps, 15-1/2" wide	17 17W T8 (24")	120	1/4 One, four-lamp ballast
2LB	2 lamps, 15-1/2" wide	32 32W T8 (48")	277	GEB10IS Electronic ballast, ≤10% THD, instant start
	For tandem double-length unit, add prefix T. Example: TLB	14T5 14W T5 (22-1/2") ¹	347	GEB10PS Electronic ballast, ≤10% THD, programmed start
		28T5 28W T5 (46-1/2")	MVOLT	EL Emergency battery pack (nominal 300 lumens, see Life Safety Section)
		54T5HO 54W T5HO (46-1/2") ²	Others available.	GLR Internal fast-blow fuse ³
				GMF Internal slow-blow fuse ³
				CSA Listed and labeled to comply with Canadian Standards
				SSR Specular silver interior finish (95% reflective)

Accessories: Order as separate catalog number.

SQ_	Swivel-stem hanger (specify in 2" increments).
1B	Ceiling spacer (adjusts from 1-1/2" to 2-1/2" from ceiling).

Notes

- Not available in 4 lamp.
- T5HO only available in two-lamp configuration.
- Must specify voltage.

LB Low-Profile Wraparound, Wide Body

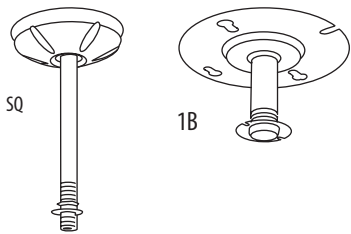
MOUNTING DATA

For unit or row installation, surface or stem mounting. Stem mounting not available on TLB units.

Individual installation — Two single-stem hangers required.

Row installation — One hanger per fixture plus one per row required.

See ACCESSORIES below for hanging devices.



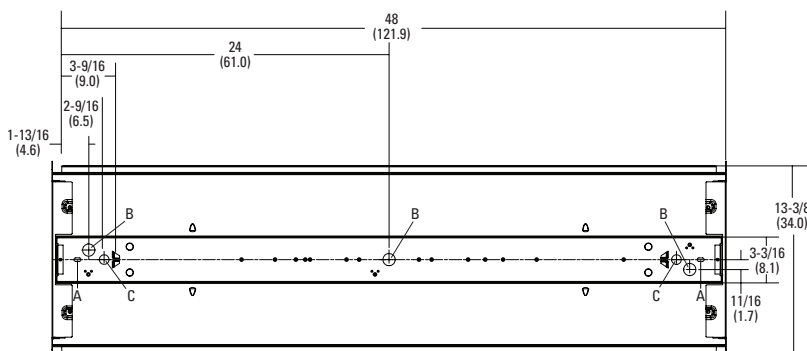
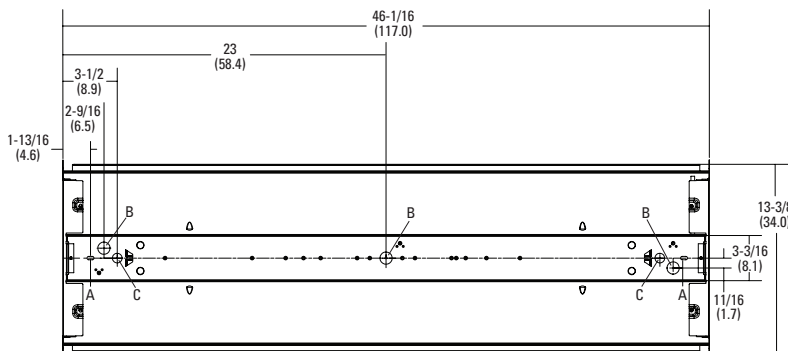
A = 1/4 x 1/2 (.635 x 1.27) Oval Hole

B = 7/8 (2.22) Dia. K.O.

C = 11/16 (1.74) Dia. K.O.

DIMENSIONS

All dimensions are inches (centimeters) unless otherwise indicated. Specifications subject to change without notice.



PHOTOMETRICS

Calculated using the zonal cavity method in accordance with IESNA LM41 procedure. Floor reflectances are 20%. Lamp configurations shown are typical. Full photometric data on these and other configurations available upon request.

LB 4 32

Report LTL 5614 - Lumens per lamp = 2900

S/MH (along) 1.2 (across) 1.3

Coefficient of Utilization

Ceiling	80%			70%			50%			0%
Wall	70%	50%	30%	70%	50%	30%	50%	30%	10%	0%
0	89	89	89	86	86	86	80	80	80	68
1	81	78	75	78	75	73	71	69	67	58
2	75	69	64	72	67	63	63	59	56	50
3	69	62	56	66	60	55	57	52	49	43
4	63	55	49	61	54	48	51	46	42	38
5	58	49	43	56	48	42	45	40	36	33
6	54	44	38	52	43	37	41	36	32	29
7	50	40	34	48	39	33	37	32	28	25
8	46	36	30	44	35	29	33	28	24	22
9	42	32	26	41	31	26	30	25	21	19
10	39	29	23	38	29	23	27	22	19	16

Zonal Lumens Summary

Zone	Lumens	%Lamp	%Fixture
0-30	2376	20.5	27.0
0-40	3914	33.7	44.1
0-60	6499	56.0	73.7
0-90	7883	68.0	89.4
90-180	932	8.0	10.6
0-180	8815	76.0	100.0