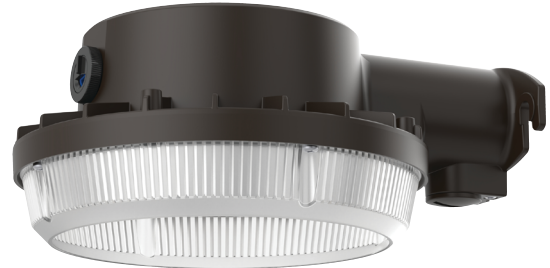




| |
|----------------|
| Catalog Number |
| Notes |
| Type |

Contractor Select™
BGS LED
 Security Light



BGS LED security lights are the affordable area light for illuminating large areas including yards, farms, pathways, entrances, or any general illumination needs. Ideal for replacing up to 150W metal halide traditional sources, the BGS mounts directly to walls, poles, or with a mounting arm accessory. Efficient LEDs provide years of worry-free operation. Available in two performance packages, the BGS can replace up to 100W(P1) or 150W metal halide(P2) light sources.

FEATURES:

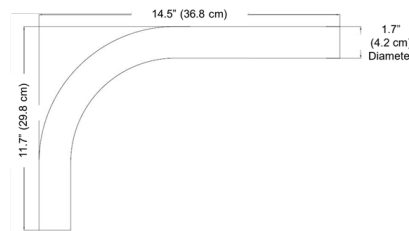
- Replaces up to 150W traditional light sources
- Adjustable dusk to dawn photocell
- Available in two sizes:
 - P1 - 4,000 lumens
 - P2 - 6,000 lumens
- Switchable CCT - offers warm, cool and daylight in a single fixture (P2 only)
- IP65 rated



| Catalog Number | CI CODE | UPC | Lumens | Wattage | Voltage | CCT | Finish | Replaces Up To | Pallet Quantity |
|-----------------------------|---------|--------------|--------|---------|----------------|--------------------------|--------|-------------------|-----------------|
| BGS P1 40K 120 PE DDB M2 | *27702K | 196182551291 | 4000L | 35 | 120V | 4000K | DDB | 100W Metal Halide | 160 |
| BGS P2 SWW2 MVOLT PE DDB M2 | *27702N | 196182551277 | 6000L | 45 | MVOLT 120-277V | SWW2 3000K, 4000K, 5000K | DDB | 150W Metal Halide | 120 |

More configurations are available. [Click here](#) or visit www.acuitybrands.com and search for BGR LED.

| | |
|---|----------------|
| Accessories: Order as separate catalog number. | |
| OMA | Mounting Arm |
| CI Code | *136XUY |
| UPC Code | 00745973700907 |





Specifications

INTENDED USE:

BGS LED is the affordable choice to illuminate yards, alleyways, farms, or doorways. The BGS P1 is well suited for residential applications while the BGS P2 is ideal for residential or commercial installations.

CONSTRUCTION:

IP65 rated, die-cast aluminum housing with an impact-resistant, polycarbonate lens. Removable diffuser provides some up-light and while also reducing uncomfortable glare.

ELECTRICAL:

Energy-efficient LEDs are mounted on the integral aluminum heat sink to maximize heat dissipation and promote long LED life.

BGS P1: 120V only, 2.5kv surge protection,

BGSP2: MVOLT(120-277V) utilize 0-10V continuous dimming capable drivers to ensure system power factor >90% and THD <20%. Standard 6kVsurge protection tested in accordance with ANSI/IEEE C62.41.2. Category C. Switchable CCT includes between 3000K(warm), 4000K(neutral) or 5000K(daylight)

INSTALLATION:

Mounts directly to wooden posts or poles using (3) 2" lag bolts (included) or can be used with an existing 1-5/8" mounting arm. Can also be installed using the Lithonia Lighting OMA mounting arm (sold separately).

LISTINGS:

UL Listed to U.S. and Canadian safety standards for wet locations. for -40°C minimum ambient.

BGS P1: Energy Star

BGS P2: DesignLights Consortium® (DLC) qualified product. Please check the DLC Qualified Products List at www.designlights.org/QPL to confirm.

WARRANTY:

5-year limited warranty. This is the only warranty provided and no other statements in this specification sheet create any warranty of any kind. All other express and implied warranties are disclaimed. Complete warranty terms located at:

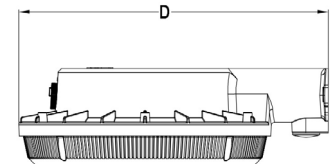
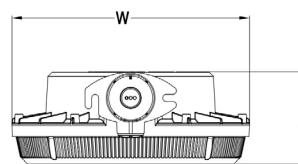
www.acuitybrands.com/support/warranty/terms-and-conditions

Note: Actual performance may differ as a result of end-user environment and application. All values are design or typical values, measured under laboratory conditions at 25 °C. Specifications subject to change without notice.

Dimensions

All dimensions are inches (centimeters) unless otherwise indicated.

| Luminaire | Depth (D) | Width (W) | Height (H) | Backplate Width (W) | Fixture Weight |
|-----------|-------------------|------------------|---------------|---------------------|---------------------|
| BGS P1 | 8.83" (22.4cm) | 7" (17.6cm) | 3.5" (9cm) | 2-3/4" (7.0cm) | 1.52lbs (0.69kg) |
| BGS P2 | 11.3" (28.7cm) | 9.3" (23.5cm) | 3.5" (9cm) | 2-3/4" (7.0cm) | 2.26lbs (1.03kg) |

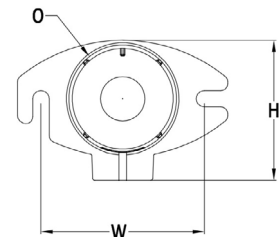


BACKPLATE:

Width: 2-3/4" (7 cm)

Height: 2-3/8" (6 cm)

Opening: 1-3/4" (4.5 cm)



Electrical Characteristics

| Series | Delivered Lumens | Input Power | Electrical Load | | | |
|--------|------------------|-------------|-----------------|------|------|------|
| | | | Current (A) | | | |
| | | | 120V | 208V | 240V | 277V |
| BGS | 4,000L | 34 | 0.29 | | | |
| | 6,000L | 45 | 0.38 | 0.22 | 0.19 | 0.17 |