



Catalog Number
Notes
Type

Contractor Select™

SPODMRA Series

Dimming Wall Switch

The push-button Dimming Series of wall stations are a cost-effective solution for commercial lighting applications. Additionally, all sPODMRA switches have a patent pending wiring method that enables them to function either with or without a neutral connection. sPODMRA units come preconfigured for wiring without a neutral, however, if a connection to neutral is required by code, contractors can convert the unit in seconds.

FEATURES:

- Programmable without removing switch plate
- Connect up to 9 devices with neutral wiring or up to 2 devices without neutral wiring on a single traveler
- sPODMRA MWO can be used in conjunction with WSXA MWO
- Compatible with 0-10V dimming, Sinks < 50 mA
- Include Screwless Wall Plate: Available in WH
- Each MWO device can switch and dim individually
- Switching and Dimming will be performed simultaneously across the devices connected through the communication wire



Catalog Number	UPC	Description	Voltage Type	Color	Voltage	Pallet Quantity
SPODMRA MWO D WH	00194994788584	Dimming Wall Switch	Line	White	120 to 277V	100

More configurations are available. Please visit www.acuitybrands.com and search for SPODMRA Series.

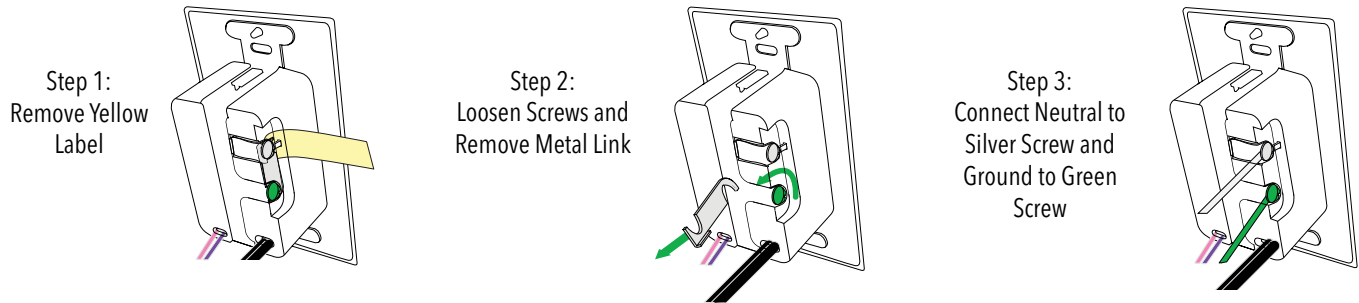


Specifications

INSTALLATION:

CONVERSION FROM GROUND ONLY (NO NEUTRAL) TO NEUTRAL WIRING

This product is pre-configured for wiring without a neutral; however, if connection to neutral is required by code, the unit easily converts in seconds.



LISTINGS:

cULus Listed

For use in ambient operating temperatures ranging from -0°C to 60°C.

WARRANTY:

5-year limited warranty. Complete warranty terms located at:

www.acuitybrands.com/support/warranty/terms-and-conditions

Note: Actual performance may differ as a result of end-user environment and application. Specifications subject to change without notice.

Dimensions

2.74"H x 1.68"W x 1.63"D (70mm x 43mm x 41mm) - does not include ground strap