



Catalog Number
Notes
Type

Contractor Select™

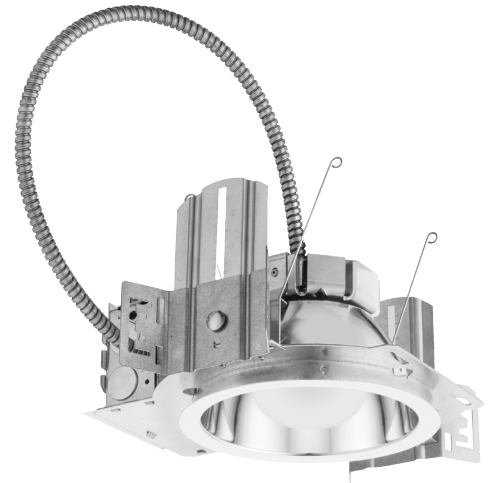
# Lithonia LDN

## LED Commercial Downlight

LDN 6" downlights are the most cost-effective general illumination solutions for commercial-grade downlight applications. The LDN4 and LDN6 designs allow for a quiet, glare-free ceiling without compromising on efficacy.

**FEATURES:**

- 55° cutoff
- 80-90 Lumens/Watt
- 1.0 Spacing/Mounting Height ratio
- Open wallwash kicker also available
- MVOLT (120-277V) 0-10V 10% dimming
- Available in 1000lm, 1500lm, or 2000lm



Catalog Number	UPC	Description	Replaces Up To	Lumens	Input Watts	CCT	CRI	Voltage	Pallet qty.
LDN6 35/10 MVOLT GZ10 HSG	00193048377323	6" New Construction Non-IC LED Housing, 1000lm, 10% 0-10V dimming	26W CFL	1,000	11W	3500K	80	120-277	84
LDN6 35/15 MVOLT GZ10 HSG	00193048375787	6" New Construction Non-IC LED Housing, 1500lm, 10% 0-10V dimming	32W CFL	1,500	18W	3500K	80	120-277	84
LDN6 35/20 MVOLT GZ10 HSG	00193048380026	6" New Construction Non-IC LED Housing, 2000lm, 10% 0-10V dimming	42W CFL	2,000	22W	3500K	80	120-277	84
LDN4 35/10 MVOLT GZ10 HSG	00193048378481	4" New Construction Non-IC LED Housing, 1000lm, 10% 0-10V dimming	26W CFL	1,000	11W	3500K	80	120-277	84
LDN4 35/15 MVOLT GZ10 HSG	00193048372816	4" New Construction Non-IC LED Housing, 1500lm, 10% 0-10V dimming	32W CFL	1,500	18W	3500K	80	120-277	84
LDN4 35/20 MVOLT GZ10 HSG	00193048377873	4" New Construction Non-IC LED Housing, 2000lm, 10% 0-10V dimming	42W CFL	2,000	22W	3500K	80	120-277	84
L06AR LSS TRIM	00745972691619	6" Open reflector with clear, semi-specular finish							180
LW6AR LSS TRIM	00190887157093	6" Open wallwash with clear, semi-specular finish							180
L04AR LSS TRIM	00745972691343	4" Open reflector with clear, semi-specular finish							180
LW4AR LSS TRIM	00190887165678	4" Open wallwash with clear, semi-specular finish							180

More configurations are available. [Click here](#) or visit [www.acuitybrands.com](http://www.acuitybrands.com) and search for LDN

<b>Accessories:</b> Order as separate catalog number.	
PS1055CP	FMC Power Sentry battery pack, T20 compliant, field installable, 10w constant power
<a href="#">EAC ISSM 375</a>	Compact interruptible emergency AC power system
<a href="#">EAC ISSM 125</a>	Compact interruptible emergency AC power system
GRA68 JZ	Oversized trim ring with 8" outside diameter
SCA_	Sloped ceiling adapter. Replace _ with 4 or 6 depending on aperture size. Refer to TECH-SCA for more options.

<b>Emergency Battery Delivered Lumens</b>
Use the formula below to determine the delivered lumens in emergency mode
<b>Delivered Lumens = 1.25 x P x LPW</b>
<b>P</b> = Output power of emergency driver (10W for PS1055)
<b>LPW</b> = Lumen per watt rating of the luminaire.



## Specifications

### INTENDED USE:

Typical applications include corridors, lobbies, conference rooms and private offices.

### CONSTRUCTION:

Galvanized steel mounting/plaster frame; galvanized steel junction box with bottom-hinged access covers and spring latches.

Reflectors are retained by torsion springs.

Vertically adjustable mounting brackets with commercial bar hangers provide 3-3/4" total adjustment.

Two combination 1/2"-3/4" and four 1/2" knockouts for straight-through conduit runs. Capacity: 8 (4 in, 4 out). No. 12 AWG conductors, rated for 90°C.

Accommodates 12"-24" joist spacing.

Passive cooling thermal management for 25°C ambient

Light engine and drivers are accessible from above or below ceiling.

Max ceiling thickness 1-1/2".

### OPTICS:

LEDs are binned to a 3-step SDCM; 80 CRI minimum.

LED light source concealed with diffusing optical lens.

General illumination lighting with 1.0 S/MH and 55° cutoff to source and source image.

Self-flanged anodized reflectors in semi-specular finish.

### ELECTRICAL:

Multi-volt (120-277V, 50/60Hz) 0-10V dimming drivers mounted to junction box, 10% minimum dimming level available.

0-10V dimming fixture requires two (2) additional low-voltage wires to be pulled.

70% lumen maintenance at 60,000 hours.

### LISTINGS:

Certified to US and Canadian safety standards. Wet location standard (covered ceiling).

IP55 rated. ENERGY STAR® certified product. More configurations are available. Click here or visit [www.acuitybrands.com](http://www.acuitybrands.com) and search for LDN.

### WARRANTY:

5-year limited warranty. Complete warranty terms located at:

[www.acuitybrands.com/support/customer-support/terms-and-conditions](http://www.acuitybrands.com/support/customer-support/terms-and-conditions)

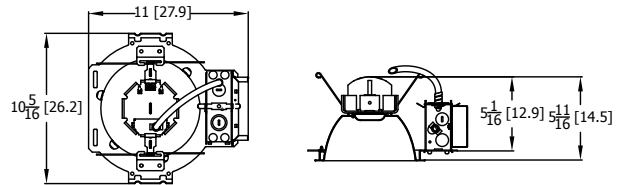
**Note:** Actual performance may differ as a result of end-user environment and application.

All values are design or typical values, measured under laboratory conditions at 25 °C.

Specifications subject to change without notice.

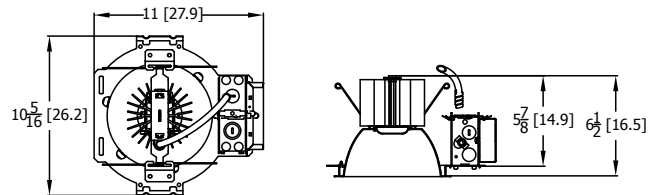
## Dimensions

### LDN6 500-1500 LUMEN



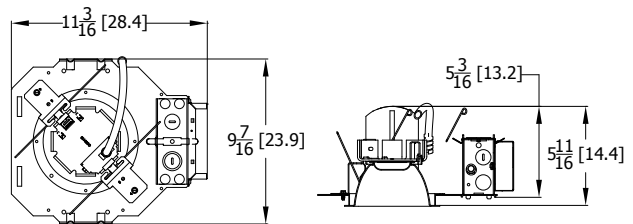
Aperture: 6-1/4 (15.9)  
Ceiling Opening: 7-1/8 (18.1)  
Overlap trim: 7-1/2 (19.1)

### LDN6 2000 LUMEN



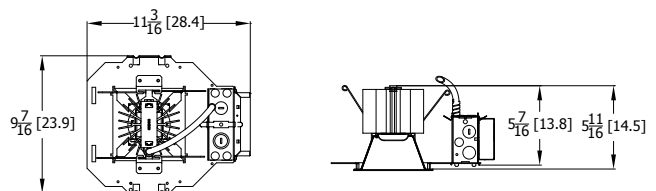
Aperture: 6-1/4 (15.9)  
Ceiling Opening: 7-1/8 (18.1)  
Overlap trim: 7-1/2 (19.1)

### LDN4 500-1500 LUMEN



Aperture: 4-5/16 (11)  
Ceiling Opening: 5-1/8 (13)  
Overlap trim: 5-7/16 (13.8)

### LDN4 2000 LUMEN



Aperture: 4-5/16 (11) Square  
Ceiling Opening: 5-1/8 (13) Square  
Overlap trim: 5-7/16 (13.8) Square

All dimensions are inches (centimeters) unless otherwise indicated.