

Catalog Number	<b>PRELIMINARY</b>
Notes	
Type	

## FEATURES & SPECIFICATIONS

**INTENDED USE** — The 3" Wafer-Thin LED gimbal with remote driver box combines high quality light output and efficiency while eliminating the pot light housing for competitive affordability. This innovate wafer-slim Type IC design allows easy installation for new construction or remodel from below the ceiling without the requirement of a pot light housing for insulation. The LED module maintains at least 70% light output for 36,000 hours. These LED Wafer gimbals are intended for closets, attics, hallways, bathrooms, kitchens, basements, soffits, entry ways, porches, garages, stairwells, corridors, nursing/retirement homes, condos, elevators, apartments, and any other small areas.

**CONSTRUCTION** — IC rated driver and fixture - approved for direct contact with insulation. Aluminum die cast outer frame. Durable, powder coat paint to prevent rust. Round fixture with integral edge-lit LED's. Plenum rated cable connector to connect from module to remote driver box. Isolated driver integrated inside steel remote box with four 7/8" knockouts with slots for pryout. Suitable for pulling wires with the 12 cubic-inch wiring compartment to accommodate up to (8) 14 gauge insulated conductors, or (6) 12 gauge insulated conductors; making the Wafer LED Downlights much easier to wire in 2in/2out (plus ground) daisy-chain applications and contractor friendly.

**INSTALLATION** — Ideal for shallow ceiling plenum; no housing required. Steel spring clip for easy installation. 3" cut out template is provided to ensure a correct sized hole is cut into ceiling for proper installation of the trim. Size of hole should not exceed 3 1/8 inches for this product. Suitable for installation in t-grid and drop ceiling applications. 6" plenum space required for installation of remote driver box.

**OPTICS** — Polycarbonate lens provides even illumination throughout the space. Utilizes 3500K and 5000K option color temperature LEDs. Lens can be tilt up to 20 degrees and rotate up to 180 degrees.

**ELECTRICAL** — Connect directly to 120V power supply via provided UL recognized driver. Driver and Fixture Wet location approved and IC rated. High efficient driver with power factor > 0.9. Ambient operating temperature: -40°F (-40°C) to +104°F (+40°C). Dimming down to 10% (See page 2 for recommended dimmers). Standard input wattage is 8W, 68 lumens per watt. Actual wattage may differ by +/- 5% when operating at 120V +/- 10%. Replaces 50W incandescent.

**LISTINGS** — CSA certified to US and Canadian safety standards. ENERGY STAR® qualified. Wet location. Air Tight certified in accordance with ASTM E283-2004. NOM certified.

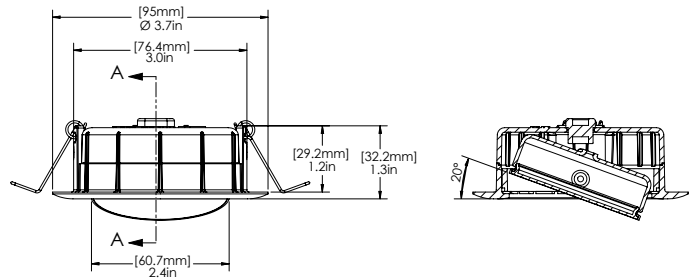
**WARRANTY** — 5-year limited warranty. Complete warranty terms located at: [www.acuitybrands.com/CustomerResources/Terms\\_and\\_conditions.aspx](http://www.acuitybrands.com/CustomerResources/Terms_and_conditions.aspx)

**Note:** Actual performance may differ as a result of end-user environment and application. All values are design or typical values, measured under laboratory conditions at 25 °C. Specifications subject to change without notice.

### Specifications

Aperture:	2.4 (6.1)
Ceiling opening:	3 (7.6)
Overlap trim:	3.7 (9.4)
Height:	1.3 (3.3)

All dimensions are inches (centimeters) unless otherwise indicated.



Wafer LED Gimbal

# WF3 ADJ

## 3" LED Wafer Gimbal

IC/Non-IC  
New Construction/Remodel



Matte black



Brushed nickel



Oil-rubbed bronze

### ORDERING INFORMATION

Example: WF3 ADJ LED 27K MW

WF3 ADJ	LED						
Series	Lamp	CCT/W/Lumens <sup>1</sup>		CRI		Finish	
WF3 ADJ 3" LED Wafer Gimbal	LED LED	<b>27K</b>	2700K/7.7W/520L	<b>90CRI</b>	90 CRI	<b>MW</b>	Matte white
		<b>30K</b>	3000K/7.5W/530L			<b>MB</b>	Matte black
		<b>35K</b>	3500K/7.5W/540L			<b>BN</b>	Brushed nickel
		<b>40K</b>	4000K/7.6W/545L			<b>ORB</b>	Oil-rubbed bronze
		<b>50K</b>	5000K/7.7W/550L				

### Accessories: Order as separate catalog number.

WF3 PAN R12	3" new construction pan, retail pack of 12
WF8643 PAN	Wafer Universal Pan
WFEXC6 U	6' FT4 cable
WFEXC10 U	10' FT4 cable
WFEXC20 U	20' FT4 cable



WF3\_Pan



WF8643 PAN



Extension Cable

### Notes

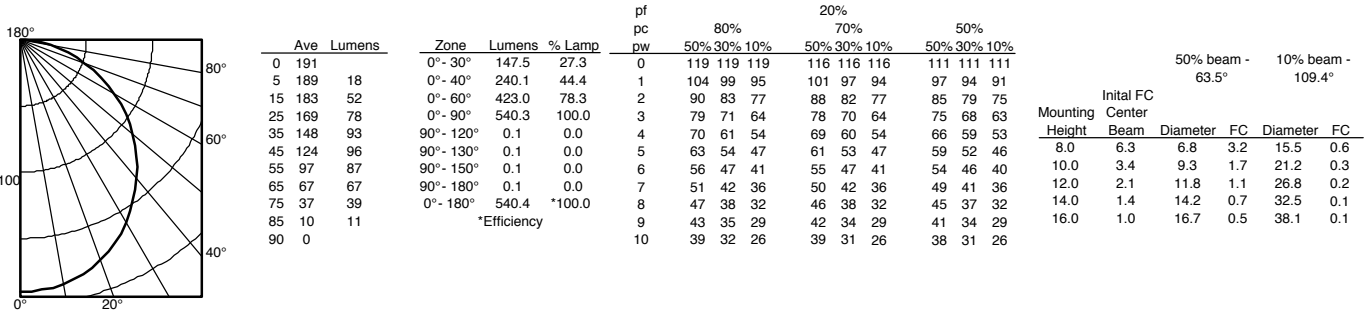
1 Total system delivered lumens.

# WF3 ADJ 3" LED Wafer Gimbal

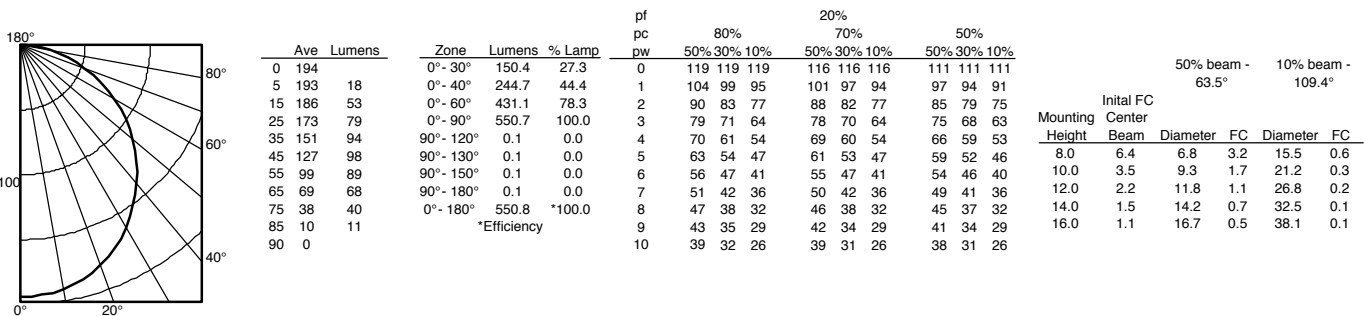
## PHOTOMETRICS

**Distribution Curve      Distribution Data      Output Data      Coefficient of Utilization      Illuminance Data at 30" Above Floor for a Single Luminaire**

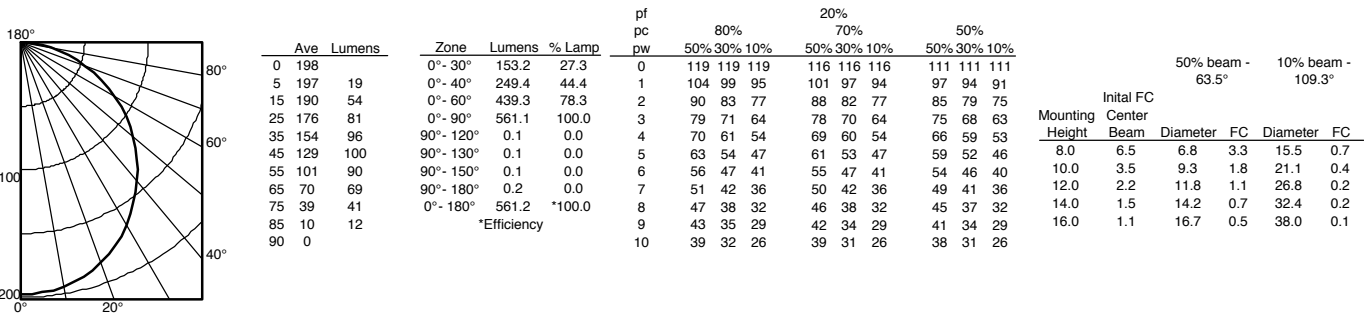
### WF3 ADJ LED 27K, 2700 K LEDs, 7.7 watts, 540.5 lumens, 70.2 lm/w. test no. ISF 19684P13



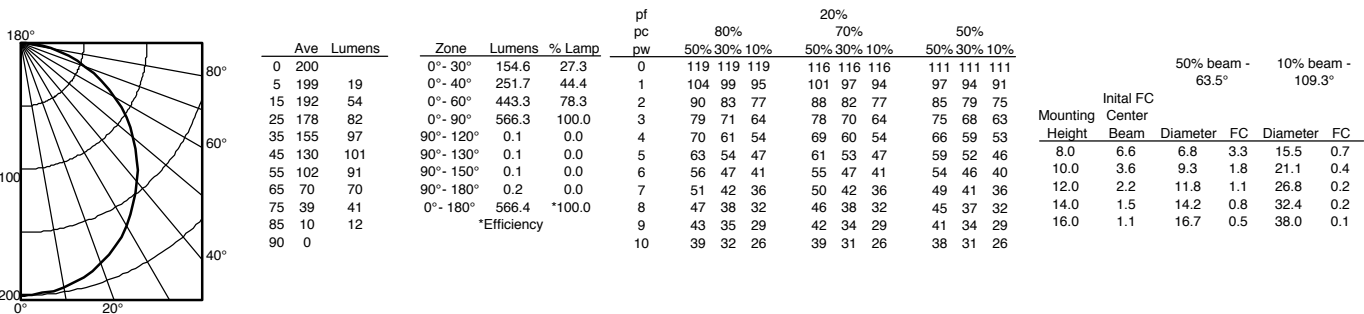
### WF3 ADJ LED 30K, 3000 K LEDs, 7.5 watts, 550.9 lumens, 73.5 lm/w. test no. ISF 19684P14



### WF3 ADJ LED 35K, 3500 K LEDs, 7.5 watts, 561.3 lumens, 74.8 lm/w. test no. ISF 19684P15



### WF3 ADJ LED 40K, 4000 K LEDs, 7.6 watts, 566.5 lumens, 74.5 lm/w. test no. ISF 19684P16

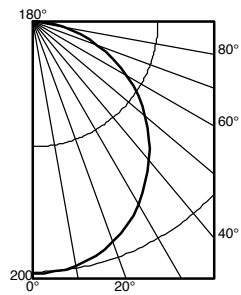


# WF3 ADJ 3" LED Wafer Gimbal

## PHOTOMETRICS (continued)

**Distribution Curve      Distribution Data      Output Data      Coefficient of Utilization      Illuminance Data at 30" Above Floor for a Single Luminaire**

**WF3 ADJ LED 50K**, 5000 K LEDs, 7.7 watts, 571.6 lumens, 74.2 lm/w, test no. ISF 19684P17



Ave Lumens	Zone	Lumens	% Lamp	pf	80%			20%			50%		
					pc	50%	30%	10%	70%	50%	30%	10%	50%
0	0°- 30°	156.0	27.3	0	119	119	119	116	116	116	111	111	111
5	0°- 40°	254.0	44.4	1	104	99	95	101	97	94	97	94	91
15	0°- 60°	447.4	78.3	2	90	83	77	88	82	77	85	79	75
25	0°- 90°	571.5	100.0	3	79	71	64	78	70	64	75	68	63
35	90°- 120°	0.1	0.0	4	70	61	54	69	60	54	66	59	53
45	90°- 130°	0.1	0.0	5	63	54	47	61	53	47	59	52	46
55	90°- 150°	0.1	0.0	6	56	47	41	55	47	41	54	46	40
65	90°- 180°	0.2	0.0	7	51	42	36	50	42	36	49	41	36
75	0°- 180°	571.6	*100.0	8	47	38	32	46	38	32	45	37	32
85			*Efficiency	9	43	35	29	42	34	29	41	34	29
90				10	39	32	26	39	31	26	38	31	26

Mounting Height	Initial FC Center		50% beam - 63.5°		10% beam - 109.3°	
	Beam	Diameter	FC	Diameter	FC	FC
8.0	6.7	6.8	3.3	15.5	0.7	
10.0	3.6	9.3	1.8	21.1	0.4	
12.0	2.2	11.8	1.1	26.8	0.2	
14.0	1.5	14.2	0.8	32.4	0.2	
16.0	1.1	16.7	0.6	38.0	0.1	

# WF3 ADJ 3" LED Wafer Gimbal

## ENERGY DATA

WF3 ADJ LED 27K 90CRI	
Lumens	520
Color Temperature	2700K
CRI	90
Lu/Watts	67.5
Min. starting temp	-40°C (-40°F)
EMI/RFI	FCC Title 47 CFR, Part 15, Class B
Sound rating	Class A Standards
Input voltage	120V
Min. power factor	0.97
Input frequency	50/60 Hz
Rated wattage	7.7W
Input power	7.7W
Input current	0.06A
Input current	0.07A

WF3 ADJ LED 30K 90CRI	
Lumens	530
Color Temperature	3000K
CRI	90
Lu/Watts	70.7
Min. starting temp	-40°C (-40°F)
EMI/RFI	FCC Title 47 CFR, Part 15, Class B
Sound rating	Class A Standards
Input voltage	120V
Min. power factor	0.97
Input frequency	50/60 Hz
Rated wattage	7.5W
Input power	7.5W
Input current	0.06A
Input current	0.07A

WF3 ADJ LED 35K 90CRI	
Lumens	540
Color Temperature	3500K
CRI	90
Lu/Watts	72
Min. starting temp	-40°C (-40°F)
EMI/RFI	FCC Title 47 CFR, Part 15, Class B
Sound rating	Class A Standards
Input voltage	120V
Min. power factor	0.97
Input frequency	50/60 Hz
Rated wattage	7.5W
Input power	7.5W
Input current	0.06A
Input current	0.07A

WF3 ADJ LED 40K 90CRI	
Lumens	545
Color Temperature	4000K
CRI	90
Lu/Watts	71.7
Min. starting temp	-40°C (-40°F)
EMI/RFI	FCC Title 47 CFR, Part 15, Class B
Sound rating	Class A Standards
Input voltage	120V
Min. power factor	0.97
Input frequency	50/60 Hz
Rated wattage	7.6W
Input power	7.6W
Input current	0.06A
Input current	0.07A

WF3 ADJ LED 50K 90CRI	
Lumens	550
Color Temperature	5000K
CRI	90
Lu/Watts	71.4
Min. starting temp	-40°C (-40°F)
EMI/RFI	FCC Title 47 CFR, Part 15, Class B
Sound rating	Class A Standards
Input voltage	120V
Min. power factor	0.97
Input frequency	50/60 Hz
Rated wattage	7.7W
Input power	7.7W
Input current	0.06A
Input current	0.07A