

## FEATURES & SPECIFICATIONS

**INTENDED USE** — The CLX is a linear lighting solution that is available in multiple lengths, lumen packages and distributions. Designed for versatility, the CLX can address virtually any indoor lighting need. The CLX is also offered in standard and high efficacy configurations and capable of being continuous row mounted or installed as a stand-alone fixture. Ideal for uplight and downlight in commercial, retail, manufacturing, warehouse, and display applications. **Certain airborne contaminants can diminish the integrity of acrylic and/or polycarbonate. [Click here for Acrylic-Polycarbonate Compatibility table for suitable uses.](#)**

**CONSTRUCTION** — Channel and cover are formed from code-gauge cold-rolled steel.

Finish: Paint options include high-gloss, baked white polyester (WH), galvanized (GALV), matte black (MB) and smoke gray (SKGY). Five-stage iron phosphate pre-treatment ensures superior paint adhesion and rust resistance. Housing and lens endcaps are injection molded plastic to provide a more architectural look and feel. The endcaps come standard with a knock out for continuous mounting but can be ordered without.

**OPTICS** — Offered in lens and less lens configurations. Provides a choice of optical distributions including, wide, narrow, and aisle.

**ELECTRICAL** — Utilizes high-output LEDs integrated on a two-layer circuit board, ensuring cool-running operation. Optional internal pluggable wiring harness for reduced labor cost in row mounting applications. (See PLR\_ ordering information on page 8.) Electronic LED driver is rated for 75 input watts maximum (see Operational Data on page two for actual wattage consumption), multi-volt input and 0-10V dimming standard. This fixture is designed to withstand a maximum line surge of 2.5kV at 0.75kA combination wave for indoor locations, for applications requiring higher level of protection additional surge protection must be provided.

Enabled with Atrius™ - The CLX is enabled with Atrius™, making it part of the Atrius™ Sensory Network and ready to deliver valuable data and connectivity to the Atrius™ Platform. For more information concerning Atrius™ solutions, please refer to [www.acuitybrands.com/atrus](http://www.acuitybrands.com/atrus).

LEDs provide nominal 80 CRI or 90CRI at 3000 K, 3500 K, 4000 K, or 5000 K.

Lumen output up to 2,500 lumens per foot.

**INSTALLATION** — Fixture may be ceiling or wall mounted (with or without THCLX hanger or angle mounted with CLXANGBRT), pendant or stem mounted with appropriate mounting options.

**LISTINGS** — CSA certified to US and Canadian safety standards. For use in damp locations between -4°F (-20°C) and 104°F (40°C). Optional High Ambient (HA) ranging to 122°F(50°C) available on certain lumen packages.

**WARRANTY** — 5-year limited warranty. Complete warranty terms located at: [www.acuitybrands.com/CustomerResources/Terms\\_and\\_conditions.aspx](http://www.acuitybrands.com/CustomerResources/Terms_and_conditions.aspx)

**Note:** Actual performance may differ as a result of end-user environment and application. All values are design or typical values, measured under laboratory conditions at 25 °C. Specifications subject to change without notice.

**Stock configurations are offered for shorter lead times:**

| Stock Part Number                      | UPC            |
|--|----------------|
| CLX L48 3000LM FDL MVOLT 40K 80CRI WH  | 00191723525816 |
| CLX L48 3000LM FDL MVOLT 50K 80CRI WH  | 00191723525885 |
| CLX L48 5000LM FDL MVOLT 40K 80CRI WH  | 00191723525939 |
| CLX L48 5000LM FDL MVOLT 50K 80CRI WH  | 00191723525908 |
| CLX L96 6000LM FDL MVOLT 40K 80CRI WH  | 00191723525861 |
| CLX L96 6000LM FDL MVOLT 50K 80CRI WH  | 00191723525915 |
| CLX L96 10000LM FDL MVOLT 40K 80CRI WH | 00191723525922 |
| CLX L96 10000LM FDL MVOLT 50K 80CRI WH | 00191723525830 |
| CLX L48 3000LM RDL MVOLT 40K 80CRI WH  | 00191723525960 |
| CLX L48 3000LM RDL MVOLT 50K 80CRI WH  | 00191723525892 |
| CLX L48 5000LM RDL MVOLT 40K 80CRI WH  | 00191723525854 |
| CLX L48 5000LM RDL MVOLT 50K 80CRI WH  | 00191723525946 |
| CLX L96 6000LM RDL MVOLT 40K 80CRI WH  | 00191723525878 |
| CLX L96 6000LM RDL MVOLT 50K 80CRI WH  | 00191723525823 |
| CLX L96 10000LM RDL MVOLT 40K 80CRI WH | 00191723525953 |
| CLX L96 10000LM RDL MVOLT 50K 80CRI WH | 00191723525847 |

|                |
|----------------|
| Catalog Number |
| Notes          |
| Type           |

LED Linear

# CLX

24", 36", 48" and 96" Lengths



Flat Diffuse Lens



Round Diffuse Lens



Wide Diffuse Lens



ENABLED WITH ATRIOUS™

# CLX LED Linear

## ORDERING INFORMATION

Lead times will vary depending on options selected. Consult with your sales representative.

**Example:** CLX L48 5000LM SEF WDL MVOLT GZ10 40K 80CRI WH

| Series                               | Length                   | Nominal lumens <sup>1</sup>          | Performance package                  | Louver   | Lens                               |  |
|--------------------------------------|--------------------------|--------------------------------------|--------------------------------------|--|------------------------------------|--|
| CLX LED linear                       | L24 24" <sup>1,2,3</sup> | 1500LM 1,500 lumens                  | SEF Standard efficiency <sup>4</sup> | (Blank) Less louver                                    | L/Lens Less lens <sup>6</sup>      |  |
|                                      |                          | 2000LM 2,000 lumens                  | HEF Premium efficiency               | SBLW Straight blade louver, white <sup>5</sup>         | FDL Flat diffuse <sup>7,8,9</sup>  |  |
|                                      |                          | 2500LM 2,500 lumens                  |                                      | SBLMB Straight blade louver, matte black <sup>5</sup>  | RDL Round diffuse <sup>7,8,9</sup> |  |
|                                      |                          | 3500LM 3,500 lumens                  |                                      | SBLGV Straight blade louver, galvanized <sup>5</sup>   | WDL Wide diffuse <sup>7,8</sup>    |  |
|                                      |                          | 4500LM 4,500 lumens                  |                                      | SBLSKGY Straight blade louver, smoke gray <sup>5</sup> |                                    |  |
|                                      | L36 36" <sup>1,3</sup>   | 2250LM 2,250 lumens                  |                                      |  |                                    |  |
|                                      |                          | 3000LM 3,000 lumens                  |                                      |  |                                    |  |
|                                      |                          | 3750LM 3,750 lumens                  |                                      |  |                                    |  |
|                                      |                          | 5250LM 5,250 lumens                  |                                      |  |                                    |  |
|                                      |                          | 6750LM 6,750 lumens                  |                                      |  |                                    |  |
|                                      | L48 48"                  | 7500LM 7,500 lumens                  |                                      |  |                                    |  |
|                                      |                          | 3000LM 3,000 lumens                  |                                      |  |                                    |  |
|                                      |                          | 4000LM 4,000 lumens                  |                                      |  |                                    |  |
|                                      |                          | 5000LM 5,000 lumens                  |                                      |  |                                    |  |
|                                      |                          | 7000LM 7,000 lumens <sup>3</sup>     |                                      |  |                                    |  |
|                                      | L96 96"                  | 9000LM 9,000 lumens <sup>3</sup>     |                                      |  |                                    |  |
| 10000LM 10,000 lumens <sup>1,3</sup> |                          |                                      |                                      |  |                                    |  |
| 6000LM 6,000 lumens                  |                          |                                      |                                      |  |                                    |  |
| 8000LM 8,000 lumens                  |                          |                                      |                                      |  |                                    |  |
| 10000LM 10,000 lumens                |                          |                                      |                                      |  |                                    |  |
|                                      |                          | 14000LM 14,000 lumens <sup>3</sup>   |                                      |  |                                    |  |
|                                      |                          | 18000LM 18,000 lumens <sup>3</sup>   |                                      |  |                                    |  |
|                                      |                          | 20000LM 20,000 lumens <sup>1,3</sup> |                                      |  |                                    |  |

| Distribution           | Voltage        | Driver                                | Color temperature | Coloring rendering index |
|------------------------|----------------|---------------------------------------|-------------------|--------------------------|
| (Blank) General        | MVOLT 120-277V | GZ10 0-10V dimming <sup>12</sup>      | 30K 3000 K        | 80CRI 80 CRI             |
| ND Narrow <sup>8</sup> | 120 120V       | EZ1 Dimming to 1% <sup>13</sup>       | 35K 3500 K        | 90CRI 90 CRI             |
| WD Wide <sup>8</sup>   | 208 208V       | EOHN EldoLED dimming <sup>12,14</sup> | 40K 4000 K        |                          |
| AD Aisle <sup>8</sup>  | 240 240V       |                                       | 50K 5000 K        |                          |

| Options  | Finish                                    |
|--|---|
| PS1050 Emergency battery pack, not available with BGTD <sup>15</sup>   | WH White                                  |
| BGTD Generator transfer device, not available with PS1050 <sup>15</sup>                                      | GALVW Galvanized with white lens end caps |
| OCS 5', 18/3 Reloc selectable One Pass cable <sup>16</sup>   | GALVB Galvanized with black lens end caps |
| HA High ambient, for use in ambient temperatures up to 50°C <sup>17</sup>                                    | MB Matte black                            |
| OUTCTR Wiring leads pulled through back center of fixture  | SKGYW Smoke gray with white lens end caps |
| OUTEND Wiring leads pulled through end of fixture  | SKGYB Smoke gray with black lens end caps |
| CS1W Straight blade plug, 120V <sup>16</sup>   |   |
| CS3W NEMA twist-lock plug, 120V <sup>16</sup>  |   |
| CS7W Straight blade plug, 277V <sup>16</sup>   |   |
| CS11W NEMA twist-lock plug, 277V <sup>16</sup>   |   |
| CS25W NEMA twist-lock plug, 347V <sup>16</sup>   |   |
| CS97W NEMA twist-lock plug, 480V <sup>16</sup>   |   |
| CS93W 600V SE00W white cord, no plug (no voltage required)   |   |
| CS6G16STOWD5D 6' white cord, 16/5, no plug, includes low voltage dimming wires                               |   |
| PLR___ Plug-in wiring, see page 9 for ordering information   |   |
| PLR1LVG Plug-in wiring, low voltage dimming  |   |
| RRL___ RELOC-ready luminaire. See page 8 for ordering information  |   |
| SPD Surge protection device, provides up to 6Kv protection <sup>16</sup>                                     |   |
| <u>Enabled with Atrius™:</u>   |   |
| AE1CD Atrius™ enabled, platform 1, VLC and bluetooth positioning, digital driver <sup>18</sup>               |   |
| AE1BA Atrius™ enabled, platform 1, Bluetooth positioning, analog driver <sup>18</sup>                        |   |
| <u>Individual controls:</u>  |   |
| MSD7 PIR integral occupancy sensor   |   |
| MSDPDT7 PDT 7 dual technology integral occupancy control   |   |
| MSD7ADC PIR integral occupancy sensor with automatic dimming control photocell                               |   |
| MSDPDT7ADC PDT integral occupancy sensor with automatic dimming control photocell                            |   |
| <u>nLight® Wired Networking:</u>   |   |
| N100 nLight® without lumen management  |   |
| NES7 nLight® nES 7 PIR integral occupancy sensor   |   |
| NESPDT7 nLight® nES PDT 7 dual technology integral occupancy control   |   |
| NES7ADCX nLight® nES 7 ADCX PIR integral occupancy sensor with automatic dimming photocell                   |   |
| NESPDT7ADCX nLight® nES PDT 7 dual technology integral occupancy sensor with automatic dimming photocell     |   |
| <u>nLight® Wireless Networking:</u>  |   |
| RES7N nLight® AIR PIR integral occupancy sensor with automatic dimming photocell for networking capabilities |   |
| <u>nLight® Wireless Zone:</u>  |   |
| RES7Z nLight® Air PIR integral occupancy sensor with automatic dimming photocell for zone control            |   |
| <u>Xpoint™ Wireless:</u>   |   |
| XAD XPoint™ Wireless 0-10V relay, internal, lower max ambient <sup>18</sup>                                  |   |
| XAD924 XPoint™ Wireless 0-10V relay, internal, lower max ambient with emergency relay (UL924 compliant)      |   |

See Accessories and footnotes on next page



| Accessories: Order as separate catalog number. |  |                |  |          |  |
|--|--|----------------|--|----------|--|
| ZACVH  | Aircraft cable 120" (one pair)   | THCLX ____     | Tong hanger (Must specify color) (one pair)              | CLXRW96  | Wide decorative 96" reflector                                |
| ZAC120   | One adjustable aircraft cable with canopy 120"                         | CLXANGBKT ____ | Angle bracket, (one pair)                                | CLXRWU24 | Wide decorative 24" reflector with uplight                   |
| ZACFP120                                       | One adjustable aircraft cable with feed (3 conductor) and canopy, 120" | HC36           | Hanger chain, 36" (one pair)                             | CLXRWU36 | Wide decorative 36" reflector with uplight                   |
| ZACFPD120                                      | One adjustable aircraft cable with feed (5 conductor) and canopy 120"  | LSXR           | Sensor Switch ® LSXR occupancy sensor                    | CLXRWU48 | Wide decorative 48" reflector with uplight                   |
| ZAC240   | One adjustable aircraft cable with canopy 240"                         | NPP16D         | nLight® switching/dimming module                         | CLXRWU96 | Wide decorative 96" reflector with uplight                   |
| ZACFP240                                       | One adjustable aircraft cable with feed (3 conductor) and canopy, 240" | NPP16DER       | nLight® switching/dimming module with emergency relay    | CLXRN24  | Narrow 24" reflector <sup>19</sup>                           |
| ZACFPD240                                      | One adjustable aircraft cable with feed (5 conductor) and canopy 240"  | XPA CMRBO      | XPoint™ Wireless 0-10V relay, external, 55°C max ambient | CLXRN36  | Narrow 36" reflector <sup>19</sup>                           |
| SQ_  | Stem kit, 2" increments up to 48"                                      | CLXRW24        | Wide decorative 24" reflector                            | CLXRN48  | Narrow 48" reflector <sup>19</sup>                           |
|  |  | CLXRW36        | Wide decorative 36" reflector                            | CLXRN96  | Narrow 96" reflector <sup>19</sup>                           |
|  |  | CLXRW48        | Wide decorative 48" reflector                            | WGCLX24  | 24" wireguard, white <sup>20</sup>                           |
|  |  |                |  | WGCLX36  | 36" wireguard, white <sup>20</sup>                           |
|  |  |                |  | WGCLX48  | 48" wireguard, white, 96" fixture requires two <sup>20</sup> |

## Notes

- Not available with EOHN, AE1CD, or AE1BA options.
- Not available with OUTCTR option.
- Not available with HA option.
- Not available with E21 when ordered with L24 with 5000LM or L36 with 7500LM.
- Only available with L24 when ordered with 1500LM or 2000LM and with G210 driver. Not for use with THCLX, CLXANGBKT or WGCLX accessories. Not available L/LENS or with RDL lens options.
- Not available with EOHN or AE1CD.
- Only available with general distribution.
- Not available with CLXRN accessories.
- Not available with EOHN or AE1CD.
- Voltage selected utilizes a step-down transformer. Not available with L24 when ordered with N100.

- When continuous row mounting, fixtures must all have the same driver selection.
- Not available with N100, Enabled with Atrius, Individual controls, nLight wired networking, nLight wireless networking, nLight wireless zone control options.
- Not available with AE1CD or HA options.
- Not available with AE1BA or HA options.
- Requires SPD option. Not available with HA option.
- Must specify voltage.
- Not available with PS1050, BGTD, XAD or XAD924 options.
- Requires SPD option.
- For use with L/LENS only.
- Not for use with CLX reflector accessories.

## Enabled with Atrius™ Notes

- Not available with L48 10000LM, L96 20000LM, L24 or L36. Not available with Individual controls, nLight wired networking, nLight wireless networking, nLight wireless zone control options. Not available with SBL lovers or WGCLX\_ wire guard accessories.
- Available with EOHN driver only.
- Available with E21 driver only.

## POWER SENTRY EMERGENCY BATTERY PACKS

|           |   |                     |
|-----------|---|---------------------|
| PS1050    | <a href="https://www.acuitybrands.com/products/detail/369448/Power-Sentry/PS1050/Reduced-Profile-LED-Emergency-Battery-Pack">https://www.acuitybrands.com/products/detail/369448/Power-Sentry/PS1050/Reduced-Profile-LED-Emergency-Battery-Pack</a>   | Factory installable |
| PS1055LCP | <a href="https://www.acuitybrands.com/products/detail/755258/Power-Sentry/PS1055LCP-Battery-Pack/Constant-Power-Field-Installable-LED-Emergency-Driver">https://www.acuitybrands.com/products/detail/755258/Power-Sentry/PS1055LCP-Battery-Pack/Constant-Power-Field-Installable-LED-Emergency-Driver</a> | Field installable   |
| PS1555LCP | <a href="https://www.acuitybrands.com/products/detail/755258/Power-Sentry/PS1055LCP-Battery-Pack/Constant-Power-Field-Installable-LED-Emergency-Driver">https://www.acuitybrands.com/products/detail/755258/Power-Sentry/PS1055LCP-Battery-Pack/Constant-Power-Field-Installable-LED-Emergency-Driver</a> | Field installable   |

## EMERGENCY LUMENS

| Efficiency Package | SEF  | HEF  |
|--------------------|------|------|
| PS1050             | 1400 | 1500 |
| PS1055LCP          | 1400 | 1500 |
| PS1555LCP          | 2000 | 2100 |

**Note:** For emergency lumen output of specific model, please consult factory.

## CLX OPERATIONAL DATA

|     | Length  | Nominal lumen package | Performance package | CRI   | Delivered Lumens  |       |       |        | Wattage |
|-----|---------|-----------------------|---------------------|-------|-------------------|-------|-------|--------|---------|
|     |         |                       |                     |       | Color Temperature |       |       |        |         |
|     |         |                       |                     |       | 3000K             | 3500K | 4000K | 5000K  |         |
| FDL | L24     | 2500LM                | SEF                 | 80    | 2307              | 2372  | 2437  | 2495   | 18.41   |
|     |         | 5000LM                | SEF                 | 80    | 4722              | 4855  | 4989  | 5107   | 41.48   |
|     | L36     | 3750LM                | SEF                 | 80    | 3536              | 3636  | 3736  | 3825   | 26.47   |
|     |         | 7500LM                | SEF                 | 80    | 6652              | 6840  | 7027  | 7194   | 62.6    |
|     | L48     | 5000LM                | SEF                 | 80    | 4451              | 4576  | 4702  | 4813   | 34.8    |
|     |         | 10000LM               | SEF                 | 80    | 9082              | 9338  | 9594  | 9822   | 73.37   |
| L96 | 10000LM | SEF                   | 80                  | 8649  | 8893              | 9137  | 9354  | 66.47  |         |
|     | 20000LM | SEF                   | 80                  | 17976 | 18484             | 18991 | 19442 | 146.83 |         |
| RDL | L24     | 2500LM                | SEF                 | 80    | 2374              | 2441  | 2508  | 2568   | 18.41   |
|     |         | 5000LM                | SEF                 | 80    | 4860              | 4997  | 5135  | 5256   | 41.48   |
|     | L36     | 3750LM                | SEF                 | 80    | 3640              | 3742  | 3845  | 3936   | 26.47   |
|     |         | 7500LM                | SEF                 | 80    | 6846              | 7040  | 7233  | 7404   | 62.6    |
|     | L48     | 5000LM                | SEF                 | 80    | 4581              | 4710  | 4839  | 4954   | 34.8    |
|     |         | 10000LM               | SEF                 | 80    | 9347              | 9611  | 9875  | 10109  | 73.37   |
| L96 | 10000LM | SEF                   | 80                  | 8902  | 9153              | 9404  | 9628  | 66.47  |         |
|     | 20000LM | SEF                   | 80                  | 18502 | 19024             | 19546 | 20010 | 146.83 |         |
| WDL | L24     | 2500LM                | SEF                 | 80    | 2405              | 2473  | 2541  | 2601   | 18.41   |
|     |         | 5000LM                | SEF                 | 80    | 4924              | 5063  | 5201  | 5325   | 41.48   |
|     | L36     | 3750LM                | SEF                 | 80    | 3687              | 3791  | 3895  | 3988   | 26.47   |
|     |         | 7500LM                | SEF                 | 80    | 6936              | 7131  | 7327  | 7501   | 62.6    |
|     | L48     | 5000LM                | SEF                 | 80    | 4640              | 4771  | 4902  | 5019   | 34.8    |
|     |         | 10000LM               | SEF                 | 80    | 9469              | 9736  | 10003 | 10241  | 73.37   |
| L96 | 10000LM | SEF                   | 80                  | 9018  | 9272              | 9527  | 9753  | 66.47  |         |
|     | 20000LM | SEF                   | 80                  | 18743 | 19272             | 19801 | 20271 | 146.83 |         |

## LUMENS VS. AMBIENT TEMPERATURE

| Ambient °C | Ambient °F | Lumen Multiplier |
|------------|------------|------------------|
| 0          | 32         | 1.013            |
| 5          | 41         | 1.012            |
| 10         | 50         | 1.011            |
| 20         | 68         | 1.005            |
| 25         | 77         | 1                |
| 30         | 86         | 0.995            |
| 35         | 95         | 0.989            |
| 40         | 104        | 0.983            |
| 45         | 113        | 0.979            |
| 50         | 122        | 0.971            |
| 55         | 131        | 0.965            |

## CLX CHARACTERISTICS

| Lumen package | Wattage             |       |       |       |                 |       |       |       | Length | Width | Depth | Comparable Light Source |
|---------------|---------------------|-------|-------|-------|-----------------|-------|-------|-------|--------|-------|-------|-------------------------|
|               | Standard efficiency |       |       |       | High efficiency |       |       |       |        |       |       |                         |
|               | 120V                | 277V  | 347V  | 480V  | 120V            | 277V  | 347V  | 480V  |        |       |       |                         |
|               | 19.9                | 19.9  | 25.9  | 25.9  | 18.5            | 18.5  | 24.5  | 24.5  |        |       |       |                         |
|               | 41.9                | 41.9  | 47.9  | 47.9  | 37.9            | 37.9  | 43.9  | 43.9  |        |       |       |                         |
|               | 28.1                | 28.1  | 34.1  | 34.1  | 27.0            | 27.0  | 33.0  | 33.0  |        |       |       |                         |
|               | 62.9                | 62.9  | 68.9  | 68.9  | 56.8            | 56.8  | 62.8  | 62.8  |        |       |       |                         |
|               | 35.4                | 35.4  | 41.4  | 41.4  | 32.9            | 32.9  | 38.9  | 38.9  |        |       |       |                         |
|               | 77.1                | 77.1  | 83.1  | 83.1  | 70.4            | 70.4  | 76.4  | 76.4  |        |       |       |                         |
|               | 70.8                | 70.8  | 76.8  | 76.8  | 65.8            | 65.8  | 71.8  | 71.8  |        |       |       |                         |
|               | 154.2               | 154.2 | 160.2 | 160.2 | 140.8           | 140.8 | 146.8 | 146.8 |        |       |       |                         |

## PROJECTED LUMEN MAINTENANCE

| CLX                      |   |        |        |        |        |         |
|--------------------------|---|--------|--------|--------|--------|---------|
| Operating hours          | 0 | 15,000 | 30,000 | 45,000 | 60,000 | 100,000 |
| Lumen maintenance factor | 1 | 0.971  | 0.944  | 0.918  | 0.893  | 0.83    |

## AMBIENT TEMPERATURE RATINGS

|     | Driver Lumen package Type | Driver | THCLX | Direct Surface | HEF  | Direct Surface | Driver      | Direct Surface | THCLX | Suspended 18" | Xpoint/BGTD Direct Surface | PS1050 Suspended |
|-----|---------------------------|--------|-------|----------------|------|----------------|-------------|----------------|-------|---------------|----------------------------|------------------|
| L24 | 1500LM                    | GZ10   | 40C   | 40C            |      | N/A            | EZ1 or EOHN | 40C            | 40C   | 40C           | 35C                        | 25C              |
|     | 2000LM                    | GZ10   | 40C   | 40C            |      | N/A            | EZ1 or EOHN | 40C            | 40C   | 40C           |                            |                  |
|     | 2500LM                    | GZ10   | 40C   | 40C            |      | N/A            | EZ1 or EOHN | 40C            | 40C   | 40C           |                            |                  |
|     | 3000LM                    | GZ10   | 40C   | 40C            |      | N/A            | EZ1 or EOHN | 40C            | 40C   | 40C           |                            |                  |
|     | 4500LM                    | GZ10   | 40C   | 40C            |      | N/A            | EZ1 or EOHN | 35C            | 35C   | 40C           |                            |                  |
|     | 5000LM                    | GZ10   | 40C   | 40C            |      | N/A            | EZ1 or EOHN | 25C            | 30C   | 35C           |                            |                  |
| L36 | 2250LM                    | GZ10   | 40C   | 40C            |      | N/A            | EZ1 or EOHN | 40C            | 40C   | 40C           |                            |                  |
|     | 3000LM                    | GZ10   | 40C   | 40C            |      | N/A            | EZ1 or EOHN | 40C            | 40C   | 40C           |                            |                  |
|     | 3750LM                    | GZ10   | 40C   | 40C            |      | N/A            | EZ1 or EOHN | 40C            | 40C   | 40C           |                            |                  |
|     | 5250LM                    | GZ10   | 40C   | 40C            |      | N/A            | EZ1 or EOHN | 35C            | 35C   | 40C           |                            |                  |
|     | 6750LM                    | GZ10   | 40C   | 30C            |      | N/A            | EZ1 or EOHN | 35C            | 35C   | 40C           |                            |                  |
|     | 7500LM                    | GZ10   | 40C   | 30C            |      | N/A            | EZ1 or EOHN | 25C            | 30C   | 35C           |                            |                  |
| L48 | 3000LM                    | GZ10   | 40C   | 40C            | GZ10 | 50C            | EZ1 or EOHN | 40C            | 40C   | 40C           |                            |                  |
|     | 4000LM                    | GZ10   | 40C   | 40C            | GZ10 | 50C            | EZ1 or EOHN | 40C            | 40C   | 40C           |                            |                  |
|     | 5000LM                    | GZ10   | 40C   | 40C            | GZ10 | 50C            | EZ1 or EOHN | 35C            | 35C   | 40C           |                            |                  |
|     | 7000LM                    | GZ10   | 40C   | 30C            |      | N/A            | EZ1 or EOHN | 35C            | 35C   | 40C           |                            |                  |
|     | 9000LM                    | GZ10   | 40C   | 30C            |      | N/A            | EZ1 or EOHN | 25C            | 30C   | 35C           |                            |                  |
|     | 10000LM                   | GZ10   | 40C   | 30C            |      | N/A            | EZ1 or EOHN | 25C            | 30C   | 35C           |                            |                  |
| L96 | 6000LM                    | GZ10   | 40C   | 40C            | GZ10 | 50C            | EZ1 or EOHN | 35C            | 35C   | 40C           |                            |                  |
|     | 8000LM                    | GZ10   | 40C   | 30C            | GZ10 | 50C            | EZ1 or EOHN | 35C            | 35C   | 40C           |                            |                  |
|     | 10000LM                   | GZ10   | 40C   | 30C            | GZ10 | 50C            | EZ1 or EOHN | 25C            | 30C   | 35C           |                            |                  |
|     | 14000LM                   | GZ10   | 40C   | 40C            |      | N/A            | EZ1 or EOHN | 35C            | 35C   | 40C           |                            |                  |
|     | 18000LM                   | GZ10   | 40C   | 30C            |      | N/A            | EZ1 or EOHN | 25C            | 30C   | 35C           |                            |                  |
|     | 20000LM                   | GZ10   | 40C   | 30C            |      | N/A            | EZ1 or EOHN | 25C            | 30C   | 35C           |                            |                  |

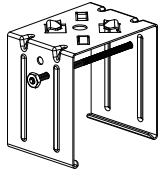
## DIMENSIONS

All dimensions are in inches (centimeters) unless otherwise indicated.  
Dimensions may vary with options or accessories.

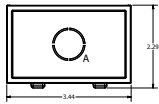
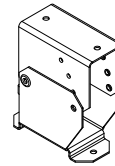
## PALLET DIMENSIONS

| Length | Approx Weight | Fixtures per pallet | Pallet Dims |
|--------|---------------|---------------------|-------------|
| L24    | 4 lb          | 100                 | 54x46x37    |
| L36    | 5 lb          | 80                  | 54x46x37    |
| L48    | 7.5 lb        | 64                  | 54x46x37    |
| L96    | 14 lb         | 64                  | 98x46x37    |

THCLX - SHIPS TWO PER ORDER,  
UTILIZES A #8 HEX HEAD SCREW AND NUT  
FIXTURE SITS 1.3 INCHES FROM STRUCTURE WHEN MOUNTED

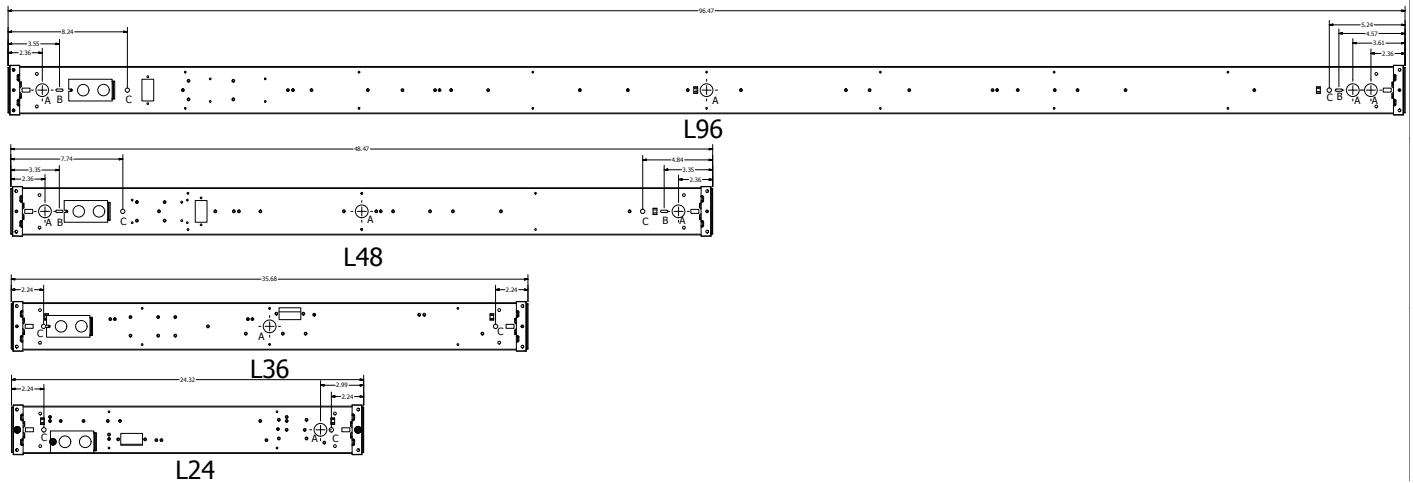


CLXANGBKT - SHIPS TWO PER ORDER  
HOLES TO MOUNTING STRUCTURE ARE 0.175" DIA, 2.5" APART  
FIXTURE SITS APPROXIMATELY 3.5" FROM STRUCTURE  
WHEN MOUNTED HORIZONTAL TO STRUCTURE



INTEGRATED SENSOR ADDS 4.75 INCHES TO STANDALONE FIXTURE LENGTH  
HOUSING END CAP ADDS 0.236 INCHES TO FIXTURE LENGTH PER SIDE

A - 7/8" KNOCK OUT  
B - 0.5" by 0.16" SLOT  
C - 0.3" DIA HOLE



## PHOTOMETRICS

See [www.lithonia.com](http://www.lithonia.com).

## RRL - RELOC®-Ready Luminaire

- RRL connectors can be used with Quick-Flex®, System 820 and OnePass® systems.
- Load side of connector factory installed to luminaire.
- 4-pole mating connector with push-in terminations allows for simple installation.
- Touch-safe design on both halves meets UL/CSA requirement.
- Wiping contact design allows safe disconnect under load.



### ORDERING INFORMATION

Lead times will vary depending on options selected. Consult with your sales representative.

**Example: RRLA**

| Series                     | Wiring instructions  |
|----------------------------|--|
| RRL RELOC®-ready luminaire | <p>A Hot conductor wired to position #1 (phase A)</p> <p>B Hot conductor wired to position #2 (phase B)</p> <p>C Hot conductor wired to position #3 (phase C) <sup>1</sup></p> |

### Compatible RELOC® Cables for Industrial Luminaires (ordered and shipped separately)



#### Notes

- 1 C, ABE, and C12S options are not used with Quick-Flex QFC, QSFC, QPT, and QD.
- 2 AE and ABE commercial fixtures should disconnect the TSPL before unplugging the RRL so it does not go into discharge mode.
- 3 C12S option is used with the OnePass OD and 820 SSC, PT, and DC for 0-10V/DALI applications.

**PRODUCT INFORMATION**

Advanced plug-in system with three-circuit capability. Available on industrial and strip products and a variety of architectural products mounted in continuous rows. 1, 2, 3 and 4-lamp fixtures. PLR22 (2-circuit) and PLR33 (3-circuit) crossover harness switches hot circuit serving next fixture in row. Reduces fixture types on job for alternating circuit applications (see example below.)

Easy one-step installation, saves up to 35% on labor costs. Expanded switching flexibility helps save energy.

Rows can be 50% longer with two-circuit systems. Polarized, lock-together nylon connectors prevent miswiring in the field. #12 THHN conductor, rated 600V, 90°C. White neutral wire included. Grounding accomplished by fixture in-row connectors.

CSA certified systems available with up to 2 circuits. G ground required.

Note: Specifications subject to change without notice.



**PLR**

Wiring

**Advanced 3-Circuit Plug-In**

**ORDERING INFORMATION**

Lead times will vary depending on options selected. Consult with your sales representative.

| Series | Number of hot wires               | Branch circuits                               | Dimming                | Ground                       |
|--------|-----------------------------------|---|------------------------|------------------------------|
| PLR    | (blank) Not required for 22 or 33 | <u>Circuits to which ballast is connected</u> | LV Low-voltage dimming | (blank) No ground in PLR     |
| PLR22  | 1 Black                           | (blank) Not required for 22 or 33             |                        | G Ground. Maximum 2 circuits |
| PLR33  | 2 Black and red                   | A Black wire                                  |                        |                              |
|        | 3 Black, red and blue             | B Red wire                                    |                        |                              |
|        |                                   | C Blue wire                                   |                        |                              |
|        |                                   | Emergency circuit connected                   |                        |                              |
|        |                                   | (blank) No emergency circuit                  |                        |                              |
|        |                                   | ELA Emergency circuit wired to black wire     |                        |                              |
|        |                                   | ELB Emergency circuit wired to red wire       |                        |                              |
|        |                                   | ELC Emergency circuit wired to blue wire      |                        |                              |

**Typical Applications**

- Multiple-circuit and single-circuit for longer continuous rows
- Multiple-circuit with alternating fixtures on separate circuits, 2-circuit (PLR 22) and 3-circuit (PLR 33)
- Multiple circuit with night-lights located along row as desired

| TYPICAL APPLICATIONS |           |           |           |           |           |           |           |           |           |           |
|----------------------|-----------|-----------|-----------|-----------|-----------|-----------|-----------|-----------|-----------|-----------|
| PLR 3 C              | PLR 3 C   | PLR 3 C   | PLR 3 C   | PLR 2 B   | PLR 2 B   | PLR 2 B   | PLR 2 B   | PLR 1     | PLR 1     | PLR 1     |
| (All PLR22)          |           |           |           |           |           |           |           |           |           |           |
| Circuit A            | Circuit B | Circuit A | Circuit B | Circuit A | Circuit B | Circuit A | Circuit B | Circuit A | Circuit B | Circuit A |
| (All PLR33)          |           |           |           |           |           |           |           |           |           |           |
| Circuit A            | Circuit B | Circuit C | Circuit A | Circuit B | Circuit C | Circuit A | Circuit B | Circuit C | Circuit A | Circuit B |
| PLR 3 A              | PLR 3 A   | PLR 3 A   | PLR 3 C   | PLR 3 B   | PLR 3 B   | PLR 3 B   | PLR 3 C   | PLR 3 A   | PLR 3 A   | PLR 3 A   |

**PRODUCT INFORMATION**

A standard occupancy time delay is also present to ensure lights turn off (once minimum on timer has also elapsed) if no occupancy is detected.

This timer is factory set at 10 minutes to promote energy savings, but is adjustable between 30 seconds and 30 minutes. These adjustments may be done through the unit's push-button.

**FEATURES**

- Four interchangeable lenses - high mount 360°, low mount 360°, high mount aisleway, and small motion 360°.
- Integrated mounting bracket drops lens down 3" from chase nipple - no bracket accessory required.
- 100% digital PIR detection - provides excellent RF immunity

Note: Specifications subject to change without notice.



**LSXR**

**Passive Infrared Indoor Occupancy Sensor**

**Single Relay**



**ORDERING INFORMATION**

Lead times will vary depending on options selected. Consult with your sales representative.

**Example: LSXR 10 ADC HVOLT 30M**

| Series  | Lens option  | Dimming/photocell   |
|---|--|---|
| LSXR Passive Infrared Indoor Occupancy Sensor | (blank) No lens 610 High and low mount 360°<br>6 High mount, 360° 650 High mount 360° and aisleway<br>10 Low mount, 360° 3PK High and low mount 360° and aisleway<br>50 High mount aisleway 4PK All lenses<br>9 Small motion, 360° | (blank) None<br>HL High/low occupancy operation<br>P Switching photocell (on/off)<br>ADC Dimming and switching photocell<br>ANL Dimming and switching photocell with high/low occupancy operation |

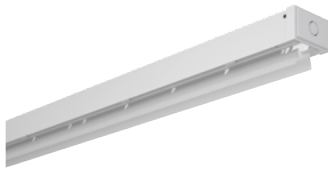
| Voltage                     | Max dim level  | Min dim level                            | Lead length | Temp humidity      | Default time delay                                   |
|-----------------------------|----------------|--|-------------|--------------------|--|
| (blank) 120-277 VAC (MVOLT) | (blank) 10 VDC | (blank) Minimum dimming level of ballast | (blank) 14" | (blank) None       | (blank) 10 minutes (with minimum 15 minutes on time) |
| HVOLT 347-480 VAC           | 9H 9 VDC       | 1V 1 VDC                                 | 42L 42"     | LT Low temperature | 5M 5 minutes (LED only)                              |
|                             | 8H 8 VDC       | 2V 2 VDC                                 |             |                    | 15M 15 minutes                                       |
|                             | 7H 7 VDC       | 3V 3 VDC                                 |             |                    | 20M 20 minutes                                       |
|                             |                | 4V 4 VDC                                 |             |                    | 30M 30 minutes                                       |
|                             |                | 5V 5 VDC                                 |             |                    |  |
|                             |                | 6V 6 VDC                                 |             |                    |  |

For additional information see [www.lithonia.com](http://www.lithonia.com)





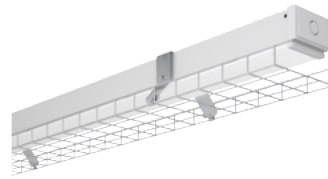
## OPTIONS AND ACCESSORIES



**Narrow reflector**  
Ships separate from fixture.  
Order as:  
CLXRN24  
CLXRN36  
CLXRN48  
CLXRN96



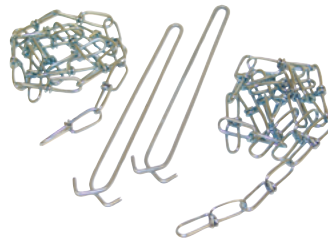
**Wide decorative reflector**  
Ships separately from fixture.  
Order as:  
CLXRW24  
CLXRW36  
CLXRW48  
CLXRW96



**Wireguard**  
Ships separately from fixture: 96" fixture  
requires two WGCLX48.  
Order as:  
WGCLX24  
WGCLX36  
WGCLX48



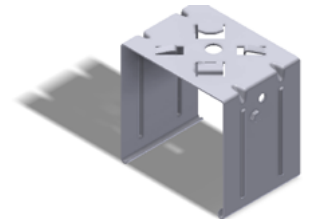
**Aircraft Cable with Canopy**  
Available in 120" or 240"  
Order as:  
ZAC120  
ZAC240



**HANGER CHAIN**  
36" chain with Y hanger. ships as a pair  
Order as:  
HC36



**ZACVH HANGER**  
10' Aircraft cable with Y hanger.  
Order as:  
ZACVH



**Tong hanger**  
Ships as a pair  
Order As:  
THCLX