

Installation Instructions
DM, DMW, DMW with WLF OPTION
AND VRI FIXTURES



**READ AND FOLLOW ALL SAFETY INSTRUCTIONS!
SAVE THESE INSTRUCTIONS AND DELIVER TO OWNER
AFTER INSTALLATION**

IMPORTANT SAFETY INSTRUCTIONS

▲ WARNING

To reduce the risk of death, injury or property damage from fire, electric shock, cuts, abrasions, falling parts, and other hazards:

- Service of the equipment must be performed by qualified service personnel.
- Installation and maintenance must be performed by a person familiar with the construction and operation of this product and any hazards involved. All applicable codes and ordinances must be followed.
- Read this document before installing, servicing, or maintaining this equipment or installing a lamp. These instructions do not cover all installation, service, and maintenance situations. If your situation is not covered, or if you do not understand these instructions or additional information is required, contact *Lithonia Lighting* or your local *Lithonia Lighting* Distributor.
- Read and follow all warnings and instructions provided by the lamp manufacturer.

▲ WARNING

Before installing, servicing, or maintaining this equipment, follow these general precautions.

To reduce the risk of electrocution:

- Make sure the equipment is properly grounded.
- Always de-energize the circuit and/or equipment before connecting to, disconnecting from, or servicing the equipment.


To reduce the risk of fire:

- Keep material away that can burn from hot lamp.
- Make sure lamps are correctly installed.
- Use supply conductors with a minimum installation temperature rating as specified on equipment.

To reduce the risk of personal injury from cuts, abrasions, or falling parts:

- Wear gloves to prevent cuts or abrasions from sharp edges when removing from carton, handling and maintaining this equipment.
- Do not use abrasive materials, glass cleaners or other solvents on reflector or lens. These substances may damage equipment and cause parts to eventually break and fall.
- Do not install a damaged fixture.

▲ CAUTION: Observe lamp manufacturer's recommendations and restrictions on lamp operation, including but not limited to ballast type, burning position, replacement and cycling. Use only lamps that comply with applicable ANSI standards.

NOTICE: If lamp is marked  it contains mercury. Follow disposal laws. See www.lamprecycle.org

Lithonia Lighting, a division of *Acuity Brands Lighting, Inc.*, assumes no responsibility for claims arising out of improper or careless installation or handling of this product.

SAVE THESE INSTRUCTIONS



An **Acuity Brands** Company

Lithonia Lighting
INDUSTRIAL VALUE STREAM
One Lithonia Way, Conyers, GA 30012
Phone: 800-315-4963 Fax: 770-981-8141
www.lithonia.com

PART NUMBER: U217809
REVISION DATE: 1/25/20087

Installation Instructions

DM, DMW, DMW with WLF OPTION AND VRI FIXTURES



Instructions stated below are for 4' fixtures unless otherwise stated.

DM / DMW INSTALLATION

1. Remove lens by releasing the 6 lens clips. Carefully set lens aside.

2. Remove channel cover

3. Remove the channel.

A. For the DMW and the 8' DM fixtures only, YOU NEED TO REMOVE THE WET LOCATION FITTING FROM EACH END OF THE FIXTURE BEFORE YOU CAN PROCEED TO STEP 3. REMOVE THE WLF BY USING THE PROPER TOOL (either channel lock pliers or vise grips). TURN WLF COUNTER CLOCKWISE UNTIL FITTING CAN EASILY BE REMOVED.

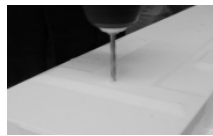


B. Remove channel by removing the 2 brass hexnuts from the brass studs.



SURFACE MOUNTING FIXTURE

1. To surface mount the housing, you will need to drill holes in the fiberglass housing on the raised (embossed) area.



2. Use appropriate silicone, sealant or gasket (s) to maintain WL listing. Not properly sealing the fixture could jeopardize the integrity of the WL listing and possibly void the warranty.

BCD MOUNTING (ordered as a separate item)

1. Using an 11/64" drill bit, drill hole located near the end of the fixture on the embossed area. (see pictures in step 1 of surface mounting)

2. Insert the screw provided in the hardware bag into the bracket. (see photo) Attach the gasketed washer on the opposite side of bracket from the screw head. Attach to the fixture.



An Acuity Brands Company

Lithonia Lighting
INDUSTRIAL VALUE STREAM
One Lithonia Way, Bldg 3
Conyers, GA 30012
Phone: 800-315-4963 Fax: 770-981-8141
www.lithonia.com

PART NUMBER: U217809
REVISION DATE: 1/25/2008

Installation Instructions DM, DMW, DMW with WLF OPTION AND VRI FIXTURES



BCD MOUNTING (ordered as a separate item) CONT.

- Secure on the inside of the housing with another gasketed washer and nut (also provided in the hardware bag).
Note: Be careful not to over tighten screw, as over tightening could strip out the screw.



- Repeat on the other end.

ATTACHING THE CHAIN (HC36 ordered as a separate item)

- Loop chain onto the "V" hook
- Insert bent end of "V" hook into the holes on the bracket



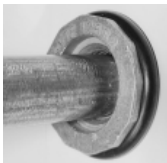
WIRING OF FIXTURE

(Recommended is using the surface conduit entry at the ends of the fixture.)

- Remove the center of the wet location fitting. (DMW ONLY)



- Attach conduit to supplied conduit entry. Pull supply wires to fixture.



- Wire fixture
- Make sure all wires are secure and replace channel cover.
- Reattach lens and secure with provided latches.

VRI FIXTURES ADDITIONAL NOTE:

For VRI fixtures, when securing the lens, please follow the follow additional steps

- After re-attaching the latches, insert screw provided to make the fixture tamper proof.