

## FEATURES & SPECIFICATIONS

**INTENDED USE** — Our recessed LED module is the most economical means to create a well lit environment with exceptional energy efficiency and near zero maintenance. Great for retrofit into existing downlight cans or new construction and remodel applications. Unique torsion spring and friction clip retention allows fitment into nearly 100% of installed cans. The LED module maintains at least 70% light output for 50,000 hours.

**CONSTRUCTION** — Aluminum die cast reflector with deep baffle configuration for reduced glare. Combined LED and driver printed circuit board attached. Inner reflector cone funnels light through the pressed-in diffused lens.

Baffle and open trim inserts are available in multiple finishes.

**OPTICS** — Diffused lens at end of mixing chamber to provide even light distribution for general illumination, equivalent to 65W BR30 or 100W BR30 lamp.

Wide flood beam angle at >45°.

**ELECTRICAL** — Center 2 Edge™ (patent pending) technology created for a single point source. Primary power disconnect provided for simple connection to a dedicated LED connector in the housing.

Dimming down to 10%. For compatible dimmers, refer to [Compatible Dimmers Chart](#).

620-lumen P series has an input wattage of 8.9 watts, 70 lumens per watt, equivalent to 65-watt incandescent.

P Series' patent pending driver has zero inrush, which allows power loads to be calculated with actual rated wattages.

Example: 67 units of 6BPMW LED fixtures can be installed in line with a 600-watt dimmer. 600W/8.6W = 67 fixtures.

950-lumen P series has an input wattage of 15.2 watts, 63 lumens per watt, equivalent to 100-watt incandescent.

\*Actual wattage may differ by +/-5% when operating at 120V +/-10%.

**INSTALLATION** — Suitable for installation in standard and shallow-height rough-in sections.

E26 socket adaptor and splice kit ships standard. This enables easy installation or permanent conversion to an LED source for Title 24 compliance.

Twin torsion springs ensure easy installation.

Friction clips included to allow fitment into cans without torsion brackets from an inside diameter of 6.0" to 7.0".

**LISTINGS** — CSA certified to US and Canadian safety standards. ENERGY STAR® qualified; California T24 compliant. LED matte white module is wet location listed for indoor use only. WSECE ASTM E283 for Air-Tight (with IC housings).

**WARRANTY** — 5-year limited warranty. Complete warranty terms located at

[www.acuitybrands.com/CustomerResources/Terms\\_and\\_conditions.aspx](http://www.acuitybrands.com/CustomerResources/Terms_and_conditions.aspx)

Actual performance may differ as a result of end-user environment and application.

Note: Specifications subject to change without notice.

**PATENTS PENDING.**

|                |
|----------------|
| Catalog Number |
| Notes          |
| Type           |

### LED Recessed Downlighting

# 6BP/60P

#### 6" LED Module

IC/Non-IC  
Retrofit



Torsion mount shown



Friction clip shown

(included)



E26 adaptor  
(included)

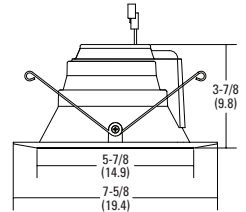


Splice kit  
(included)

*Specifications*

Aperture: 5-7/8 (14.9)  
 Ceiling opening: Determined by rough-in  
 Overlap trim: 7-5/8 (19.4)  
 Height: 3-7/8 (9.8)

All dimensions are inches (centimeters) unless otherwise indicated.



### ORDERING INFORMATION

Lead times will vary depending on options selected. Consult with your sales representative.

**Example: 6BP TRMW LED 27K 90CRI**

| Series/Finish   | Lamp   | CCT / CRI / W / Lumens <sup>2</sup>      | Voltage      | Options   |
|---|--------|--|--------------|---|
| 6BPMW 6" Baffle LED module, matte white <sup>1</sup>              | LED    | (blank) 3000 K / 83 CRI / 8.9W / 620L    | (blank) 120V | L7XLED T24 New construction rough-in LED base       |
| 6BP TRMW 6" Baffle LED module, black baffle, matte white flange   |        | 27K 90CRI 2700 K / 93 CRI / 11.2W / 600L |              | L7XRLED T24 Remodel rough-in LED base               |
| 6BPBN 6" Baffle LED module, brushed nickel                        |        | 30K 90CRI 3000 K / 93 CRI / 11.2W / 600L |              | LC6LED T24 New construction rough-in LED base       |
| 6BPORB 6" Baffle LED module, oil-rubbed bronze                    |        | 40K 90CRI 4000K / 92CRI / 9.9W / 650L    |              | L7X New construction rough-in <sup>3</sup>          |
|   | HL LED | (blank) 3000 K / 83 CRI / 15.2W / 950L   |              | L7XR Remodel rough-in <sup>3</sup>                  |
|   |        | 27K 90CRI 2700 K / 93 CRI / 16.5W / 860L |              | L7XP New construction shallow rough-in <sup>3</sup> |
|   |        | 30K 90CRI 3000 K / 93 CRI / 16.5W / 860L |              | L7XPR Remodel shallow rough-in <sup>3</sup>         |
|   |        | 40K 90CRI 4000K / 92CRI / 16.4W / 950L   |              | LC6 New construction rough-in <sup>3</sup>          |
|   |        |  |              | LCP New construction shallow rough-in <sup>3</sup>  |
| 60PA 6" Open LED module, clear diffuse                            | LED    | (blank) 3000 K / 83 CRI / 8.9W / 620L    | (blank) 120V | L7XLED T24 New construction rough-in LED base       |
| 60PAZ 6" Open LED module, clear specular                          |        | 27K 90CRI 2700 K / 93 CRI / 11.2W / 600L |              | L7XRLED T24 Remodel rough-in LED base               |
| 60PA TRMW 6" Open LED module, clear diffuse, matte white flange   |        | 30K 90CRI 3000 K / 93 CRI / 11.2W / 600L |              | LC6LED T24 New construction rough-in LED base       |
| 60PAZ TRMW 6" Open LED module, clear specular, matte white flange |        | 40K 90CRI 4000K / 92CRI / 9.9W / 650L    |              | L7X New construction rough-in <sup>3</sup>          |
|   | HL LED | (blank) 3000 K / 83 CRI / 15.2W / 950L   |              | L7XR Remodel rough-in <sup>3</sup>                  |
|   |        | 27K 90CRI 2700 K / 93 CRI / 16.5W / 860L |              | L7XP New construction shallow rough-in <sup>3</sup> |
|   |        | 30K 90CRI 3000 K / 93 CRI / 16.5W / 860L |              | L7XPR Remodel shallow rough-in <sup>3</sup>         |
|   |        | 40K 90CRI 4000K / 92CRI / 16.4W / 950L   |              | LC6 New construction rough-in <sup>3</sup>          |
|   |        |  |              | LCP New construction shallow rough-in <sup>3</sup>  |

**Accessories:** Order as separate catalog number.

|        |   |
|--------|---|
| TSA6   | Makes non-bracket housing compatible with the LED module; ships as units, J6 or J25 |
| FL2LED | Makes L7XF housings compatible with the LED module                                  |

#### Notes

- 1 Wet location listing is for base MW trim only.
- 2 Total system delivered lumens.
- 3 Must be ordered on a separate line.

**See page 2 for Trim Inserts.**

# 6" LED Module

## TRIM INSERTS

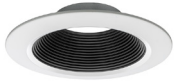
TRIM INSERTS (for field configuration; ordered separately) <sup>1</sup>

Example: 6BP TRMW R12

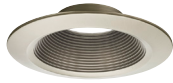
| Series/Finish |  |            |   | Packaging                   |
|---------------|--|------------|---|-----------------------------|
| 6BP TRMW      | 6" Baffle black, matte white flange insert | 60PAZ      | 6" Open clear specular insert                     | R12 Retail pack of 12 units |
| 6BPBN         | 6" Baffle brush nickel insert              | 60PA TRMW  | 6" Open clear diffuse, matte white flange insert  | U Unit                      |
| 6BPORB        | 6" Baffle oil-rubbed bronze insert         | 60PAZ TRMW | 6" Open clear specular, matte white flange insert |                             |
| 6OPA          | 6" Open clear diffuse insert               |            |   |                             |

**Notes**

<sup>1</sup> Use of trim inserts in wet location applications is not recommended.



Black Baffle with Matte White Trim Ring (TRMW)



Brushed Nickel Baffle (BN)



Oil-rubbed Bronze Baffle (ORB)



Clear Diffuse with Matte White Trim Ring (A TRMW)



Clear Diffuse (A)



Clear Specular with Matte White Trim Ring (AZ TRMW)



Clear Specular (AZ)

## ADDITIONAL DATA

| ENERGY DATA* - 600 Lumens |                                    |                                    |
|---------------------------|------------------------------------|------------------------------------|
|                           | CRI - 83                           | CRI - 93                           |
| Lumens                    | 620                                | 600                                |
| Min. starting temp        | -18°C (0°F)                        | -18°C (0°F)                        |
| Max. temp                 | 46°C (115°F)                       | 46°C (115°F)                       |
| EMI/RFI                   | FCC Title 47 CFR, Part 15, Class B | FCC Title 47 CFR, Part 15, Class B |
| Sound rating              | A standards                        | A standards                        |
| Input voltage             | 120V                               | 120V                               |
| Min. power factor         | 0.97                               | 0.97                               |
| Input frequency           | 50/60 Hz                           | 50/60 Hz                           |
| Rated wattage             | 8.9W                               | 10.5W                              |
| Input power               | 8.9W                               | 10.5W                              |
| Input current             | .11A                               | .09A                               |

\*Values at non-dimming line voltage.

| ENERGY DATA* - 900 Lumens |                                    |                                    |
|---------------------------|------------------------------------|------------------------------------|
|                           | CRI - 83                           | CRI - 93                           |
| Lumens                    | 950                                | 860                                |
| Min. starting temp        | -18°C (0°F)                        | -18°C (0°F)                        |
| Max. temp                 | 46°C (115°F)                       | 46°C (115°F)                       |
| EMI/RFI                   | FCC Title 47 CFR, Part 15, Class B | FCC Title 47 CFR, Part 15, Class B |
| Sound rating              | A standards                        | A standards                        |
| Input voltage             | 120V                               | 120V                               |
| Min. power factor         | 0.97                               | 0.97                               |
| Input frequency           | 50/60 Hz                           | 50/60 Hz                           |
| Rated wattage             | 15.2W                              | 16.7W                              |
| Input power               | 15.2W                              | 16.7W                              |
| Input current             | .13A                               | .14A                               |

\*Values at non-dimming line voltage.

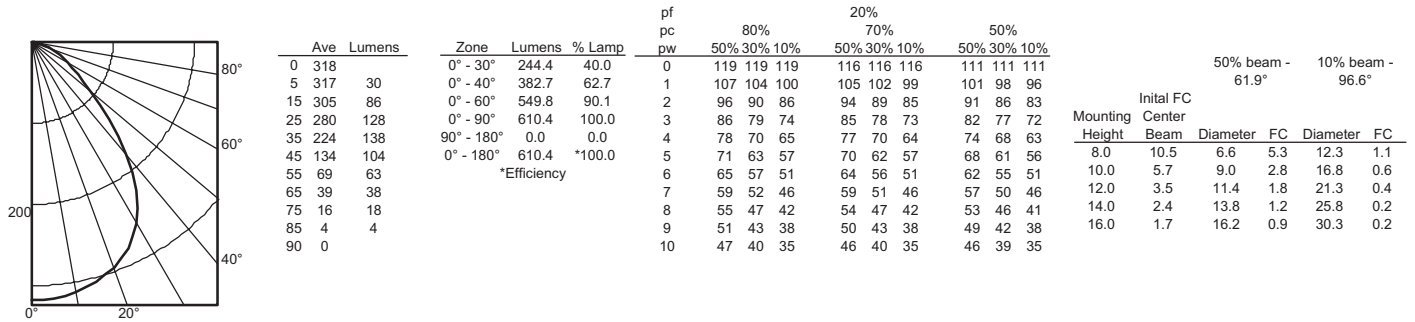
| Trim finish             | Lumen multiplier |
|-------------------------|------------------|
| Clear Diffuse (A)       | 0.98             |
| Matte White (MW)        | 1.00 (baseline)  |
| Clear Specular (AZ)     | 0.98             |
| Brushed Nickel (BN)     | 0.83             |
| Black Baffle (TRMW)     | 0.76             |
| Oil-Rubbed Bronze (ORB) | 0.78             |

# 6" LED Module

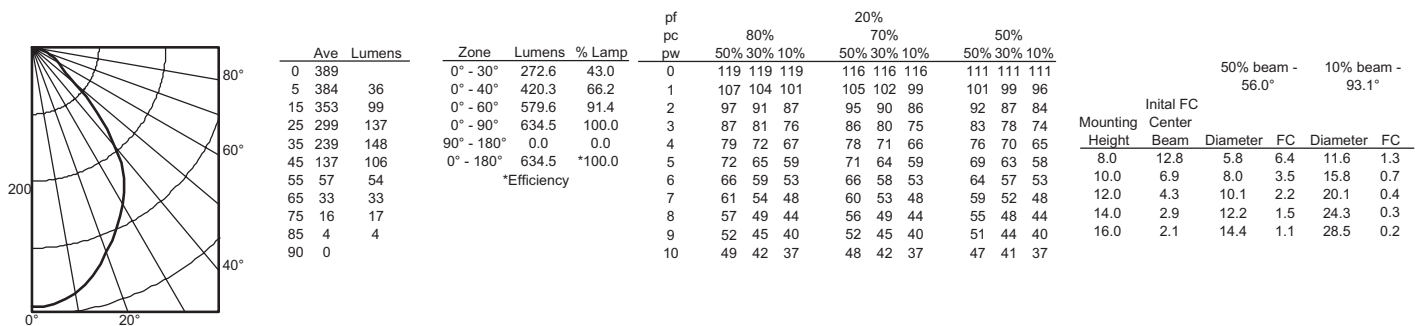
## PHOTOMETRICS

Distribution Curve      Distribution Data      Output Data      Coefficient of Utilization      Illuminance Data at 30" Above Floor for a Single Luminaire

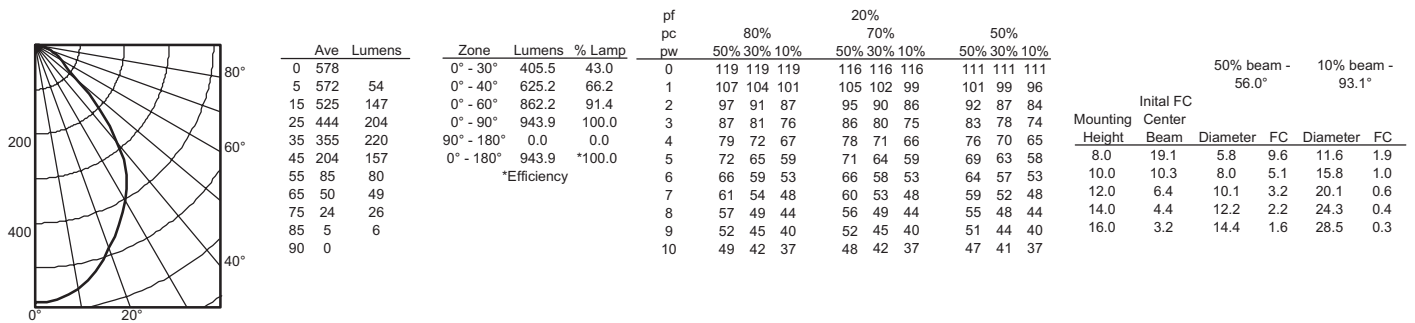
**6BPMW LED, 3000 K LEDs, input watts: 8.9, delivered lumens: 620, LM/W=70, test no. LTL21369, tested in accordance with IESNA LM 79-08**



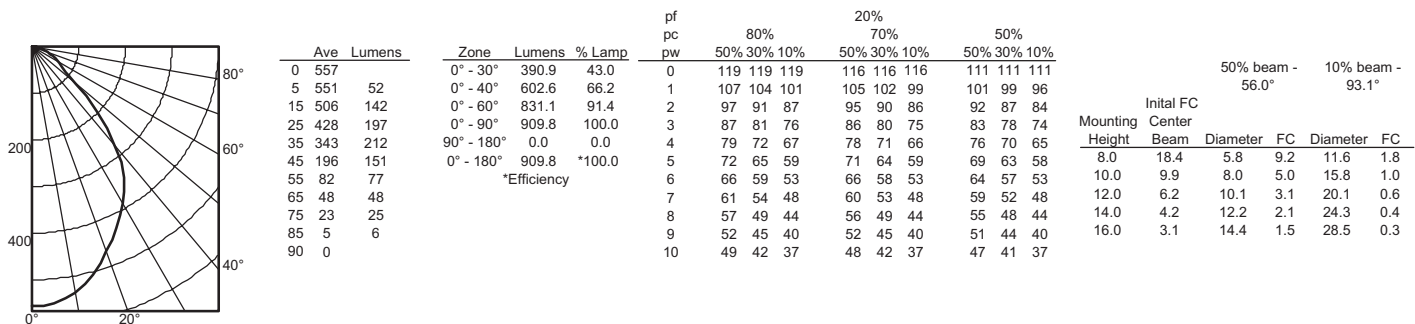
**6BPMW LED 90CRI, 3000 K LEDs, input watts: 10.3, delivered lumens: 634, LM/W=62, test no. LTL 23864P, tested in accordance with IESNA LM 79-08**



**6BPMW HL LED 80CRI, 3000 K LEDs, input watts: 15.2, delivered lumens: 950, LM/W=63, test no. LTL23864, tested in accordance with IESNA LM 79-08**



**6BPMW HL LED 90CRI, 3000 K LEDs, input watts: 16.6, delivered lumens: 910, LM/W=55, test no. LTL 23864P1, tested in accordance with IESNA LM 79-08**



# 6" LED Module

## LIGHTING FACTS

**LED lighting facts**  
A Program of the U.S. DOE

|                            |     |
|----------------------------|-----|
| Light Output (Lumens)      | 620 |
| Watts                      | 8.9 |
| Lumens per Watt (Efficacy) | 70  |

|   |    |
|---|----|
| Color Accuracy<br>Color Rendering Index (CRI) | 86 |
|---|----|

Light Color  
Correlated Color Temperature (CCT) **3000 (Bright White)**

Warranty\*\* Yes

All results, except LED Lumen Maintenance, are according to IESNA LM-79-2008: Approved Method for the Electrical and Photometric Testing of Solid-State Lighting. The U.S. Department of Energy (DOE) verifies product test data and results.

\*\* See [www.lightingfacts.com/products](http://www.lightingfacts.com/products) for details.

Registration Number: NJSM-IC4BRR (8/18/2012)  
Model Number: 6BP HL (Revised 8/2012)  
Type: Recessed downlight

**LED lighting facts**  
A Program of the U.S. DOE

|                            |      |
|----------------------------|------|
| Light Output (Lumens)      | 600  |
| Watts                      | 10.5 |
| Lumens per Watt (Efficacy) | 57   |

|   |    |
|---|----|
| Color Accuracy<br>Color Rendering Index (CRI) | 93 |
|---|----|

Light Color  
Correlated Color Temperature (CCT) **2700 (Warm White)**

All results are according to IESNA LM-79-2008: Approved Method for the Electrical and Photometric Testing of Solid-State Lighting. The U.S. Department of Energy (DOE) verifies product test data and results.

Visit [www.lightingfacts.com](http://www.lightingfacts.com) for the Label Reference Guide.

Registration Number: JB22-2230CD (2/27/2014)  
Model Number: 6BPMW LED 27K 90CRI  
Type: Retrofit Kit - Downlight

**LED lighting facts**  
A Program of the U.S. DOE

|                            |      |
|----------------------------|------|
| Light Output (Lumens)      | 600  |
| Watts                      | 10.5 |
| Lumens per Watt (Efficacy) | 57   |

|   |    |
|---|----|
| Color Accuracy<br>Color Rendering Index (CRI) | 93 |
|---|----|

Light Color  
Correlated Color Temperature (CCT) **3000 (Bright White)**

All results are according to IESNA LM-79-2008: Approved Method for the Electrical and Photometric Testing of Solid-State Lighting. The U.S. Department of Energy (DOE) verifies product test data and results.

Visit [www.lightingfacts.com](http://www.lightingfacts.com) for the Label Reference Guide.

Registration Number: JB22-2LWVYY (2/27/2014)  
Model Number: 6BPMW LED 30K 90CRI  
Type: Retrofit Kit - Downlight

**LED lighting facts**  
A Program of the U.S. DOE

|                            |     |
|----------------------------|-----|
| Light Output (Lumens)      | 650 |
| Watts                      | 9.9 |
| Lumens per Watt (Efficacy) | 65  |

|   |    |
|---|----|
| Color Accuracy<br>Color Rendering Index (CRI) | 92 |
|---|----|

Light Color  
Correlated Color Temperature (CCT) **4000 (Bright White)**

All results are according to IESNA LM-79-2008: Approved Method for the Electrical and Photometric Testing of Solid-State Lighting. The U.S. Department of Energy (DOE) verifies product test data and results.

Visit [www.lightingfacts.com](http://www.lightingfacts.com) for the Label Reference Guide.

Registration Number: NJSM-2QV3L7 (8/6/2014)  
Model Number: 6BPMW LED 40K 90CRI  
Type: Luminaire - Downlight

**LED lighting facts**  
A Program of the U.S. DOE

|                            |      |
|----------------------------|------|
| Light Output (Lumens)      | 950  |
| Watts                      | 15.2 |
| Lumens per Watt (Efficacy) | 63   |

|   |    |
|---|----|
| Color Accuracy<br>Color Rendering Index (CRI) | 84 |
|---|----|

Light Color  
Correlated Color Temperature (CCT) **3000 (Bright White)**

Warranty\*\* Yes

All results, except LED Lumen Maintenance, are according to IESNA LM-79-2008: Approved Method for the Electrical and Photometric Testing of Solid-State Lighting. The U.S. Department of Energy (DOE) verifies product test data and results.

\*\* See [www.lightingfacts.com/products](http://www.lightingfacts.com/products) for details.

Registration Number: JB22-Q42ENN (8/6/2013)  
Model Number: 6BP HL (Revised 07-25-13)  
Type: Recessed downlight

**LED lighting facts**  
A Program of the U.S. DOE

|                            |      |
|----------------------------|------|
| Light Output (Lumens)      | 860  |
| Watts                      | 16.7 |
| Lumens per Watt (Efficacy) | 51   |

|   |    |
|---|----|
| Color Accuracy<br>Color Rendering Index (CRI) | 93 |
|---|----|

Light Color  
Correlated Color Temperature (CCT) **2700 (Warm White)**

All results are according to IESNA LM-79-2008: Approved Method for the Electrical and Photometric Testing of Solid-State Lighting. The U.S. Department of Energy (DOE) verifies product test data and results.

Visit [www.lightingfacts.com](http://www.lightingfacts.com) for the Label Reference Guide.

Registration Number: JB22-QD7G2 (2/27/2014)  
Model Number: 6BPMW HL LED 27K 90CRI  
Type: Retrofit Kit - Downlight

**LED lighting facts**  
A Program of the U.S. DOE

|                            |      |
|----------------------------|------|
| Light Output (Lumens)      | 860  |
| Watts                      | 16.7 |
| Lumens per Watt (Efficacy) | 51   |

|   |    |
|---|----|
| Color Accuracy<br>Color Rendering Index (CRI) | 93 |
|---|----|

Light Color  
Correlated Color Temperature (CCT) **3000 (Bright White)**

All results are according to IESNA LM-79-2008: Approved Method for the Electrical and Photometric Testing of Solid-State Lighting. The U.S. Department of Energy (DOE) verifies product test data and results.

Visit [www.lightingfacts.com](http://www.lightingfacts.com) for the Label Reference Guide.

Registration Number: JB22-F1LFT2 (2/27/2014)  
Model Number: 6BPMW HL LED 30K 90CRI  
Type: Retrofit Kit - Downlight

**LED lighting facts**  
A Program of the U.S. DOE

|                            |      |
|----------------------------|------|
| Light Output (Lumens)      | 950  |
| Watts                      | 16.4 |
| Lumens per Watt (Efficacy) | 57   |

|   |    |
|---|----|
| Color Accuracy<br>Color Rendering Index (CRI) | 92 |
|---|----|

Light Color  
Correlated Color Temperature (CCT) **4000 (Bright White)**

All results are according to IESNA LM-79-2008: Approved Method for the Electrical and Photometric Testing of Solid-State Lighting. The U.S. Department of Energy (DOE) verifies product test data and results.

Visit [www.lightingfacts.com](http://www.lightingfacts.com) for the Label Reference Guide.

Registration Number: NJSM-MRE367 (8/6/2014)  
Model Number: 6BPMW HL LED 40K 90CRI  
Type: Luminaire - Downlight