

Job Name/Location:

Tag No:

Date:

PO No.:

| | | |
|------|----------|----------|
| For: | File | Resubmit |
| | Approval | Other |

Architect:

GC:

Engr:

Mech:

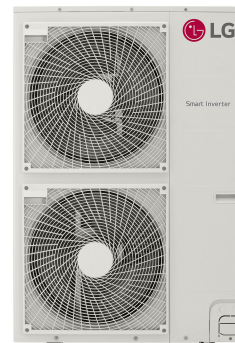
Rep:

(Company)

(Project Manager)

KUMXB541A**R32 Multi F Max Outdoor Unit**

Outdoor Unit (ODU) - KUMXB541A

**Performance:**

| | |
|---|----------------------|
| Cooling Capacity (Min.-Rated-Max., Btu/h) | 10,800~50,500~63,200 |
| Heating Capacity (Min.-Rated-Max., Btu/h) | 12,420~58,000~64,000 |
| Max. Heating Capacity at 17°F (Btu/h) | 48,000 |
| Max. Heating Capacity at 5°F (Btu/h) | 40,500 |
| Max. Heating Capacity at -4°F (Btu/h) | 35,200 |
| Cooling COP @95°F (Rated) | 3.69 |
| Heating COP @47°F (Rated) | 3.35 |

Cooling Nominal Test Conditions:

Indoor: 80°F DB / 67°F WB

Outdoor: 95°F DB / 75°F WB

Heating Nominal Test Conditions:

Indoor: 70°F DB / 60°F WB

Outdoor: 47°F DB / 43°F WB

Electrical:

| | |
|--------------------------------------|-----------------|
| Power Supply (V/Hz/Ø) ^{1,2} | 208-230V, 60, 1 |
| MOP (A) | 40 |
| MCA (A) | 33.3 |
| Cooling Rated Amps (A) | 24.3 |
| Heating Rated Amps (A) | 24.3 |
| Compressor (A) | 23 |
| Fan Motor (A) | 0.65 x 2 |
| Locked Rotor Amps (A) | 22 |

MOP - Maximum Overcurrent Protection

MCA - Minimum Circuit Ampacity

Piping:

| | |
|--|--------------|
| Refrigerant Charge (lbs.) | 7.5 |
| Liquid Line Connection (in., O.D.) | Ø3/8 x 1 |
| Vapor Line Connection (in., O.D.) | Ø3/4 x 1 |
| Maximum Total Piping ³ (ft.) | 475.7 |
| Min. / Max. ODU to IDU Piping ⁴ (ft.) | 32.8 / 229.6 |
| Piping Length ⁵ (no add'l refrigerant, ft.) | 180.4 |
| Additional Refrigerant Charge Main Pipe (oz. / ft.) | 0.54 |
| Additional Refrigerant Charge Branch Pipe (oz. / ft.) | 0.22 |
| Maximum Elevation between ODU and IDU (ft.) | 98.4 |
| Maximum Elevation between IDU and IDU (ft.) | 49.2 |

ODU = Outdoor Unit

IDU = Indoor Unit

Features:

- Scroll (variable speed) compressor
- Auto operation / Auto restart
- Integrated central control connection
- Self diagnosis
- Defrost / Deicing
- Restart delay (three [3] minutes)
- Soft start
- Low ambient cooling down to 14°F (-4°F with Wind Baffle Kit)

Required Accessories:⁶

- ☐ 2-Port BD Unit - PMBD3620ZR
- ☐ 3-Port BD Unit - PMBD3630ZR
- ☐ 4-Port BD Units - PMBD3640ZR / PMBD3641ZR

Optional Accessories:

- ☐ Power Distribution Indicator (PDI) Premium - PQNUD1S41
- ☐ Mobile LGMV for Android® Smartphones / Tablets or for iOS® Tablets - PLGMVW100
- ☐ LG Monitoring View (LGMV) for Computers - PRCTILO
- ☐ Drain Pan Heater - PQSH1200
- ☐ Low Ambient Wind Baffle Kit - ZLABGP04A x 2

(Android is a registered trademark of Google LLC. iOS is a registered trademark of Apple Inc.)

Controller Options:

- ☐ MultiSITE Communication Mgr.
- ☐ AC Smart 5
- ☐ ACP 5
- ☐ ACP 5 BACnet® Gateway
- ☐ LonWorks® Gateway

BACnet® is a registered trademark of ASHRAE. LonWorks is a registered trademark of Echelon Corp.

For a complete list of available accessories, contact your LG representative.

For continual product development, LG reserves the right to change specifications without notice.

© LG Electronics U.S.A., Inc., Englewood Cliffs, NJ. All rights reserved. "LG Life's Good" is a registered trademark of LG Corp. / www.lghvac.com

Operating Range:

| | |
|-----------------|-----------|
| Cooling (°F DB) | 14 to 118 |
| Heating (°F WB) | -4 to +64 |

Unit Data:

| | |
|---|----------------|
| Refrigerant Type | R32 |
| Refrigerant Control | EEV |
| Sound Pressure (Cool / Heat) ±1 dB(A) ⁷ | 53 / 55 |
| Net / Shipping Weight (lbs.) | 194 / 218.3 |
| Power Wiring: ODU→BDU, BDU→IDU (No. x AWG) ² | 3 x 14, 3 x 14 |
| Comm. Wiring: ODU→BDU, BDU→IDU (No. x AWG) ² | 2 x 18, 2 x 18 |
| Heat Exchanger Coating | Gold Fin™ |
| Minimum No. of Indoor Units | 2 |
| Maximum No. of Indoor Units | 8 |

Compressor:

| | |
|------------|--------|
| Type | Scroll |
| Quantity | 1 |
| Oil / Type | PVE |

Fan:

| | |
|-------------------------|---------------------------------------|
| Type | Propeller |
| Quantity | 2 |
| Motor / Drive | Brushless Digitally Controlled/Direct |
| Max. Airflow Rate (CFM) | 2,295 x 2 |

Notes:

1. Acceptable operating voltage: 187V - 253V.
2. All power supply wiring to the outdoor unit is field supplied, solid or stranded. The power wiring and the communication wiring from the outdoor unit to the branch distribution unit, and from the branch distribution unit to the indoor unit is field supplied and must be stranded, shielded or unshielded (if shielded, it must be grounded to the chassis of the outdoor unit only). All wiring must comply with applicable local and national codes.
 - a. Power Supply Wiring to Outdoor Unit (No. x AWG): 3 x 8 for 48k, 54k, and 60k.
 - b. Power Wiring and Communication Wiring from ODU to BDU (No. x AWG) 3 x 14 / 2 x 18.
 - c. Power Wiring and Communication Wiring from BDU to IDU (No. x AWG) 3 x 14 / 2 x 18.
3. Piping lengths are equivalent.
4. 180.4 ft. of Main Piping + 49.2 ft. of Branch Piping.
5. 49.2 ft. of Main Piping + 131.2 of Branch Piping.
6. At least one branch distribution (BD) unit is required for system operation; a maximum of two can be installed per outdoor unit with the use of a Y-branch accessory (ARBLN03321).
7. Sound pressure levels are tested in an anechoic chamber under ISO Standard 3745.
8. See the Engineering Manual Capacity Tables for ODU sensible and latent capacities.
9. See the Engineering Manual Combination Tables for allocation of ODU rated capacity to each connected IDU when all are calling for full capacity. Allocation percentages should be applied to ODU capacity at design conditions.
10. Capacity is rated 0 ft. above sea level, with a 0 ft. level difference between ODU and IDUs, and the following refrigerant pipe lengths: KUMXB481 / 541 / 601A: 16.4 ft. Main + (16.4 ft. Branch x 8) = 147.6 ft. All capacities are net with a combination ratio between 95 - 105%.
11. Must follow installation instructions in the applicable LG installation manual.
12. See the Engineering Manual Capacity Tables for ODU capacity at design conditions.



Proper sizing and installation of equipment is critical to achieve optimal performance. Split system air conditioners and heat pumps (excluding ductless systems) must be matched with appropriate coil components to meet ENERGY STAR® criteria. Ask your contractor for details or visit www.energystar.gov. (ENERGY STAR and the ENERGY STAR mark are registered trademarks owned by the U.S. Environmental Protection Agency.)

SB_Multi_F_MAX_ODU_R32_KUMXB541A_2025_01_08_082120

KUMXB541A

R32 Multi F Max Outdoor Unit

Outdoor Unit (ODU) - KUMXB541A



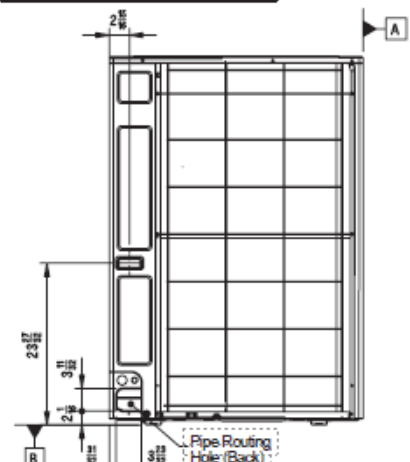
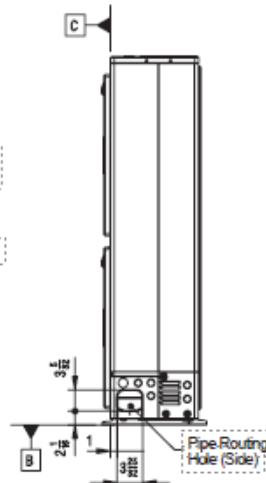
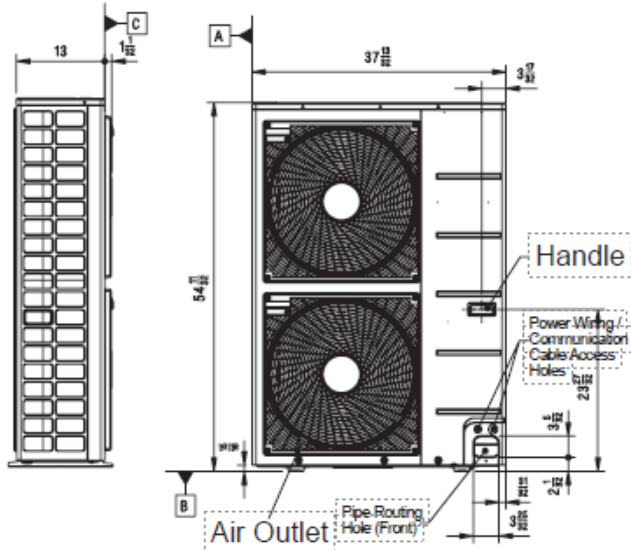
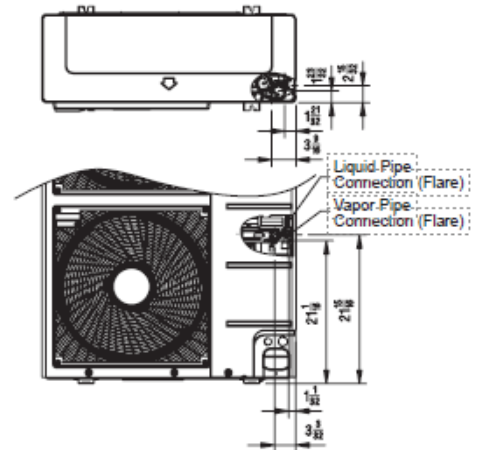
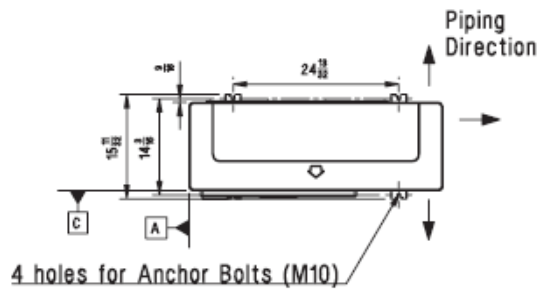
Tag No.: _____

Date: _____

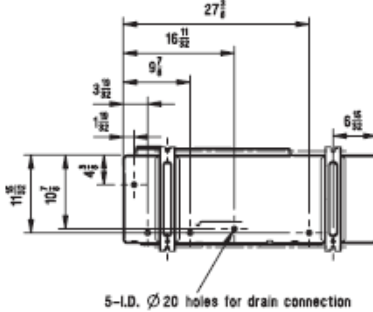
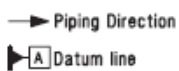
PO No.: _____

[Unit: inch]

Chassis code : U60A



Symbols



Notes:

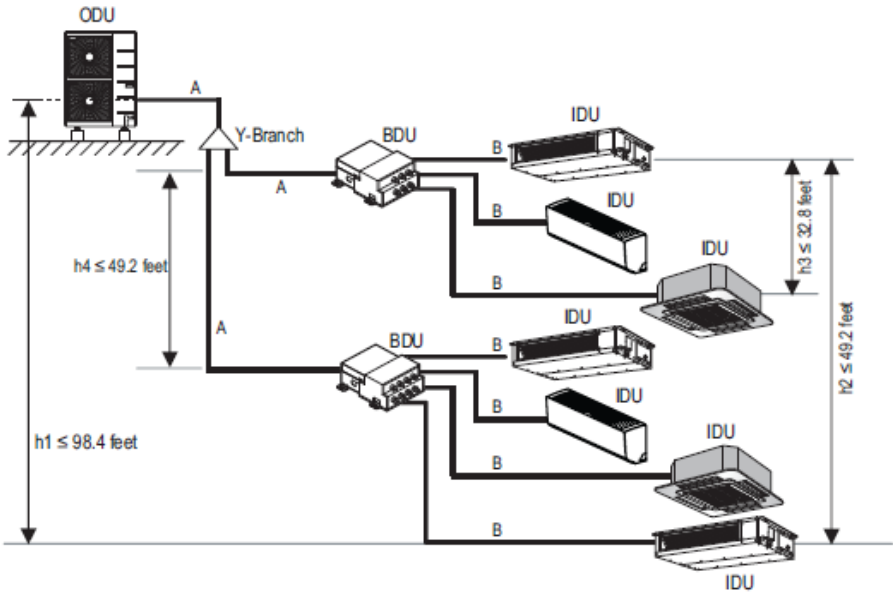
1. Unit must be installed in compliance with the installation manual.
2. Unit must be grounded in accordance with the local or state regulations and applicable national codes.
3. All field-supplied electrical components and materials must comply with local, state, and national codes.
4. Electrical characteristics must be considered for electrical work and design. The capacity of power cable and circuit breaker for the outdoor unit must follow local, state, national, and manufacturer requirements.

KUMXB541A
R32 Multi F Max Outdoor Unit
Outdoor Unit (ODU) - KUMXB541A



Tag No.: _____
Date: _____
PO No.: _____

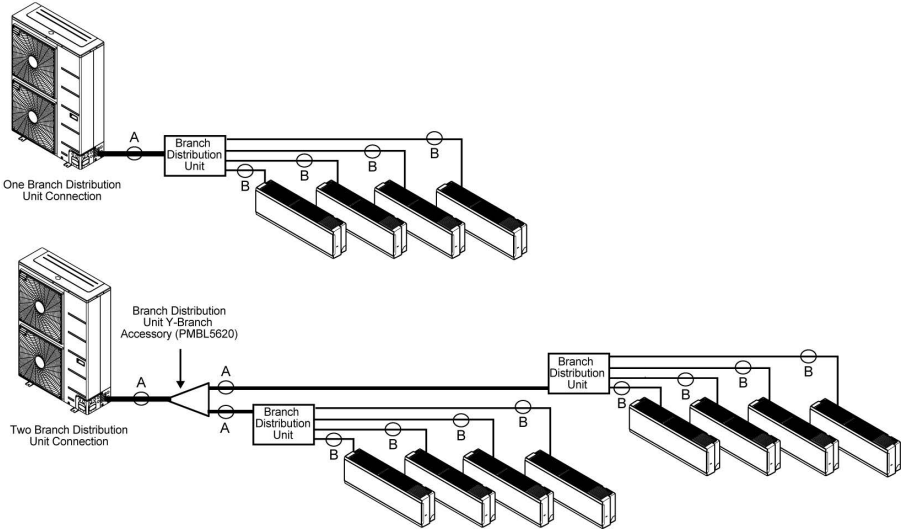
Example: Outdoor unit with seven (7) indoor units, and two (2) branch distribution units connected. ODU:
Outdoor Unit.
IDU: Indoor Unit.
BD: Branch Distribution Unit(s).
A: Main Pipe.
B: Branch Pipe (Branch Distribution Unit[s] to Indoor Unit[s]).



Multi F MAX Outdoor Unit Refrigerant Piping System Limitations.

| | | | |
|---|---|-------------------------------------|-------------|
| Pipe Length (ELF = Equivalent Length of pipe in Feet) | Total piping length ($\Sigma A + \Sigma B$) | | ≤475.7 feet |
| | Main pipe (Outdoor Unit to Branch Distribution Units: A) | Minimum for Each (A) Piping Segment | 16.4 feet |
| | | Maximum (ΣA) | ≤180.4 feet |
| | Total branch piping length (ΣB) | | ≤295.3 feet |
| | Branch pipe (Branch Distribution Units to Indoor Units: B) | Minimum | 16.4 feet |
| | | Maximum | ≤49.2 feet |
| Elevation Differential (All Elevation Limitations are Measured in Actual Feet) | If outdoor unit is above or below indoor unit (h1) | | ≤98.4 feet |
| | Between the farthest two indoor units (h2) | | ≤49.2 feet |
| | Between branch distribution unit and farthest connected indoor unit(s) (h3) | | ≤32.8 feet |
| | Between branch distribution units (h4) | | ≤49.2 feet |

Installing the Unit



Multi F MAX Piping Sizes.

| Piping | Main Pipe A (inch) | Branch Pipe B |
|--------|--------------------|--|
| Liquid | Ø3/8 | Depends on the size of the indoor unit piping. |
| Vapor | Ø3/4 | |

Job Name/Location:

Tag No.:

Date:

For: File Resubmit
Approval Other

PO No.:

Architect: GC:

Engr: Mech:

Rep:
(Company) (Project Manager)



KNUAK121A

R32 Multi F Art Cool™ Mirror Wall Mounted Indoor Unit

12,000 Btu/h



Performance:

| | |
|----------------------------------|--------|
| Nominal Cooling Capacity (Btu/h) | 12,000 |
| Nominal Heating Capacity (Btu/h) | 13,600 |

Cooling Nominal Test Conditions:
Indoor: 80°F DB / 67°F WB
Outdoor: 95°F DB / 75°F WB

Heating Nominal Test Conditions:
Indoor: 70°F DB / 60°F WB
Outdoor: 47°F DB / 43°F WB

Electrical:

| | |
|--------------------------------------|--------------|
| Power Supply (V/Hz/Ø) ^{1,2} | 208-230/60/1 |
| Rated Current (A) | 0.4 |

Piping:

| | |
|-----------------------------------|------------|
| Installed Liquid Pipe (in., O.D.) | Ø1/4 |
| Installed Vapor Pipe (in., O.D.) | Ø3/8 |
| Liquid Connection (in., O.D.) | Ø1/4 |
| Vapor Connection (in., O.D.) | Ø3/8 |
| Drain (in., O.D. / I.D.) | 27/32, 5/8 |
| Temperature Sensor | Thermistor |

Controls Features:

- Left / right and up / down auto swing
- 24-Hour on/off timer
- Auto operation
- Auto restart
- Group control
- Inverter (variable speed fan)
- Jet cool / Jet heat
- 3M Micro Dust Filter
- Self-cleaning indoor coil
- Sleep mode
- R32 leak detection sensor
- Built-in Wi-Fi via Smart ThinQ app
- Compatible with applicable Single Zone Outdoor Units (see single zone literature for matching system details)

Included Accessories:

- Wireless Remote Controller — AKB76044208

Optional Accessories:

- ☐ Auxiliary Heater Kit - PRARS1
- ☐ Single-Port Shutoff Valve - PRHPZ010A

Controller Options:

- ☐ MultiSITE™ CRC* Controllers
- ☐ Simple Remote Controllers
- ☐ Standard III Remote Controllers
- ☐ Deluxe Remote Controller
- ☐ Remote Temperature Button Sensor
- ☐ Dry Contacts

Entering Mixed Air:

| | |
|-----------------|---------|
| Cooling (°F WB) | 57 ~ 77 |
| Heating (°F DB) | 59 ~ 81 |

Unit Data:

| | |
|--|---------------------|
| Refrigerant Type | R32 |
| Refrigerant Control | EEV |
| Sound Pressure (H/M/L) (±3 dB[A]) ³ | 38 / 34 / 29 |
| Primary Filter | Washable Pre-filter |
| Secondary Filter | 3M Micro Dust |
| Net Weight (lbs.) | 22.7 |
| Shipping Weight (lbs.) | 24.5 |

Fan:

| | |
|-----------------------------|---------------------------------------|
| Type | Cross Flow |
| Quantity | 1 |
| Motor/Drive | Brushless Digitally Controlled/Direct |
| Air Flow H/M/L (CFM) | 282 / 233 / 177 |
| Dehumidification (pts./hr.) | 2.75 |

Notes:

1. Acceptable operating voltage: 187V-253V.
2. The power wiring and the communication wiring from the outdoor unit to the indoor unit, or from the branch distribution unit to the indoor unit is field supplied and must be stranded, shielded or unshielded (if shielded, it must be grounded to the chassis of the outdoor unit only). All wiring must comply with applicable local and national codes.
 - a. Power Wiring and Communication Wiring from Outdoor Unit to Indoor Unit (No. x AWG) 3 x 14 / 2 x 18.
 - b. Power Wiring and Communication Wiring from Branch Distribution Unit to Indoor Unit (No. x AWG) 3 x 14 / 2 x 18.
3. Sound Pressure levels are tested in an anechoic chamber under ISO Standard 3745.
4. See Engineering Manual for sensible and latent capacities.
5. The indoor unit comes with a dry helium charge.
6. Corresponding refrigerant piping length is in accordance with standard length of each outdoor unit and the level difference is 0 ft. All capacities are net with a combination ratio between 95 - 105%.
7. Must follow installation instructions in the applicable LG installation manual.



KNUAK121A
R32 Multi F Art Cool™ Mirror Wall Mounted Indoor Unit
12,000 Btu/h



PO No.: _____

Unit : inch (mm)

Front View Dimensions:

- Top: [30-3/16 (767)] Air Intake Hole, [5-29/32 (150)] Air Intake Hole
- Right: [32-15/16 (837)]
- Bottom: [12-1/8 (308)]
- Left: [28-5/32 (715)] Air Outlet Hole
- Internal: Display & Remote Controller Signal Receiver Signal

Side View Dimensions:

- Top: [7-9/16 (192)] Air Intake
- Right: [10-11/32 (263)] Refrigerant, Drain Pipe and Cable Knock Out Hole
- Bottom: [2-7/32 (56)]
- Left: [5/16 (8)]

Top View Dimensions:

- Left: [32-15/16 (837)]
- Right: [3-11/16 (94)]
- Bottom: [2-15/32 (63)]
- Internal: Installation Plate, Fitting the Installation Plate, Drilling Hole

Bottom View Dimensions:

- Left: [32-15/16 (837)]
- Right: [32-15/16 (837)]
- Bottom: [12-1/8 (308)]
- Internal: Terminal Block for Power Supply and Communication, Refrigerant, Drain Pipe and Cable Knock Out Hole

Other Dimensions:

- Decorative Cover: [2-9/8 (60)]
- Drain Hose Connection: [1-27/32 (47)]
- Unit Outline: [1-1/2 (38)]
- Connecting Gas/Liquid Pipe: [5-3/16 (132)]
- In Case of Left Side Piping: [5-3/16 (132)]

Notes:

- * If airflow direction control is available.
- Up & Down: Cooling (15°), Heating (15°)
- Left & Right: 55°

Job Name/Location:

Tag No.:

Date:

For: File Resubmit
Approval Other

PO No.:

Architect: GC:

Engr: Mech:

Rep:
(Company) (Project Manager)



KNUAK181A

R32 Multi F Art Cool™ Mirror Wall Mounted Indoor Unit

18,000 Btu/h



Performance:

| | |
|----------------------------------|--------|
| Nominal Cooling Capacity (Btu/h) | 18,000 |
| Nominal Heating Capacity (Btu/h) | 21,600 |

Cooling Nominal Test Conditions:
Indoor: 80°F DB / 67°F WB
Outdoor: 95°F DB / 75°F WB

Heating Nominal Test Conditions:
Indoor: 70°F DB / 60°F WB
Outdoor: 47°F DB / 43°F WB

Electrical:

| | |
|--------------------------------------|--------------|
| Power Supply (V/Hz/Ø) ^{1,2} | 208-230/60/1 |
| Rated Current (A) | 0.4 |

Piping:

| | |
|-----------------------------------|------------|
| Installed Liquid Pipe (in., O.D.) | Ø1/4 |
| Installed Vapor Pipe (in., O.D.) | Ø1/2 |
| Liquid Connection (in., O.D.) | Ø3/8 |
| Vapor Connection (in., O.D.) | Ø5/8 |
| Drain (in., O.D. / I.D.) | 27/32, 5/8 |
| Temperature Sensor | Thermistor |

Controls Features:

- Left / right and up / down auto swing
- 24-Hour on/off timer
- Auto operation
- Auto restart
- Group control
- Inverter (variable speed fan)
- Jet cool / Jet heat
- 3M Micro Dust Filter
- Self-cleaning indoor coil
- Sleep mode
- R32 leak detection sensor
- Built-in Wi-Fi via Smart ThinQ app
- Compatible with applicable Single Zone Outdoor Units (see single zone literature for matching system details)

Included Accessories:

- Wireless Remote Controller — AKB76044208

Optional Accessories:

- ☐ Auxiliary Heater Kit - PRARS1
- ☐ Single-Port Shutoff Valve - PRHPZ010A

Controller Options:

- ☐ MultiSITE™ CRC* Controllers
- ☐ Simple Remote Controllers
- ☐ Standard III Remote Controllers
- ☐ Deluxe Remote Controller
- ☐ Remote Temperature Button Sensor
- ☐ Dry Contacts

Entering Mixed Air:

| | |
|-----------------|---------|
| Cooling (°F WB) | 57 ~ 77 |
| Heating (°F DB) | 59 ~ 81 |

Unit Data:

| | |
|--|---------------------|
| Refrigerant Type | R32 |
| Refrigerant Control | EEV |
| Sound Pressure (H/M/L) (±3 dB[A]) ³ | 44 / 38 / 34 |
| Primary Filter | Washable Pre-filter |
| Secondary Filter | 3M Micro Dust |
| Net Weight (lbs.) | 27.8 |
| Shipping Weight (lbs.) | 33.5 |

Fan:

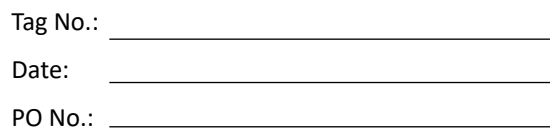
| | |
|-----------------------------|---------------------------------------|
| Type | Cross Flow |
| Quantity | 1 |
| Motor/Drive | Brushless Digitally Controlled/Direct |
| Air Flow H/M/L (CFM) | 558 / 438 / 353 |
| Dehumidification (pts./hr.) | 5.50 |

Notes:

1. Acceptable operating voltage: 187V-253V.
2. The power wiring and the communication wiring from the outdoor unit to the indoor unit, or from the branch distribution unit to the indoor unit is field supplied and must be stranded, shielded or unshielded (if shielded, it must be grounded to the chassis of the outdoor unit only). All wiring must comply with applicable local and national codes.
 - a. Power Wiring and Communication Wiring from Outdoor Unit to Indoor Unit (No. x AWG) 3 x 14 / 2 x 18.
 - b. Power Wiring and Communication Wiring from Branch Distribution Unit to Indoor Unit (No. x AWG) 3 x 14 / 2 x 18.
3. Sound Pressure levels are tested in an anechoic chamber under ISO Standard 3745.
4. See Engineering Manual for sensible and latent capacities.
5. The indoor unit comes with a dry helium charge.
6. Corresponding refrigerant piping length is in accordance with standard length of each outdoor unit and the level difference is 0 ft. All capacities are net with a combination ratio between 95 - 105%.
7. Must follow installation instructions in the applicable LG installation manual.
8. Multi compatible 18k IDUs include socket adapters for refrigerant pipe connections with Multi F systems.



KNUAK181A
R32 Multi F Art Cool™ Mirror Wall Mounted Indoor Unit
18,000 Btu/h



Front View: The front view shows the unit's width as 39-9/32 (998) and height as 13-19/32 (345). The display and remote control signal receiver are located 34-11/32 (872) from the bottom. The air intake hole is 6-11/16 (170) from the top. The air outlet hole is 2-28/32 (74) from the top. The refrigerant, drain pipe, and cable knock out hole is 2-3/8 (60) from the top. The air outlet hole is 2-3/8 (60) from the top. The air intake hole is 6-11/16 (170) from the top. The air outlet hole is 2-28/32 (74) from the top. The refrigerant, drain pipe, and cable knock out hole is 2-3/8 (60) from the top.

Side View: The side view shows the unit's depth as 11-13/16 (300). The air intake is 6-11/32 (212) from the top. The air outlet is 7/16 (11) from the top. The refrigerant, drain pipe, and cable knock out hole is 2-3/8 (60) from the top. The air intake is 6-11/32 (212) from the top. The air outlet is 7/16 (11) from the top. The refrigerant, drain pipe, and cable knock out hole is 2-3/8 (60) from the top.

Top View: The top view shows the unit's width as 39-9/32 (998) and depth as 13-19/32 (345). The air intake is 4-7/32 (115) from the top. The air outlet is 2-3/32 (53) from the top. The refrigerant, drain pipe, and cable knock out hole is 5-29/32 (150) from the top. The air intake is 4-7/32 (115) from the top. The air outlet is 2-3/32 (53) from the top. The refrigerant, drain pipe, and cable knock out hole is 5-29/32 (150) from the top.

Rear View: The rear view shows the unit's width as 39-9/32 (998) and depth as 13-19/32 (345). The air intake is 4-7/32 (115) from the top. The air outlet is 2-3/32 (53) from the top. The refrigerant, drain pipe, and cable knock out hole is 5-29/32 (150) from the top. The air intake is 4-7/32 (115) from the top. The air outlet is 2-3/32 (53) from the top. The refrigerant, drain pipe, and cable knock out hole is 5-29/32 (150) from the top.

Installation Details: The installation plate is shown with dimensions for the unit outline and the fixing the installation plate drilling hole. The unit outline is 1-1/16 (27) from the top. The fixing the installation plate drilling hole is 1-1/16 (27) from the top. The unit outline is 1-1/16 (27) from the top. The fixing the installation plate drilling hole is 1-1/16 (27) from the top.

Decorative Cover: The decorative cover is shown with dimensions for the terminal block for power supply and communication, and the refrigerant, drain pipe, and cable knock out hole. The terminal block for power supply and communication is 2-7/32 (56) from the top. The refrigerant, drain pipe, and cable knock out hole is 2-1/4 (57) from the top. The decorative cover is 3-17/32 (90) from the top.

Airflow Direction: The airflow direction is shown with a diagram indicating the unit can be set to Cool, Heat, or Auto. The unit can be set to Cool, Heat, or Auto. The unit can be set to Cool, Heat, or Auto.

Job Name/Location:

Tag No:

Date:

| | | |
|------|----------|----------|
| For: | File | Resubmit |
| | Approval | Other |

PO No.:

Architect:

GC:

Engr:

Mech:

Rep:

(Company)

(Project Manager)

PMBD3630ZR

Three-Port Branch Distribution Unit

For Multi F MAX and Multi F MAX with LGRED° Outdoor Units



Performance:

| | |
|---|----------------|
| Max. Nominal Port Capacity (Btu/h) (each port) | 24,000 |
| Max. Nominal Unit Capacity (Btu/h) (sum of ports) | 72,000 |
| Connected Indoor Unit Capacity (Btu/h) | 7,000 ~ 24,000 |
| Power Input (W) | 87 |

Electrical:

| | |
|------------------------------------|--------------|
| Power Supply (V/Hz/Ø) ¹ | 208-230/60/1 |
| Rated Amps (A) | 0.36 |

Piping:

Piping Connections to Outdoor Unit:

| | |
|-------------------------|------------|
| Liquid Line (in., O.D.) | ø3/8 Braze |
| Vapor Line (in., O.D.) | ø3/4 Braze |

Piping Connections to Indoor Unit:

| | |
|-------------------------|----------------|
| Liquid Line (in., O.D.) | Ø1/4 Flare x 3 |
| Vapor Line (in., O.D.) | Ø3/8 Flare x 3 |

Features:

- Distributes refrigerant to indoor units
- Internal components are insulated
- Compact design

Operating Range:

| | |
|-----------------------------|---------|
| Temperature Range (°F D.B.) | 0 ~ 150 |
| Maximum Humidity | 80% |

Unit Data:

| | |
|--|----------------|
| Net Weight (lbs.) | 18.3 |
| Shipping Weight (lbs.) | 21.8 |
| Power Wiring: ODU→BDU, BDU→IDU (No x AWG) ² | 3 x 14, 3 x 14 |
| Comm. Wiring: ODU→BDU, BDU→IDU (No x AWG) ² | 2 x 18, 2 x 18 |

Notes:

1. Acceptable operating voltage: 187V-253V.
2. The power wiring and the communication wiring from the outdoor unit to the branch distribution unit, and from the branch distribution unit to the indoor unit is field supplied and must be stranded, shielded or unshielded (if shielded, it must be grounded to the chassis of the outdoor unit only). All wiring must comply with applicable local and national codes.
 - a. Power Wiring and Communication Wiring from ODU to BDU (No. x AWG) 3 x 14 / 2 x 18.
 - b. Power Wiring and Communication Wiring from BDU to IDU (No. x AWG) 3 x 14 / 2 x 18.
3. Piping lengths:
 - Maximum height difference between branch distribution unit and indoor units - 32.8 feet.
 - Maximum height difference between branch distribution unit and branch distribution unit - 49.2 feet.
 - Maximum piping length between branch distribution unit and indoor units - 49.2 feet.
4. The branch distribution unit should be installed inside of a building.
5. Must follow installation instructions in the applicable LG installation manual.



PMBD3630ZR
Three-Port Branch Distribution Unit
For Multi F MAX and Multi F MAX with LGRED® Outdoor Units



Tag No.: _____
Date: _____
PO No.: _____

Unit: Inch

