

Job Name/Location:

Tag No.:

Date:

For:	File	Resubmit
	Approval	Other_____

PO No.:

Architect: _____ GC: _____

Engr: _____ Mech: _____

Rep: _____
(Company) (Project Manager)

KSSAP241A
R32 Single-Zone Extended Piping Wall Mount
Outdoor Unit (ODU) - KUSAP241A, Indoor Unit (IDU) - KNSAP241A



Performance:

Cooling:

Cooling Capacity (Min~Rated~Max) (Btu/h)	3,070-22,000-30,000
SEER2	22.0
EER2	13

SEER - Seasonal Energy Efficiency Ratio EER - Energy Efficiency Ratio

Heating:

Heating Capacity (Min~Rated~Max) (Btu/h)	3,070-24,000-30,800
HSPF2	9.7
Max. Heating @ Indoor 70°F DB	
Outdoor 19°F DB / 17°F WB	23,210 (97%)
Outdoor 6°F DB / 5°F WB	20,000 (83%)
Outdoor 1°F DB / 0°F WB	17,800 (74%)
Outdoor -3°F DB / -4°F WB	16,580 (69%)

HSPF - Heating Seasonal Performance Factor
Cooling Nominal Test Conditions: Indoor: 80°F DB / 67°F WB Heating Nominal Test Conditions: Indoor: 70°F DB / 60°F WB
Outdoor: 95°F DB / 75°F WB Outdoor: 47°F DB / 43°F WB

Electrical:

Power Supply (V/Hz/Ø)	208-230/60/1
MOP (A)	30.0
MCA (A)	19.0
Cooling Rated Amps (A)	8.00
Heating Rated Amps (A)	9.30
Compressor (A)	14.4
Fan Motor (IDU + ODU) (A)	0.5 + 0.4
Cooling Power Input (kW) (Min~Rated~Max @95°F) (kW)	0.400-1.692-3.170
Heating Power Input (kW) (Min~Rated~Max @47°F) (kW)	0.660-1.920-3.240

MOP - Maximum Overcurrent Protection MCA - Minimum Circuit Ampacity

Piping:

Liquid Line (in., O.D.)	3/8 Flare
Vapor Line (in., O.D.)	5/8 Flare
Additional Refrigerant (oz./ft.)	0.32
Min. / Max. Pipe Length (ft.) ²	9.8 / 164.0
Piping Length (no add'l refig., ft.)	24.6
Max. Elevation (ft.)	98.4

Features:

- 24-Hour On / Off Timer
- 4-Way Auto Swing
- Auto Restart / Auto Changeover
- Jet Cool / Jet Heat
- Inverter (Variable Speed Compressor)
- Smart Diagnosis
- Washable Filter
- Self-Cleaning Indoor Coil
- Built-in Base Pan Heater
- Built-in Wi-Fi via Smart ThinQ app
- Low ambient cooling down to 14°F (0°F with Wind Baffle Kit)

Included Accessories:

- Wireless Remote Controller — AKB76044208

Optional Accessories:

- Low Ambient Wind Baffle (Cooling operation to 0°F) - ZLABGP04B

Controller Options:

- MultiSITE™ CRC* Controllers
 - Standard III Remote Controllers
 - Dry Contacts
 - PI-485
 - AC Smart 5 Central Controller
 - MultiSITE Communication Mgr.
 - LonWorks® Gateway
 - ACP 5 BACnet® Gateway
- BACnet® is a registered trademark of ASHRAE. LonWorks is a registered trademark of Echelon Corp.

Operating Range:

Outdoor Unit:

Cooling (°F DB)	14 ~ 118
Heating (°F WB)	-4 ~ +65

Indoor Unit:

Cooling (°F WB)	53 ~ 75
Heating (°F DB)	60 ~ 86

System Data:

Refrigerant Type	R32
Refrigerant Control	EEV
Refrigerant Charge (lbs.)	4.081
ODU Sound Pressure (Cooling / Heating) (±1 dB[A]) ³	55 / 56
IDU Sound Pressure	
Cooling (H/M/L/Sleep) (±1 dB[A]) ³	49 / 44 / 40 / 30
Heating (H/M/L) (±1 dB[A]) ³	49 / 44 / 40
ODU Net / Shipping Weight (lbs.)	135.4 / 147.7
IDU Net / Shipping Weight (lbs.)	36.6 / 44.5
Heat Exchanger Coating	GoldFin™

Fan:

ODU Type	Propeller
IDU Type	Cross Flow
Fan Speeds (Fan/Cool/Heat)	6 / 6 / 6
Quantity (ODU + IDU)	1 + 1
Motor/Drive	Brushless Digitally Controlled/Direct
ODU Max. Air Flow Rate (CFM)	2119
IDU Air Flow	
Cooling, Max/H/M/L (CFM)	813 / 601 / 495 / 389
Heating, Max/H/M/L (CFM)	919 / 707 / 601 / 495
Dehumidification (pts./hr.)	4.65

Notes:

1. Acceptable operating voltage: 187V-253V.
2. Piping lengths are equivalent.
3. Sound Pressure levels are tested in an anechoic chamber under ISO Standard 3745.
4. All communication / connection (power) cable from the outdoor unit to the indoor unit is field supplied and must be a minimum of four-conductor, 14 AWG, stranded, shielded or unshielded (if shielded, it must be grounded to the chassis of the outdoor unit only), and must comply with applicable local and national codes.
5. See Engineering Manual for sensible and latent capacities.
6. Power wiring cable size must comply with the applicable local and national code.
7. The indoor unit comes with a dry helium charge.
8. This data is rated 0 ft. above sea level, with 24.6 ft. of refrigerant line and a 0 ft. level difference between outdoor and indoor units.
9. Must follow installation instructions in the applicable LG installation manual.



Proper sizing and installation of equipment is critical to achieve optimal performance. Split system air conditioners and heat pumps (excluding ductless systems) must be matched with appropriate coil components to meet ENERGY STAR® criteria. Ask your contractor for details or visit www.energystar.gov. (ENERGY STAR and the ENERGY STAR mark are registered trademarks owned by the U.S. Environmental Protection Agency.)

For a complete list of available accessories, contact your LG representative.
For continual product development, LG reserves the right to change specifications without notice.
© LG Electronics U.S.A., Inc., Englewood Cliffs, NJ. All rights reserved. "LG Life's Good" is a registered trademark of LG Corp. /www.lghvac.com

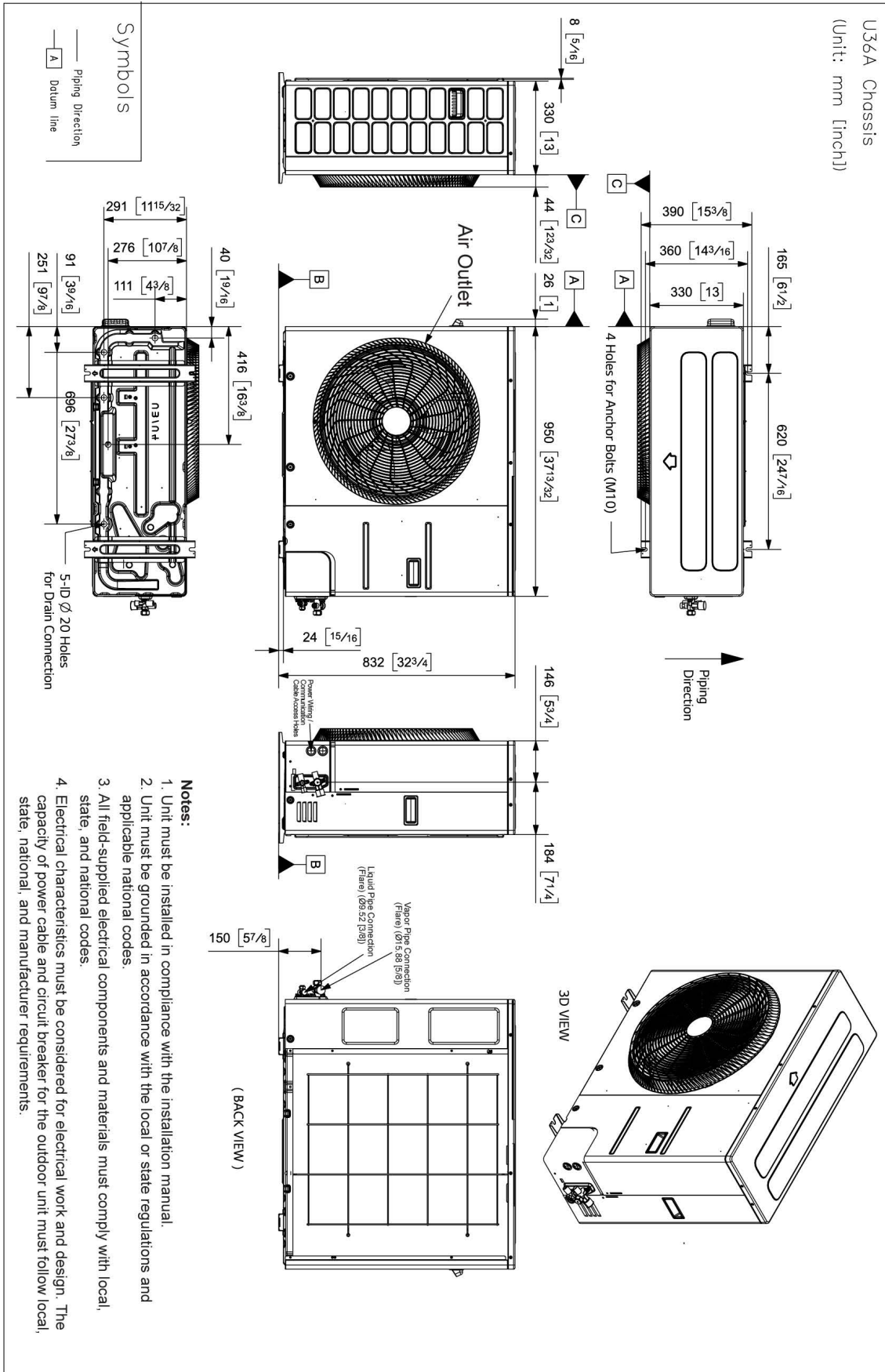
KSSAP241A
R32 Single-Zone Extended Piping Wall Mount
 Outdoor Unit (ODU) - KUSAP241A, Indoor Unit (IDU) - KNSAP241A



Tag No.: _____

Date: _____

PO No.: _____



KSSAP241A

R32 Single-Zone Extended Piping Wall Mount

Outdoor Unit (ODU) - KUSAP241A, Indoor Unit (IDU) - KNSAP241A



Tag No.: _____

Date: _____

PO No.: _____

