

Job Name/Location:

Tag #:

Date:

For: File Resubmit
Approval Other

PO No.:

Architect: GC:

Engr: Mech:

Rep: (Company) (Project Manager)



LH488HHV

Single Zone High Static Ducted with LGRED°

Outdoor Unit (ODU) - LUU480HHV, Indoor Unit (IDU) - LHN488HV

Performance:

Cooling:

Cooling Capacity (Min~Rated~Max, Btu/h)	18,400 ~ 46,000 ~ 55,000
SEER	18.7
EER	12.5

SEER - Seasonal Energy Efficiency Ratio

EER - Energy Efficiency Ratio

Heating:

Heating Capacity (Min~Rated~Max, Btu/h)	19,000 ~ 50,000 ~ 60,000
HSPF	11.2
Max Heating @ Indoor 70° DB (Btu/h)	
Outdoor 17°F WB	53,500
Outdoor 5°F WB	50,000
Outdoor -4°F WB	43,590
Outdoor -13°F WB	36,010

HSPF - Heating Seasonal Performance Factor

Cooling Nominal Test Conditions:

Indoor: 80°F DB / 67°F WB

Outdoor: 95°F DB / 75°F WB

Heating Nominal Test Conditions:

Indoor: 70°F DB / 60°F WB

Outdoor: 47°F DB / 43°F WB

Electrical:

Power Supply ² (V/Hz/Ø)	208-230/60/1
MOP (A)	40
MCA (A)	32
Cooling / Heating Rated Amps (A)	16.3 / 20.2
Compressor(A)	22.0
Fan Motor (IDU + ODU) (A)	1.3 + (2x1.6)
Cooling Power Input (min~rated~max,kW)	1.40 ~ 3.68 ~ 5.75
Heating Power Input (min~rated~max,kW)	1.40 ~ 4.55 ~ 6.20
Locked Rotor Amps (A)	33

MOP - Maximum Overcurrent Protection

MCA - Minimum Circuit Ampacity

Piping:

Installed Liquid Pipe (in., O.D.)	3/8 Flare
Installed Vapor Pipe (in., O.D.)	5/8 Flare
IDU Liquid Connection (in., O.D.)	3/8 Flare
IDU Vapor Connection (in., O.D.)	5/8 Flare
Additional Refrigerant (oz./ft.)	0.43
Min./Max. Pipe Length ² (ft.)	16.4 / 246
Piping Length (no add'l refriger., ft.)	24.9
Max. Elevation (ft.)	98.4

Features:

- Auto ESP function
- Hot start
- Internal condensate pump
- ODU drain pan heater
- Inverter (variable speed fan)
- Auto restart
- Control lock
- Group control
- Timer (on/off)
- Sleep mode
- Optional Wi-Fi Control
- Night quiet function
- IDU compatible with Multi F ODU's (24k, 36k models)

Required Accessories:

- Controller (any LG wired remote controller)

Optional Accessories:

- MultiSITE™ CRC1 - PREMTBVC0
 MultiSITE CRC1+ - PREMTBVC1
 MultiSITE Comm. Mgr. - PBACNBTR0A
 AC Smart 5 - PACS5A000
 Simple Controller - PREMTCC00
 Wi-Fi module - PWFMD200
 ACP 5 - PACP5A000
 Low Ambient Wind Baffle¹¹
 (Cooling operation to -4°F) - ZLABGP04A x 2
- Dynamic V8 2VL Low Profile Air Cleaner - ZPLMV201A
 Dry Contact (Simple) - PDRYCB100
 Dry Contact (3rd Party) - PDRYCB320
 Dry Contact (Setback) - PDRYCB400
 PI-485 - PMNFP14A1
 Aux Heater Relay Kit - PRARH1
 High Efficiency Filter Box - ZFBXM301A

Operating Range:

Outdoor Unit:

Cooling (°F DB)	5 to 118
Heating (°F WB)	-13 to 64

Indoor Unit:

Cooling (°F WB)	57 to 77
Heating (°F DB)	59 to 81

System Data:

Refrigerant Type	R410A
Refrigerant Control	EEV
Refrigerant Charge (lbs.)	9.3
ODU Sound Pressure Max (Cool / Heat) ±1 dB(A) ³	54 / 56
IDU Sound Pressure (H/M/L) ±1 dB(A) ³	42 / 40 / 39
ODU Net / Shipping Weight (lbs.)	210.9 / 234.1
IDU Net / Shipping Weight (lbs.)	95.9 / 112.9
Heat Exchanger Coating	GoldFin™

Fan:

ODU / IDU Fan Type	Propeller/ Sirocco
Fan Speeds (Fan/Cool/Heat)	3 / 3 / 3
Fan Quantity (ODU + IDU)	2 + 2
Motor/Drive	Brushless Digitally Controlled/Direct
Maximum ODU Air Volume (CFM)	4,238
IDU Air Volume (H/M/L) (CFM)	1765 / 1589 / 1412
Dehumidification Rate (pts/hr)	7.61
IDU External Static Pressure (ESP)	
Operating Range (min ~ default ~ max) (in-wg)	0.16 ~ 0.24 ~ 0.59

Notes:

1. Acceptable operating voltage: 187V-253V.
2. Piping lengths are equivalent.
3. Sound Pressure levels are tested in an anechoic chamber under ISO Standard 3745.
4. Maximum static pressure may result in reduced airflow (CFM).
5. All communication / connection (power) cable from the outdoor unit to the indoor unit is field supplied and is to be minimum four-conductor, 14 AWG, stranded, shielded or unshielded (if shielded, it must be grounded to the chassis of the outdoor unit only), and must comply with applicable local and national codes.
6. See Engineering Manual for sensible and latent capacities.
7. Power wiring cable size must comply with the applicable local and national code.
8. The indoor unit comes with a dry helium charge.
9. This data is rated 0 ft. above sea level, with 24.6 ft. of refrigerant line and a 0 ft. level difference between outdoor and indoor units.
10. Must follow installation instructions in the applicable LG installation manual.
11. If the optional low ambient wind baffle (ZLABGP04A) is used, one wind baffle is required for each ODU fan.

LGRED°
Powerful Heat Technology



For a complete list of available accessories, contact your LG representative.

For continual product development, LG reserves the right to change specifications without notice.

© LG Electronics U.S.A., Inc., Englewood Cliffs, NJ. All rights reserved. "LG Life's Good" is a registered trademark of LG Corp. /www.lghvac.com

SB_SZ_High_Static_Ducted_LH488HHV_2020_09_23_150516

Page 1 of 3

LH488HHV

Single Zone High Static Ducted with LGRED°

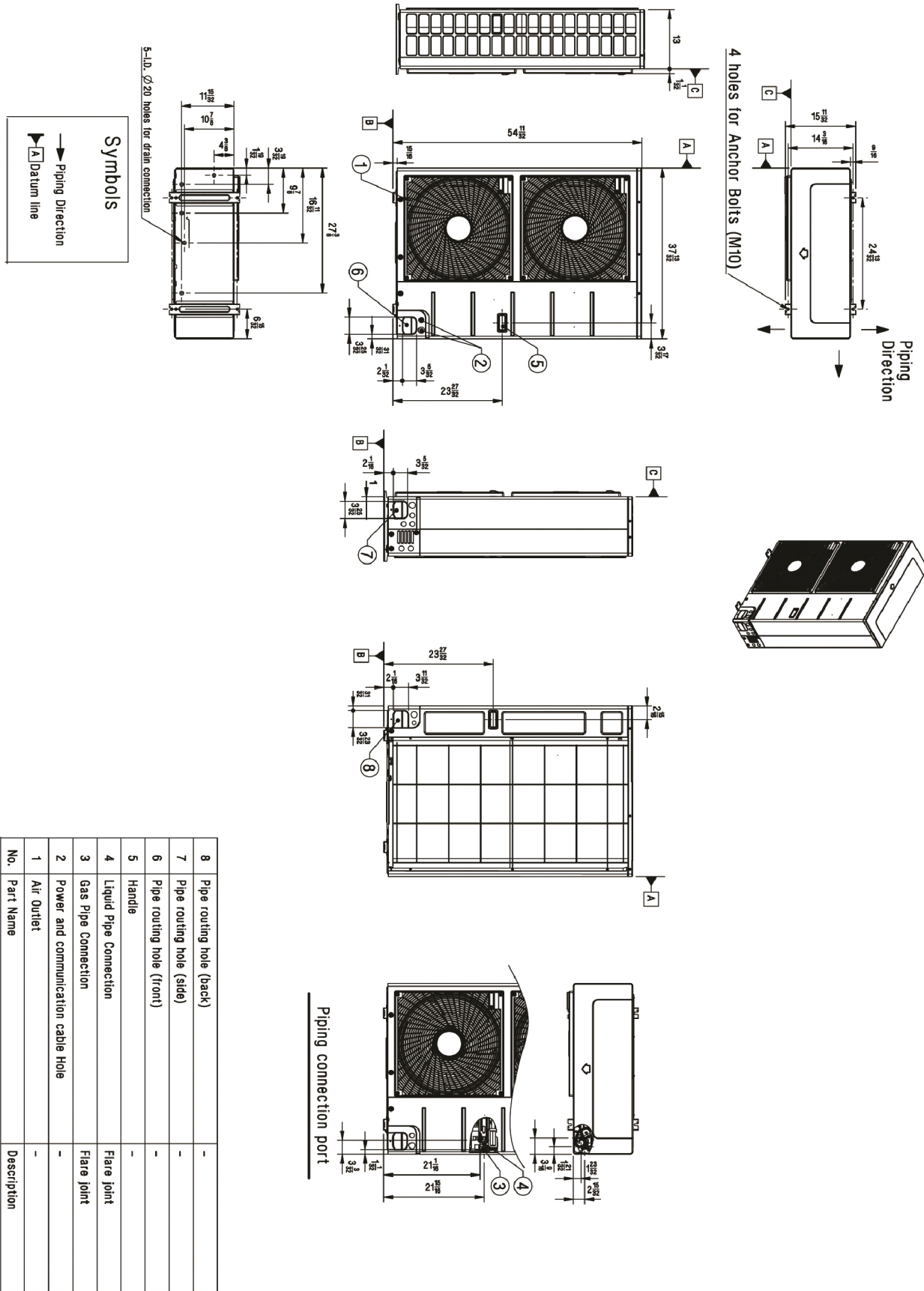
Outdoor Unit (ODU) - LUU480HHV, Indoor Unit (IDU) - LHN488HV



Tag No.: _____

Date: _____

PO No.: _____



Job Name/Location: _____

LH488HHV

Single Zone High Static Ducted with LGRED°

Outdoor Unit (ODU) - LUU480HHV, Indoor Unit (IDU) - LHN488HV

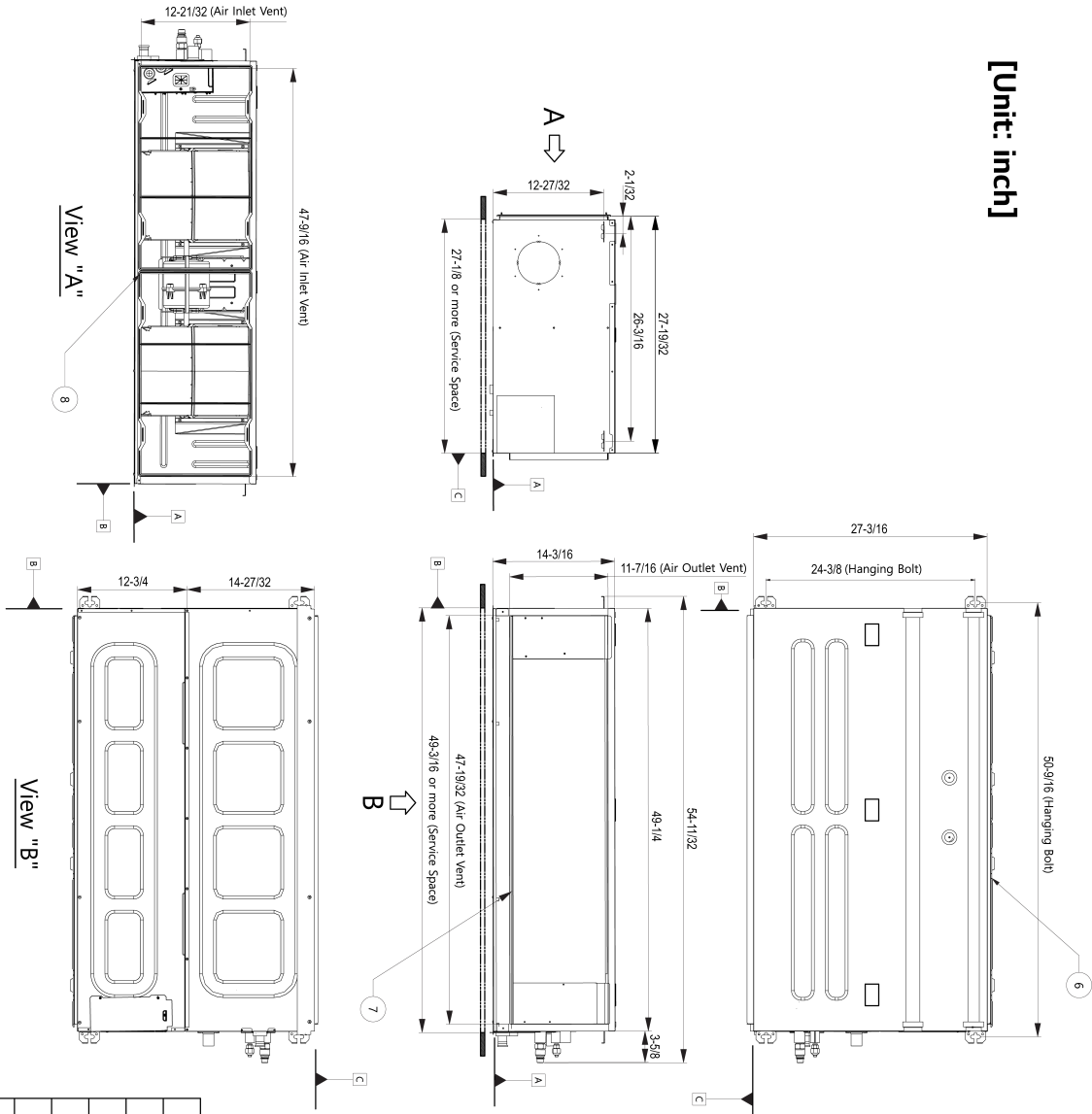


Tag No.: _____

Date: _____

PO No.: _____

[Unit: inch]



No.	Part Name	Description
9	Control Cover	-
8	Air Filters	Supplied with product
7	Air Outlet	-
6	Air Inlet	-
5	Power Cable Hole	-
4	Remote and Communication Cable Hole	-
3	Drain pipe connection	-
2	Liquid pipe connection	-
1	Gas pipe connection	-

