

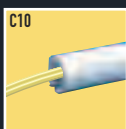
CORD ORGANIZING

CORDMATE®

Cord Channel

Quick, clean way to enclose a single cord or cable.

CordMate Cord Channel is streamlined to blend with any décor. Great for concealing phone wires, lamp, and extension cords. Perfect for family rooms or bedrooms. Self-adhesive backing makes it simple to install on a baseboard or wall. Paintable.



60" L x 3/8" W x 1/2" H

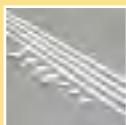
1524mm L x 8.9mm W x 12.7mm H



TOOLS YOU'LL NEED:

- Tape measure
- Fine tooth hacksaw

CORDMATE parts checklist:



CMK10 CordMate® Cord Cover Kit

4 pieces 30" channel - C10
3 couplings - C10
2 flat elbows - C16
1 inside elbow - C17
1 outside elbow - C18



C110 White & C100 Ivory CordMate® Kit

9' of wire channel (3 sections, 3' long)
2 couplings
1 inside elbow
1 outside elbow
2 flat elbows



C10 White & C1 Ivory Cord Channel

Covers small diameter cord.



C16 White & C6 Ivory Flat Elbows

For making a left or right 90° turn on a flat surface.



C17 White & C7 Ivory Inside Elbows

For making a 90° turn around an inside corner from wall-to-wall or wall-to-ceiling.



C18 White & C8 Ivory Outside Elbows

For making a 90° turn around an outside corner.



C19 White & C9 Ivory Coupling

For concealing seams where channel sections meet.

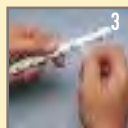
Easy to install:



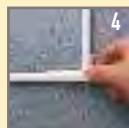
1 Cut CordMate to size.



2 Lay in wire. Snap closed.



3 Peel off tape backing and attach to wall.



4 Attach components as necessary.